

Shown: 2025 & 2030: Min/max of unconditional and conditional targets

Shown are averages for low and high or conditional and unconditional INDCs and their inter-extrapolations

Paris Agreement ratified on: 07/08/2017

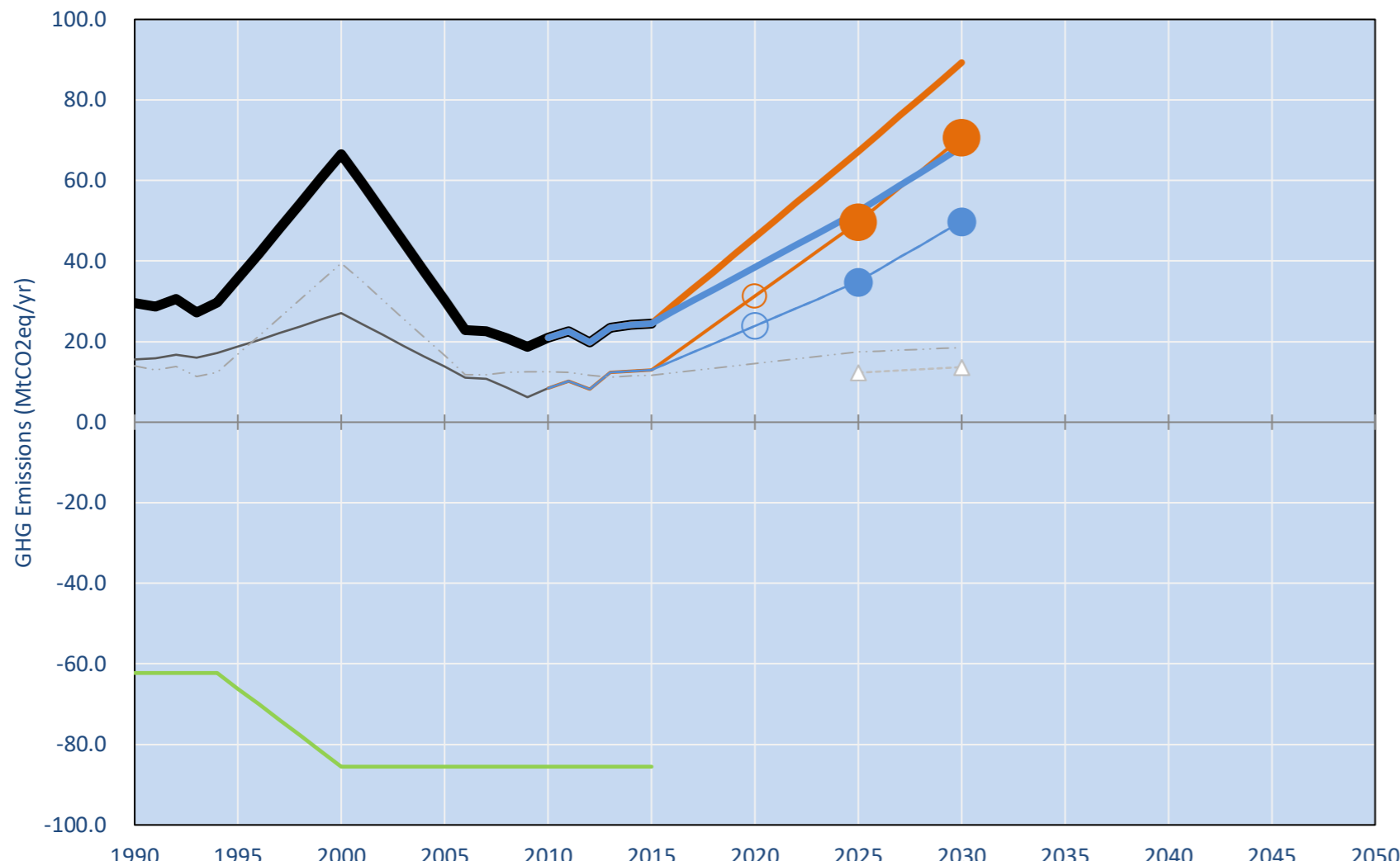
Per-Capita Emissions in 2030 rel. 2015 (excl. LULUCF): **+135%**

Zimbabwe

NDC 2025	NDC 2030	2015 World Rank	2025 World Rank	2030 World Rank
0% rel. BAU of 49.7 Mt	0% rel. BAU of 70.7 Mt	0.1% #115	0.1% #81	0.1% #72
-30% rel. BAU of 49.7 Mt	-30% rel. BAU of 70.7 Mt	1.6t #165	3.1t #124	3.7t #111

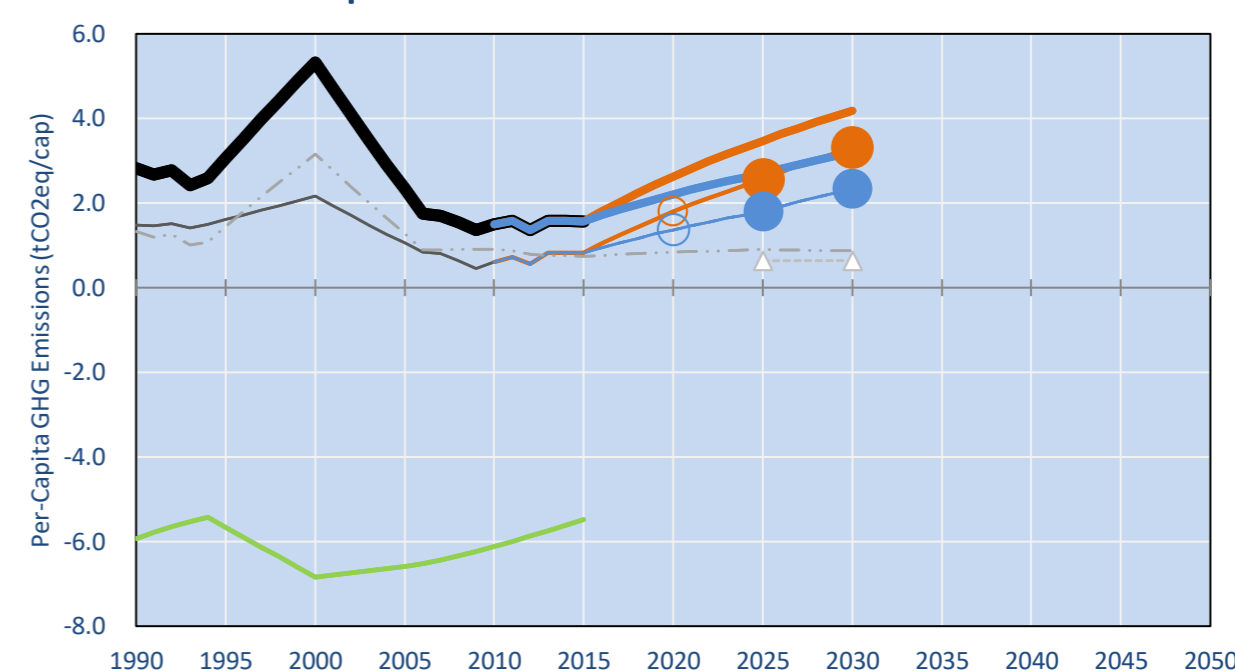
NDC: Reduction of emissions per capita by 33% compared to BAU conditional to full implementation by developed countries to their commitments relating to finance, technology and capacity pursuant to Article 4 of the Convention. (GWP unclear) INDC Submitted: 30/09/2015

GHG Emissions

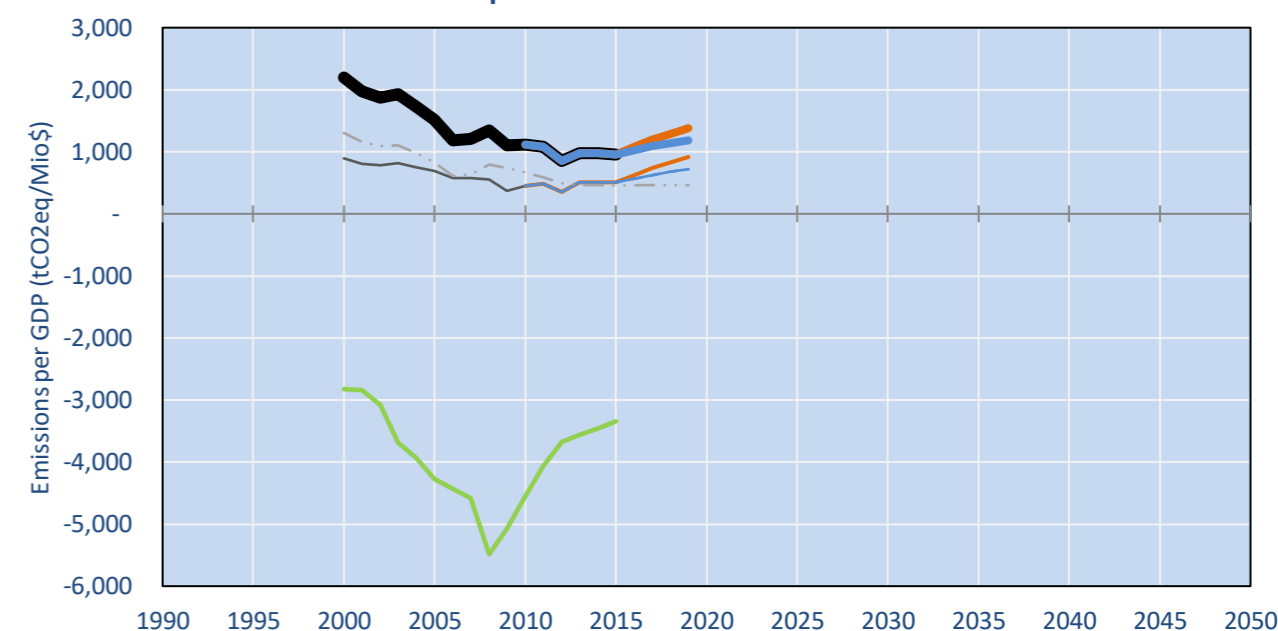


- Reference Total GHG excl. LULUCF
- Historical Covered Emissions, incl. LULUCF, if covered.
- LOW INDC Covered Emissions, incl. LULUCF if covered
- LOW INDC Covered + Non-Covered Emissions, excl. LULUCF
- HIGH INDC Covered Emissions, incl. LULUCF
- HIGH INDC Covered + Non-Covered Emissions, excl. LULUCF
- HIGH Cancun Pledges
- Reference LULUCF Emissions
- LOW INDC Levels
- LOW INDC Covered Emissions, excl. LULUCF
- HIGH INDC Levels
- HIGH INDC Covered Emissions, excl. LULUCF
- LOW Cancun Pledges
- Regional/Gas-specific BAU
- Not-covered GHG excl. LULUCF (Region Projection)

Per-Capita Emissions



GHG Emissions per GDP



2015 Total GHG Emissions excl. LULUCF

By Gas:	By Sector:
CO2: 52.7%	Cat. 1 Energy: 52.8%
CH4: 29.8%	Cat. 2, 3, 6 & 7: 5.0%
N2O: 17.6%	Cat. 4. Agriculture: 42.2%
F-gases: 0.0%	F-gases: 0.0%

GHG Emissions

	1990	2000	2005	2010	2015	2020		2025		2030	
(MtCO2eq/yr in GWP AR5)						low	high	low	high	low	high
Assumed LULUCF Accounting Credits (-)/Debits (+)											
NDC covered LULUCF Emissions											
NDC covered Emissions excl. LULUCF	16	27	14	8	13	31	24	50	35	71	50
Total GHG excl. LULUCF	30	67	30	21	25	46	39	67	52	89	68
Total GHG incl. LULUCF	33	19	55	65	61	40	47	18	33	4	17

Relative GHG Emissions

	1990	2000	2005	2010	2015	2020		2025		2030	
Total excl. LULUCF						low	high	low	high	low	high
Relative 1990	100%	225%	103%	71%	83%	155%	130%	227%	177%	302%	231%
Relative 2000	44%	100%	46%	32%	37%	69%	58%	101%	79%	134%	103%
Relative 2005	97%	219%	100%	69%	81%	151%	127%	221%	173%	294%	225%
Relative 2010	141%	317%	144%	100%	117%	219%	183%	320%	249%	425%	326%
Relative 2015	121%	271%	124%	86%	100%	187%	157%	274%	214%	364%	279%

Per-Capita Emissions

	1990	2000	2005	2010	2015	2020		2025		2030	
Total excl. LULUCF						low	high	low	high	low	high
Population (Mio)	10	12	13	14	16	17	17	19	19	21	21
Per-Capita Emissions (tCO2eq/cap)	2.8	5.3	2.3	1.5	1.6	2.6	2.2	3.5	2.7	4.2	3.2
Relative 1990	100%	189%	83%	53%	56%	93%	78%	123%	96%	148%	114%
Relative 2000	53%	100%	44%	28%	30%	49%	41%	65%	51%	79%	60%
Relative 2005	121%	228%	100%	64%	67%	113%	94%	148%	116%	179%	137%
Relative 2010	187%	354%	155%	100%	105%	175%	147%	231%	180%	278%	213%
Relative 2015	179%	339%	149%	96%	100%	167%	140%	221%	172%	266%	204%

Data Sources:

Cat1_CO2	PRIMAPHIST17	Cat5A1_CO2	UNFCCC CRF + Nat. Comms.
Cat2367_CO2	PRIMAPHIST17	Cat5A2_CO2	UNFCCC CRF + Nat. Comms.
Cat4_CO2	PRIMAPHIST17	Cat5LtoNonFL_CO2	UNFCCC CRF + Nat. Comms.
Cat5_CO2	PRIMAPHIST17	Cat5GMCMWMM_C	UNFCCC CRF
Cat1_CH4	PRIMAPHIST17	Cat5A1ForestFires	UNFCCC Cat5 + EDGAR(IPCC Database)
Cat2367_CH4	PRIMAPHIST17	Cat5A1HWP_CO2	UNFCCC CRF + Nat. Comms.
Cat4_CH4	PRIMAPHIST17	Cat5bisA_CO2	UNFCCC CRF + NATCOMM.
Cat5_CH4	PRIMAPHIST17	Cat5bisB_CO2	UNFCCC CRF + NATCOMM.
Cat1_N2O	PRIMAPHIST17	Cat5bisC_CO2	UNFCCC CRF + NATCOMM.
Cat2367_N2O	PRIMAPHIST17	Cat5bisD_CO2	UNFCCC CRF + NATCOMM.
Cat4_N2O	PRIMAPHIST17	Cat5bisE_CO2	UNFCCC CRF + NATCOMM.
Cat5_N2O	PRIMAPHIST17	PRO_WM_Cat5_G	UNFCCC Annex I Reports
Cat0_HFCs	PRIMAPHIST17	Metric	GWP AR5
Cat0_PFCs	PRIMAPHIST17		
Cat0_SF6	PRIMAPHIST17		
Population	UN 2015 Population Projections MEDIUM		
GDP	IMF WEO 2015, PPP adjusted GDP, constant 2009 prices...		
IPCC WG3 Scenario	IMAGE AMPERE2-550-FullTech-HST		
PRIMAPHIST16 description:	www.pik-potsdam.de/primap-live/primap-hist/		
Gratefully acknowledged in particular:	PRIMAP, CAIT, CDIAC, EDGAR, IPCC, IEA, UNEP Gap Team, AMPERE Team and comments on earlier versions, in particular by Giacomo Grassi. Errors and misjudgements are our own. Malte Meinshausen & Ryan Alexander; The "Fiji COP23" Edition was enabled through support via the BMUB project UM14 41 4060		
This Factsheet is available at	www.climatecollege.unimelb.edu.au/indc-factsheets. Check out as well: www.climateactiontracker.org, www.mitigation-contributions.org, cait.wri.org, infographics.pbl.nl/indc, live.primap.org, www.unep.org/climatechange/pledgepipeline, and our twitter feed @ClimateCollege		
		climatecollege.unimelb.edu.au	
		AUSTRALIAN-GERMAN CLIMATE & ENERGY COLLEGE	

Meinshausen, Alexander et al., www.climatecollege.unimelb.edu.au/indc-factsheets, The University of Melbourne

Various 'fair' contributions for a global 'least-cost' 2°C path (total incl. LULUCF):

2025 rel. 2010:		2030 rel. 2010:		More info on www.mitigation-contributions.org	
LEADER	#N/A	LEADER	#N/A	No results shown, as 2010 total incl. LULUCF emissions below zero	
CDC	#N/A	CDC	#N/A	"Fair" contributions for a global 'least-cost' 2°C track:	
ECPC50	#N/A	ECPC50	#N/A	LEADER	Leader
ECPC90	#N/A	ECPC90	#N/A	CDC	Common-but-diff. per-cap. convergence
GDR	#N/A	GDR	#N/A	ECPC50	Eq. cum. Per-capita since 1950
INDC HIGH	#N/A	INDC HIGH	#N/A	ECPC90	Eq. cum. Per-capita since 1990
INDC LOW	#N/A	INDC LOW	#N/A	GDR	Greenhouse Development Rights
				#N/A	No available data