

# Viet Nam

Per-Capita Emissions in 2030 rel. 2015 (excl. LULUCF): **+65%**

NDC 2025

NDC 2030

2015 World Rank

2025 World Rank

2030 World Rank

Share of World Emissions excl. LULUCF (Rank):

0.7% #28

1.0% #19

1.1% #15

Per-Capita Emissions (tCO<sub>2</sub>eq/cap)

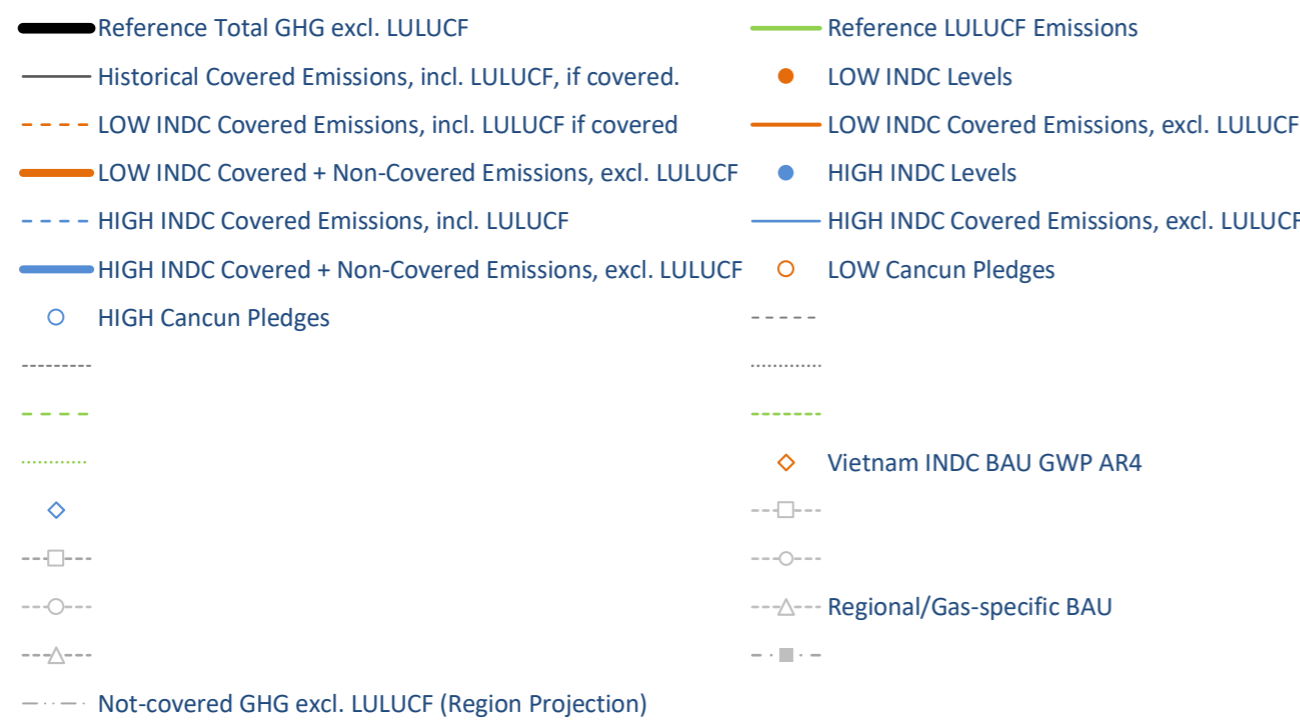
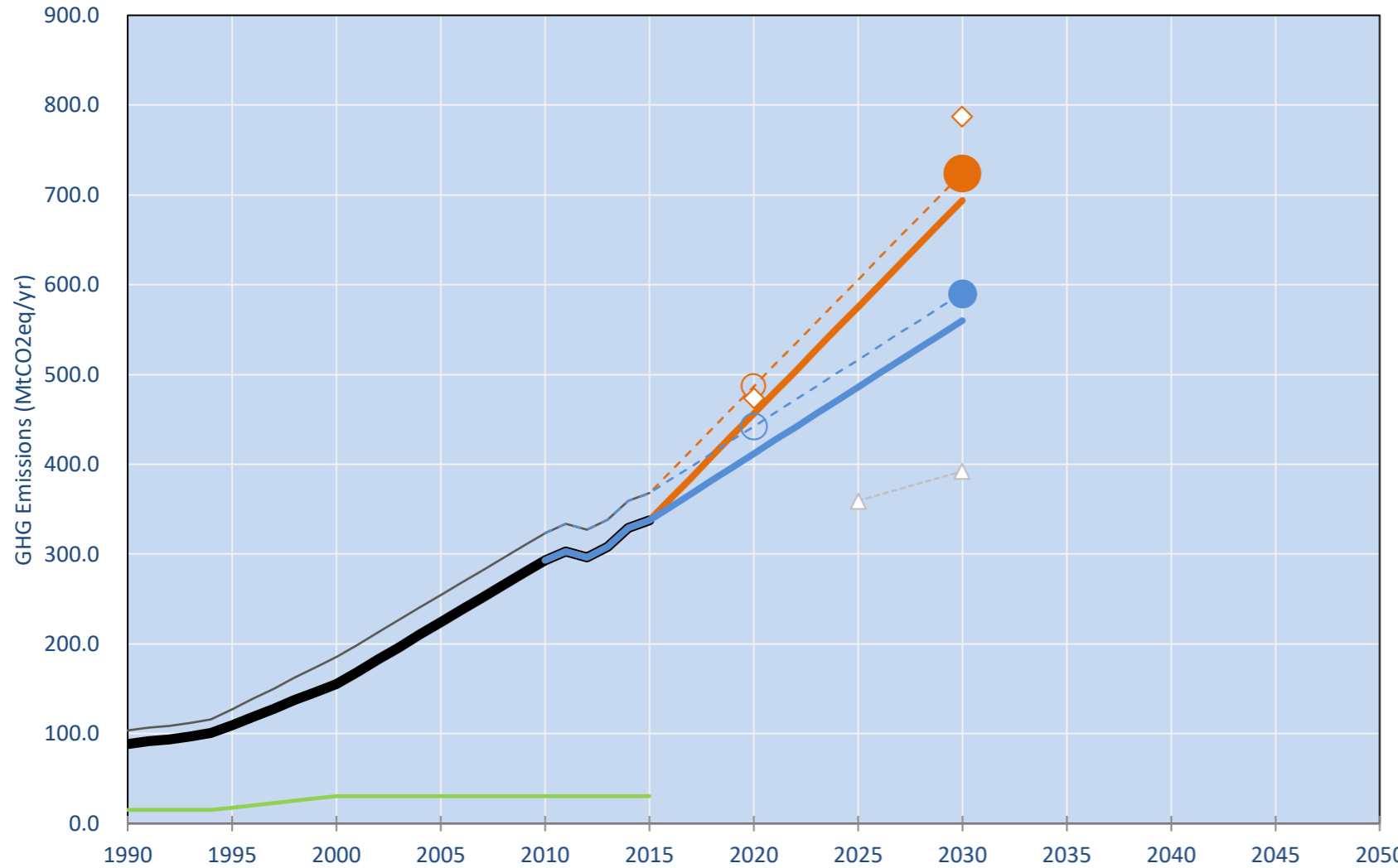
3.6t #112

5.2t #89

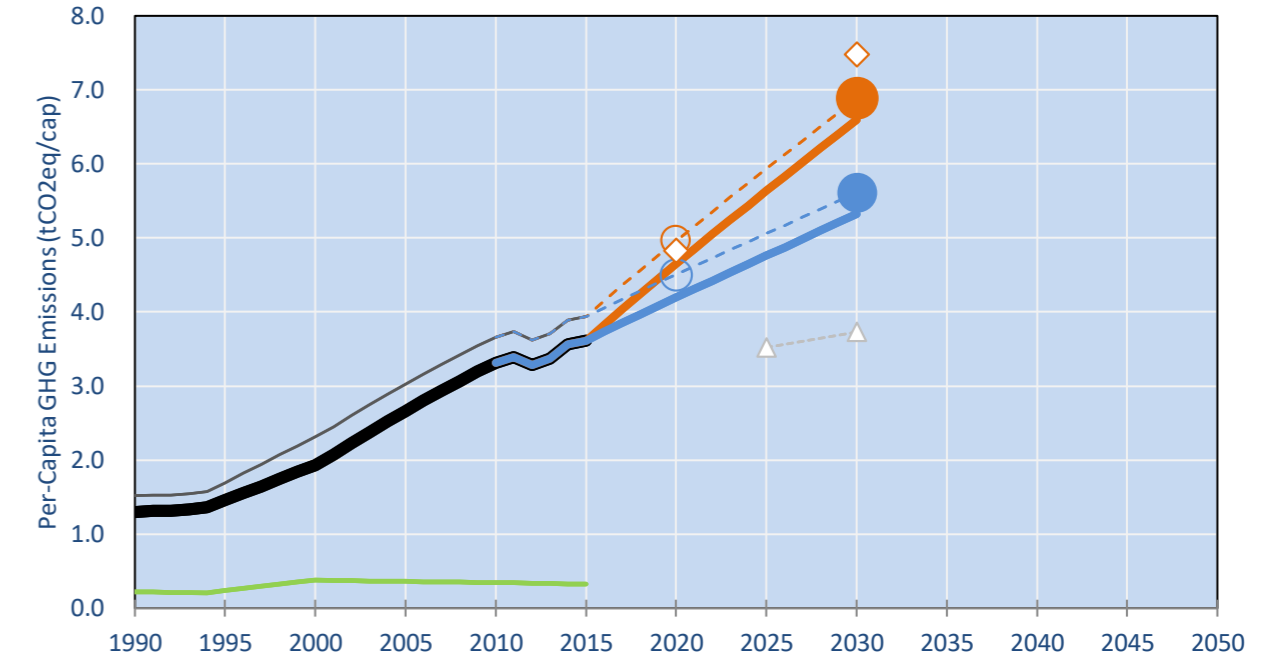
6t #79

INDC Submitted: 30/09/2015

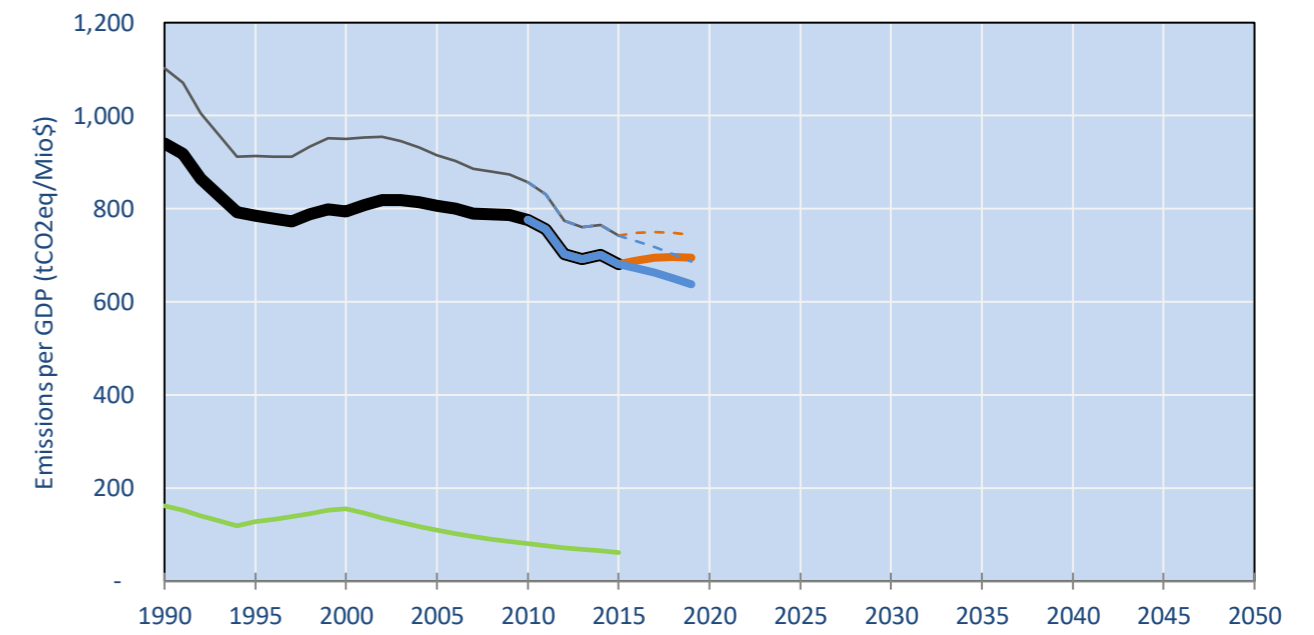
## GHG Emissions



## Per-Capita Emissions

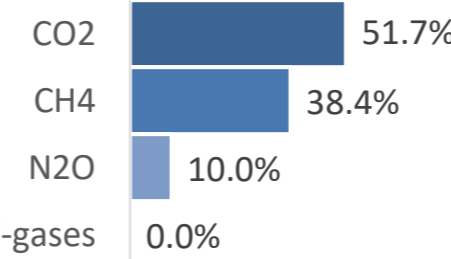


## GHG Emissions per GDP

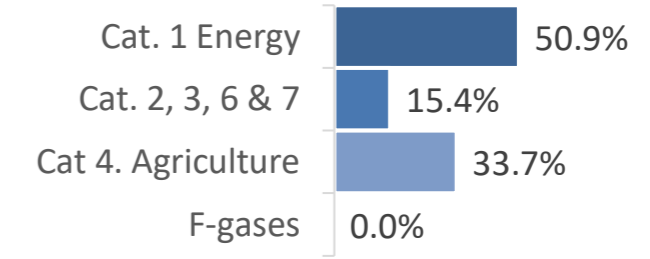


## 2015 Total GHG Emissions excl. LULUCF

By Gas:



By Sector:



## GHG Emissions

	1990	2000	2005	2010	2015	2020		2025		2030	
						low	high	low	high	low	high
(MtCO <sub>2</sub> eq/yr in GWP AR5)											
Assumed LULUCF Accounting Credits (-)/Debits (+)											
NDC covered LULUCF Emissions	15	30	30	30	30	30	30	30	30	30	30
NDC covered Emissions excl. LULUCF	88	155	224	293	338	456	412	575	486	694	560
Total GHG excl. LULUCF	88	155	224	293	338	456	412	575	486	694	560
Total GHG incl. LULUCF	104	185	254	324	368	487	442	606	516	724	591

## Relative GHG Emissions

	1990	2000	2005	2010	2015	2020		2025		2030	
						low	high	low	high	low	high
Total excl. LULUCF											
Relative 1990	100%	175%	253%	331%	382%	516%	465%	650%	549%	784%	633%
Relative 2000	57%	100%	145%	189%	218%	294%	266%	371%	313%	448%	361%
Relative 2005	40%	69%	100%	131%	151%	204%	184%	257%	217%	310%	250%
Relative 2010	30%	53%	76%	100%	115%	156%	140%	196%	166%	237%	191%
Relative 2015	26%	46%	66%	87%	100%	135%	122%	170%	144%	206%	166%

## Per-Capita Emissions

	1990	2000	2005	2010	2015	2020		2025		2030	
						low	high	low	high	low	high
Total excl. LULUCF											
Population (Mio)	68	80	84	88	93	98	98	102	102	105	105
Per-Capita Emissions (tCO <sub>2</sub> eq/cap)	1.3	1.9	2.7	3.3	3.6	4.6	4.2	5.6	4.8	6.6	5.3
Relative 1990	100%	149%	205%	256%	278%	358%	323%	434%	367%	508%	410%
Relative 2000	67%	100%	138%	172%	187%	241%	217%	292%	247%	342%	276%
Relative 2005	49%	73%	100%	125%	136%	175%	158%	212%	179%	248%	200%
Relative 2010	39%	58%	80%	100%	109%	140%	126%	170%	143%	199%	160%
Relative 2015	36%	53%	74%	92%	100%	129%	116%	156%	132%	183%	147%

## Data Sources:

Cat1_CO2	PRIMAPHIST17	Cat5A1_CO2	UNFCCC CRF + Nat. Comms.
Cat2367_CO2	PRIMAPHIST17	Cat5A2_CO2	UNFCCC CRF + Nat. Comms.
Cat4_CO2	PRIMAPHIST17	Cat5LtoNonFL_CO2	UNFCCC CRF + Nat. Comms.
Cat5_CO2	PRIMAPHIST17	Cat5GCMCMWM_C	UNFCCC CRF
Cat1_CH4	PRIMAPHIST17	Cat5A1ForestFires	UNFCCC Cat5 + EDGAR(IPCC Database)
Cat2367_CH4	PRIMAPHIST17	Cat5A1HWP_CO2	UNFCCC CRF + Nat. Comms.
Cat4_CH4	PRIMAPHIST17	Cat5bisA_CO2	UNFCCC CRF + NATCOMM.
Cat5_CH4	PRIMAPHIST17	Cat5bisB_CO2	UNFCCC CRF + NATCOMM.
Cat1_N2O	PRIMAPHIST17	Cat5bisC_CO2	UNFCCC CRF + NATCOMM.
Cat2367_N2O	PRIMAPHIST17	Cat5bisD_CO2	UNFCCC CRF + NATCOMM.
Cat4_N2O	PRIMAPHIST17	Cat5bisE_CO2	UNFCCC CRF + NATCOMM.
Cat5_N2O	PRIMAPHIST17	PRO_WM_Cat5_G	UNFCCC Annex I Reports
Cat0_HFCs	PRIMAPHIST17	Metric	GWP AR5
Cat0_PFCs	PRIMAPHIST17		
Cat0_SF6	PRIMAPHIST17		
Population	UN 2015 Population Projections MEDIUM		
GDP	IMF WEO 2015, PPP adjusted GDP, constant 2009 prices...		
	IPCC WG3 Scenario IMAGE   AMPERE2-550-FullTech-HST		
	PRIMAPHIST16 description: www.pik-potsdam.de/primap-live/primap-hist/		
	Gratefully acknowledged in particular: PRIMAP, CAIT, CDIAC, EDGAR, IPCC, IEA, UNEP Gap Team, AMPERE Team and comments on earlier versions, in particular by Giacomo Grassi. Errors and misjudgements are our own. Malte Meinshausen & Ryan Alexander; The "Fiji COP23" Edition was enabled through support via the BMUB project UM14 41 4060		
	This Factsheet is available at www.climatecollege.unimelb.edu.au/indc-factsheets. Check out as well: www.climateactiontracker.org, www.mitigation-contributions.org, cait.wri.org, infographics.pbl.nl/indc, live.primap.org, www.unep.org/climatechange/pledgepipeline, and our twitter feed @ClimateCollege		
		climatecollege.unimelb.edu.au	
		AUSTRALIAN-GERMAN CLIMATE & ENERGY COLLEGE	

## Various 'fair' contributions for a global 'least-cost' 2°C path (total incl. LULUCF):

## More info on www.mitigation-contributions.org

2025 rel. 2010:

2030 rel. 2010:

LEADER	#N/A	LEADER	#N/A
CDC	#N/A	CDC	#N/A
ECPC50	#N/A	ECPC50	#N/A
ECPC90	#N/A	ECPC90	#N/A
GDR	#N/A	GDR	#N/A
INDC HIGH	60%	INDC HIGH	83%
INDC LOW	87%	INDC LOW	124%

## "Fair" contributions for a global 'least-cost' 2°C track:

LEADER	Leader
CDC	Common-but-diff. per-cap. convergence
ECPC50	Eq. cum. Per-capita since 1950
ECPC90	Eq. cum. Per-capita since 1990
GDR	Greenhouse Development Rights
#N/A	No available data