

Shown: 2025 & 2030: Min/max of unconditional and conditional targets

Paris Agreement ratified on: 21/07/2017

Shown are averages for low and high or conditional and unconditional INDCs and their inter-extrapolations

Venezuela (Bolivarian Republic of)

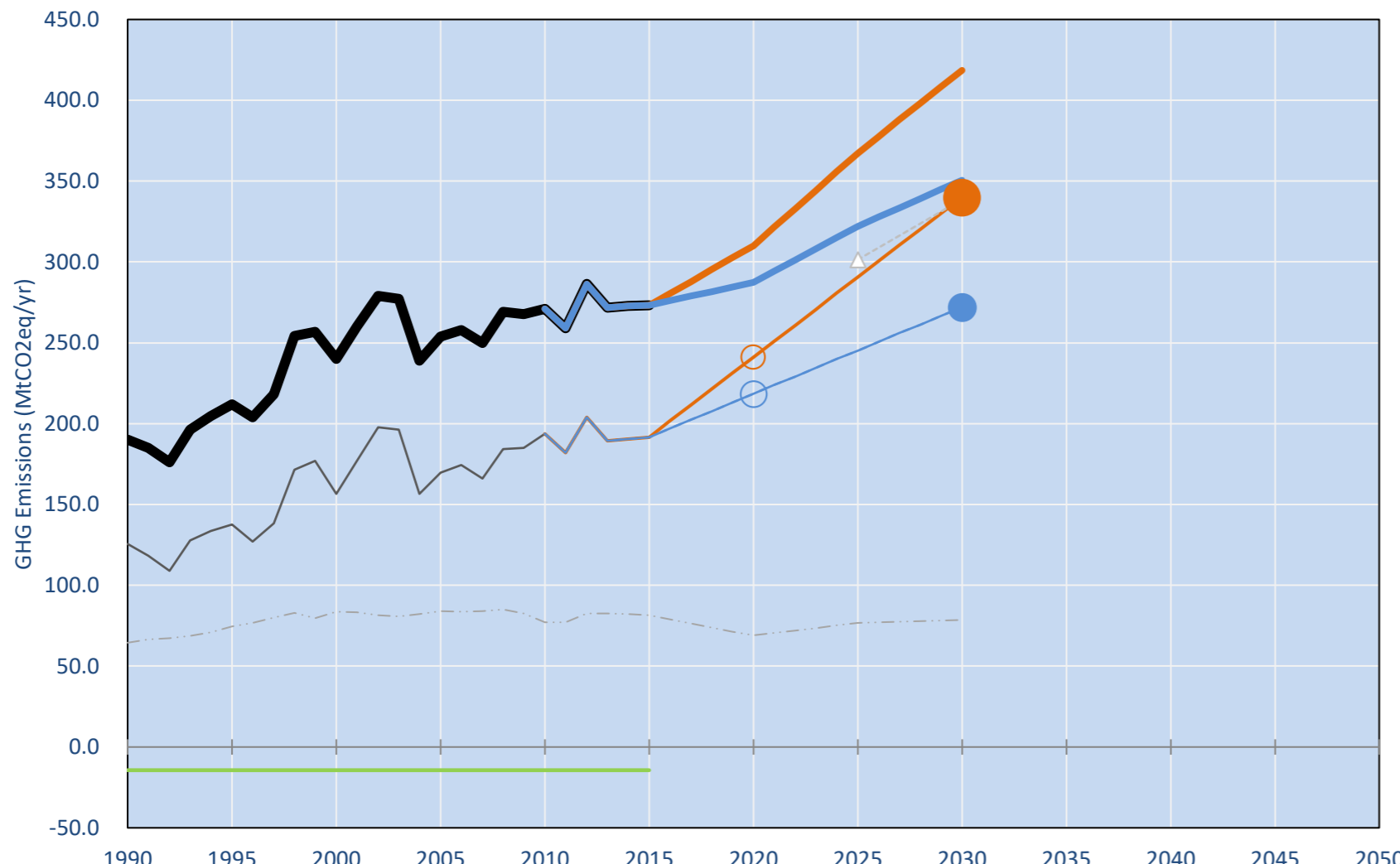
Per-Capita Emissions in 2030 rel. 2015 (excl. LULUCF): **+19%**

NDC 2025	NDC 2030	2015 World Rank	2025 World Rank	2030 World Rank
	0% rel. BAU of 340 Mt	0.6% #34	0.6% #32	0.7% #30
	-20% rel. BAU of 340 Mt	8.8t #45	9.9t #33	10.5t #29

NDC: Reductions of 20% below BAU for CO2 by 2030. Conditional. . .

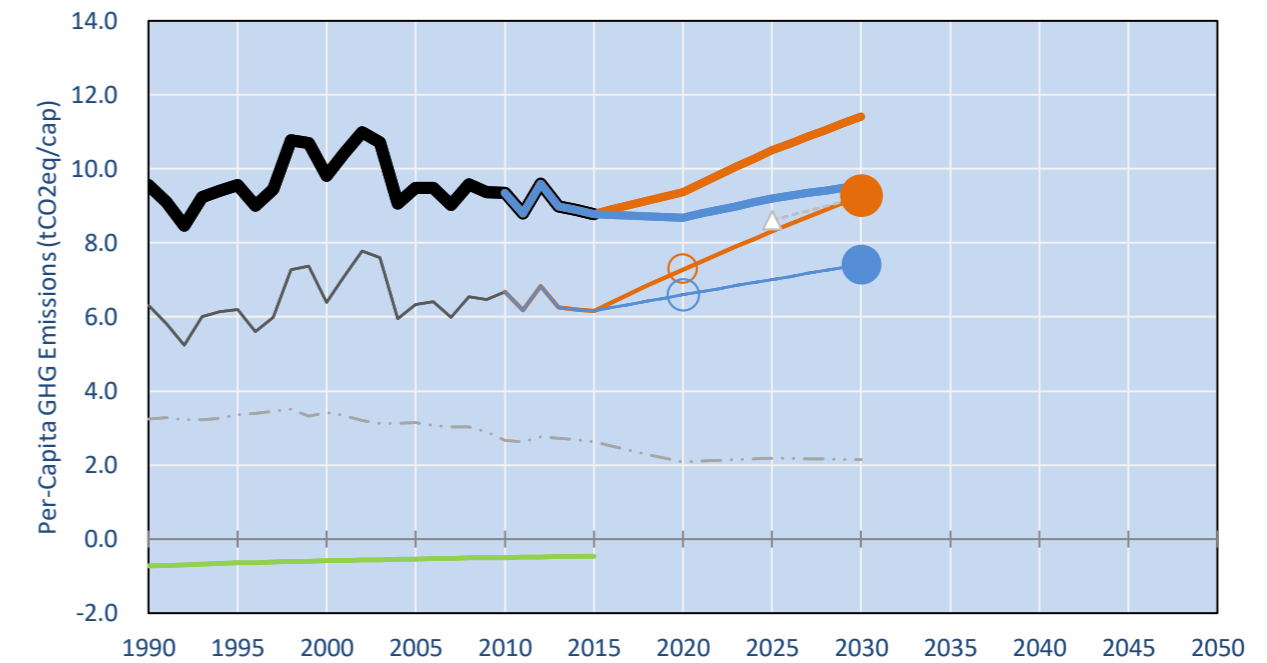
INDC Submitted: 15/12/2015

GHG Emissions

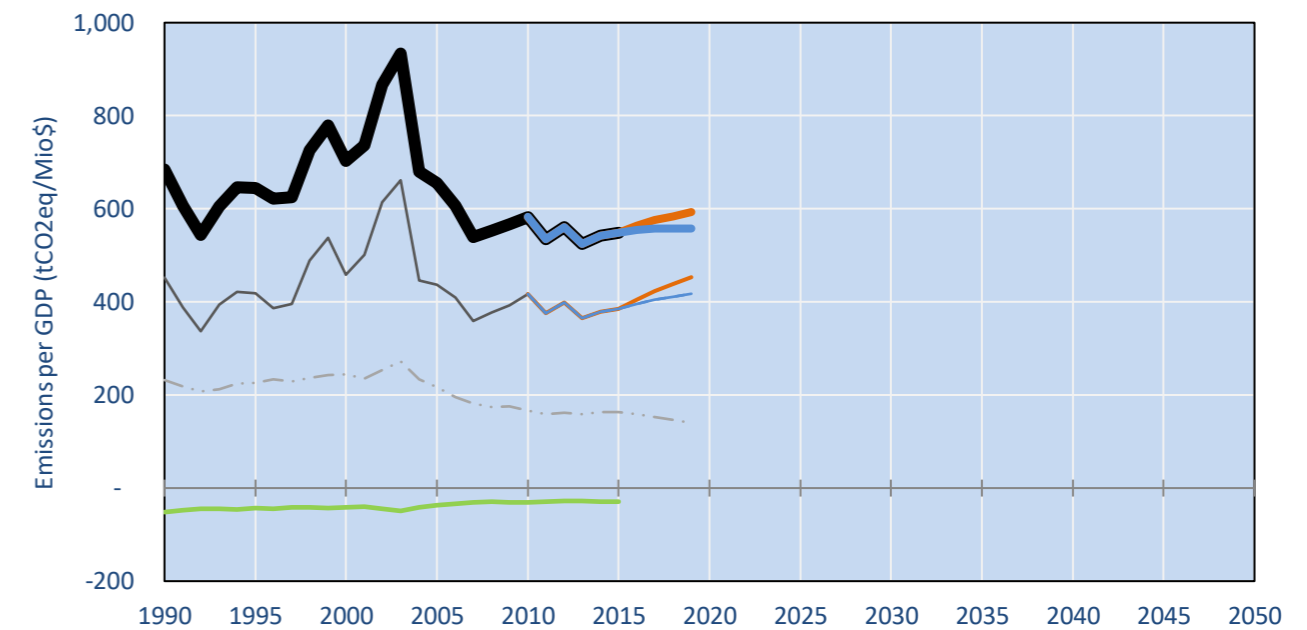


- Reference Total GHG excl. LULUCF
- Historical Covered Emissions, incl. LULUCF, if covered.
- LOW INDC Covered Emissions, incl. LULUCF if covered
- LOW INDC Covered + Non-Covered Emissions, excl. LULUCF
- HIGH INDC Covered Emissions, incl. LULUCF
- HIGH INDC Covered + Non-Covered Emissions, excl. LULUCF
- HIGH Cancun Pledges
- Reference LULUCF Emissions
- LOW INDC Levels
- LOW INDC Covered Emissions, excl. LULUCF
- HIGH INDC Levels
- HIGH INDC Covered Emissions, excl. LULUCF
- LOW Cancun Pledges
- Regional/Gas-specific BAU
- Not-covered GHG excl. LULUCF (Region Projection)

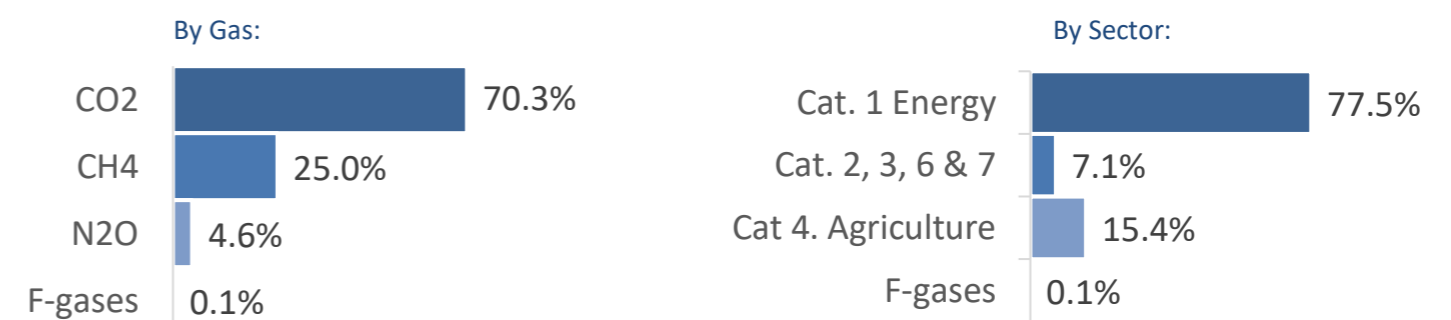
Per-Capita Emissions



GHG Emissions per GDP



2015 Total GHG Emissions excl. LULUCF



GHG Emissions

	1990	2000	2005	2010	2015	2020		2025		2030	
(MtCO2eq/yr in GWP AR5)						low	high	low	high	low	high
Assumed LULUCF Accounting Credits (-)/Debits (+)	-	-	-	-	-	-	-	-	-	-	-
NDC covered LULUCF Emissions	-	-	-	-	-	-	-	-	-	-	-
NDC covered Emissions excl. LULUCF	125	157	170	194	192	241	218	291	245	340	272
Total GHG excl. LULUCF	190	240	254	271	273	310	287	367	322	419	351
Total GHG incl. LULUCF	176	226	239	257	259	296	273	353	308	404	336

Relative GHG Emissions

	1990	2000	2005	2010	2015	2020		2025		2030	
Total excl. LULUCF						low	high	low	high	low	high
Relative 1990	100%	126%	134%	143%	144%	163%	151%	193%	169%	220%	185%
Relative 2000	79%	100%	106%	113%	114%	129%	120%	153%	134%	174%	146%
Relative 2005	75%	95%	100%	107%	108%	122%	113%	145%	127%	165%	138%
Relative 2010	70%	89%	94%	100%	101%	114%	106%	136%	119%	154%	129%
Relative 2015	70%	88%	93%	99%	100%	114%	105%	134%	118%	153%	128%

Per-Capita Emissions

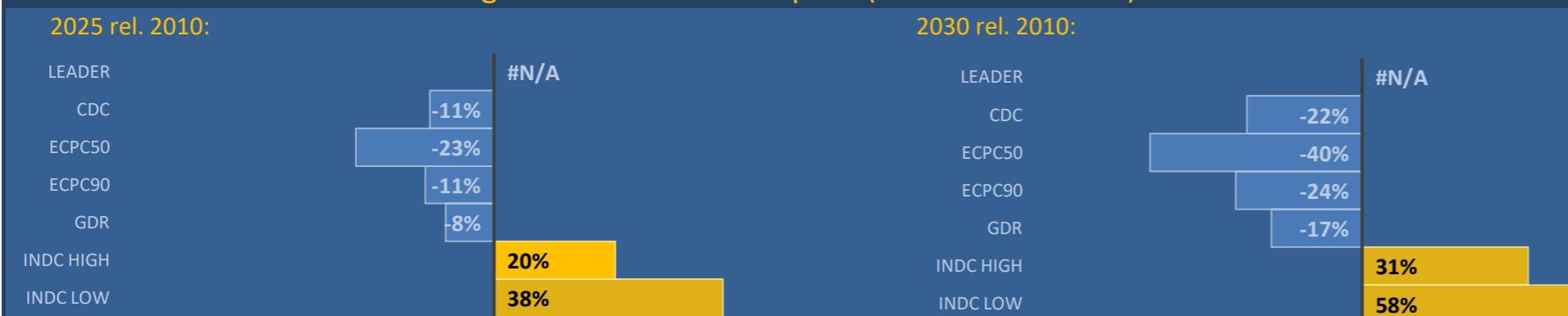
	1990	2000	2005	2010	2015	2020		2025		2030	
Total excl. LULUCF						low	high	low	high	low	high
Population (Mio)	20	24	27	29	31	33	33	35	35	37	37
Per-Capita Emissions (tCO2eq/cap)	9.6	9.8	9.5	9.3	8.8	9.4	8.7	10.5	9.2	11.4	9.6
Relative 1990	100%	103%	99%	98%	92%	98%	91%	110%	96%	119%	100%
Relative 2000	97%	100%	97%	95%	90%	95%	88%	107%	94%	116%	97%
Relative 2005	101%	103%	100%	99%	93%	99%	92%	111%	97%	120%	101%
Relative 2010	102%	105%	101%	100%	94%	100%	93%	112%	99%	122%	102%
Relative 2015	109%	112%	108%	106%	100%	107%	99%	120%	105%	130%	109%

Data Sources:

Cat1_CO2 PRIMAPHIST17
 Cat2367_CO2 PRIMAPHIST17
 Cat4_CO2 PRIMAPHIST17
 Cat5_CO2 PRIMAPHIST17
 Cat1_CH4 PRIMAPHIST17
 Cat2367_CH4 PRIMAPHIST17
 Cat4_CH4 PRIMAPHIST17
 Cat5_CH4 PRIMAPHIST17
 Cat1_N2O PRIMAPHIST17
 Cat2367_N2O PRIMAPHIST17
 Cat4_N2O PRIMAPHIST17
 Cat5_N2O PRIMAPHIST17
 Cat0_HFCs PRIMAPHIST17
 Cat0_PFCs PRIMAPHIST17
 Cat0_SF6 PRIMAPHIST17
 Population UN 2015 Population Projections MEDIUM
 GDP IMF WEO 2015, PPP adjusted GDP, constant 2009 prices...
 PRIMAPHIST16 Scenario IMAGE | AMPERE2-550-FullTech-HST
 PRIMAPHIST16 description: www.pik-potsdam.de/primap-live/primap-hist/
 Gratefully acknowledged in particular: PRIMAP, CAIT, CDIAC, EDGAR, IPCC, IEA, UNEP GAP Team, AMPERE Team and comments on earlier versions, in particular by Giacomo Grassi. Errors and misjudgements are our own. Malte Meinshausen & Ryan Alexander; The "Fiji COP23" Edition was enabled through support via the BMUB project UM14 41 4060
 This Factsheet is available at www.climatecollege.unimelb.edu.au/indc-factsheets. Check out as well: www.climateactiontracker.org, www.mitigation-contributions.org, cait.wri.org, infographics.pbl.nl/indc, live.primap.org, www.unep.org/climatechange/pledgepipeline, and our twitter feed @ClimateCollege
 cat5A1_CO2 UNFCCC CRF + Nat. Comms.
 cat5A2_CO2 UNFCCC CRF + Nat. Comms.
 Cat5LtoNonFL_CO UNFCCC CRF + Nat. Comms.
 Cat5GCMCMWM_C UNFCCC CRF
 Cat5A1ForestFires UNFCCC Cat5 + EDGAR(IPCC Database)
 Cat5A1HWP_CO2 UNFCCC CRF + Nat. Comms.
 Cat5bisA_CO2 UNFCCC CRF + NATCOMM.
 Cat5bisB_CO2 UNFCCC CRF + NATCOMM.
 Cat5bisC_CO2 UNFCCC CRF + NATCOMM.
 Cat5bisD_CO2 UNFCCC CRF + NATCOMM.
 Cat5bisE_CO2 UNFCCC CRF + NATCOMM.
 PRO_WM_Cat5_G UNFCCC Annex I Reports
 Metric GWP AR5
 climatecollege.unimelb.edu.au
 AUSTRALIAN-GERMAN CLIMATE & ENERGY COLLEGE

Meinshausen, Alexander et al., www.climatecollege.unimelb.edu.au/indc-factsheets, The University of Melbourne

Various 'fair' contributions for a global 'least-cost' 2°C path (total incl. LULUCF):



More info on www.mitigation-contributions.org

Shown fair contributions only indicative
 "Fair" contributions for a global 'least-cost' 2°C track:
 LEADER Leader
 CDC Common-but-diff. per-cap. convergence
 ECPC50 Eq. cum. Per-capita since 1950
 ECPC90 Eq. cum. Per-capita since 1990
 GDR Greenhouse Development Rights
 #N/A No available data