

# Venezuela (Bolivarian Republic of)

Per-Capita Emissions in 2030 rel. 2015 (excl. LULUCF): **+21%**

NDC 2025

NDC 2030

2015 World Rank

2025 World Rank

2030 World Rank

Share of World Emissions excl. LULUCF (Rank):

0.6% #34

0.6% #31

0.7% #29

Per-Capita Emissions (tCO<sub>2</sub>eq/cap)

8.7t #47

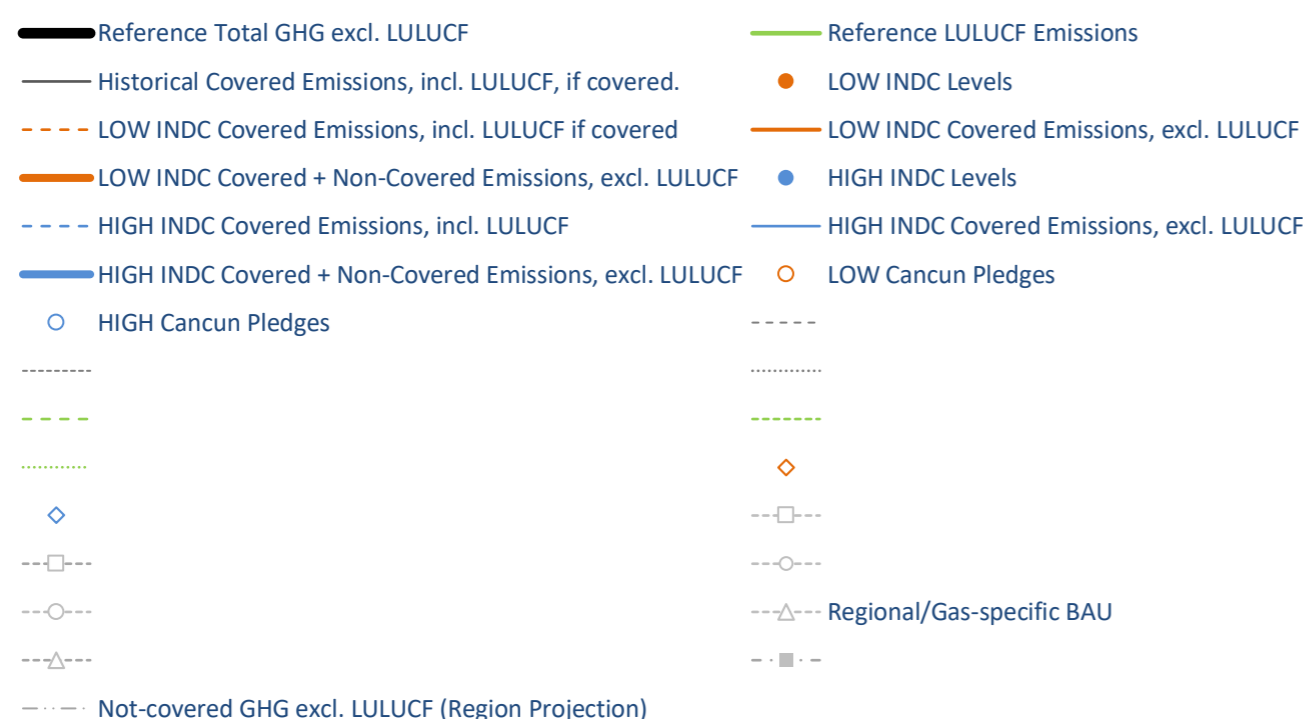
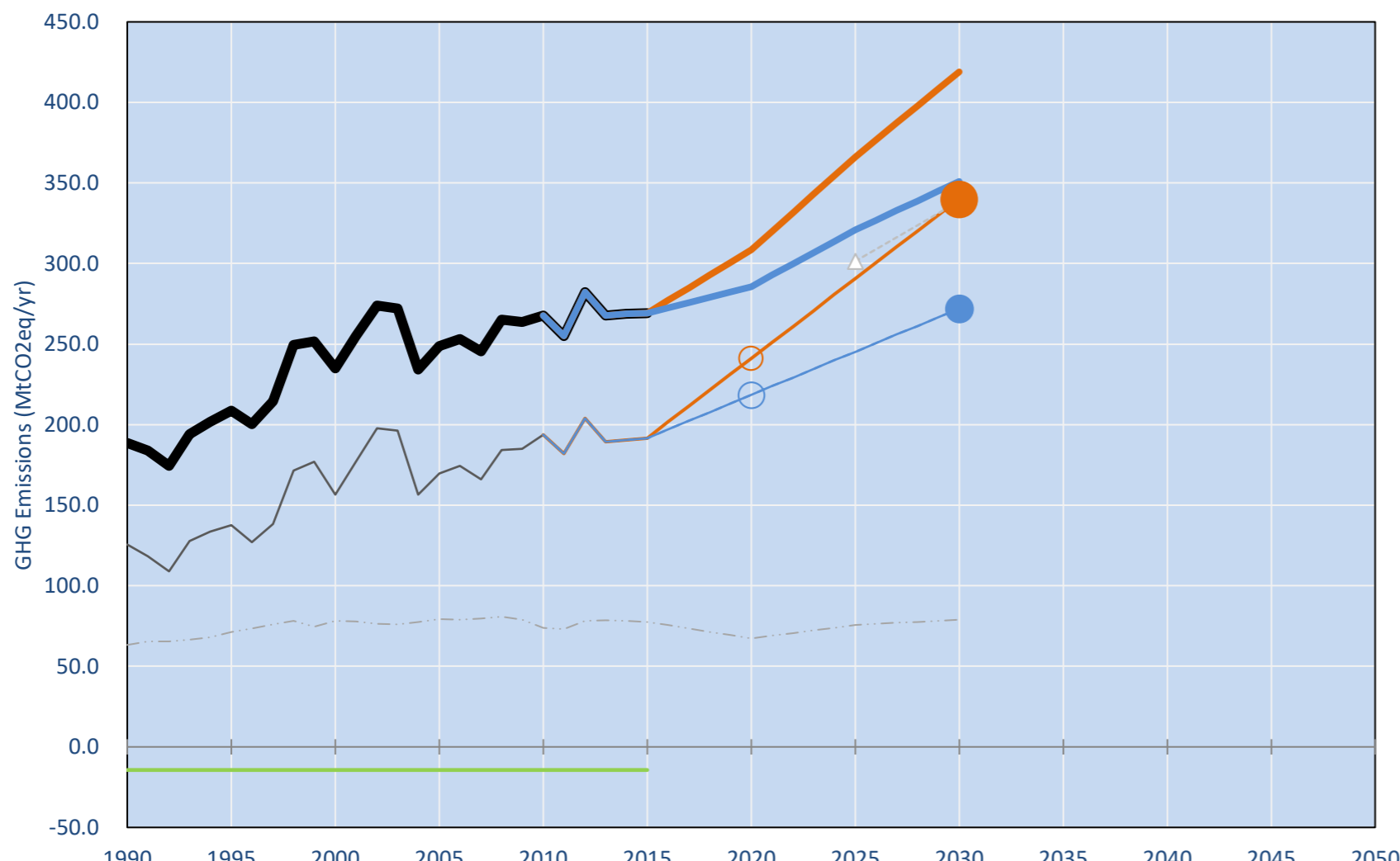
9.8t #35

10.5t #31

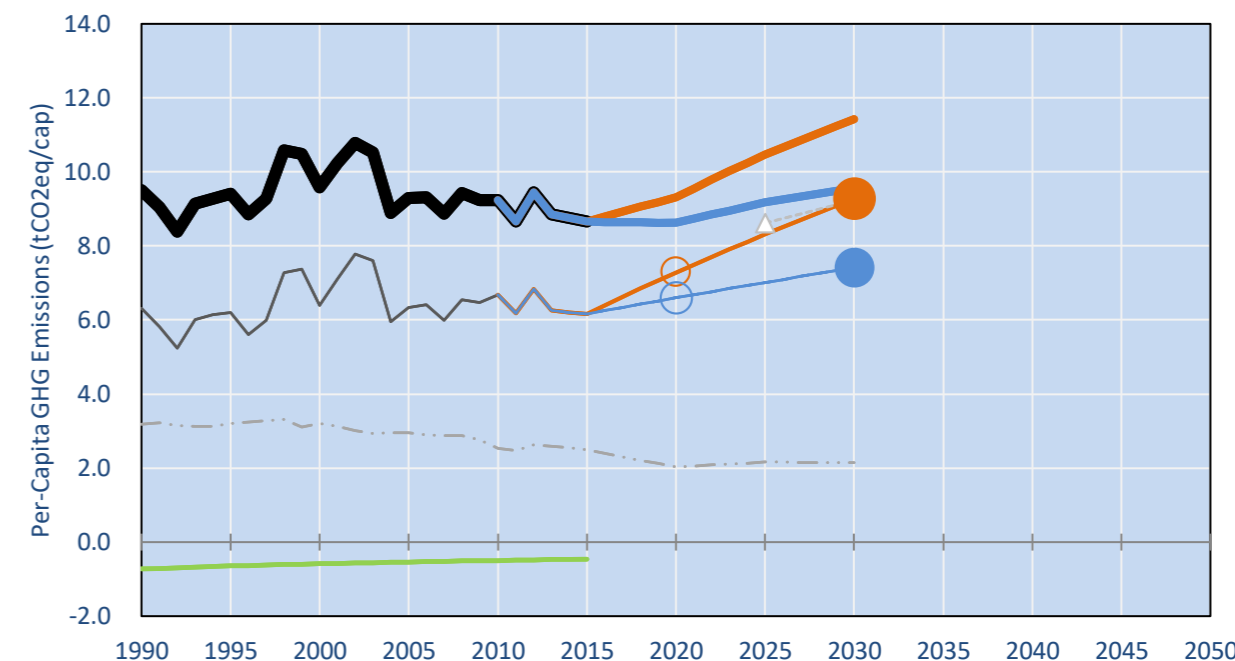
NDC: Reductions of 20% below BAU for CO<sub>2</sub> by 2030. Conditional. . .

INDC Submitted: 15/12/2015

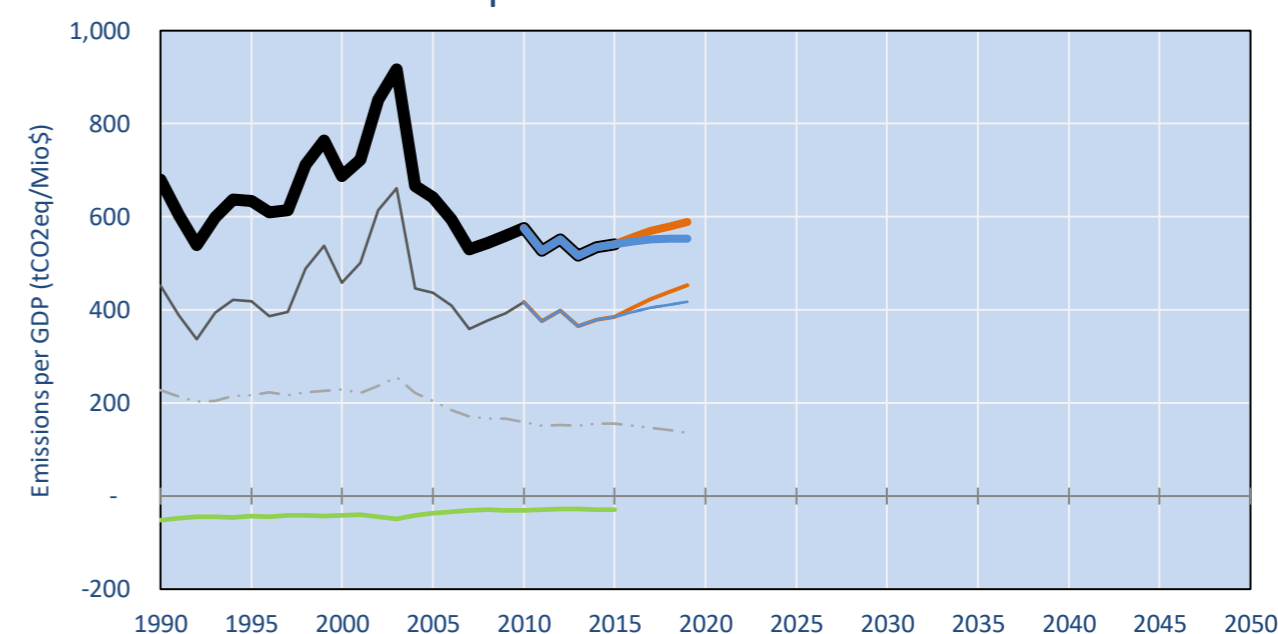
## GHG Emissions



## Per-Capita Emissions

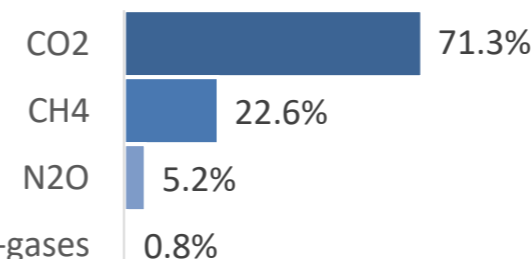


## GHG Emissions per GDP

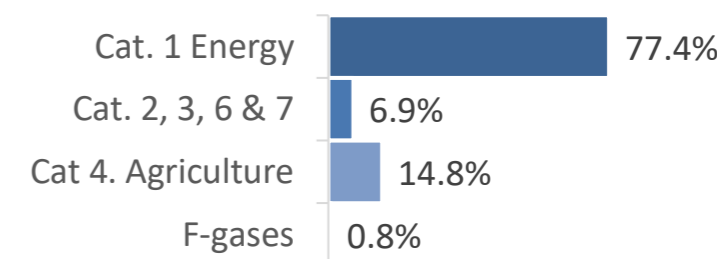


## 2015 Total GHG Emissions excl. LULUCF

By Gas:



By Sector:



## GHG Emissions

	1990	2000	2005	2010	2015	2020		2025		2030	
(MtCO <sub>2</sub> eq/yr in GWP AR4)						low	high	low	high	low	high
Assumed LULUCF Accounting Credits (-)/Debits (+)	-	-	-	-	-	-	-	-	-	-	-
NDC covered LULUCF Emissions	-	-	-	-	-	-	-	-	-	-	-
NDC covered Emissions excl. LULUCF	125	157	170	194	192	241	218	291	245	340	272
Total GHG excl. LULUCF	189	235	249	268	269	308	286	366	321	419	351
Total GHG incl. LULUCF	174	220	234	253	255	294	271	352	306	405	337

## Relative GHG Emissions

	1990	2000	2005	2010	2015	2020		2025		2030	
Total excl. LULUCF						low	high	low	high	low	high
Relative 1990	100%	124%	132%	142%	143%	163%	151%	194%	170%	222%	186%
Relative 2000	80%	100%	106%	114%	115%	131%	122%	156%	137%	178%	149%
Relative 2005	76%	94%	100%	108%	108%	124%	115%	147%	129%	168%	141%
Relative 2010	71%	88%	93%	100%	101%	115%	107%	137%	120%	157%	131%
Relative 2015	70%	87%	92%	99%	100%	115%	106%	136%	119%	156%	130%

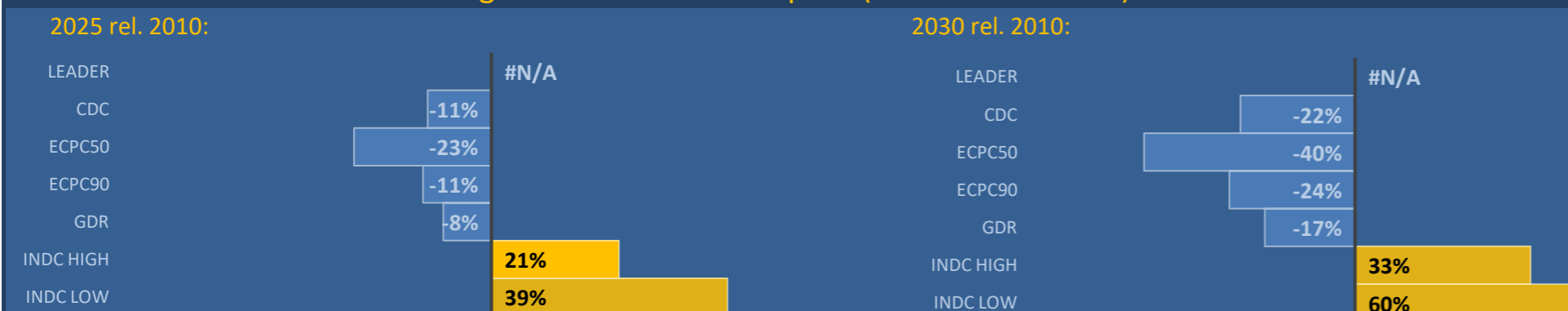
## Per-Capita Emissions

	1990	2000	2005	2010	2015	2020		2025		2030	
Total excl. LULUCF						low	high	low	high	low	high
Population (Mio)	20	24	27	29	31	33	33	35	35	37	37
Per-Capita Emissions (tCO <sub>2</sub> eq/cap)	9.5	9.6	9.3	9.2	8.7	9.3	8.6	10.5	9.2	11.4	9.6
Relative 1990	100%	101%	98%	97%	91%	98%	91%	110%	97%	120%	101%
Relative 2000	99%	100%	97%	96%	90%	97%	90%	109%	96%	119%	100%
Relative 2005	102%	103%	100%	99%	93%	100%	93%	113%	99%	123%	103%
Relative 2010	103%	104%	101%	100%	94%	101%	94%	113%	99%	124%	104%
Relative 2015	110%	111%	107%	107%	100%	108%	100%	121%	106%	132%	111%

## Data Sources:

Cat1\_CO2 PRIMAPHIST17  
 Cat2367\_CO2 PRIMAPHIST17  
 Cat4\_CO2 PRIMAPHIST17  
 Cat5\_CO2 PRIMAPHIST17  
 Cat1\_CH4 PRIMAPHIST17  
 Cat2367\_CH4 PRIMAPHIST17  
 Cat4\_CH4 PRIMAPHIST17  
 Cat5\_CH4 PRIMAPHIST17  
 Cat1\_N2O PRIMAPHIST17  
 Cat2367\_N2O PRIMAPHIST17  
 Cat4\_N2O PRIMAPHIST17  
 Cat5\_N2O PRIMAPHIST17  
 Cat0\_HFCs PRIMAPHIST17  
 Cat0\_PFCs PRIMAPHIST17  
 Cat0\_SF6 PRIMAPHIST17  
 Population UN 2015 Population Projections MEDIUM  
 GDP IMF WEO 2015, PPP adjusted GDP, constant 2009 prices...  
 PRIMAPHIST16 Scenario IMAGE | AMPERE2-550-FullTech-HST  
 PRIMAPHIST16 description: www.pik-potsdam.de/primap-live/primap-hist/  
 Gratefully acknowledged in particular: PRIMAP, CAIT, CDIAC, EDGAR, IPCC, IEA, UNEP GAP Team, AMPERE Team and comments on earlier versions, in particular by Giacomo Grassi. Errors and misjudgements are our own. Malte Meinshausen & Ryan Alexander; The "Fiji COP23" Edition was enabled through support via the BMUB project UM14 41 4060  
 This Factsheet is available at www.climatecollege.unimelb.edu.au/indc-factsheets. Check out as well: www.climateactiontracker.org, www.mitigation-contributions.org, cait.wri.org, infographics.pbl.nl/indc, live.primap.org, www.unep.org/climatechange/pledgepipeline, and our twitter feed @ClimateCollege  
 climatecollege.unimelb.edu.au  
 AUSTRALIAN-GERMAN CLIMATE & ENERGY COLLEGE

## Various 'fair' contributions for a global 'least-cost' 2°C path (total incl. LULUCF):



## More info on www.mitigation-contributions.org

Shown fair contributions only indicative  
 "Fair" contributions for a global 'least-cost' 2°C track:  
 LEADER Leader  
 CDC Common-but-diff. per-cap. convergence  
 ECPC50 Eq. cum. Per-capita since 1950  
 ECPC90 Eq. cum. Per-capita since 1990  
 GDR Greenhouse Development Rights  
 #N/A No available data