

Shown: 2025 & 2030: Min/max of unconditional and conditional targets

Shown are averages for low and high or conditional and unconditional INDCs and their inter-extrapolations

Paris Agreement ratified on: 21/09/2016

Per-Capita Emissions in 2030 rel. 2015 (excl. LULUCF): **-25%**

# Vanuatu

NDC 2025

NDC 2030

2015 World Rank

2025 World Rank

2030 World Rank

0% rel. BAU of 0.2 Mt

Share of World Emissions excl. LULUCF (Rank):

0.0% #176

0.0% #176

0.0% #177

-33% rel. BAU of 0.2 Mt

Per-Capita Emissions (tCO2eq/cap)

2.4t #135

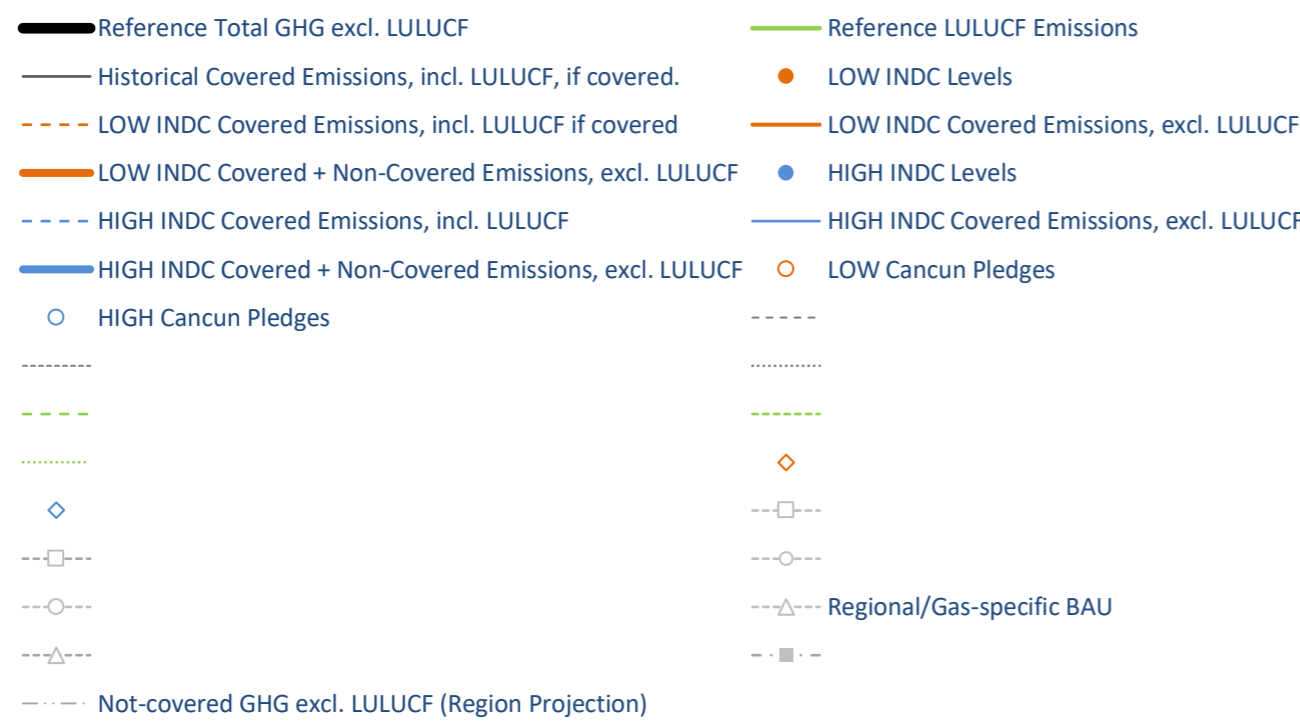
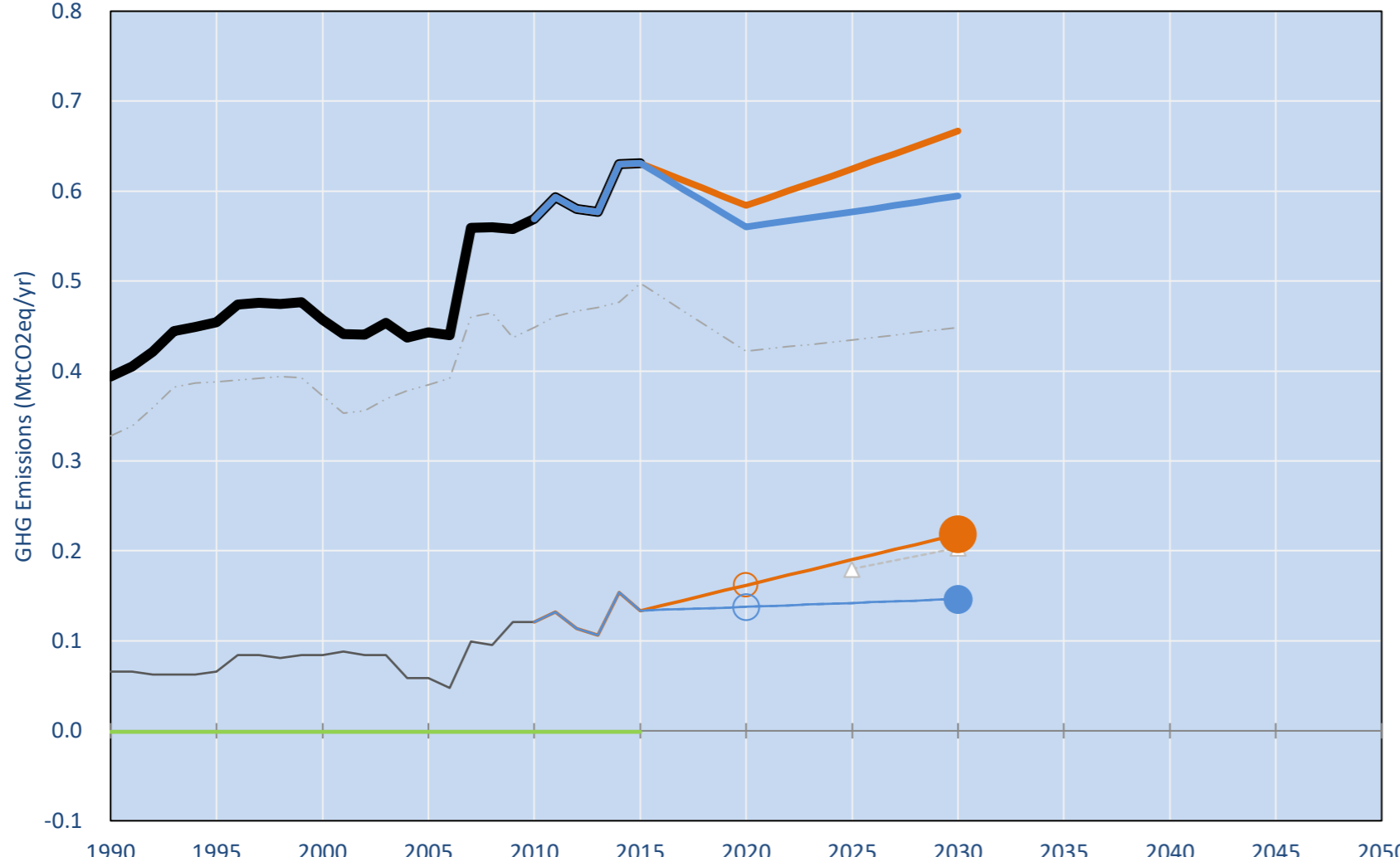
1.9t #159

1.8t #159

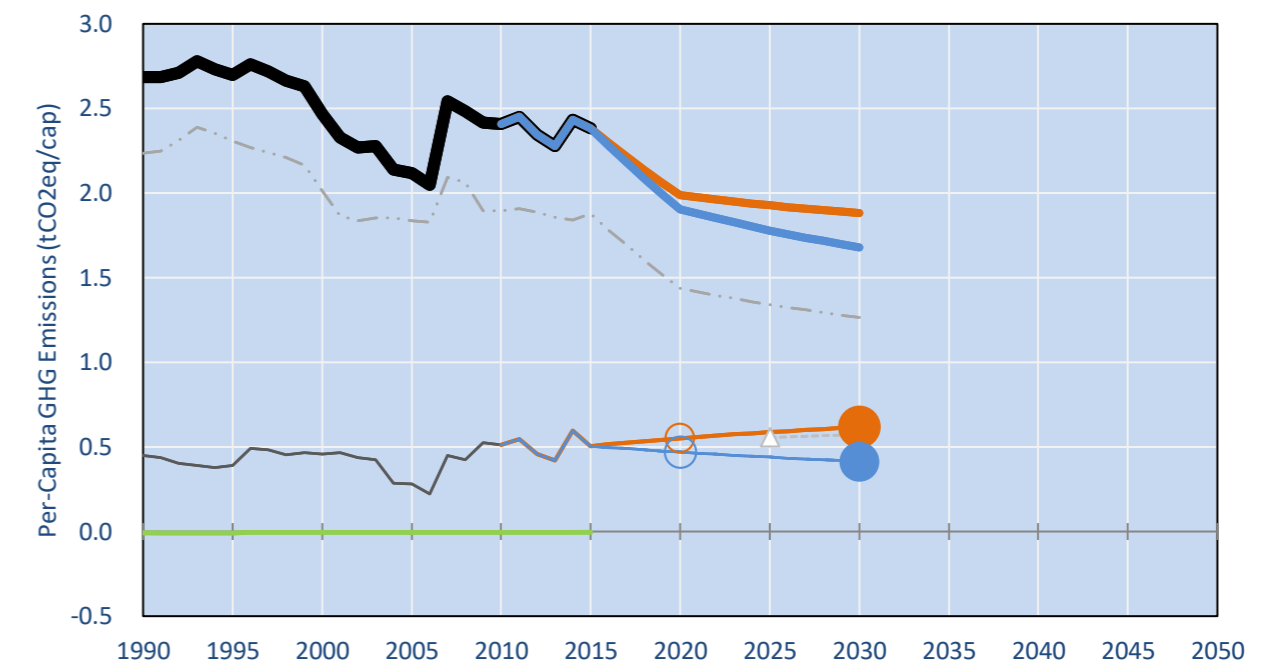
NDC: Reduction of emissions by 100% below BAU for electricity sub-sector and 30% for the energy sector by approaching 100% renewable energy subject to funding and support. (n/a (only CO2))

INDC Submitted: 29/09/2015

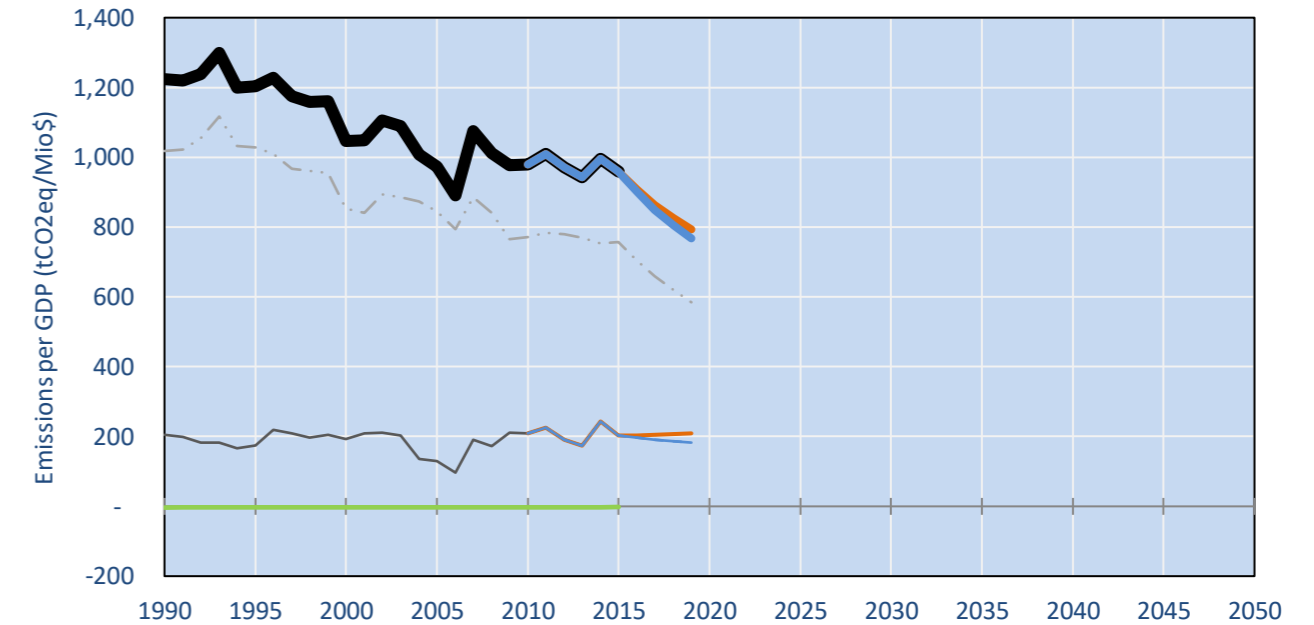
## GHG Emissions



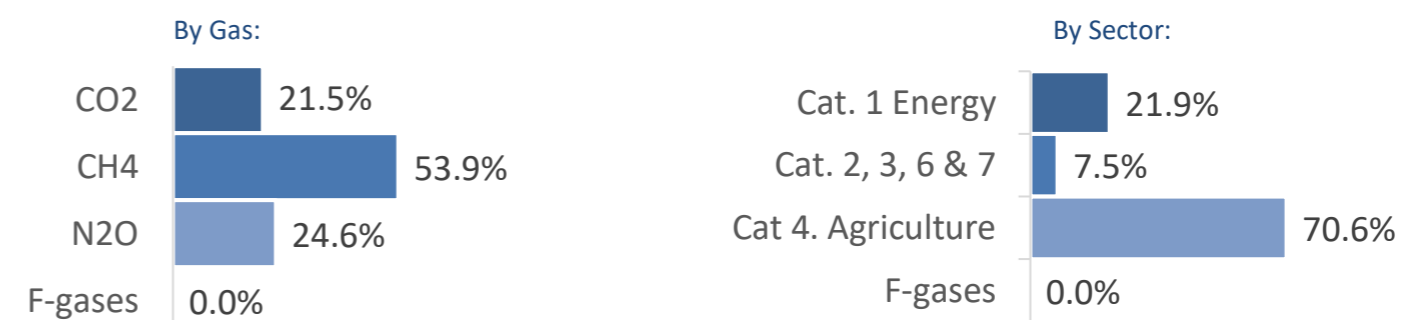
## Per-Capita Emissions



## GHG Emissions per GDP



## 2015 Total GHG Emissions excl. LULUCF



## GHG Emissions

	1990	2000	2005	2010	2015	2020		2025		2030	
(MtCO2eq/yr in GWP SAR)						low	high	low	high	low	high
Assumed LULUCF Accounting Credits (-)/Debits (+)											
NDC covered LULUCF Emissions											
NDC covered Emissions excl. LULUCF	0	0	0	0	0	0	0	0	0	0	0
Total GHG excl. LULUCF	0	0	0	1	1	1	1	1	1	1	1
Total GHG incl. LULUCF	0	0	0	1	1	1	1	1	1	1	1

## Relative GHG Emissions

	1990	2000	2005	2010	2015	2020		2025		2030	
Total excl. LULUCF						low	high	low	high	low	high
Relative 1990	100%	116%	113%	145%	160%	148%	142%	159%	146%	169%	151%
Relative 2000	86%	100%	97%	125%	138%	128%	123%	137%	126%	146%	130%
Relative 2005	89%	103%	100%	128%	142%	132%	126%	141%	130%	150%	134%
Relative 2010	69%	80%	78%	100%	111%	103%	98%	110%	101%	117%	104%
Relative 2015	62%	72%	70%	90%	100%	93%	89%	99%	91%	106%	94%

## Per-Capita Emissions

	1990	2000	2005	2010	2015	2020		2025		2030	
Total excl. LULUCF						low	high	low	high	low	high
Population (Mio)	0	0	0	0	0	0	0	0	0	0	0
Per-Capita Emissions (tCO2eq/cap)	2.7	2.5	2.1	2.4	2.4	2.0	1.9	1.9	1.8	1.9	1.7
Relative 1990	100%	92%	79%	90%	89%	74%	71%	72%	66%	70%	62%
Relative 2000	109%	100%	86%	98%	97%	80%	77%	78%	72%	76%	68%
Relative 2005	127%	117%	100%	114%	113%	94%	90%	91%	84%	89%	79%
Relative 2010	112%	102%	88%	100%	99%	82%	79%	80%	74%	78%	70%
Relative 2015	113%	103%	89%	101%	100%	83%	80%	81%	75%	79%	70%

## Data Sources:

Cat1\_CO2 PRIMAPHIST17  
 Cat2367\_CO2 PRIMAPHIST17  
 Cat4\_CO2 PRIMAPHIST17  
 Cat5\_CO2 PRIMAPHIST17  
 Cat1\_CH4 PRIMAPHIST17  
 Cat2367\_CH4 PRIMAPHIST17  
 Cat4\_CH4 PRIMAPHIST17  
 Cat5\_CH4 PRIMAPHIST17  
 Cat1\_N2O PRIMAPHIST17  
 Cat2367\_N2O PRIMAPHIST17  
 Cat4\_N2O PRIMAPHIST17  
 Cat5\_N2O PRIMAPHIST17  
 Cat0\_HFCs PRIMAPHIST17  
 Cat0\_PFCs PRIMAPHIST17  
 Cat0\_SF6 PRIMAPHIST17  
 Population UN 2015 Population Projections MEDIUM  
 GDP IMF WEO 2015, PPP adjusted GDP, constant 2009 prices...  
 IPCC WG3 Scenario IMAGE | AMPERE2-550-FullTech-HST  
 PRIMAPHIST16 description: www.pik-potsdam.de/primap-live/primap-hist/  
 Gratefully acknowledged in particular: PRIMAP, CAIT, CDIAC, EDGAR, IPCC, IEA, UNEP Gap Team, AMPERE Team and comments on earlier versions, in particular by Giacomo Grassi. Errors and misjudgements are our own. Malte Meinshausen & Ryan Alexander; The "Fiji COP23" Edition was enabled through support via the BMUB project UM14 41 4060  
 This Factsheet is available at www.climatecollege.unimelb.edu.au/indc-factsheets. Check out as well: www.climateactiontracker.org, www.mitigation-contributions.org, cait.wri.org, infographics.pbl.nl/indc, live.primap.org, www.unep.org/climatechange/pledgepipeline, and our twitter feed @ClimateCollege  
 climatecollege.unimelb.edu.au  
 AUSTRALIAN-GERMAN CLIMATE & ENERGY COLLEGE

## Various 'fair' contributions for a global 'least-cost' 2°C path (total incl. LULUCF):

More info on [www.mitigation-contributions.org](http://www.mitigation-contributions.org)

2025 rel. 2010:		2030 rel. 2010:	
LEADER	#N/A	LEADER	#N/A
CDC	#N/A	CDC	#N/A
ECPC50	#N/A	ECPC50	#N/A
ECPC90	#N/A	ECPC90	#N/A
GDR	#N/A	GDR	#N/A
INDC HIGH	1%	INDC HIGH	5%
INDC LOW	10%	INDC LOW	17%

"Fair" contributions for a global 'least-cost' 2°C track:  
 LEADER Leader  
 CDC Common-but-diff. per-cap. convergence  
 ECPC50 Eq. cum. Per-capita since 1950  
 ECPC90 Eq. cum. Per-capita since 1990  
 GDR Greenhouse Development Rights  
 #N/A No available data