

Uruguay

Per-Capita Emissions in 2030 rel. 2015 (excl. LULUCF): **-23%**

INDC 2025

INDC 2030

2015 World Rank

2025 World Rank

2030 World Rank

Share of World Emissions excl. LULUCF (Rank):

0.1% #91

0.1% #106

0.1% #110

Per-Capita Emissions (tCO2eq/cap)

12.2t #27

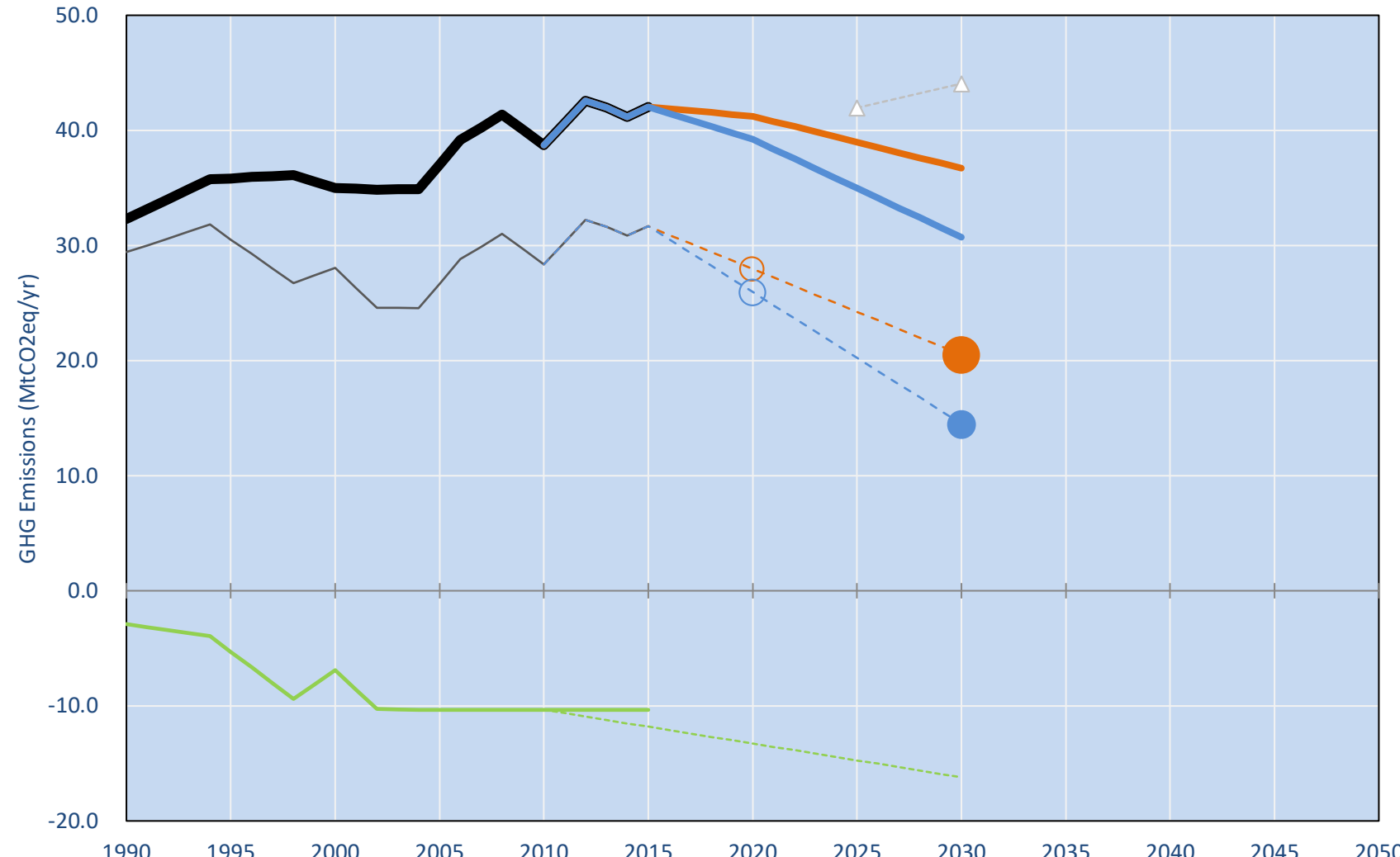
10.4t #30

9.4t #35

INDC: Sectoral intensity target covering all sectors Conditional target: achieve higher reduction pending on external sources. (GWP unclear)

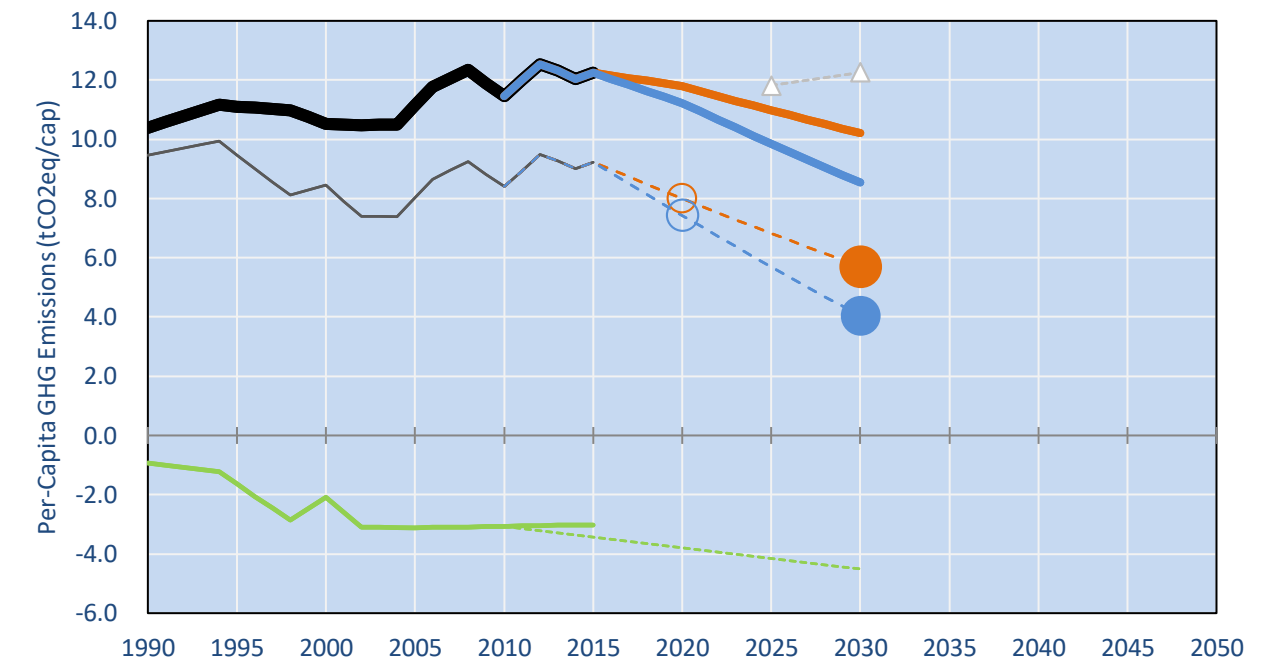
INDC Submitted: 29/09/2015

GHG Emissions

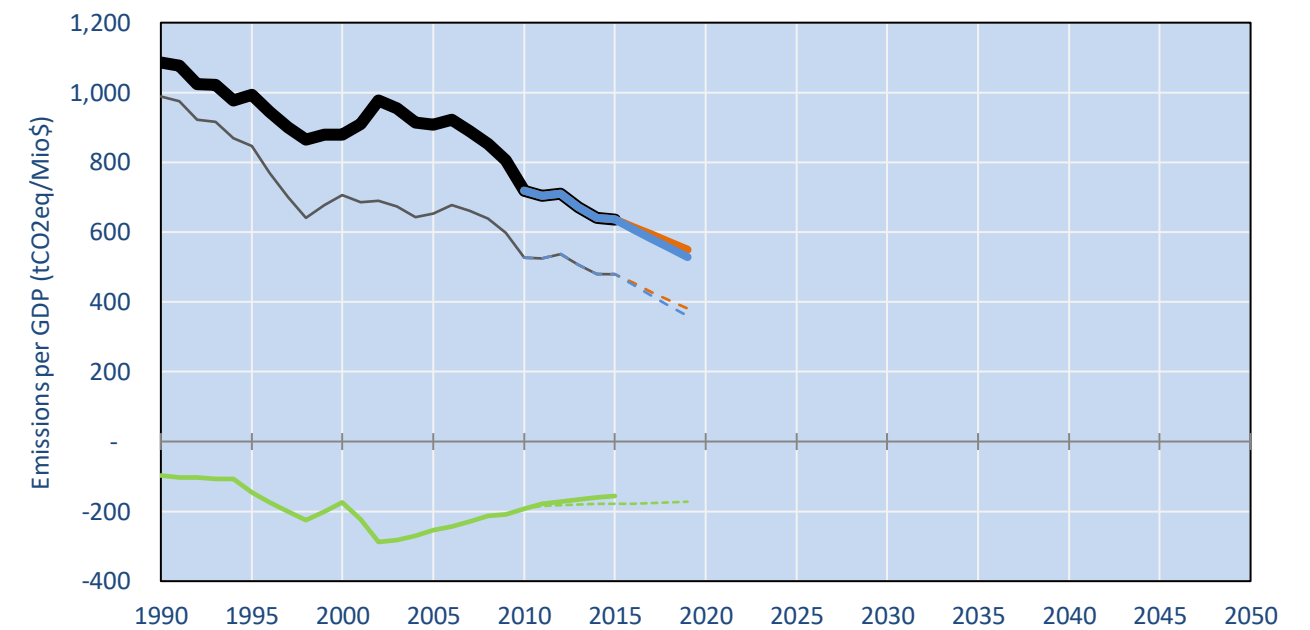


- Reference Total GHG excl. LULUCF
- Historical Covered Emissions, incl. LULUCF, if covered.
- LOW INDC Covered Emissions, incl. LULUCF if covered
- LOW INDC Covered + Non-Covered Emissions, excl. LULUCF
- HIGH INDC Covered Emissions, incl. LULUCF
- HIGH INDC Covered + Non-Covered Emissions, excl. LULUCF
- HIGH Cancun Pledges
- Reference LULUCF Emissions
- LOW INDC Levels
- LOW INDC Covered Emissions, excl. LULUCF
- HIGH INDC Levels
- HIGH INDC Covered Emissions, excl. LULUCF
- LOW Cancun Pledges
- WM LULUCF Projections
- Regional/Gas-specific BAU
- Not-covered GHG excl. LULUCF (Region Projection)

Per-Capita Emissions



GHG Emissions per GDP



2015 Total GHG Emissions excl. LULUCF

By Gas:

CO2	16.9%
CH4	55.1%
N2O	28.0%
F-gases	0.0%

By Sector:

Cat. 1 Energy	16.4%
Cat. 2, 3, 6 & 7	4.5%
Cat 4. Agriculture	79.1%
F-gases	0.0%

GHG Emissions

	1990	2000	2005	2010	2015	2020		2025		2030		
						low	high	low	high	low	high	
Assumed LULUCF Accounting Credits (-)/Debits (+)												
INDC covered LULUCF Emissions	-	3	-	7	-	10	-	13	-	13	-	15
INDC covered Emissions excl. LULUCF		32		35		37		39		39		35
Total GHG excl. LULUCF		32		35		37		39		39		35
Total GHG incl. LULUCF		29		28		27		28		26		24

Relative GHG Emissions

	1990	2000	2005	2010	2015	2020		2025		2030	
						low	high	low	high	low	high
Total excl. LULUCF											
Relative 1990	100%	108%	115%	120%	130%	128%	121%	121%	108%	114%	95%
Relative 2000	92%	100%	106%	111%	120%	118%	112%	111%	100%	105%	88%
Relative 2005	87%	94%	100%	104%	113%	111%	106%	105%	94%	99%	83%
Relative 2010	83%	90%	96%	100%	109%	107%	101%	101%	90%	95%	79%
Relative 2015	77%	83%	88%	92%	100%	98%	93%	93%	83%	87%	73%

Per-Capita Emissions

	1990	2000	2005	2010	2015	2020		2025		2030	
						low	high	low	high	low	high
Total excl. LULUCF											
Population (Mio)	3	3	3	3	3	3	3	4	4	4	4
Per-Capita Emissions (tCO2eq/cap)	10.4	10.5	11.1	11.5	12.2	11.8	11.2	11.0	9.9	10.2	8.5
Relative 1990	100%	101%	107%	110%	118%	114%	108%	106%	95%	98%	82%
Relative 2000	99%	100%	106%	109%	116%	112%	107%	104%	94%	97%	81%
Relative 2005	93%	95%	100%	103%	110%	106%	101%	99%	88%	92%	77%
Relative 2010	91%	92%	97%	100%	107%	103%	98%	96%	86%	89%	74%
Relative 2015	85%	86%	91%	94%	100%	96%	92%	90%	80%	83%	70%

Data Sources:

Cat1_CO2	PRIMAPHIST17	Cat5A1_CO2	UNFCCC CRF + Nat. Comms.
Cat2367_CO2	PRIMAPHIST17	Cat5A2_CO2	UNFCCC CRF + Nat. Comms.
Cat4_CO2	PRIMAPHIST17	Cat5LtoNonFL_CO2	UNFCCC CRF + Nat. Comms.
Cat5_CO2	PRIMAPHIST17	Cat5GMCMWMM_C	UNFCCC CRF
Cat1_CH4	PRIMAPHIST17	Cat5A1ForestFires	UNFCCC Cat5 + EDGAR(IPCC Database)
Cat2367_CH4	PRIMAPHIST17	Cat5A1HWP_CO2	UNFCCC CRF + Nat. Comms.
Cat4_CH4	PRIMAPHIST17	Cat5bisA_CO2	UNFCCC CRF + NATCOMM.
Cat5_CH4	PRIMAPHIST17	Cat5bisB_CO2	UNFCCC CRF + NATCOMM.
Cat1_N2O	PRIMAPHIST17	Cat5bisC_CO2	UNFCCC CRF + NATCOMM.
Cat2367_N2O	PRIMAPHIST17	Cat5bisD_CO2	UNFCCC CRF + NATCOMM.
Cat4_N2O	PRIMAPHIST17	Cat5bisE_CO2	UNFCCC CRF + NATCOMM.
Cat5_N2O	PRIMAPHIST17	PRO_WM_Cat5_G	COUNTRY-SPECIFIC USER DATA
Cat0_HFCs	PRIMAPHIST17	Metric	GWP AR5
Cat0_PFCs	PRIMAPHIST17		
Cat0_SF6	PRIMAPHIST17		
Population	UN 2015 Population Projections MEDIUM		
GDP	IMF WEO 2015, PPP adjusted GDP, constant 2009 prices...		
IPCC WG3 Scenario	IMAGE AMPERE2-550-FullTech-HST		
PRIMAPHIST16 description:	www.pik-potsdam.de/primap-live/primap-hist/		
Gratefully acknowledged in particular:	PRIMAP, CAIT, CDIAC, EDGAR, IPCC, IEA, UNEP GAP Team, AMPERE Team and comments on earlier versions, in particular by Giacomo Grassi. Errors and misjudgements are our own. Malte Meinshausen & Ryan Alexander; The "Fiji COP23" Edition was enabled through support via the BMUB project UM14 41 4060		
This Factsheet is available at	www.climatecollege.unimelb.edu.au/indc-factsheets. Check out as well: www.climateactiontracker.org, www.mitigation-contributions.org, cait.wri.org, infographics.pbl.nl/indc, live.primap.org, www.unep.org/climatechange/pledgepipeline, and our twitter feed @ClimateCollege		
		climatecollege.unimelb.edu.au	
		AUSTRALIAN-GERMAN CLIMATE & ENERGY COLLEGE	

Various 'fair' contributions for a global 'least-cost' 2°C path (total incl. LULUCF):

2025 rel. 2010:		2030 rel. 2010:	
LEADER	#N/A	LEADER	#N/A
CDC	-25%	CDC	-37%
ECPC50	-22%	ECPC50	-34%
ECPC90	-25%	ECPC90	-39%
GDR	-35%	GDR	-48%
INDC HIGH	-29%	INDC HIGH	-49%
INDC LOW	-15%	INDC LOW	-28%

More info on www.mitigation-contributions.org

Shown fair contributions only indicative
"Fair" contributions for a global 'least-cost' 2°C track:
LEADER Leader
CDC Common-but-diff. per-cap. convergence
ECPC50 Eq. cum. Per-capita since 1950
ECPC90 Eq. cum. Per-capita since 1990
GDR Greenhouse Development Rights
#N/A No available data