



Uncertain historical emissions. Unclear whether 20MtCO₂e emission level in 2010 refers to energy only or total emissions.

NDC Factsheet

Paris Agreement ratified on: 22/04/2016

Tuvalu

Per-Capita Emissions in 2030 rel. 2015 (excl. LULUCF):



-51%

NDC 2025

NDC 2030

2015 World Rank

2025 World Rank

2030 World Rank

-60% rel.2010

Share of World Emissions excl. LULUCF (Rank):

0.0% #197

0.0% #197

0.0% #197

Per-Capita Emissions (tCO₂e/cap)

2t #152

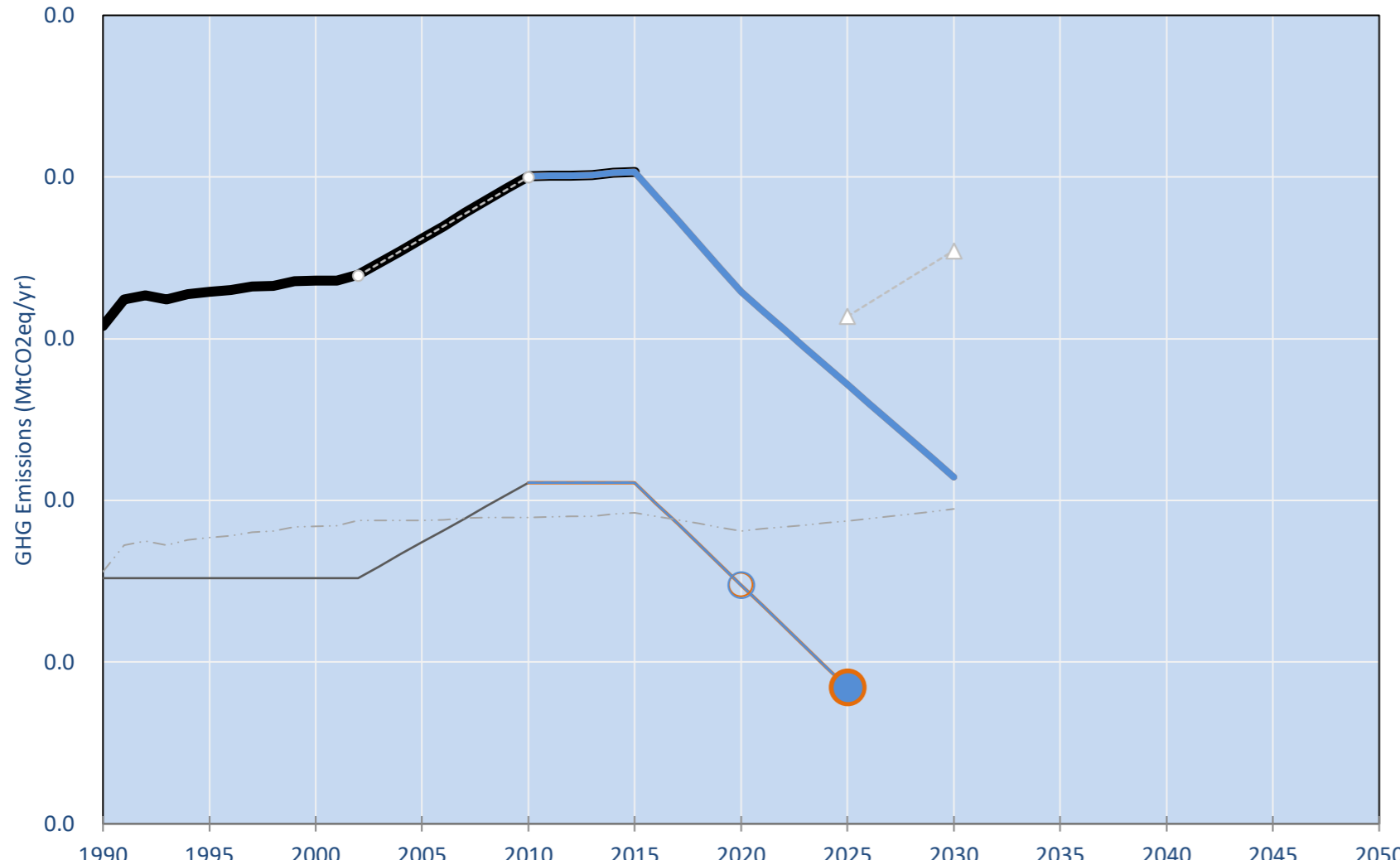
1.3t #175

1t #184

NDC: 60% reduction below 2010 emissions for energy sector. 100% renewable in electricity sector by 2025... (GWP AR4)

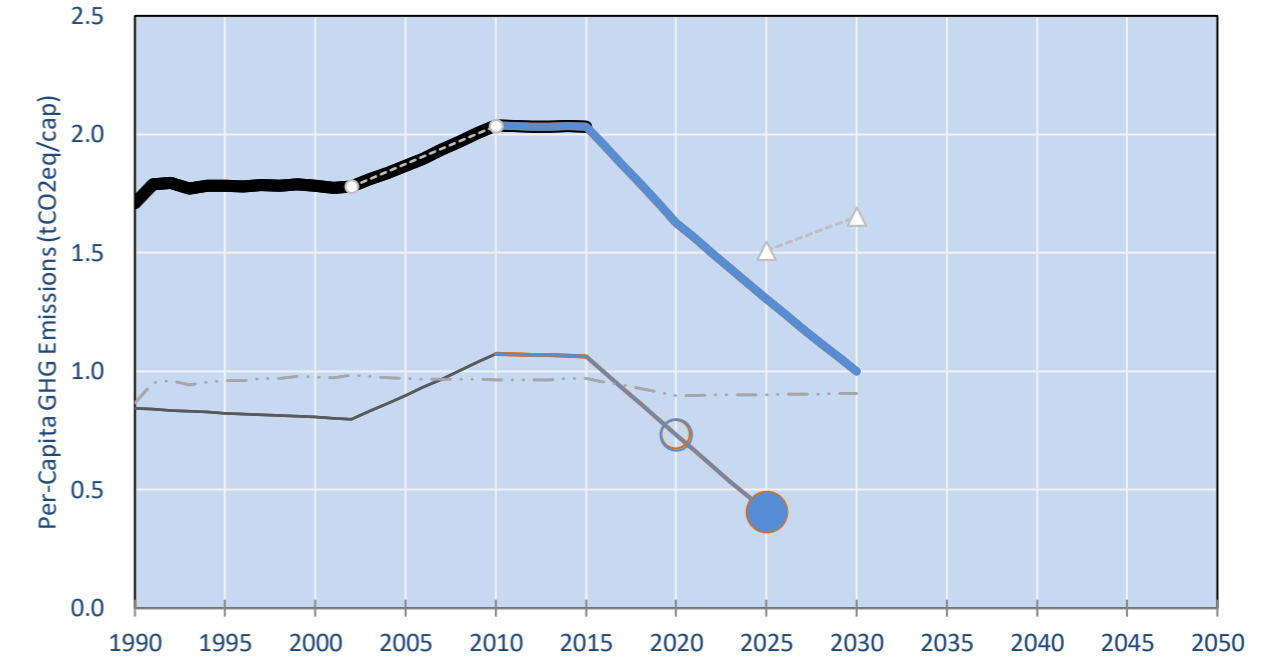
INDC Submitted: 27/11/2015

GHG Emissions

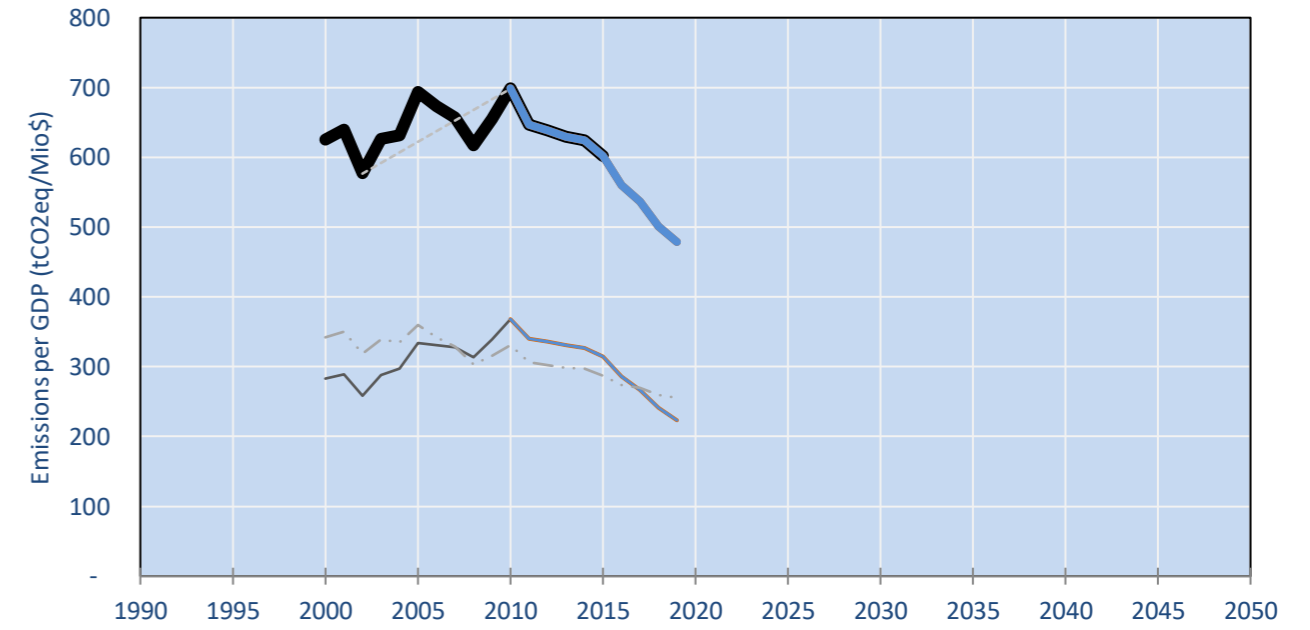


- Reference Total GHG excl. LULUCF
- Historical Covered Emissions, incl. LULUCF, if covered.
- LOW INDC Covered Emissions, incl. LULUCF if covered
- LOW INDC Covered + Non-Covered Emissions, excl. LULUCF
- HIGH INDC Covered Emissions, incl. LULUCF
- HIGH INDC Covered + Non-Covered Emissions, excl. LULUCF
- HIGH Cancun Pledges
- Reference LULUCF Emissions
- LOW INDC Levels
- LOW INDC Covered Emissions, excl. LULUCF
- HIGH INDC Levels
- HIGH INDC Covered Emissions, excl. LULUCF
- LOW Cancun Pledges
- Tuvalu INDC Total GHG
- Regional/Gas-specific BAU
- Not-covered GHG excl. LULUCF (Region Projection)

Per-Capita Emissions

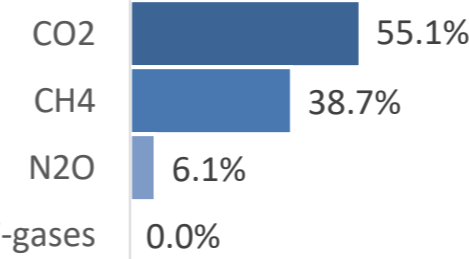


GHG Emissions per GDP

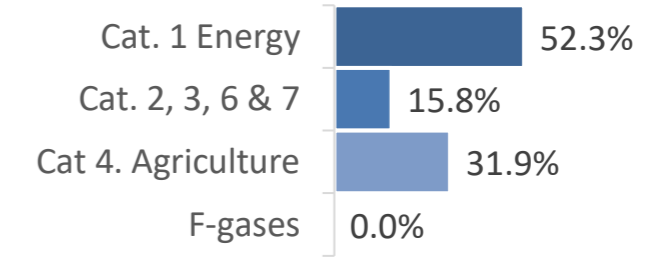


2015 Total GHG Emissions excl. LULUCF

By Gas:



By Sector:



GHG Emissions

	1990	2000	2005	2010	2015	2020		2025		2030	
(MtCO ₂ e/yr in GWP AR4)						low	high	low	high	low	high
Assumed LULUCF Accounting Credits (-)/Debits (+)											
NDC covered LULUCF Emissions											
NDC covered Emissions excl. LULUCF	0	0	0	0	0	0	0	0	0	0	0
Total GHG excl. LULUCF	0	0	0	0	0	0	0	0	0	0	0
Total GHG incl. LULUCF	0	0	0	0	0	0	0	0	0	0	0

Relative GHG Emissions

	1990	2000	2005	2010	2015	2020		2025		2030	
Total excl. LULUCF						low	high	low	high	low	high
Relative 1990	100%	109%	118%	130%	131%	107%	107%	88%	88%	70%	70%
Relative 2000	92%	100%	108%	119%	120%	98%	98%	81%	81%	64%	64%
Relative 2005	85%	93%	100%	111%	111%	91%	91%	75%	75%	59%	59%
Relative 2010	77%	84%	90%	100%	101%	82%	82%	68%	68%	54%	54%
Relative 2015	76%	83%	90%	99%	100%	82%	82%	67%	67%	53%	53%

Per-Capita Emissions

	1990	2000	2005	2010	2015	2020		2025		2030	
Total excl. LULUCF						low	high	low	high	low	high
Population (Mio)	0	0	0	0	0	0	0	0	0	0	0
Per-Capita Emissions (tCO ₂ e/cap)	1.7	1.8	1.9	2.0	2.0	1.6	1.6	1.3	1.3	1.0	1.0
Relative 1990	100%	104%	109%	119%	119%	95%	95%	76%	76%	58%	58%
Relative 2000	96%	100%	105%	114%	114%	91%	91%	73%	73%	56%	56%
Relative 2005	92%	96%	100%	109%	109%	87%	87%	70%	70%	54%	54%
Relative 2010	84%	87%	92%	100%	100%	80%	80%	64%	64%	49%	49%
Relative 2015	84%	88%	92%	100%	100%	80%	80%	64%	64%	49%	49%

Data Sources:

Category	Source	Category	Source
Cat1_CO2	COUNTRY-SPECIFIC USER DATA	Cat5A1_CO2	UNFCCC CRF + Nat. Comms.
Cat2367_CO2	PRIMAPHIST17	Cat5A2_CO2	UNFCCC CRF + Nat. Comms.
Cat4_CO2	PRIMAPHIST17	Cat5LtoNonFL_CO2	UNFCCC CRF + Nat. Comms.
Cat5_CO2	PRIMAPHIST17	Cat5GMCCMWM_C	UNFCCC CRF
Cat1_CH4	PRIMAPHIST17	Cat5A1ForestFires	UNFCCC CRF + EDGAR(IPCC Database)
Cat2367_CH4	PRIMAPHIST17	Cat5A1HWP_CO2	UNFCCC CRF + Nat. Comms.
Cat4_CH4	PRIMAPHIST17	Cat5bisA_CO2	UNFCCC CRF + NATCOMM.
Cat5_CH4	PRIMAPHIST17	Cat5bisB_CO2	UNFCCC CRF + NATCOMM.
Cat1_N2O	PRIMAPHIST17	Cat5bisC_CO2	UNFCCC CRF + NATCOMM.
Cat2367_N2O	PRIMAPHIST17	Cat5bisD_CO2	UNFCCC CRF + NATCOMM.
Cat4_N2O	PRIMAPHIST17	Cat5bisE_CO2	UNFCCC CRF + NATCOMM.
Cat5_N2O	PRIMAPHIST17	PRO_WM_Cat5_G	UNFCCC Annex I Reports
Cat0_HFCs	PRIMAPHIST17	Metric	GWP AR4
Cat0_PFCs	PRIMAPHIST17		
Cat0_SF6	PRIMAPHIST17		
Population	UN 2015 Population Projections MEDIUM		
GDP	IMF WEO 2015, PPP adjusted GDP, constant 2009 prices...		
	IPCC WG3 Scenario IMAGE AMPERE2-550-FullTech-HST		
	PRIMAPHIST16 description: www.pik-potsdam.de/primap-live/primap-hist/		
	Gratefully acknowledged in particular: PRIMAP, CAIT, CDIAC, EDGAR, IPCC, IEA, UNEP Gap Team, AMPERE Team and comments on earlier versions, in particular by Giacomo Grassi. Errors and misjudgements are our own. Malte Meinshausen & Ryan Alexander; The "Fiji COP23" Edition was enabled through support via the BMUB project UM14 41 4060		

climatecollege.unimelb.edu.au



Various 'fair' contributions for a global 'least-cost' 2°C path (total incl. LULUCF):

2025 rel. 2010:	2030 rel. 2010:
LEADER	#N/A
CDC	#N/A
ECPC50	#N/A
ECPC90	#N/A
GDR	#N/A
INDC HIGH	-32%
INDC LOW	-32%

More info on www.mitigation-contributions.org

2025 rel. 2010:	2030 rel. 2010:
LEADER	#N/A
CDC	#N/A
ECPC50	#N/A
ECPC90	#N/A
GDR	#N/A
INDC HIGH	-46%
INDC LOW	-46%

"Fair" contributions for a global 'least-cost' 2°C track:

- LEADER Leader
- CDC Common-but-diff. per-cap. convergence
- ECPC50 Eq. cum. Per-capita since 1950
- ECPC90 Eq. cum. Per-capita since 1990
- GDR Greenhouse Development Rights
- #N/A No available data