

# Turkey

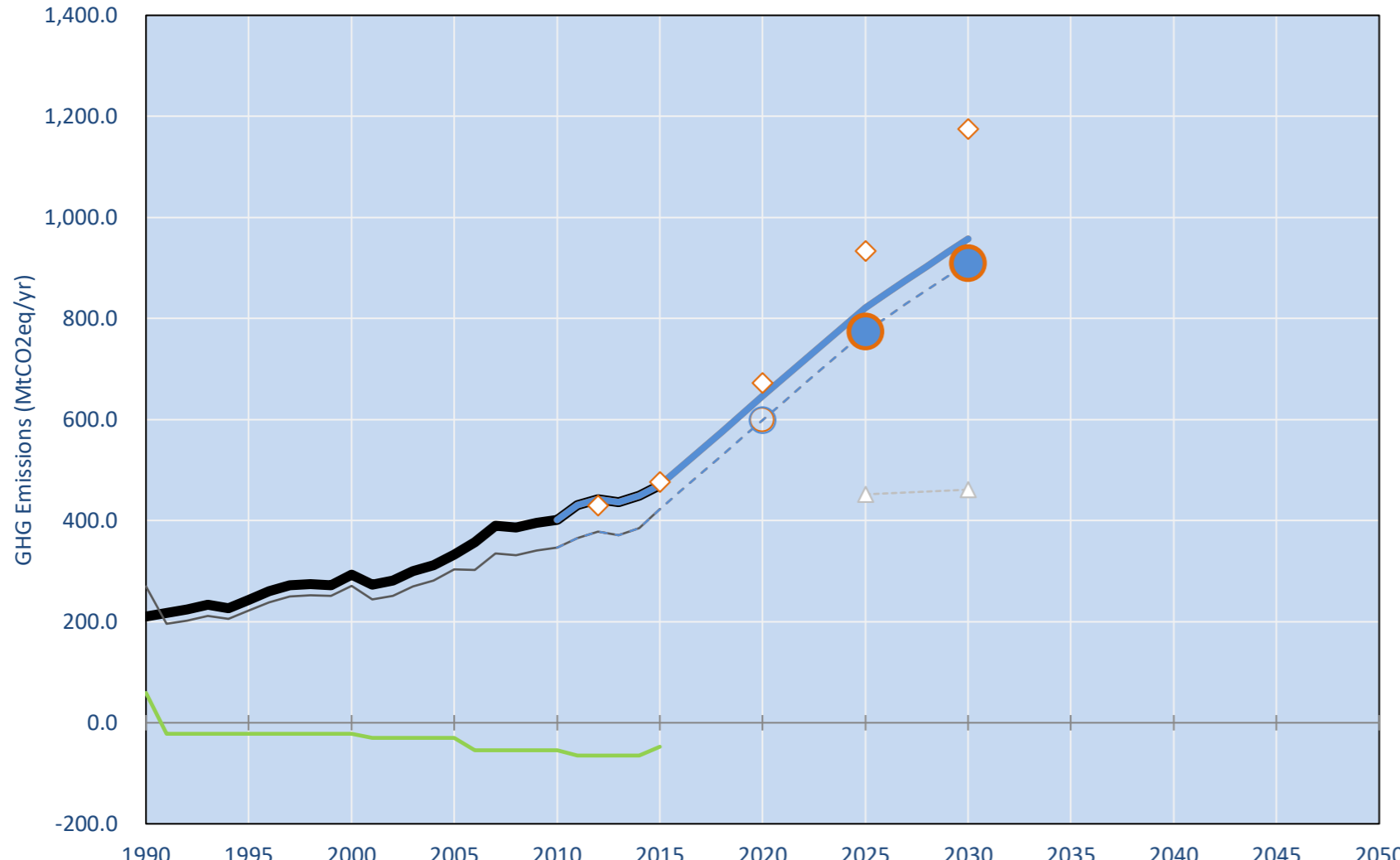
Per-Capita Emissions in 2030 rel. 2015 (excl. LULUCF): **+83%**

INDC 2025	INDC 2030	Share of World Emissions excl. LULUCF (Rank):	2015 World Rank	2025 World Rank	2030 World Rank
-15% rel. BAU of 934 Mt	-21% rel. BAU of 1175 Mt	1.0% #20	1.0% #20	1.6% #11	1.8% #11
Per-Capita Emissions (tCO <sub>2</sub> eq/cap)			6t #74	9.7t #30	10.9t #24

INDC: Reduction of up to 21% of GHG emissions from BAU by 2030. (GWP AR4)

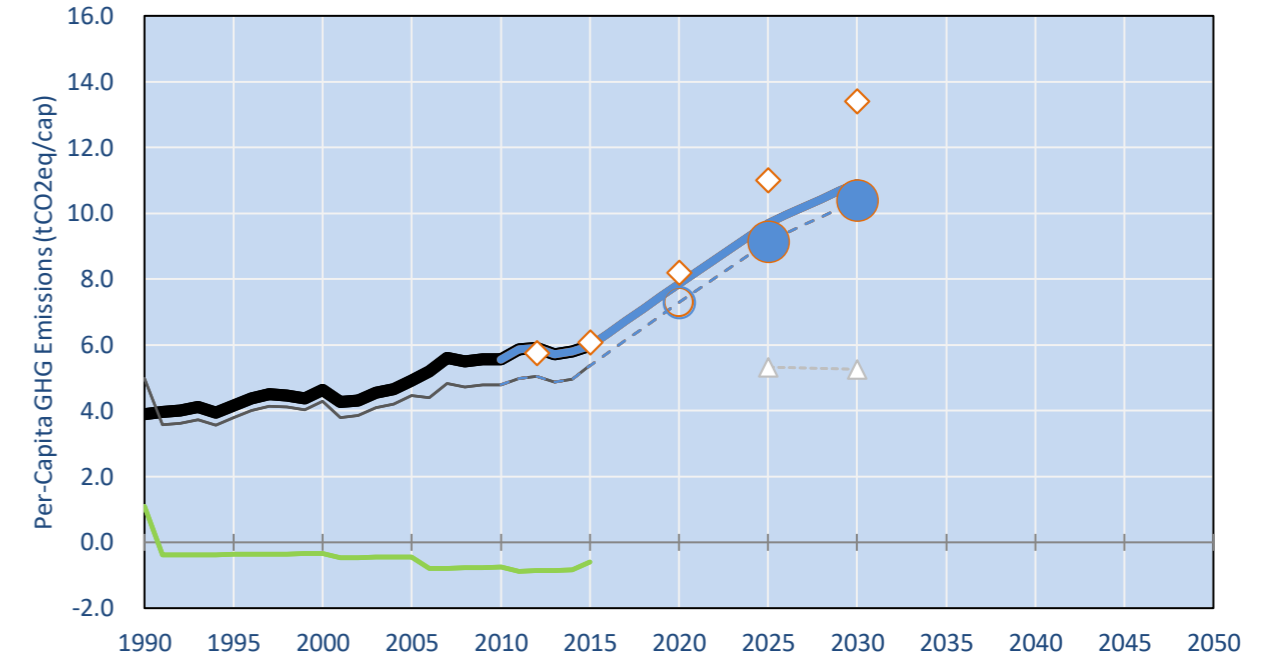
INDC Submitted: 30/09/2015

## GHG Emissions

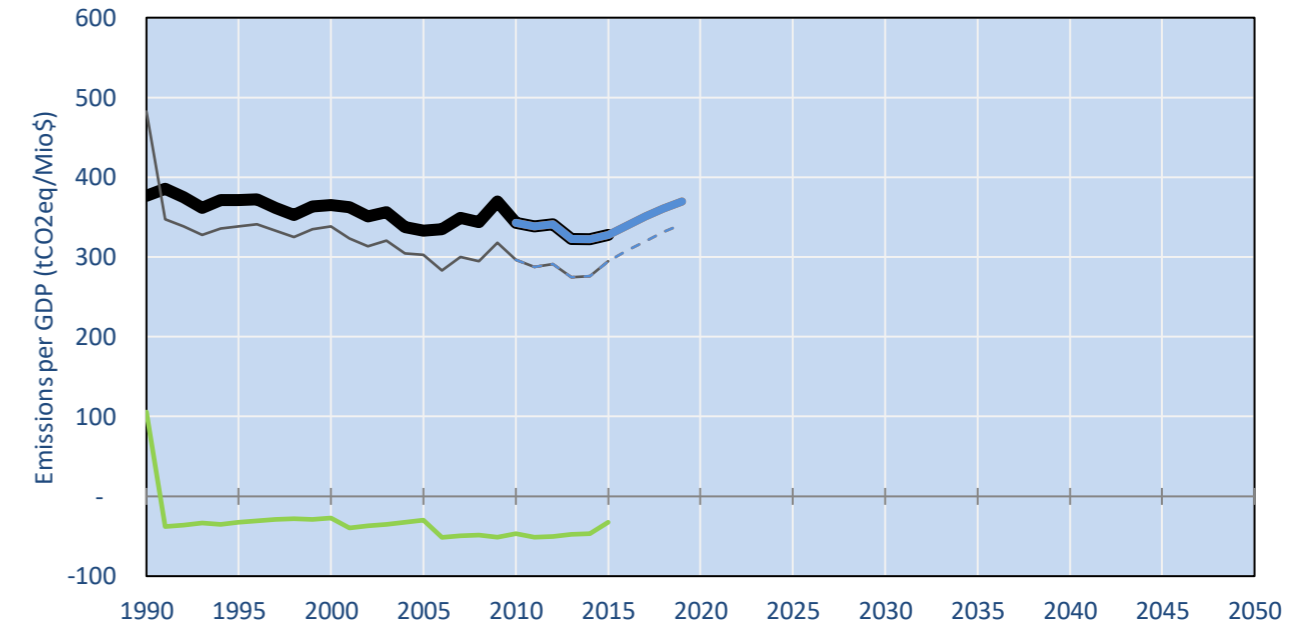


- Reference Total GHG excl. LULUCF
- Historical Covered Emissions, incl. LULUCF, if covered.
- LOW INDC Covered Emissions, incl. LULUCF if covered
- LOW INDC Covered + Non-Covered Emissions, excl. LULUCF
- HIGH INDC Covered Emissions, incl. LULUCF
- HIGH INDC Covered + Non-Covered Emissions, excl. LULUCF
- HIGH Cancun Pledges
- Reference LULUCF Emissions
- LOW INDC Levels
- LOW INDC Covered Emissions, excl. LULUCF
- HIGH INDC Levels
- HIGH INDC Covered Emissions, excl. LULUCF
- LOW Cancun Pledges
- Turkey INDC BAU
- Regional/Gas-specific BAU
- Not-covered GHG excl. LULUCF (Region Projection)

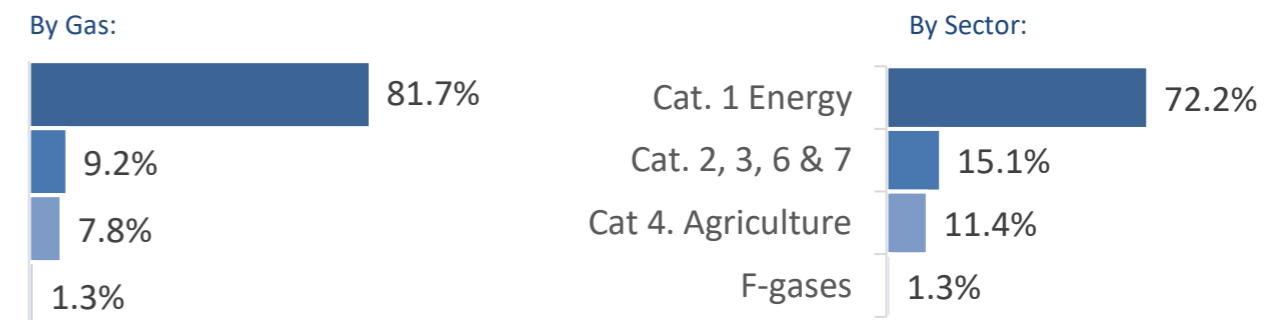
## Per-Capita Emissions



## GHG Emissions per GDP



## 2015 Total GHG Emissions excl. LULUCF



## GHG Emissions

	1990	2000	2005	2010	2015	2020		2025		2030	
						low	high	low	high	low	high
(MtCO <sub>2</sub> eq/yr in GWP SAR)											
Assumed LULUCF Accounting Credits (-)/Debits (+)											
INDC covered LULUCF Emissions	59	21	30	55	47	47	47	47	47	47	47
INDC covered Emissions excl. LULUCF	210	293	333	401	470	646	646	822	822	958	958
Total GHG excl. LULUCF	210	293	333	401	470	646	646	822	822	958	958
Total GHG incl. LULUCF	269	271	303	347	423	599	599	775	775	911	911

## Relative GHG Emissions

	1990	2000	2005	2010	2015	2020		2025		2030	
						low	high	low	high	low	high
Total excl. LULUCF											
Relative 1990	100%	139%	158%	191%	223%	307%	307%	391%	391%	455%	455%
Relative 2000	72%	100%	114%	137%	161%	221%	221%	281%	281%	327%	327%
Relative 2005	63%	88%	100%	121%	141%	194%	194%	247%	247%	288%	288%
Relative 2010	52%	73%	83%	100%	117%	161%	161%	205%	205%	239%	239%
Relative 2015	45%	62%	71%	85%	100%	137%	137%	175%	175%	204%	204%

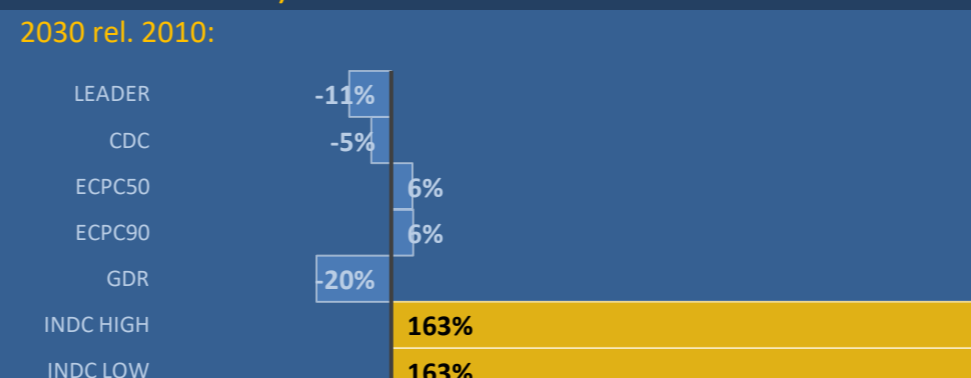
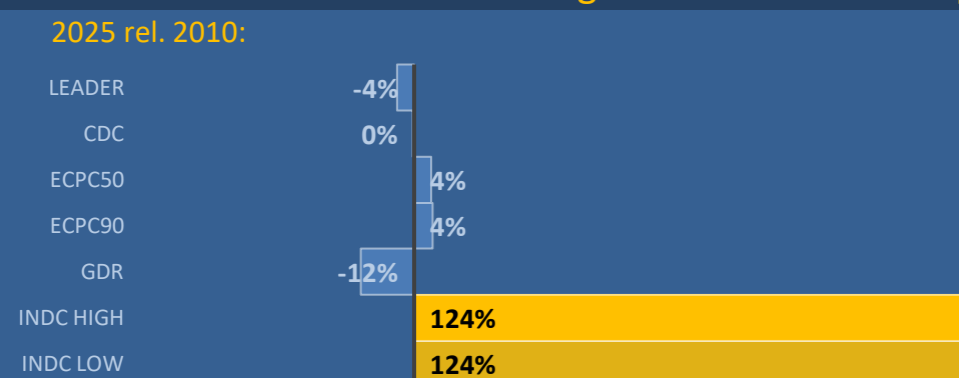
## Per-Capita Emissions

	1990	2000	2005	2010	2015	2020		2025		2030	
						low	high	low	high	low	high
Total excl. LULUCF											
Population (Mio)	54	63	68	72	79	82	82	85	85	88	88
Per-Capita Emissions (tCO <sub>2</sub> eq/cap)	3.9	4.6	4.9	5.6	6.0	7.9	7.9	9.7	9.7	10.9	10.9
Relative 1990	100%	119%	126%	143%	153%	202%	202%	249%	249%	280%	280%
Relative 2000	84%	100%	106%	120%	129%	170%	170%	209%	209%	236%	236%
Relative 2005	79%	94%	100%	113%	122%	160%	160%	197%	197%	222%	222%
Relative 2010	70%	83%	88%	100%	108%	141%	141%	174%	174%	197%	197%
Relative 2015	65%	77%	82%	93%	100%	131%	131%	162%	162%	183%	183%

## Data Sources:

Cat1_CO2	PRIMAPHIST17	Cat5A1_CO2	UNFCCC CRF + Nat. Comms.
Cat2367_CO2	PRIMAPHIST17	Cat5A2_CO2	UNFCCC CRF + Nat. Comms.
Cat4_CO2	PRIMAPHIST17	Cat5LtoNonFL_CO2	UNFCCC CRF + Nat. Comms.
Cat5_CO2	PRIMAPHIST17	Cat5GMCMWMM_C	UNFCCC CRF + Nat. Comms.
Cat1_CH4	PRIMAPHIST17	Cat5A1ForestFires	UNFCCC Cat5 + EDGAR(IPCC Database)
Cat2367_CH4	PRIMAPHIST17	Cat5A1HWP_CO2	UNFCCC CRF + Nat. Comms.
Cat4_CH4	PRIMAPHIST17	Cat5bisA_CO2	UNFCCC CRF + NATCOMM.
Cat5_CH4	PRIMAPHIST17	Cat5bisB_CO2	UNFCCC CRF + NATCOMM.
Cat1_N2O	PRIMAPHIST17	Cat5bisC_CO2	UNFCCC CRF + NATCOMM.
Cat2367_N2O	PRIMAPHIST17	Cat5bisD_CO2	UNFCCC CRF + NATCOMM.
Cat4_N2O	PRIMAPHIST17	Cat5bisE_CO2	UNFCCC CRF + NATCOMM.
Cat5_N2O	PRIMAPHIST17	PRO_WM_Cat5_G	UNFCCC Annex I Reports
Cat0_HFCs	PRIMAPHIST17	Metric	GWP SAR
Cat0_PFCs	PRIMAPHIST17		
Cat0_SF6	PRIMAPHIST17		
Population	UN 2015 Population Projections MEDIUM		
GDP	IMF WEO 2015, PPP adjusted GDP, constant 2009 prices...		
	IPCC WG3 Scenario IMAGE   AMPERE2-550-FullTech-HST		
	PRIMAPHIST16 description: www.pik-potsdam.de/primap-live/primap-hist/		
	Gratefully acknowledged in particular: PRIMAP, CAIT, CDIAC, EDGAR, IPCC, IEA, UNEP Gap Team, AMPERE Team and comments on earlier versions, in particular by Giacomo Grassi. Errors and misjudgements are our own. Malte Meinshausen & Ryan Alexander; The "Fiji COP23" Edition was enabled through support via the BMUB project UM14 41 4060		
	This Factsheet is available at www.climatecollege.unimelb.edu.au/indc-factsheets. Check out as well: www.climateactiontracker.org, www.mitigation-contributions.org, cait.wri.org, infographics.pbl.nl/indc, live.primap.org, www.unep.org/climatechange/pledgepipeline, and our twitter feed @ClimateCollege		
		climatecollege.unimelb.edu.au	
		AUSTRALIAN-GERMAN CLIMATE & ENERGY COLLEGE	

## Various 'fair' contributions for a global 'least-cost' 2°C path (total incl. LULUCF):



## More info on www.mitigation-contributions.org

### "Fair" contributions for a global 'least-cost' 2°C track:

LEADER	Leader
CDC	Common-but-diff. per-cap. convergence
ECPC50	Eq. cum. Per-capita since 1950
ECPC90	Eq. cum. Per-capita since 1990
GDR	Greenhouse Development Rights
INDC HIGH	#N/A
INDC LOW	No available data