

Turkey

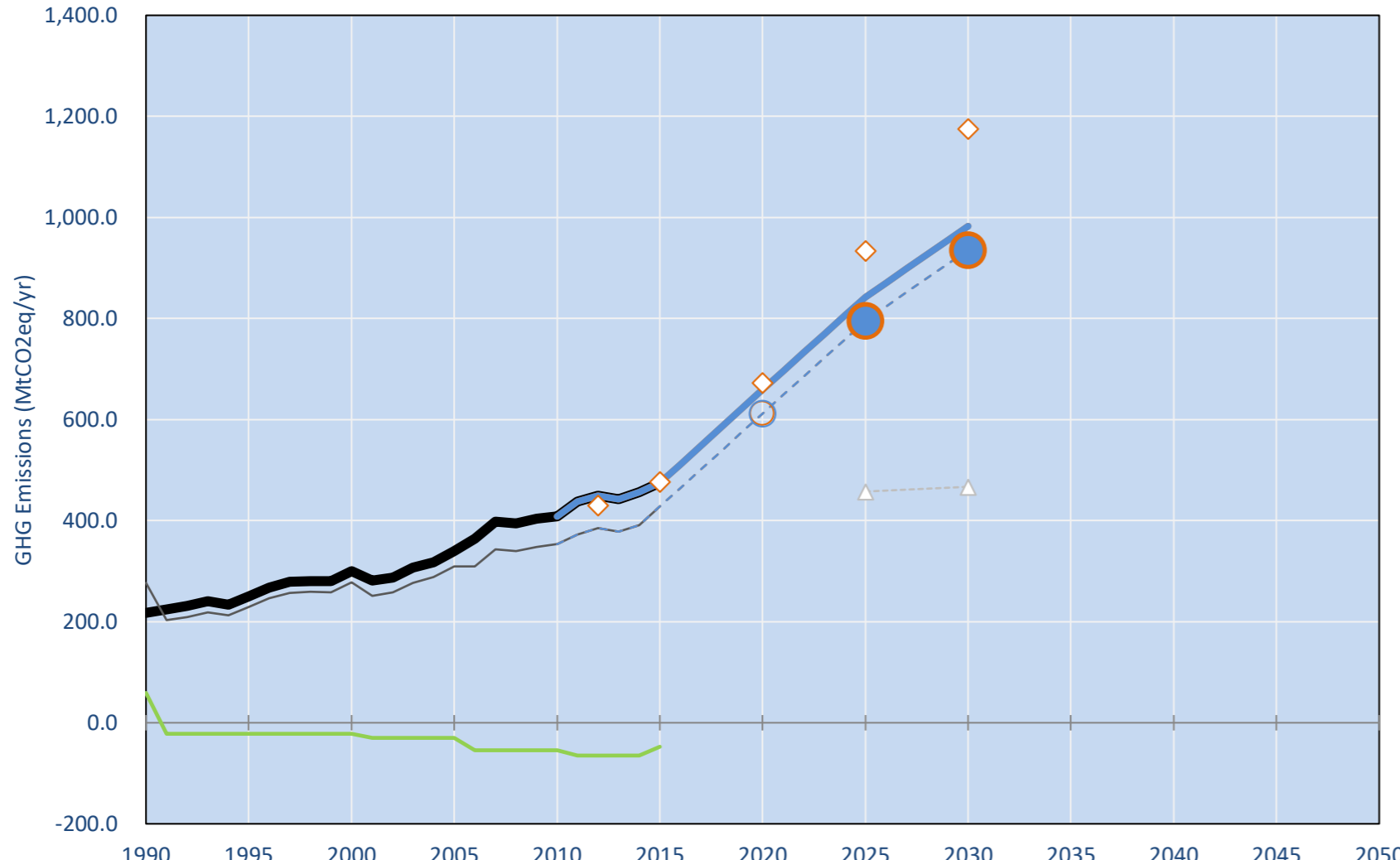
Per-Capita Emissions in 2030 rel. 2015 (excl. LULUCF): **+86%**

INDC 2025	INDC 2030	2015 World Rank	2025 World Rank	2030 World Rank
-15% rel. BAU of 934 Mt	-21% rel. BAU of 1175 Mt	1.0% #20	1.6% #11	1.8% #11
Share of World Emissions excl. LULUCF (Rank):		6t #69	9.9t #32	11.2t #25
Per-Capita Emissions (tCO2eq/cap)				

INDC: Reduction of up to 21% of GHG emissions from BAU by 2030. (GWP AR4)

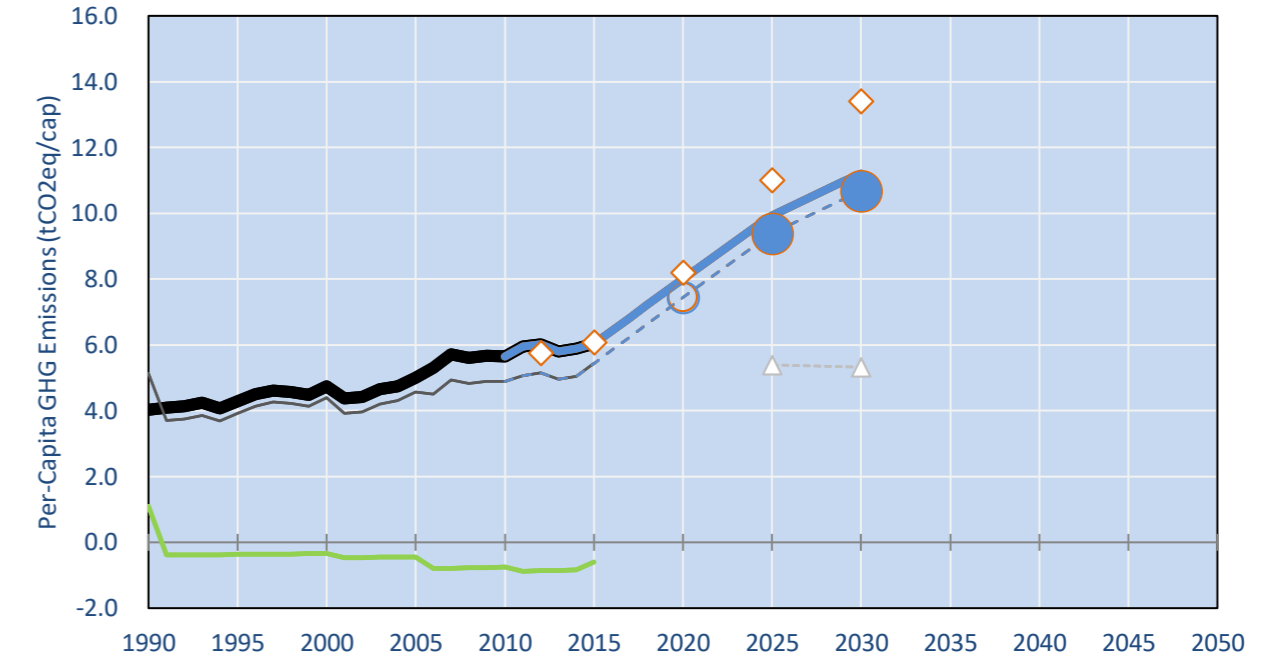
INDC Submitted: 30/09/2015

GHG Emissions

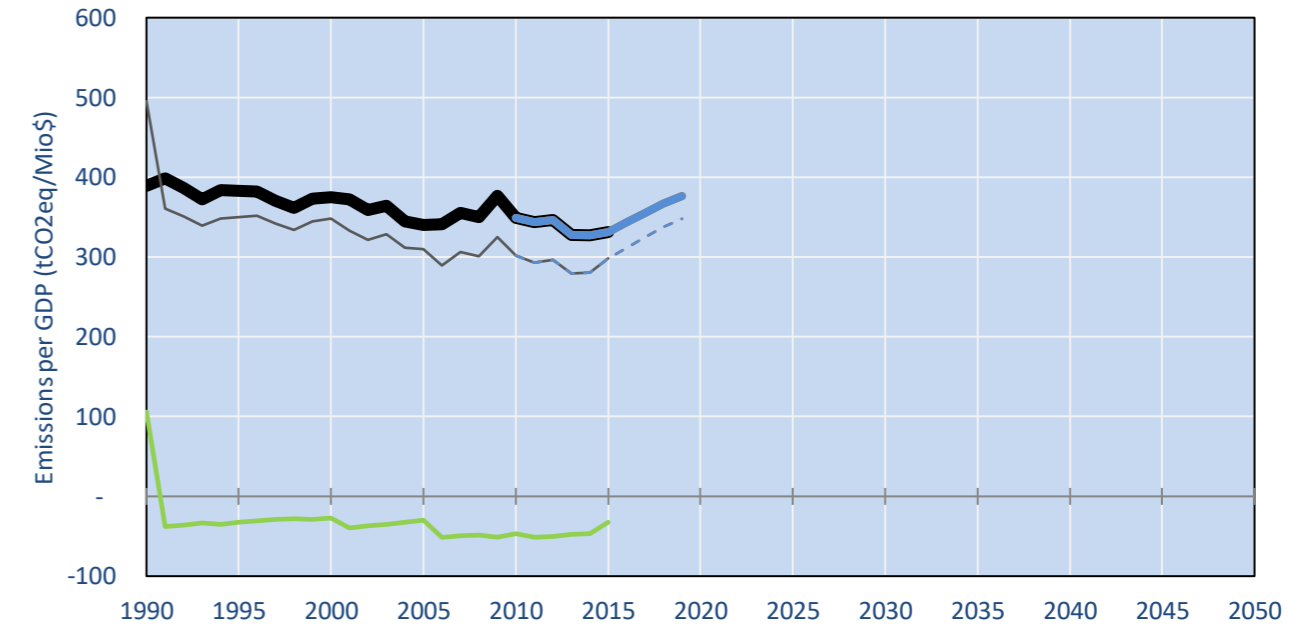


- Reference Total GHG excl. LULUCF
- Historical Covered Emissions, incl. LULUCF, if covered.
- LOW INDC Covered Emissions, incl. LULUCF if covered
- LOW INDC Covered + Non-Covered Emissions, excl. LULUCF
- HIGH INDC Covered Emissions, incl. LULUCF
- HIGH INDC Covered + Non-Covered Emissions, excl. LULUCF
- HIGH Cancun Pledges
- Reference LULUCF Emissions
- LOW INDC Levels
- LOW INDC Covered Emissions, excl. LULUCF
- HIGH INDC Levels
- HIGH INDC Covered Emissions, excl. LULUCF
- LOW Cancun Pledges
- Turkey INDC BAU
- Regional/Gas-specific BAU
- Not-covered GHG excl. LULUCF (Region Projection)

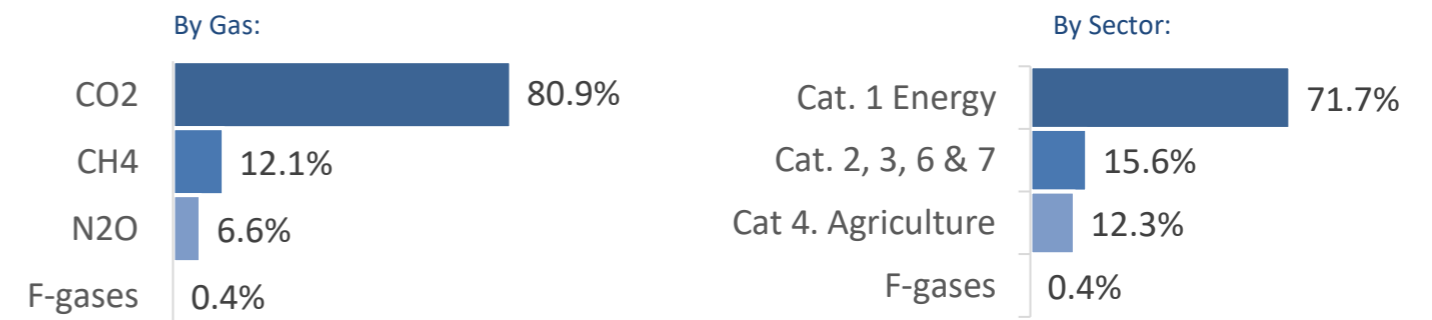
Per-Capita Emissions



GHG Emissions per GDP



2015 Total GHG Emissions excl. LULUCF



GHG Emissions

	1990	2000	2005	2010	2015	2020		2025		2030	
						low	high	low	high	low	high
Assumed LULUCF Accounting Credits (-)/Debits (+)											
INDC covered LULUCF Emissions	59	21	30	55	47	47	47	47	47	47	47
INDC covered Emissions excl. LULUCF	218	300	340	408	475	659	659	843	843	983	983
Total GHG excl. LULUCF	218	300	340	408	475	659	659	843	843	983	983
Total GHG incl. LULUCF	277	278	310	353	428	612	612	796	796	936	936

Relative GHG Emissions

	1990	2000	2005	2010	2015	2020		2025		2030	
						low	high	low	high	low	high
Total excl. LULUCF											
Relative 1990	100%	138%	156%	188%	218%	303%	303%	387%	387%	452%	452%
Relative 2000	73%	100%	113%	136%	158%	220%	220%	281%	281%	328%	328%
Relative 2005	64%	88%	100%	120%	140%	194%	194%	248%	248%	289%	289%
Relative 2010	53%	73%	83%	100%	116%	161%	161%	206%	206%	241%	241%
Relative 2015	46%	63%	72%	86%	100%	139%	139%	177%	177%	207%	207%

Per-Capita Emissions

	1990	2000	2005	2010	2015	2020		2025		2030	
						low	high	low	high	low	high
Total excl. LULUCF											
Population (Mio)	54	63	68	72	79	82	82	85	85	88	88
Per-Capita Emissions (tCO2eq/cap)	4.0	4.7	5.0	5.6	6.0	8.0	8.0	9.9	9.9	11.2	11.2
Relative 1990	100%	118%	124%	140%	150%	199%	199%	246%	246%	278%	278%
Relative 2000	85%	100%	106%	119%	127%	169%	169%	209%	209%	236%	236%
Relative 2005	80%	95%	100%	113%	121%	160%	160%	198%	198%	224%	224%
Relative 2010	71%	84%	89%	100%	107%	142%	142%	176%	176%	198%	198%
Relative 2015	67%	79%	83%	93%	100%	133%	133%	164%	164%	186%	186%

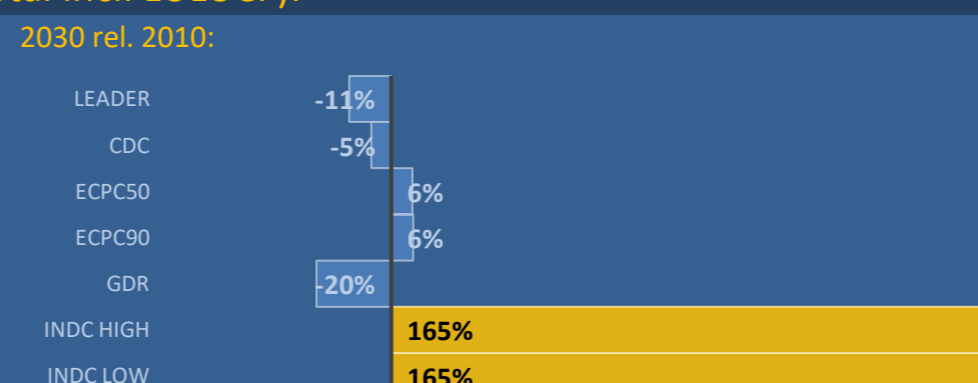
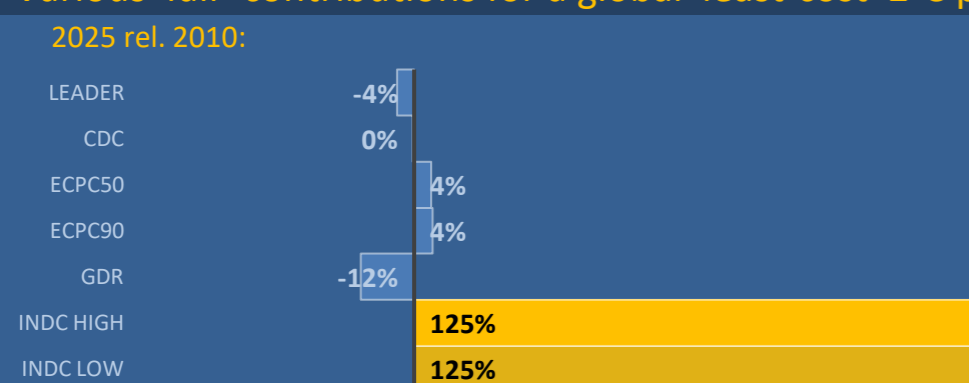
Data Sources:

Cat1_CO2	PRIMAPHIST17	Cat5A1_CO2	UNFCCC CRF + Nat. Comms.
Cat2367_CO2	PRIMAPHIST17	Cat5A2_CO2	UNFCCC CRF + Nat. Comms.
Cat4_CO2	PRIMAPHIST17	Cat5LtoNonFL_CO2	UNFCCC CRF + Nat. Comms.
Cat5_CO2	PRIMAPHIST17	Cat5GMCMWMM_C	UNFCCC CRF + Nat. Comms.
Cat1_CH4	PRIMAPHIST17	Cat5A1ForestFires	UNFCCC Cat5 + EDGAR(IPCC Database)
Cat2367_CH4	PRIMAPHIST17	Cat5A1HWP_CO2	UNFCCC CRF + Nat. Comms.
Cat4_CH4	PRIMAPHIST17	Cat5bisA_CO2	UNFCCC CRF + NATCOMM.
Cat5_CH4	PRIMAPHIST17	Cat5bisB_CO2	UNFCCC CRF + NATCOMM.
Cat1_N2O	PRIMAPHIST17	Cat5bisC_CO2	UNFCCC CRF + NATCOMM.
Cat2367_N2O	PRIMAPHIST17	Cat5bisD_CO2	UNFCCC CRF + NATCOMM.
Cat4_N2O	PRIMAPHIST17	Cat5bisE_CO2	UNFCCC CRF + NATCOMM.
Cat5_N2O	PRIMAPHIST17	PRO_WM_Cat5_G	UNFCCC Annex I Reports
Cat0_HFCs	PRIMAPHIST17	Metric	GWP AR5
Cat0_PFCs	PRIMAPHIST17		
Cat0_SF6	PRIMAPHIST17		
Population	UN 2015 Population Projections MEDIUM		
GDP	IMF WEO 2015, PPP adjusted GDP, constant 2009 prices...		
	IPCC WG3 Scenario IMAGE AMPERE2-550-FullTech-HST		
	PRIMAPHIST16 description: www.pik-potsdam.de/primap-live/primap-hist/		
	Gratefully acknowledged in particular: PRIMAP, CAIT, CDIAC, EDGAR, IPCC, IEA, UNEP Gap Team, AMPERE Team and comments on earlier versions, in particular by Giacomo Grassi. Errors and misjudgements are our own. Malte Meinshausen & Ryan Alexander; The "Fiji COP23" Edition was enabled through support via the BMUB project UM14 41 4060		
	This Factsheet is available at www.climatecollege.unimelb.edu.au/indc-factsheets. Check out as well: www.climateactiontracker.org, www.mitigation-contributions.org, cait.wri.org, infographics.pbl.nl/indc, live.primap.org, www.unep.org/climatechange/pledgepipeline, and our twitter feed @ClimateCollege		



Various 'fair' contributions for a global 'least-cost' 2°C path (total incl. LULUCF):

More info on www.mitigation-contributions.org



"Fair" contributions for a global 'least-cost' 2°C track:

- LEADER Leader
- CDC Common-but-diff. per-cap. convergence
- ECPC50 Eq. cum. Per-capita since 1950
- ECPC90 Eq. cum. Per-capita since 1990
- GDR Greenhouse Development Rights
- #N/A No available data