

Turkey

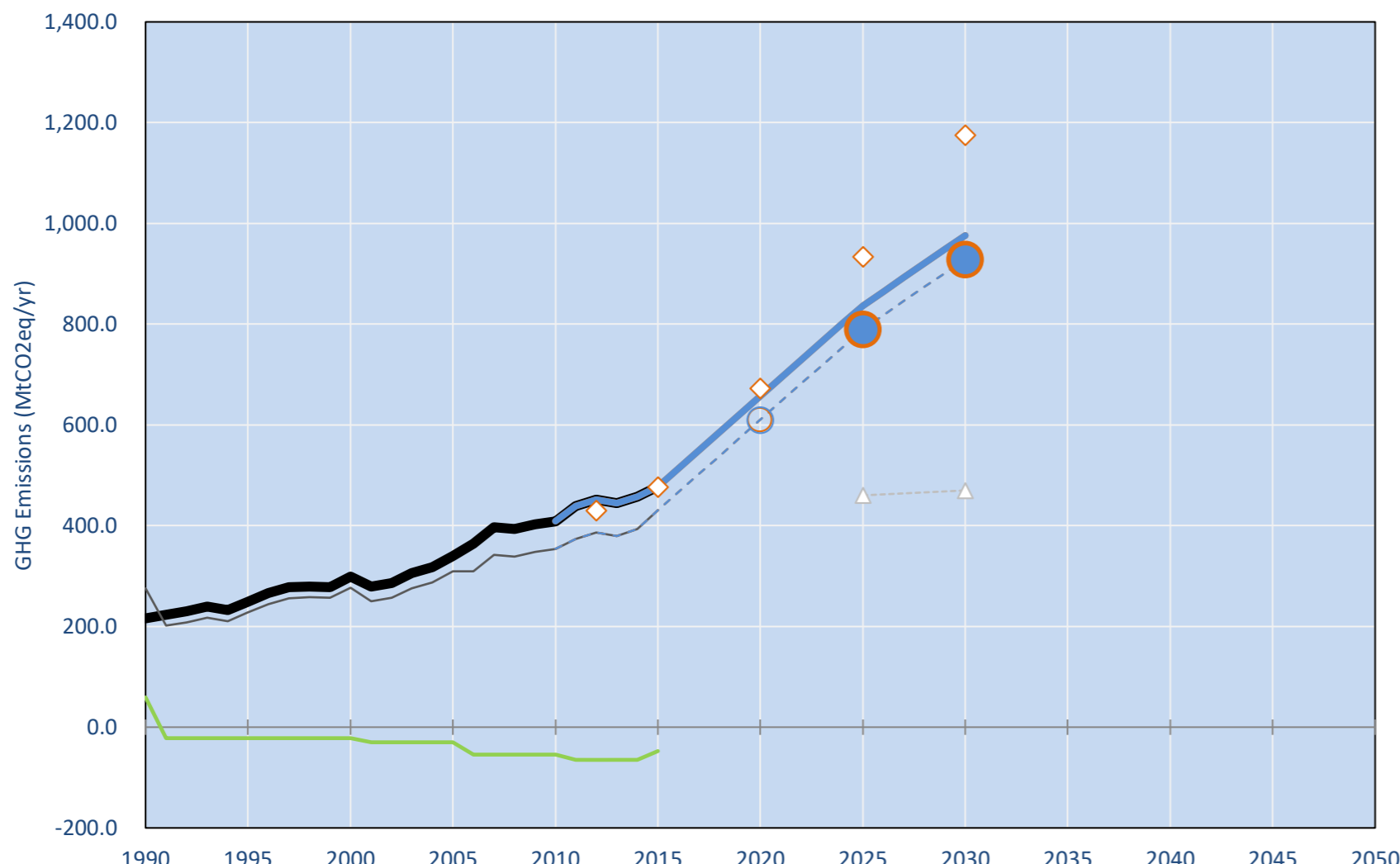
Per-Capita Emissions in 2030 rel. 2015 (excl. LULUCF): **+83%**

INDC 2025	INDC 2030	2015 World Rank	2025 World Rank	2030 World Rank
-15% rel. BAU of 934 Mt	-21% rel. BAU of 1175 Mt	1.0% #20	1.6% #11	1.8% #11
Share of World Emissions excl. LULUCF (Rank):		6.1t #74	9.9t #32	11.1t #25
Per-Capita Emissions (tCO ₂ eq/cap)				

INDC: Reduction of up to 21% of GHG emissions from BAU by 2030. (GWP AR4)

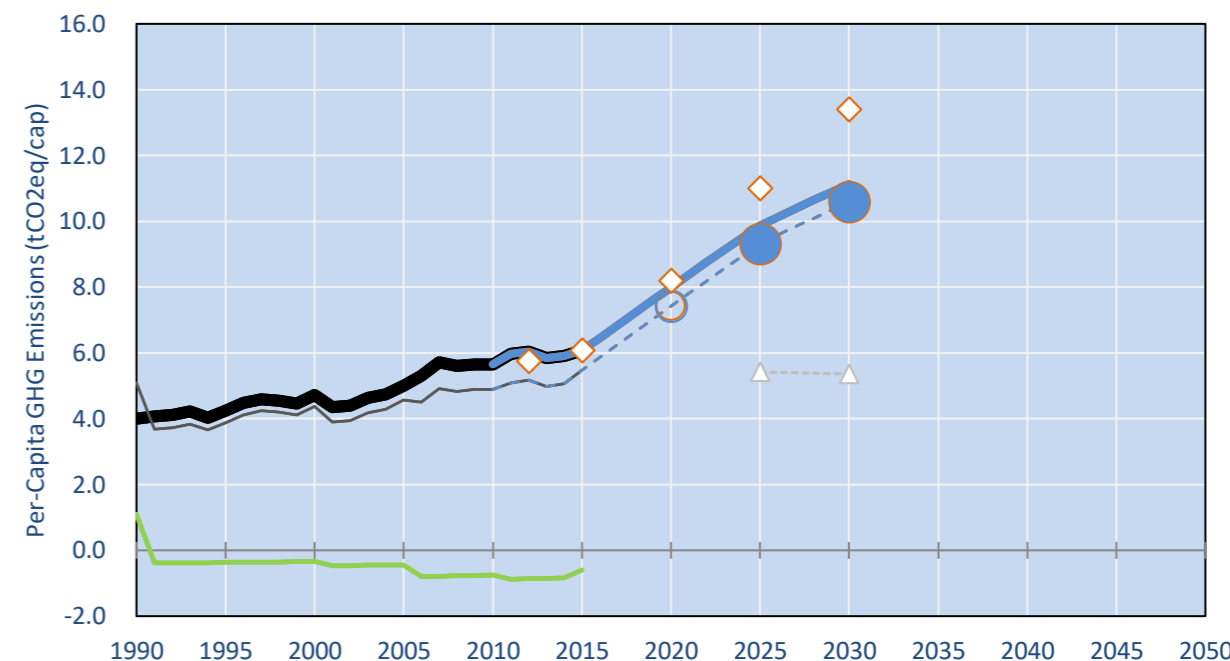
INDC Submitted: 30/09/2015

GHG Emissions

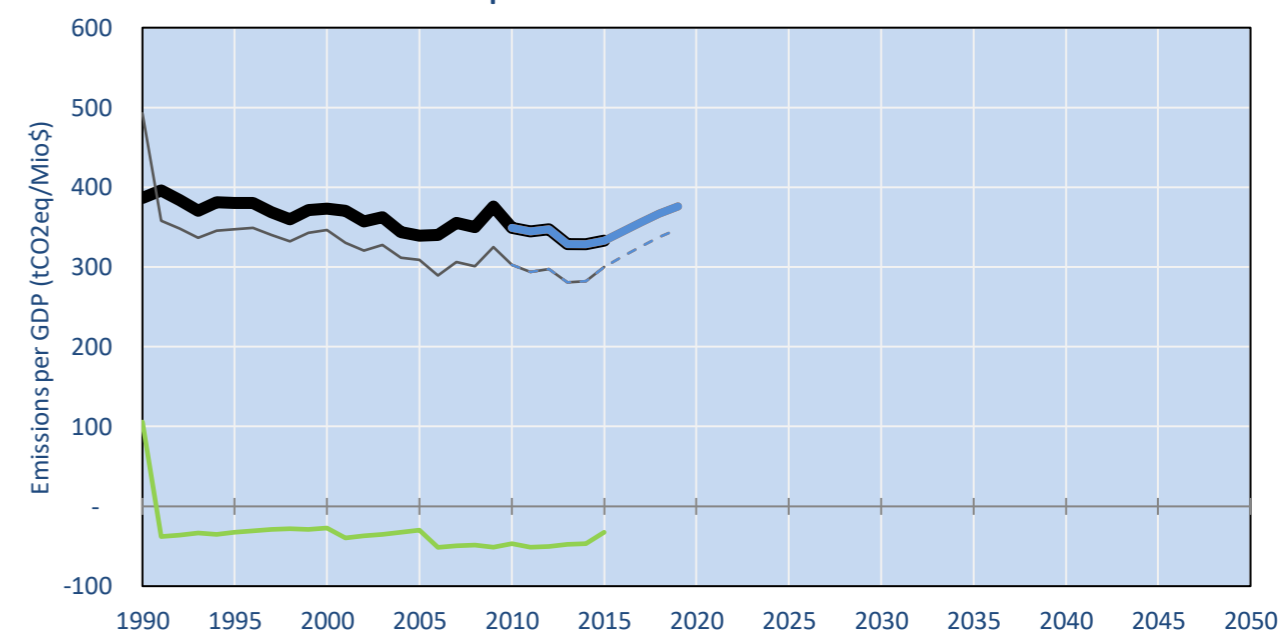


- Reference Total GHG excl. LULUCF
- Historical Covered Emissions, incl. LULUCF, if covered.
- LOW INDC Covered Emissions, incl. LULUCF if covered
- LOW INDC Covered + Non-Covered Emissions, excl. LULUCF
- HIGH INDC Covered Emissions, incl. LULUCF
- HIGH INDC Covered + Non-Covered Emissions, excl. LULUCF
- HIGH Cancun Pledges
- Reference LULUCF Emissions
- LOW INDC Levels
- LOW INDC Covered Emissions, excl. LULUCF
- HIGH INDC Levels
- HIGH INDC Covered Emissions, excl. LULUCF
- LOW Cancun Pledges
- Turkey INDC BAU
- Regional/Gas-specific BAU
- Not-covered GHG excl. LULUCF (Region Projection)

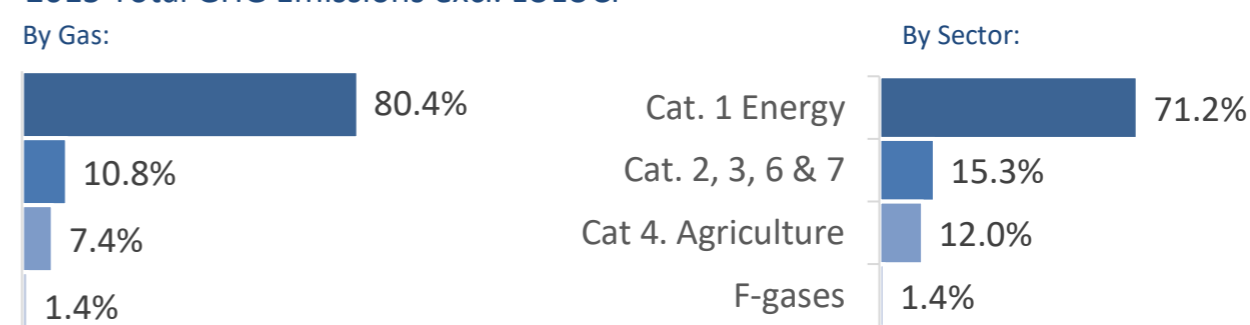
Per-Capita Emissions



GHG Emissions per GDP



2015 Total GHG Emissions excl. LULUCF



GHG Emissions

	1990	2000	2005	2010	2015	2020		2025		2030	
						low	high	low	high	low	high
Assumed LULUCF Accounting Credits (-)/Debits (+)											
INDC covered LULUCF Emissions	59	21	30	55	47	47	47	47	47	47	47
INDC covered Emissions excl. LULUCF	216	298	339	409	478	657	657	837	837	976	976
Total GHG excl. LULUCF	216	298	339	409	478	657	657	837	837	976	976
Total GHG incl. LULUCF	275	277	309	354	431	610	610	790	790	929	929

Relative GHG Emissions

	1990	2000	2005	2010	2015	2020		2025		2030	
						low	high	low	high	low	high
Total excl. LULUCF											
Relative 1990	100%	138%	157%	189%	221%	304%	304%	387%	387%	452%	452%
Relative 2000	72%	100%	114%	137%	160%	220%	220%	280%	280%	327%	327%
Relative 2005	64%	88%	100%	121%	141%	194%	194%	247%	247%	288%	288%
Relative 2010	53%	73%	83%	100%	117%	161%	161%	205%	205%	239%	239%
Relative 2015	45%	62%	71%	86%	100%	138%	138%	175%	175%	204%	204%

Per-Capita Emissions

	1990	2000	2005	2010	2015	2020		2025		2030	
						low	high	low	high	low	high
Total excl. LULUCF											
Population (Mio)	54	63	68	72	79	82	82	85	85	88	88
Per-Capita Emissions (tCO ₂ eq/cap)	4.0	4.7	5.0	5.7	6.1	8.0	8.0	9.9	9.9	11.1	11.1
Relative 1990	100%	118%	125%	141%	152%	200%	200%	247%	247%	278%	278%
Relative 2000	85%	100%	106%	120%	129%	169%	169%	209%	209%	236%	236%
Relative 2005	80%	94%	100%	113%	121%	160%	160%	197%	197%	223%	223%
Relative 2010	71%	83%	88%	100%	107%	141%	141%	174%	174%	197%	197%
Relative 2015	66%	78%	82%	93%	100%	132%	132%	162%	162%	183%	183%

Data Sources:

Cat1_CO2 PRIMAPHIST17
Cat2367_CO2 PRIMAPHIST17
Cat4_CO2 PRIMAPHIST17
Cat5_CO2 PRIMAPHIST17
Cat1_CH4 PRIMAPHIST17
Cat2367_CH4 PRIMAPHIST17
Cat4_CH4 PRIMAPHIST17
Cat5_CH4 PRIMAPHIST17
Cat1_N2O PRIMAPHIST17
Cat2367_N2O PRIMAPHIST17
Cat4_N2O PRIMAPHIST17
Cat5_N2O PRIMAPHIST17
Cat0_HFCs PRIMAPHIST17
Cat0_PFCs PRIMAPHIST17
Cat0_SF6 PRIMAPHIST17
Population UN 2015 Population Projections MEDIUM
GDP IMF WEO 2015, PPP adjusted GDP, constant 2009 prices...
IPCC WG3 Scenario IMAGE | AMPERE2-550-FullTech-HST
PRIMAPHIST16 description: www.pik-potsdam.de/primap-live/primap-hist/
Gratefully acknowledged in particular: PRIMAP, CAIT, CDIAC, EDGAR, IPCC, IEA, UNEP Gap Team, AMPERE Team and comments on earlier versions, in particular by Giacomo Grassi. Errors and misjudgements are our own. Malte Meinshausen & Ryan Alexander; The "Fiji COP23" Edition was enabled through support via the BMUB project UM14 41 4060
This Factsheet is available at www.climatecollege.unimelb.edu.au/indc-factsheets. Check out as well: www.climateactiontracker.org, www.mitigation-contributions.org, cait.wri.org, infographics.pbl.nl/indc, live.primap.org, www.unep.org/climatechange/pledgepipeline, and our twitter feed @ClimateCollege
climatecollege.unimelb.edu.au
AUSTRALIAN-GERMAN CLIMATE & ENERGY COLLEGE

Meinshausen, Alexander et al., www.climatecollege.unimelb.edu.au/indc-factsheets, The University of Melbourne



Various 'fair' contributions for a global 'least-cost' 2°C path (total incl. LULUCF):



More info on www.mitigation-contributions.org

"Fair" contributions for a global 'least-cost' 2°C track:

- LEADER Leader
- CDC Common-but-diff. per-cap. convergence
- ECPC50 Eq. cum. Per-capita since 1950
- ECPC90 Eq. cum. Per-capita since 1990
- GDR Greenhouse Development Rights
- #N/A No available data