

Per-Capita Emissions in 2030 rel. 2015 (excl. LULUCF): **-6%**

Sudan

NDC 2025

NDC 2030

2015 World Rank

2025 World Rank

2030 World Rank

0% rel. BAU of 59.9 Mt

Share of World Emissions excl. LULUCF (Rank):

0.2% #50

0.3% #46

0.3% #45

-6% rel. BAU of 59.9 Mt

Per-Capita Emissions (tCO2eq/cap)

2.8t #129

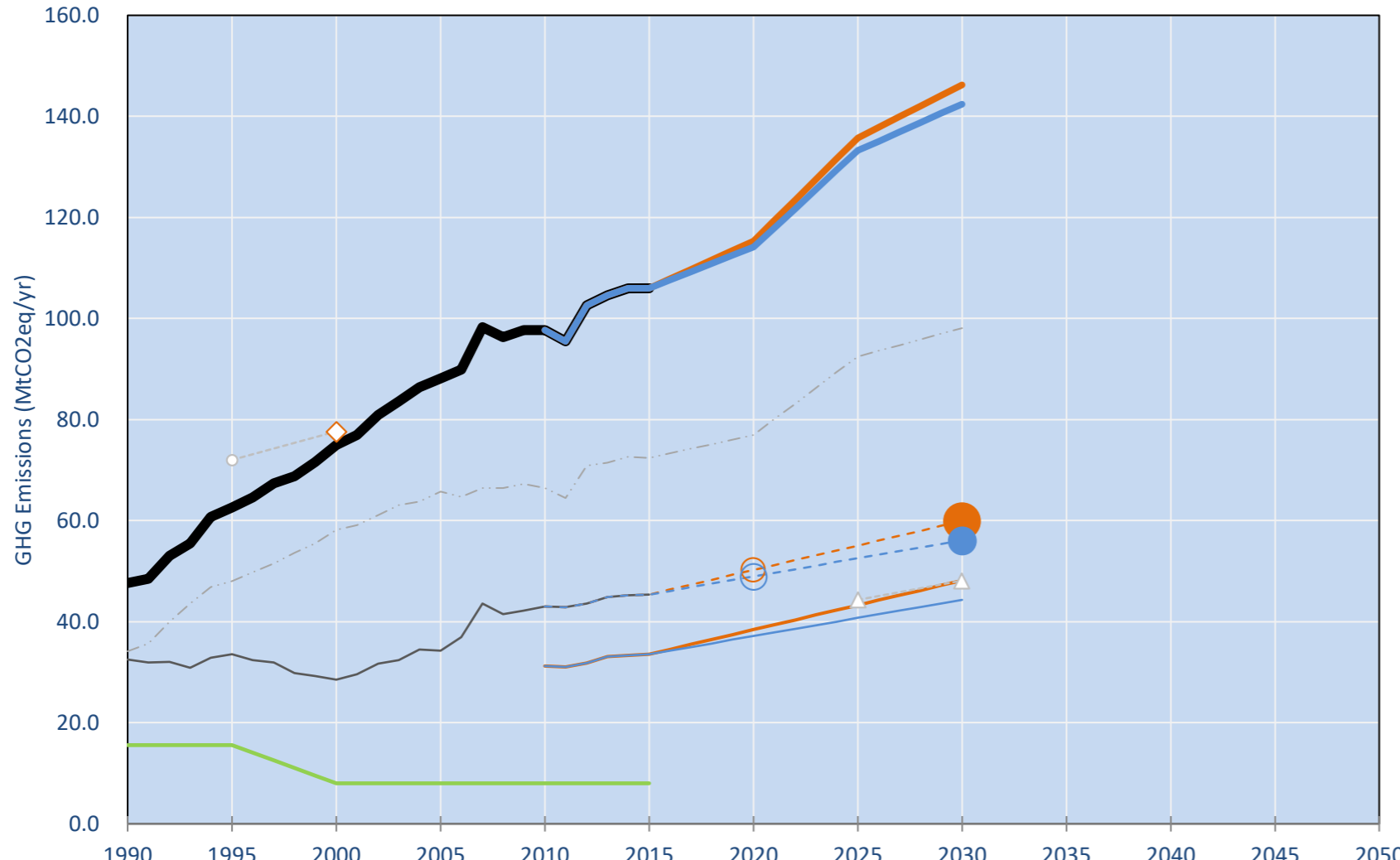
2.7t #130

2.6t #131

NDC: A number of policies and measures is proposed for energy, forestry and waste sector with timeframe 2025 to 2030. (GWP SAR)

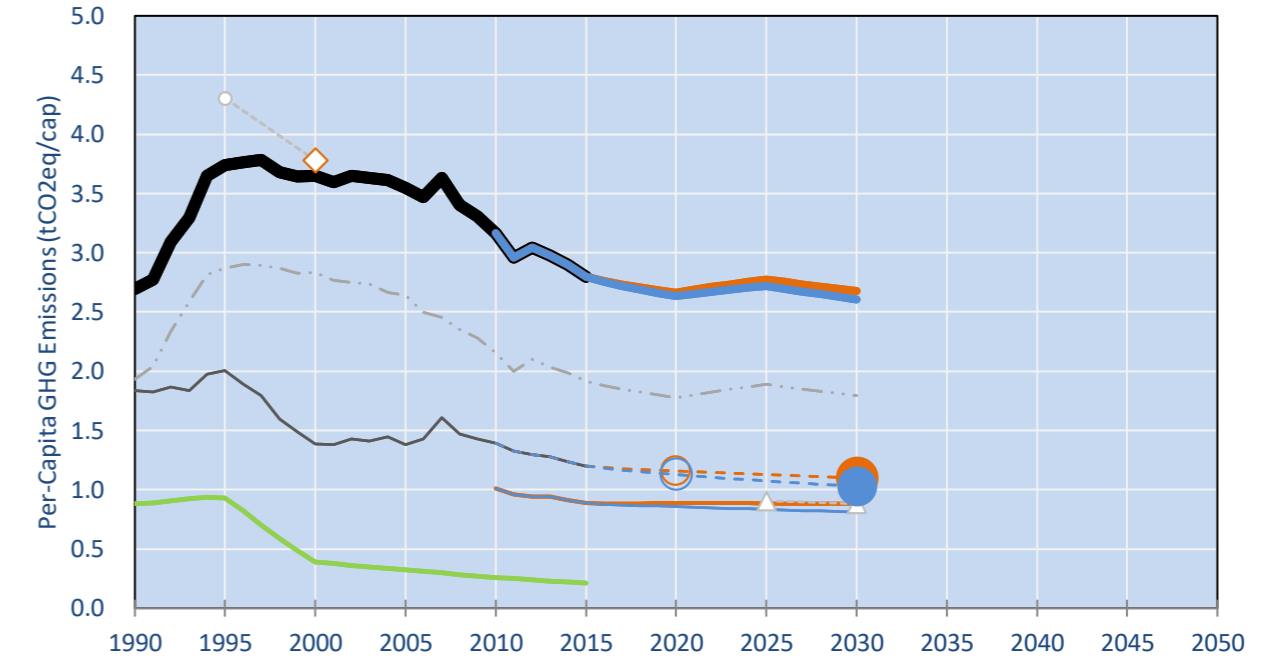
INDC Submitted: 10/11/2015

GHG Emissions

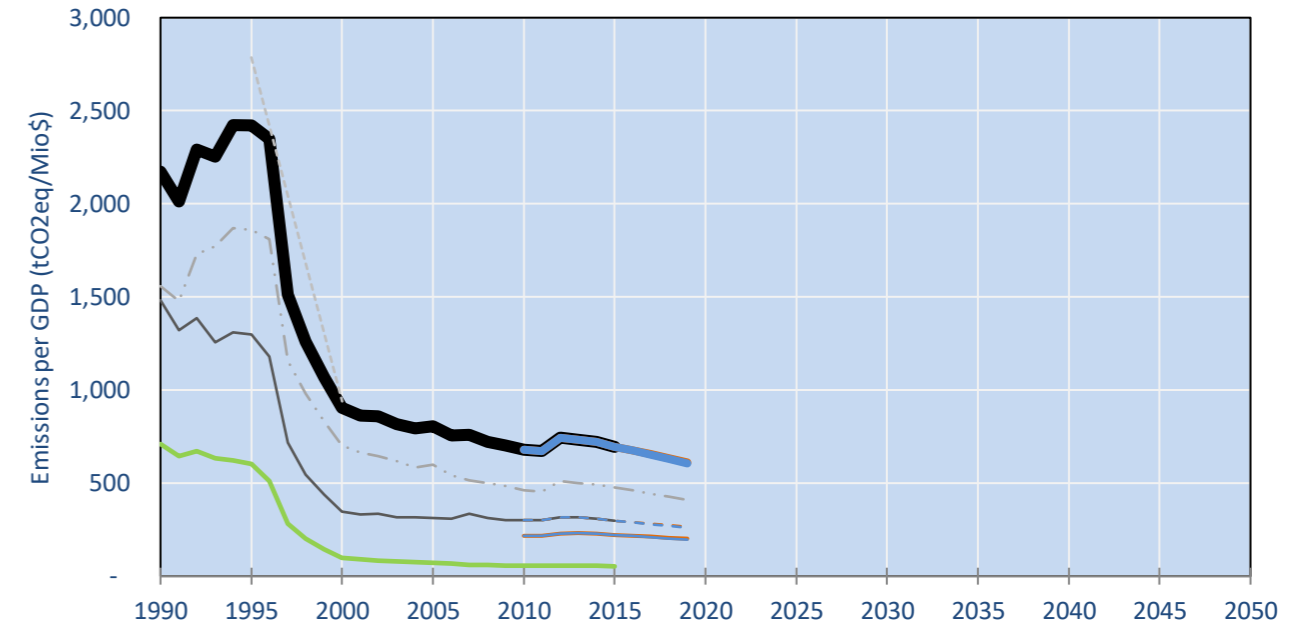


- Reference Total GHG excl. LULUCF
- Historical Covered Emissions, incl. LULUCF, if covered.
- LOW INDC Covered Emissions, incl. LULUCF if covered
- LOW INDC Covered + Non-Covered Emissions, excl. LULUCF
- HIGH INDC Covered Emissions, incl. LULUCF
- HIGH INDC Covered + Non-Covered Emissions, excl. LULUCF
- HIGH Cancun Pledges
- Reference LULUCF Emissions
- LOW INDC Levels
- LOW INDC Covered Emissions, excl. LULUCF
- HIGH INDC Levels
- HIGH INDC Covered Emissions, excl. LULUCF
- LOW Cancun Pledges
- Sudan hist. Emis. Total (GWP SAR) (1990=1995)
- Sudan hist. Emis (GWP SAR)
- Regional/Gas-specific BAU
- Not-covered GHG excl. LULUCF (Region Projection)

Per-Capita Emissions

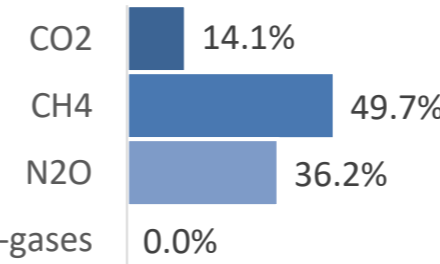


GHG Emissions per GDP

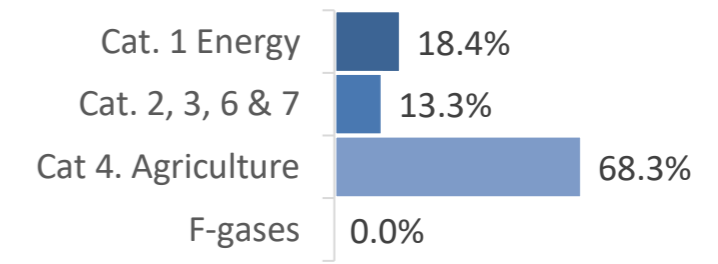


2015 Total GHG Emissions excl. LULUCF

By Gas:



By Sector:



GHG Emissions

| | 1990 | 2000 | 2005 | 2010 | 2015 | 2020 | 2025 | 2030 | |
|--|------|------|------|------|------|------|------|------|------|
| (MtCO2eq/yr in GWP SAR) | | | | | | low | high | low | high |
| Assumed LULUCF Accounting Credits (-)/Debits (+) | | | | | | | | | |
| NDC covered LULUCF Emissions | 19 | 12 | 12 | 12 | 12 | 12 | 12 | 12 | 12 |
| NDC covered Emissions excl. LULUCF | 14 | 17 | 22 | 31 | 34 | 38 | 43 | 41 | 48 |
| Total GHG excl. LULUCF | 48 | 75 | 88 | 98 | 106 | 115 | 136 | 133 | 146 |
| Total GHG incl. LULUCF | 63 | 83 | 96 | 106 | 114 | 123 | 144 | 141 | 154 |

Relative GHG Emissions

| | 1990 | 2000 | 2005 | 2010 | 2015 | 2020 | 2025 | 2030 | |
|--------------------|------|------|------|------|------|------|------|------|------|
| Total excl. LULUCF | | | | | | low | high | low | high |
| Relative 1990 | 100% | 157% | 185% | 205% | 222% | 242% | 239% | 285% | 280% |
| Relative 2000 | 64% | 100% | 118% | 130% | 141% | 154% | 152% | 181% | 178% |
| Relative 2005 | 54% | 85% | 100% | 111% | 120% | 131% | 129% | 154% | 151% |
| Relative 2010 | 49% | 77% | 90% | 100% | 108% | 118% | 117% | 139% | 136% |
| Relative 2015 | 45% | 71% | 83% | 92% | 100% | 109% | 108% | 128% | 126% |

Per-Capita Emissions

| | 1990 | 2000 | 2005 | 2010 | 2015 | 2020 | 2025 | 2030 | |
|-----------------------------------|------|------|------|------|------|------|------|------|------|
| Total excl. LULUCF | | | | | | low | high | low | high |
| Population (Mio) | 18 | 21 | 25 | 31 | 38 | 43 | 43 | 49 | 49 |
| Per-Capita Emissions (tCO2eq/cap) | 2.7 | 3.6 | 3.5 | 3.2 | 2.8 | 2.7 | 2.6 | 2.8 | 2.7 |
| Relative 1990 | 100% | 135% | 132% | 117% | 104% | 99% | 98% | 103% | 101% |
| Relative 2000 | 74% | 100% | 97% | 87% | 77% | 73% | 72% | 76% | 75% |
| Relative 2005 | 76% | 103% | 100% | 89% | 79% | 75% | 74% | 78% | 77% |
| Relative 2010 | 85% | 115% | 112% | 100% | 88% | 84% | 83% | 88% | 86% |
| Relative 2015 | 96% | 130% | 127% | 113% | 100% | 95% | 94% | 99% | 97% |

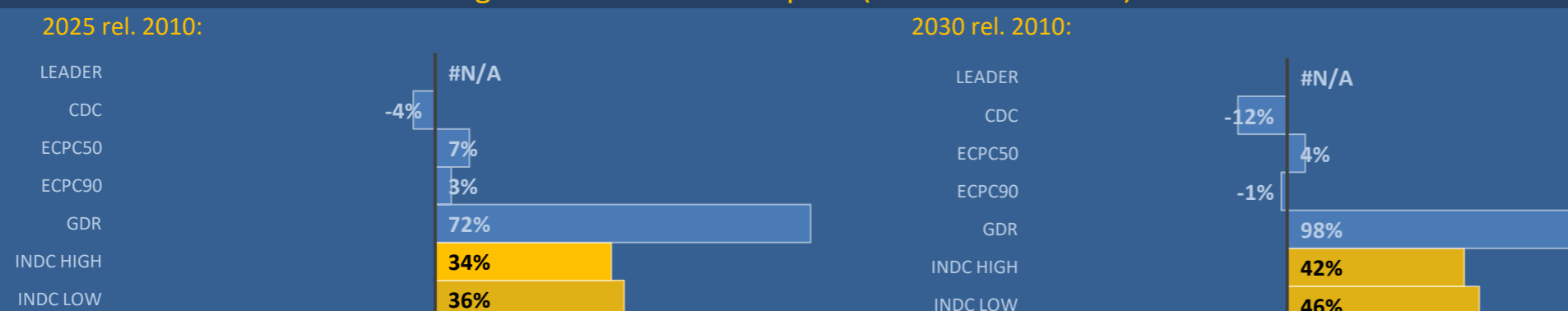
Data Sources:

| | | | |
|--|---|-------------------|------------------------------------|
| Cat1_CO2 | PRIMAPHIST17 | Cat5A1_CO2 | UNFCCC CRF + Nat. Comms. |
| Cat2367_CO2 | PRIMAPHIST17 | Cat5A2_CO2 | UNFCCC CRF + Nat. Comms. |
| Cat4_CO2 | PRIMAPHIST17 | Cat5LtoNonFL_CO2 | UNFCCC CRF + Nat. Comms. |
| Cat5_CO2 | PRIMAPHIST17 | Cat5GCMCMWM_C | UNFCCC CRF |
| Cat1_CH4 | PRIMAPHIST17 | Cat5A1ForestFires | UNFCCC Cat5 + EDGAR(IPCC Database) |
| Cat2367_CH4 | PRIMAPHIST17 | Cat5A1HWP_CO2 | UNFCCC CRF + Nat. Comms. |
| Cat4_CH4 | PRIMAPHIST17 | Cat5bisA_CO2 | UNFCCC CRF + NATCOMM. |
| Cat5_CH4 | PRIMAPHIST17 | Cat5bisB_CO2 | UNFCCC CRF + NATCOMM. |
| Cat1_N2O | PRIMAPHIST17 | Cat5bisC_CO2 | UNFCCC CRF + NATCOMM. |
| Cat2367_N2O | PRIMAPHIST17 | Cat5bisD_CO2 | UNFCCC CRF + NATCOMM. |
| Cat4_N2O | PRIMAPHIST17 | Cat5bisE_CO2 | UNFCCC CRF + NATCOMM. |
| Cat5_N2O | PRIMAPHIST17 | PRO_WM_Cat5_G | UNFCCC Annex I Reports |
| Cat0_HFCs | PRIMAPHIST17 | Metric | GWP SAR |
| Cat0_PFCs | PRIMAPHIST17 | | |
| Cat0_SF6 | PRIMAPHIST17 | | |
| Population | COUNTRY-SPECIFIC USER DATA | | |
| GDP | IMF WEO 2015, PPP adjusted GDP, constant 2009 prices... | | |
| IPCC WG3 Scenario | IMAGE AMPERE2-550-FullTech-HST | | |
| PRIMAPHIST16 description: | www.pik-potsdam.de/primap-live/primap-hist/ | | |
| Gratefully acknowledged in particular: | PRIMAP, CAIT, CDIAC, EDGAR, IPCC, IEA, UNEP Gap Team, AMPERE Team and comments on earlier versions, in particular by Giacomo Grassi. Errors and misjudgements are our own. Malte Meinshausen & Ryan Alexander; The "Fiji COP23" Edition was enabled through support via the BMUB project UM14 41 4060 | | |
| This Factsheet is available at | www.climatecollege.unimelb.edu.au/indc-factsheets. Check out as well: www.climateactiontracker.org, www.mitigation-contributions.org, cait.wri.org, infographics.pbl.nl/indc, live.primap.org, www.unep.org/climatechange/pledgepipeline, and our twitter feed @ClimateCollege | | |

climatecollege.unimelb.edu.au



Various 'fair' contributions for a global 'least-cost' 2°C path (total incl. LULUCF):



Shown fair contributions only indicative

"Fair" contributions for a global 'least-cost' 2°C track:

- LEADER Leader
- CDC Common-but-diff. per-cap. convergence
- ECPC50 Eq. cum. Per-capita since 1950
- ECPC90 Eq. cum. Per-capita since 1990
- GDR Greenhouse Development Rights
- #N/A No available data