

Shown: 2025 & 2030: Min/max of unconditional and conditional targets

Paris Agreement ratified on: 16/12/2016

# Slovenia

Per-Capita Emissions in 2030 rel. 2015 (excl. LULUCF): **-1%**

NDC 2025

NDC 2030

2015 World Rank

2025 World Rank

2030 World Rank

Share of World Emissions excl. LULUCF (Rank):

0.0% #125

0.0% #132

0.0% #135

Per-Capita Emissions (tCO2eq/cap)

8.1t #51

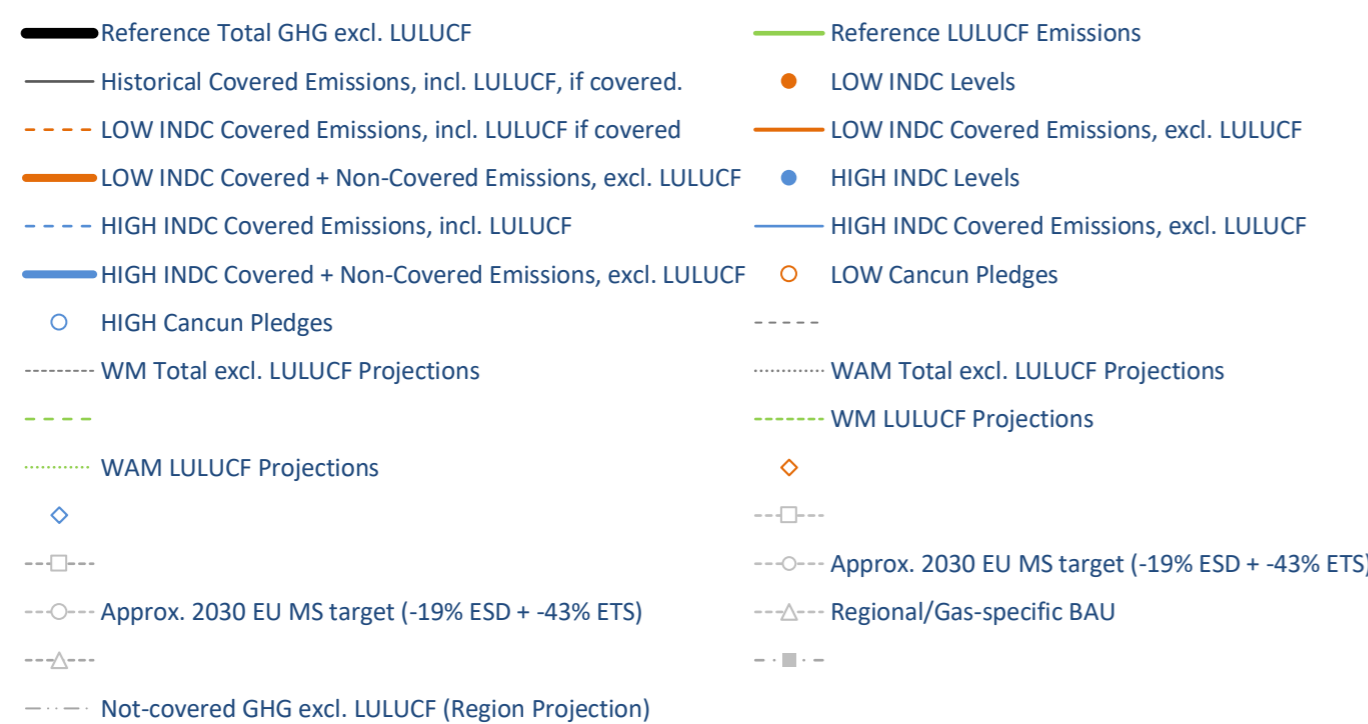
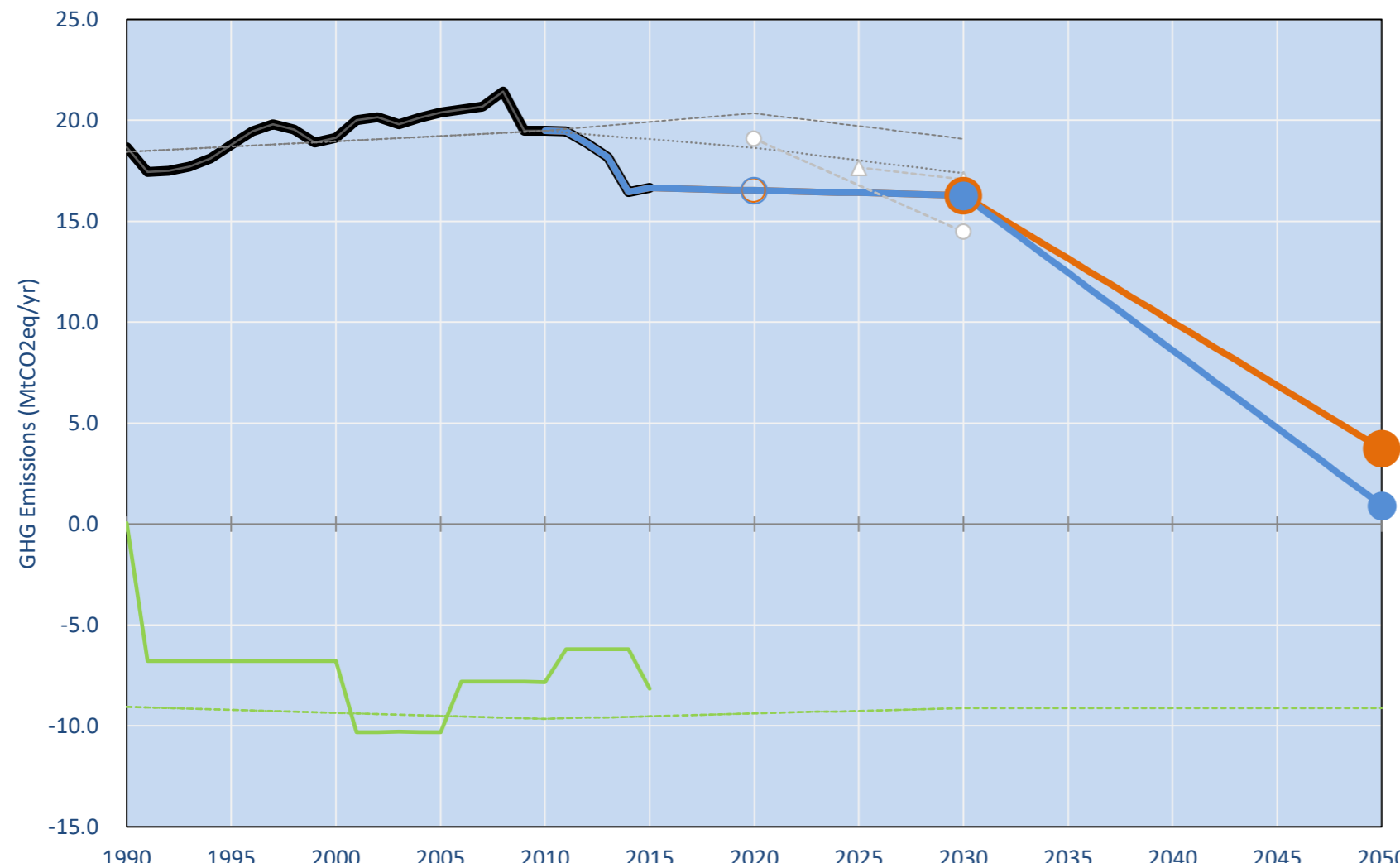
7.9t #50

7.9t #48

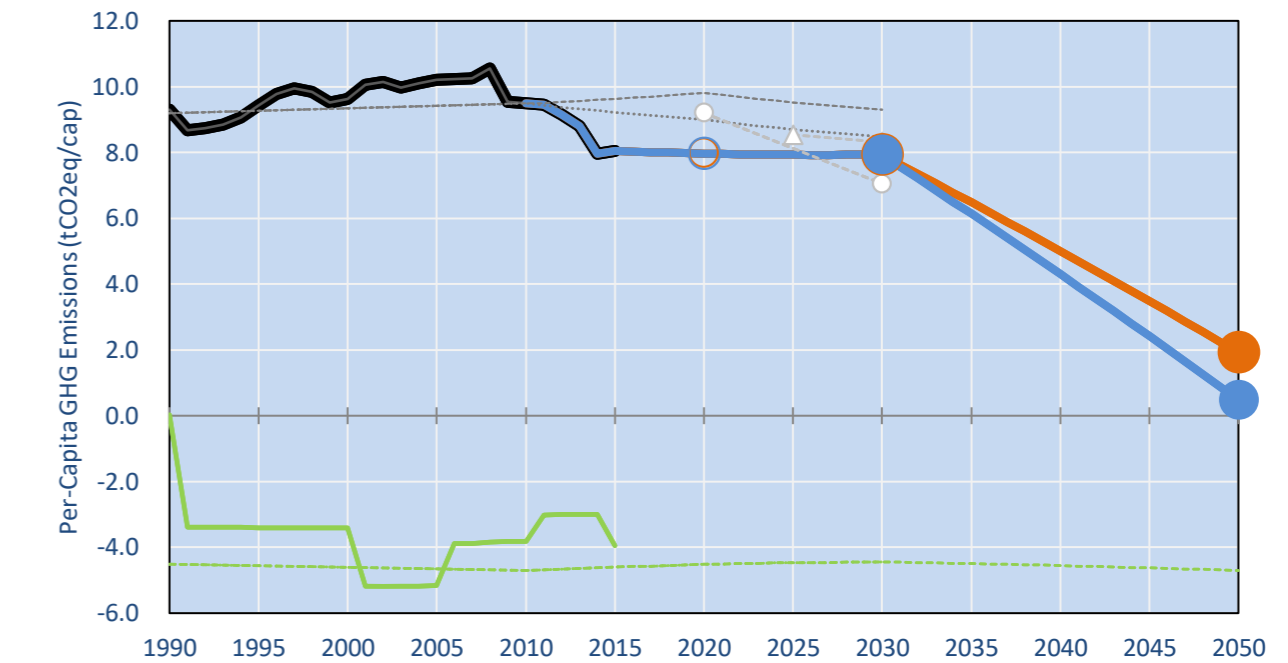
NDC: Contributing to the joint EU28 INDC with intra-EU split up of Emission Trading System and Effort Sharing Sectors.. (GWP AR4)

INDC Submitted: 6/03/2015

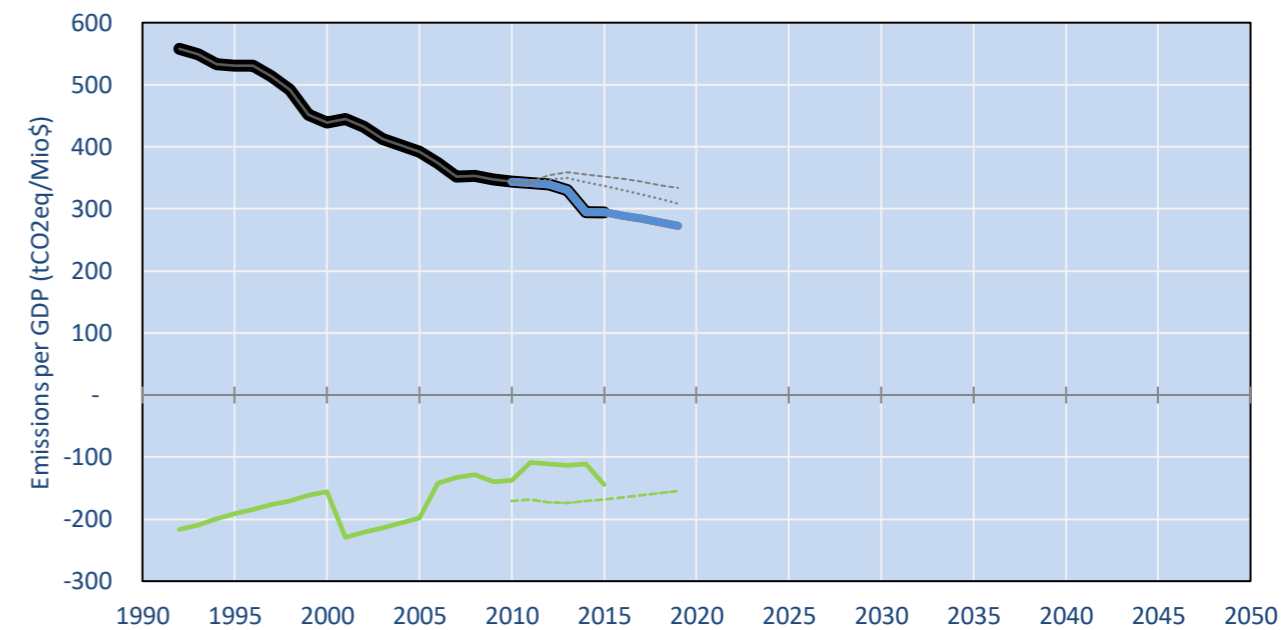
## GHG Emissions



## Per-Capita Emissions

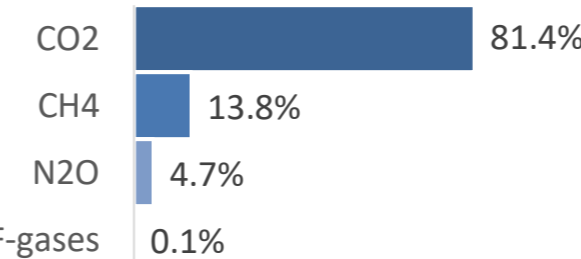


## GHG Emissions per GDP

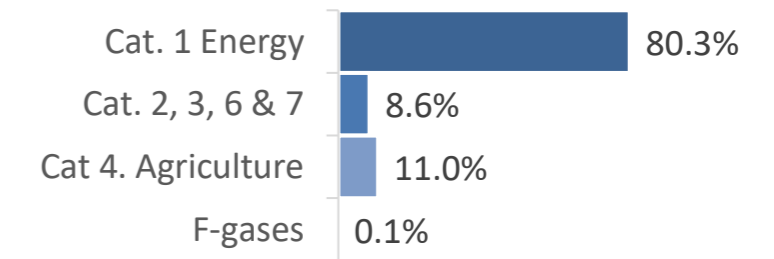


## 2015 Total GHG Emissions excl. LULUCF

By Gas:



By Sector:



## GHG Emissions

	1990	2000	2005	2010	2015	2020	2025	2030	
(MtCO2eq/yr in GWP AR5)						low	high	low	high
Assumed LULUCF Accounting Credits (-)/Debits (+)						0	0	2	2
NDC covered LULUCF Emissions									
NDC covered Emissions excl. LULUCF	19	19	20	19	17	17	16	16	16
Total GHG excl. LULUCF	19	19	20	19	17	17	16	16	16
Total GHG incl. LULUCF	19	12	10	12	8	7	7	7	7

## Relative GHG Emissions

	1990	2000	2005	2010	2015	2020	2025	2030	
Total excl. LULUCF						low	high	low	high
Relative 1990	100%	102%	109%	104%	89%	89%	88%	87%	87%
Relative 2000	98%	100%	107%	102%	87%	86%	86%	85%	85%
Relative 2005	92%	94%	100%	96%	82%	81%	80%	80%	80%
Relative 2010	96%	98%	105%	100%	85%	85%	84%	84%	84%
Relative 2015	112%	115%	123%	117%	100%	99%	99%	98%	98%

## Per-Capita Emissions

	1990	2000	2005	2010	2015	2020	2025	2030	
Total excl. LULUCF						low	high	low	high
Population (Mio)	2	2	2	2	2	2	2	2	2
Per-Capita Emissions (tCO2eq/cap)	9.3	9.6	10.2	9.5	8.1	8.0	7.9	7.9	7.9
Relative 1990	100%	103%	110%	102%	87%	86%	85%	85%	85%
Relative 2000	97%	100%	106%	99%	84%	83%	82%	82%	82%
Relative 2005	91%	94%	100%	93%	79%	78%	78%	78%	78%
Relative 2010	98%	101%	108%	100%	85%	84%	84%	84%	84%
Relative 2015	116%	120%	127%	118%	100%	99%	98%	98%	99%

## Data Sources:

Cat1_CO2	PRIMAPHIST17	Cat5A1_CO2	UNFCCC CRF + Nat. Comms.
Cat2367_CO2	PRIMAPHIST17	Cat5A2_CO2	UNFCCC CRF + Nat. Comms.
Cat4_CO2	PRIMAPHIST17	Cat5LtoNonFL_CO2	UNFCCC CRF + Nat. Comms.
Cat5_CO2	PRIMAPHIST17	Cat5GMCMWMM_C	UNFCCC CRF + Nat. Comms.
Cat1_CH4	PRIMAPHIST17	Cat5A1ForestFires	UNFCCC Cat5 + EDGAR(IPCC Database)
Cat2367_CH4	PRIMAPHIST17	Cat5A1HWP_CO2	UNFCCC CRF + Nat. Comms.
Cat4_CH4	PRIMAPHIST17	Cat5bisA_CO2	UNFCCC CRF + NATCOMM.
Cat5_CH4	PRIMAPHIST17	Cat5bisB_CO2	UNFCCC CRF + NATCOMM.
Cat1_N2O	PRIMAPHIST17	Cat5bisC_CO2	UNFCCC CRF + NATCOMM.
Cat2367_N2O	PRIMAPHIST17	Cat5bisD_CO2	UNFCCC CRF + NATCOMM.
Cat4_N2O	PRIMAPHIST17	Cat5bisE_CO2	UNFCCC CRF + NATCOMM.
Cat5_N2O	PRIMAPHIST17	PRO_WM_Cat5_G	UNFCCC Annex I Reports
Cat0_HFCs	PRIMAPHIST17	Metric	GWP AR5
Cat0_PFCs	PRIMAPHIST17		
Cat0_SF6	PRIMAPHIST17		
Population	UN 2015 Population Projections MEDIUM		
GDP	IMF WEO 2015, PPP adjusted GDP, constant 2009 prices...		
IPCC WG3 Scenario	IMAGE   AMPERE2-550-FullTech-HST		
PRIMAPHIST16 description:	www.pik-potsdam.de/primap-live/primap-hist/		
Gratefully acknowledged in particular:	PRIMAP, CAIT, CDIAC, EDGAR, IPCC, IEA, UNEP Gap Team, AMPERE Team and comments on earlier versions, in particular by Giacomo Grassi. Errors and misjudgements are our own. Malte Meinshausen & Ryan Alexander; The "Fiji COP23" Edition was enabled through support via the BMUB project UM14 41 4060		
This Factsheet is available at	www.climatecollege.unimelb.edu.au/indc-factsheets. Check out as well: www.climateactiontracker.org, www.mitigation-contributions.org, cait.wri.org, infographics.pbl.nl/indc, live.primap.org, www.unep.org/climatechange/pledgepipeline, and our twitter feed @ClimateCollege		
		climatecollege.unimelb.edu.au	
		AUSTRALIAN-GERMAN CLIMATE & ENERGY COLLEGE	

Meinshausen, Alexander et al., www.climatecollege.unimelb.edu.au/indc-factsheets, The University of Melbourne

## Various 'fair' contributions for a global 'least-cost' 2°C path (total incl. LULUCF):

2025 rel. 2010:		2030 rel. 2010:	
LEADER	#N/A	LEADER	#N/A
CDC	-57%	CDC	-65%
ECPC50	-26%	ECPC50	-33%
ECPC90	-28%	ECPC90	-36%
GDR	-74%	GDR	-90%
INDC HIGH	-39%	INDC HIGH	-39%
INDC LOW	-39%	INDC LOW	-39%

## More info on www.mitigation-contributions.org

Shown fair contributions only indicative  
"Fair" contributions for a global 'least-cost' 2°C track:  
LEADER Leader  
CDC Common-but-diff. per-cap. convergence  
ECPC50 Eq. cum. Per-capita since 1950  
ECPC90 Eq. cum. Per-capita since 1990  
GDR Greenhouse Development Rights  
#N/A No available data