

Seychelles

Per-Capita Emissions in 2030 rel. 2015 (excl. LULUCF): **+38%**

NDC 2025

NDC 2030

2015 World Rank

2025 World Rank

2030 World Rank

0% -21% rel. BAU of 0.6 Mt

0% rel. BAU of 0.9 Mt

Share of World Emissions excl. LULUCF (Rank):

0.0% #177

0.0% #178

0.0% #175

-21% rel. BAU of 0.9 Mt

Per-Capita Emissions (tCO2eq/cap)

6t #73

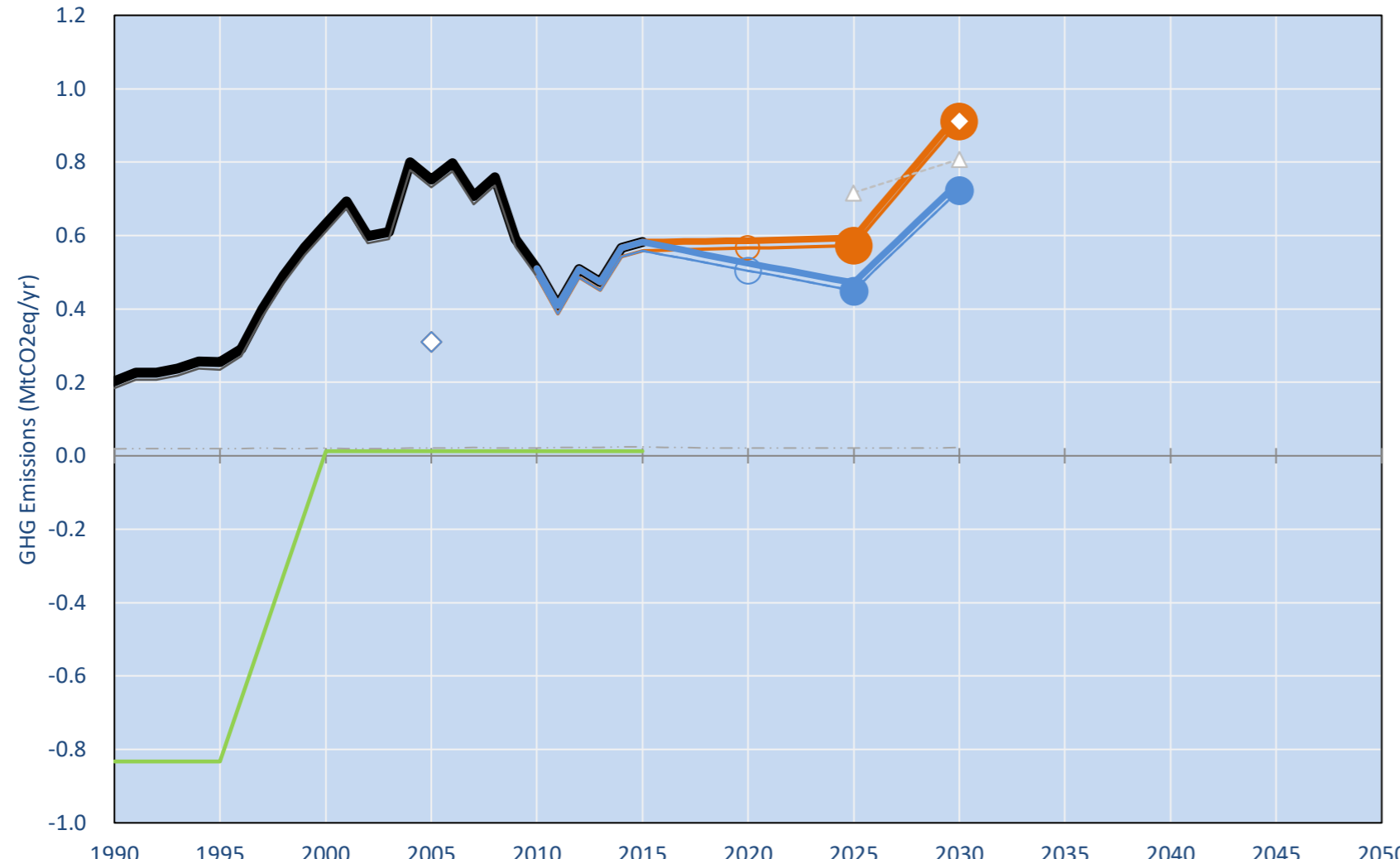
5.3t #88

8.3t #43

NDC: Economy-wide GHG emission reduction by 122.5 ktCO2eq (21.4%) in 2025 and approximately 188 ktCO2eq (29%) in 2030 relative to BAU. (GWP SAR)

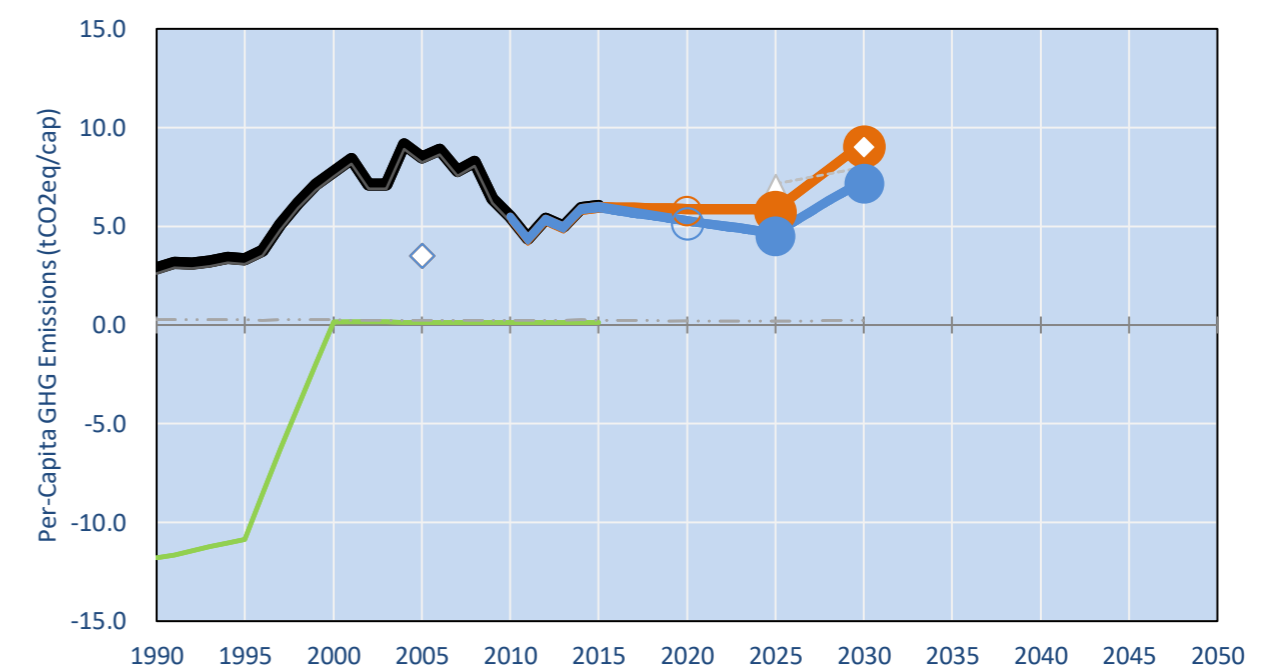
INDC Submitted: 25/09/2015

GHG Emissions

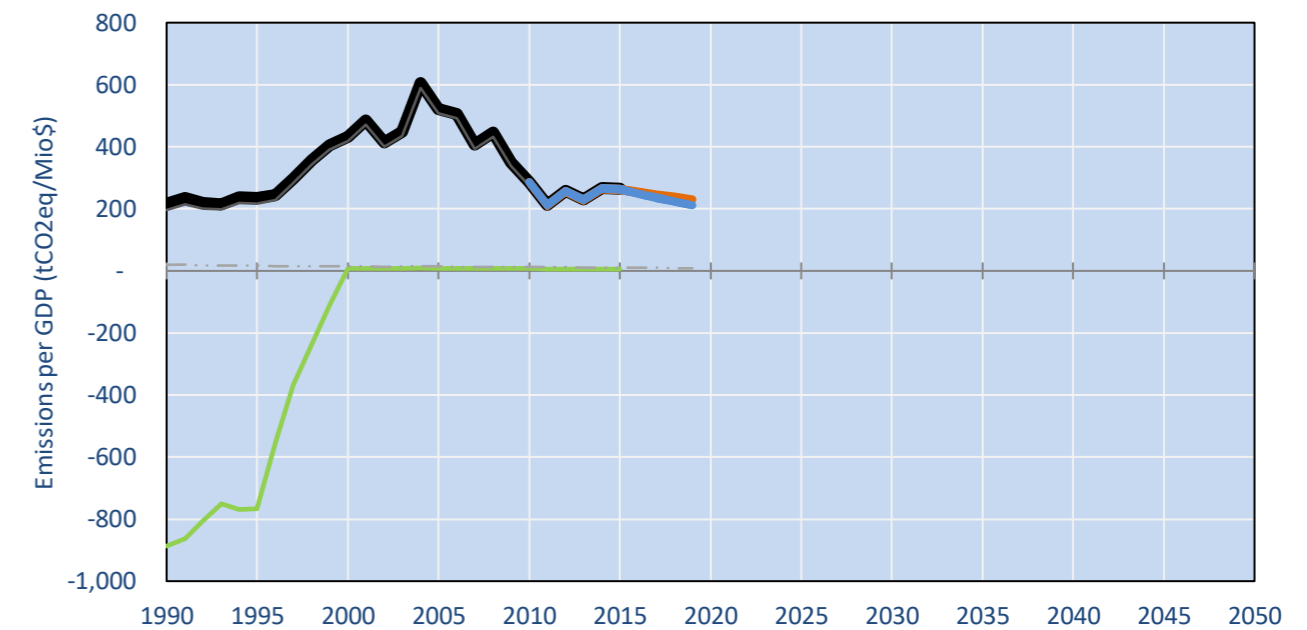


- Reference Total GHG excl. LULUCF
- Historical Covered Emissions, incl. LULUCF, if covered.
- LOW INDC Covered Emissions, incl. LULUCF if covered
- LOW INDC Covered + Non-Covered Emissions, excl. LULUCF
- HIGH INDC Covered Emissions, incl. LULUCF
- HIGH INDC Covered + Non-Covered Emissions, excl. LULUCF
- HIGH Cancun Pledges
- Conditional Reduction Scenario
- Not-covered GHG excl. LULUCF (Region Projection)
- Reference LULUCF Emissions
- LOW INDC Levels
- LOW INDC Covered Emissions, excl. LULUCF
- HIGH INDC Levels
- HIGH INDC Covered Emissions, excl. LULUCF
- LOW Cancun Pledges
- Seychelles INDC emissions GHG GWP SAR
- Regional/Gas-specific BAU

Per-Capita Emissions



GHG Emissions per GDP



2015 Total GHG Emissions excl. LULUCF

By Gas:

CO2 92.1%
CH4 4.0%
N2O 3.9%
F-gases 0.0%

By Sector:

Cat. 1 Energy 89.5%
Cat. 2, 3, 6 & 7 10.0%
Cat 4. Agriculture 0.5%
F-gases 0.0%

GHG Emissions

	1990	2000	2005	2010	2015	2020		2025		2030	
(MtCO2eq/yr in GWP SAR)						low	high	low	high	low	high
Assumed LULUCF Accounting Credits (-)/Debits (+)											
NDC covered LULUCF Emissions											
NDC covered Emissions excl. LULUCF	0	1	1	0	1	1	1	1	0	1	1
Total GHG excl. LULUCF	0	1	1	1	1	1	1	1	0	1	1
Total GHG incl. LULUCF	1	1	1	1	1	1	1	1	0	1	1

Relative GHG Emissions

	1990	2000	2005	2010	2015	2020		2025		2030	
Total excl. LULUCF						low	high	low	high	low	high
Relative 1990	100%	311%	370%	251%	287%	289%	258%	292%	232%	460%	367%
Relative 2000	32%	100%	119%	81%	92%	93%	83%	94%	75%	148%	118%
Relative 2005	27%	84%	100%	68%	77%	78%	70%	79%	63%	124%	99%
Relative 2010	40%	124%	147%	100%	114%	115%	103%	116%	92%	183%	146%
Relative 2015	35%	108%	129%	88%	100%	101%	90%	102%	81%	160%	128%

Per-Capita Emissions

	1990	2000	2005	2010	2015	2020		2025		2030	
Total excl. LULUCF						low	high	low	high	low	high
Population (Mio)	0	0	0	0	0	0	0	0	0	0	0
Per-Capita Emissions (tCO2eq/cap)	2.9	7.8	8.5	5.5	6.0	5.9	5.3	5.9	4.7	9.2	7.4
Relative 1990	100%	270%	295%	191%	210%	206%	185%	206%	163%	321%	257%
Relative 2000	37%	100%	109%	71%	78%	76%	68%	76%	60%	119%	95%
Relative 2005	34%	92%	100%	65%	71%	70%	63%	70%	55%	109%	87%
Relative 2010	52%	142%	154%	100%	110%	108%	97%	108%	86%	168%	134%
Relative 2015	48%	129%	140%	91%	100%	98%	88%	98%	78%	153%	122%

Data Sources:

Cat1_CO2 PRIMAPHIST17
Cat2367_CO2 PRIMAPHIST17
Cat4_CO2 PRIMAPHIST17
Cat5_CO2 PRIMAPHIST17
Cat1_CH4 PRIMAPHIST17
Cat2367_CH4 PRIMAPHIST17
Cat4_CH4 PRIMAPHIST17
Cat5_CH4 PRIMAPHIST17
Cat1_N2O PRIMAPHIST17
Cat2367_N2O PRIMAPHIST17
Cat4_N2O PRIMAPHIST17
Cat5_N2O PRIMAPHIST17
Cat0_HFCs PRIMAPHIST17
Cat0_PFCs PRIMAPHIST17
Cat0_SF6 PRIMAPHIST17
Population UN 2015 Population Projections MEDIUM
GDP IMF WEO 2015, PPP adjusted GDP, constant 2009 prices...
IPCC WG3 Scenario IMAGE | AMPERE2-550-FullTech-HST
PRIMAPHIST16 description: www.pik-potsdam.de/primap-live/primap-hist/
Gratefully acknowledged in particular: PRIMAP, CAIT, CDIAC, EDGAR, IPCC, IEA, UNEP Gap Team, AMPERE Team and comments on earlier versions, in particular by Giacomo Grassi. Errors and misjudgements are our own. Malte Meinshausen & Ryan Alexander; The "Fiji COP23" Edition was enabled through support via the BMUB project UM14 41 4060
This Factsheet is available at www.climatecollege.unimelb.edu.au/indc-factsheets. Check out as well: www.climateactiontracker.org, www.mitigation-contributions.org, cait.wri.org, infographics.pbl.nl/indc, live.primap.org, www.unep.org/climatechange/pledgepipeline, and our twitter feed @ClimateCollege
climatecollege.unimelb.edu.au
AUSTRALIAN-GERMAN CLIMATE & ENERGY COLLEGE

Various 'fair' contributions for a global 'least-cost' 2°C path (total incl. LULUCF):

	2025 rel. 2010:	2030 rel. 2010:
LEADER	#N/A	LEADER
CDC	#N/A	CDC
ECPC50	#N/A	ECPC50
ECPC90	#N/A	ECPC90
GDR	#N/A	GDR
INDC HIGH	-8%	INDC HIGH
INDC LOW	16%	INDC LOW

More info on www.mitigation-contributions.org

"Fair" contributions for a global 'least-cost' 2°C track:

LEADER Leader
CDC Common-but-diff. per-cap. convergence
ECPC50 Eq. cum. Per-capita since 1950
ECPC90 Eq. cum. Per-capita since 1990
GDR Greenhouse Development Rights
#N/A No available data