

Senegal

Per-Capita Emissions in 2030 rel. 2015 (excl. LULUCF): **+39%**

INDC 2025

INDC 2030

2015 World Rank

2025 World Rank

2030 World Rank

Share of World Emissions excl. LULUCF (Rank):

0.1% #112

0.1% #94

0.1% #89

Per-Capita Emissions (tCO2eq/cap)

1.6t #159

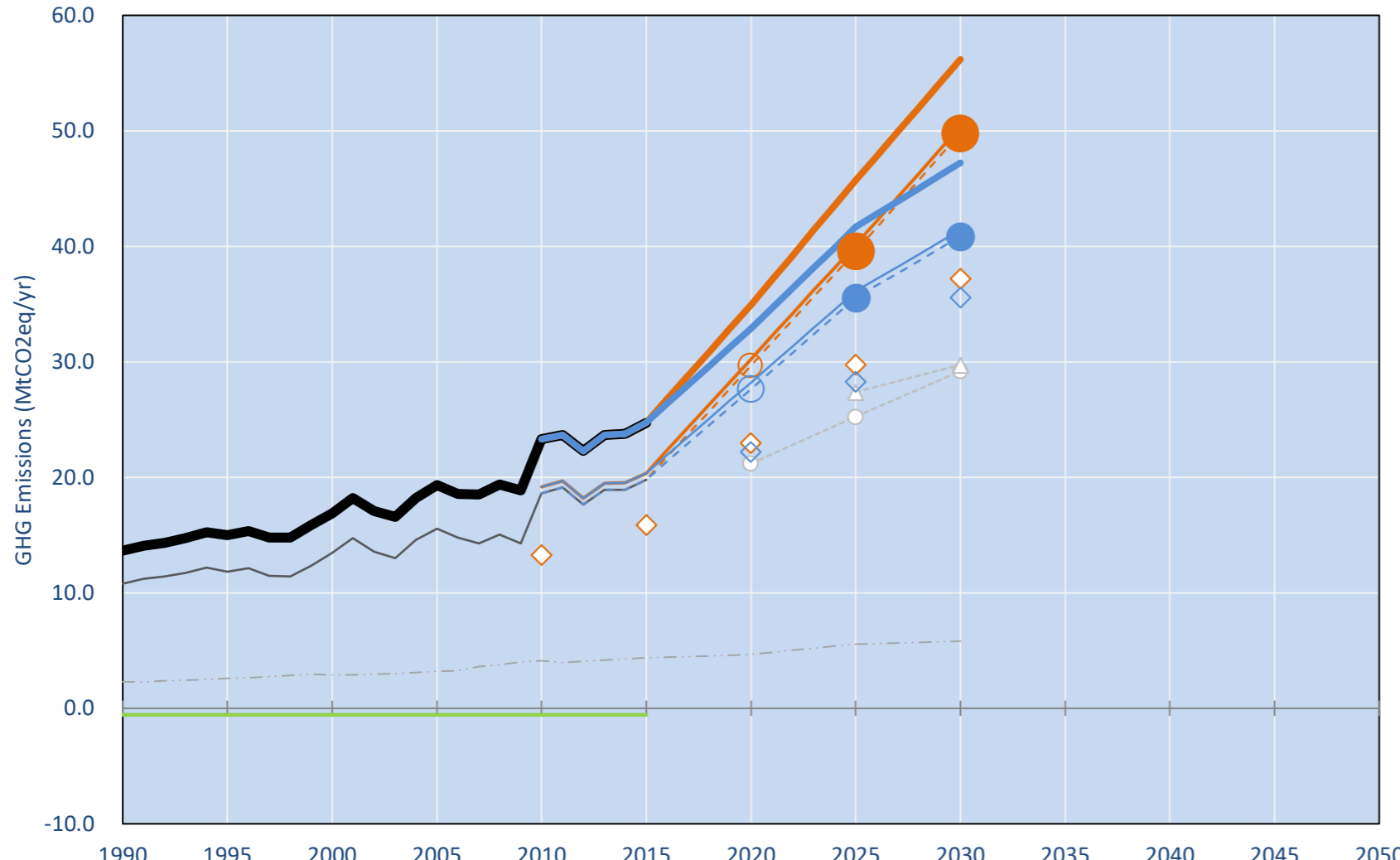
2.2t #143

2.3t #139

INDC: Implementation of specific policies and actions which are estimated to reduce GHG emissions by 4% in 2025 and 5% in 2030 Conditional target: up to 15% and 21% reduction pending on international support. (IPCC 2006 Guidelines)

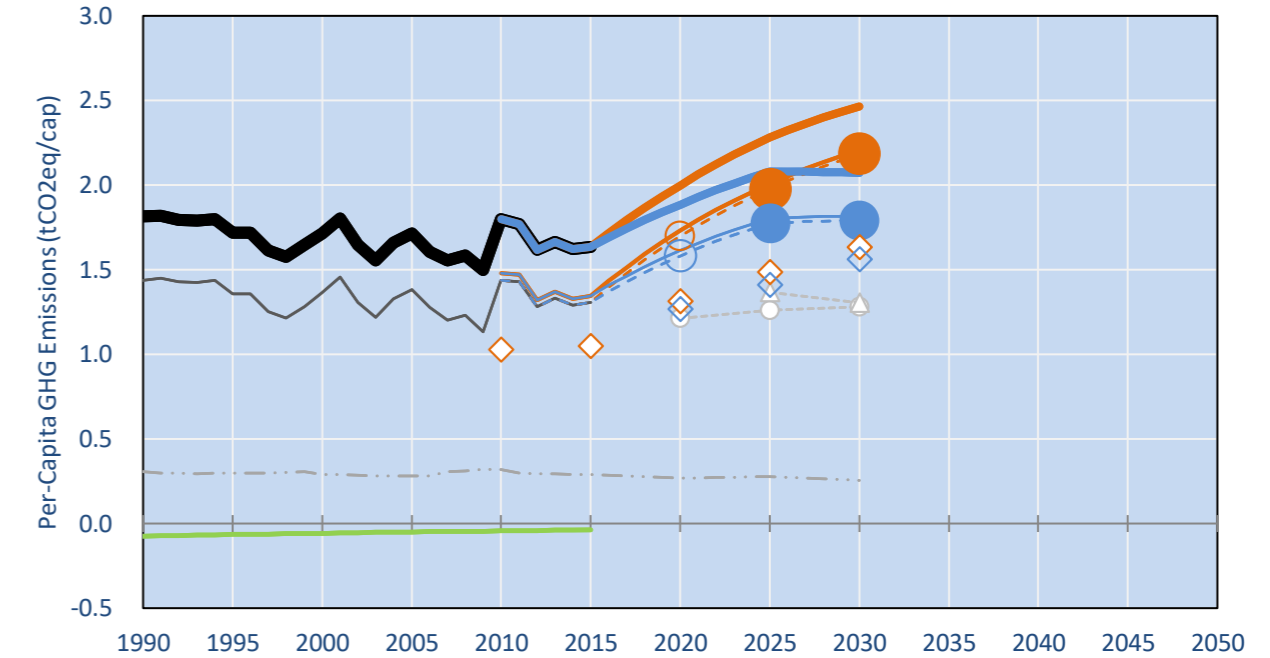
INDC Submitted: 26/09/2015

GHG Emissions

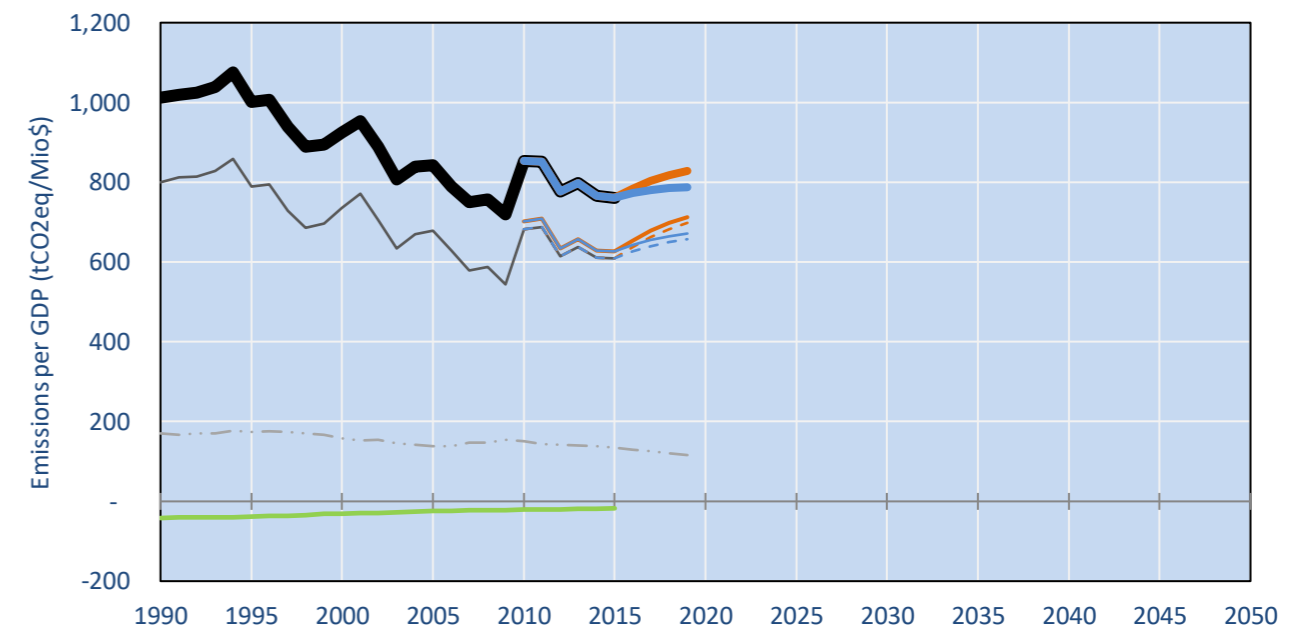


- Reference Total GHG excl. LULUCF
- Historical Covered Emissions, incl. LULUCF, if covered.
- LOW INDC Covered Emissions, incl. LULUCF if covered
- LOW INDC Covered + Non-Covered Emissions, excl. LULUCF
- HIGH INDC Covered Emissions, incl. LULUCF
- HIGH INDC Covered + Non-Covered Emissions, excl. LULUCF
- HIGH Cancun Pledges
- Senegal unconditional INDC GWP
- Senegal INDC conditional GWP unclar
- Not-covered GHG excl. LULUCF (Region Projection)
- Reference LULUCF Emissions
- LOW INDC Levels
- LOW INDC Covered Emissions, excl. LULUCF
- HIGH INDC Levels
- HIGH INDC Covered Emissions, excl. LULUCF
- LOW Cancun Pledges
- Senegal INDC BAU
- Regional/Gas-specific BAU

Per-Capita Emissions



GHG Emissions per GDP



2015 Total GHG Emissions excl. LULUCF

By Gas:

| | |
|---------|-------|
| CO2 | 38.0% |
| CH4 | 37.9% |
| N2O | 24.1% |
| F-gases | 0.0% |

By Sector:

| | |
|--------------------|-------|
| Cat. 1 Energy | 34.6% |
| Cat. 2, 3, 6 & 7 | 21.1% |
| Cat 4. Agriculture | 44.4% |
| F-gases | 0.0% |

GHG Emissions

| | 1990 | 2000 | 2005 | 2010 | 2015 | 2020 | | 2025 | | 2030 | |
|--------------------------------------------------|------|------|------|------|------|------|------|------|------|------|------|
| | | | | | | low | high | low | high | low | high |
| (MtCO2eq/yr in GWP SAR) | | | | | | | | | | | |
| Assumed LULUCF Accounting Credits (-)/Debits (+) | | | | | | | | | | | |
| INDC covered LULUCF Emissions | - | 1 | - | 1 | - | 1 | - | 1 | - | 1 | - |
| INDC covered Emissions excl. LULUCF | 11 | 14 | 16 | 19 | 20 | 30 | 28 | 40 | 36 | 50 | 41 |
| Total GHG excl. LULUCF | 14 | 17 | 19 | 23 | 25 | 35 | 33 | 46 | 42 | 56 | 47 |
| Total GHG incl. LULUCF | 13 | 16 | 19 | 23 | 24 | 34 | 32 | 45 | 41 | 56 | 47 |

Relative GHG Emissions

| | 1990 | 2000 | 2005 | 2010 | 2015 | 2020 | | 2025 | | 2030 | |
|--------------------|------|------|------|------|------|------|------|------|------|------|------|
| | | | | | | low | high | low | high | low | high |
| Total excl. LULUCF | | | | | | | | | | | |
| Relative 1990 | 100% | 124% | 142% | 171% | 181% | 256% | 241% | 335% | 305% | 412% | 346% |
| Relative 2000 | 81% | 100% | 114% | 138% | 146% | 207% | 195% | 271% | 247% | 333% | 280% |
| Relative 2005 | 71% | 87% | 100% | 121% | 128% | 181% | 170% | 237% | 216% | 291% | 244% |
| Relative 2010 | 59% | 72% | 83% | 100% | 106% | 150% | 141% | 196% | 179% | 241% | 203% |
| Relative 2015 | 55% | 68% | 78% | 94% | 100% | 141% | 133% | 185% | 169% | 227% | 191% |

Per-Capita Emissions

| | 1990 | 2000 | 2005 | 2010 | 2015 | 2020 | | 2025 | | 2030 | |
|-----------------------------------|------|------|------|------|------|------|------|------|------|------|------|
| | | | | | | low | high | low | high | low | high |
| Total excl. LULUCF | | | | | | | | | | | |
| Population (Mio) | 8 | 10 | 11 | 13 | 15 | 17 | 17 | 20 | 20 | 23 | 23 |
| Per-Capita Emissions (tCO2eq/cap) | 1.8 | 1.7 | 1.7 | 1.8 | 1.6 | 2.0 | 1.9 | 2.3 | 2.1 | 2.5 | 2.1 |
| Relative 1990 | 100% | 94% | 94% | 99% | 90% | 110% | 104% | 126% | 114% | 136% | 114% |
| Relative 2000 | 106% | 100% | 100% | 105% | 95% | 117% | 110% | 133% | 121% | 144% | 121% |
| Relative 2005 | 106% | 100% | 100% | 105% | 95% | 116% | 110% | 133% | 121% | 144% | 121% |
| Relative 2010 | 101% | 95% | 95% | 100% | 91% | 111% | 105% | 127% | 116% | 137% | 115% |
| Relative 2015 | 111% | 105% | 105% | 110% | 100% | 122% | 115% | 140% | 127% | 151% | 127% |

Data Sources:

| | | | |
|-------------|----------------------------------------------------------------------------------------------------------------------------------------------------------------------------------------------------------------------------------------------------------------------------------------------------------------------------------------------|--------------------------------------------|------------------------------------|
| Cat1_CO2 | PRIMAPHIST17 | Cat5A1_CO2 | UNFCCC CRF + Nat. Comms. |
| Cat2367_CO2 | PRIMAPHIST17 | Cat5A2_CO2 | UNFCCC CRF + Nat. Comms. |
| Cat4_CO2 | PRIMAPHIST17 | Cat5LtoNonFL_CO | UNFCCC CRF + Nat. Comms. |
| Cat5_CO2 | PRIMAPHIST17 | Cat5GMCMWMM_C | UNFCCC CRF |
| Cat1_CH4 | PRIMAPHIST17 | Cat5A1ForestFires | UNFCCC Cat5 + EDGAR(IPCC Database) |
| Cat2367_CH4 | PRIMAPHIST17 | Cat5A1HWP_CO2 | UNFCCC CRF + Nat. Comms. |
| Cat4_CH4 | PRIMAPHIST17 | Cat5bisA_CO2 | UNFCCC CRF + NATCOMM. |
| Cat5_CH4 | PRIMAPHIST17 | Cat5bisB_CO2 | UNFCCC CRF + NATCOMM. |
| Cat1_N2O | PRIMAPHIST17 | Cat5bisC_CO2 | UNFCCC CRF + NATCOMM. |
| Cat2367_N2O | PRIMAPHIST17 | Cat5bisD_CO2 | UNFCCC CRF + NATCOMM. |
| Cat4_N2O | PRIMAPHIST17 | Cat5bisE_CO2 | UNFCCC CRF + NATCOMM. |
| Cat5_N2O | PRIMAPHIST17 | PRO_WM_Cat5_G | UNFCCC Annex I Reports |
| Cat0_HFCs | PRIMAPHIST17 | Metric | GWP SAR |
| Cat0_PFCs | PRIMAPHIST17 | | |
| Cat0_SF6 | PRIMAPHIST17 | | |
| Population | UN 2015 Population Projections MEDIUM | | |
| GDP | IMF WEO 2015, PPP adjusted GDP, constant 2009 prices... | | |
| | IPCC WG3 Scenario IMAGE AMPERE2-550-FullTech-HST | | |
| | PRIMAPHIST16 description: www.pik-potsdam.de/primap-live/primap-hist/ | | |
| | Gratefully acknowledged in particular: PRIMAP, CAIT, CDIAC, EDGAR, IPCC, IEA, UNEP GAP Team, AMPERE Team and comments on earlier versions, in particular by Giacomo Grassi. Errors and misjudgements are our own. Malte Meinshausen & Ryan Alexander; The "Fiji COP23" Edition was enabled through support via the BMUB project UM14 41 4060 | | |
| | This Factsheet is available at www.climatecollege.unimelb.edu.au/indc-factsheets. Check out as well: www.climateactiontracker.org, www.mitigation-contributions.org, cait.wri.org, infographics.pbl.nl/indc, live.primap.org, www.unep.org/climatechange/pledgepipeline, and our twitter feed @ClimateCollege | | |
| | | climatecollege.unimelb.edu.au | |
| | | AUSTRALIAN-GERMAN CLIMATE & ENERGY COLLEGE | |

Various 'fair' contributions for a global 'least-cost' 2°C path (total incl. LULUCF):

| | 2025 rel. 2010: | 2030 rel. 2010: |
|-----------|-----------------|-----------------|
| LEADER | #N/A | LEADER #N/A |
| CDC | #N/A | CDC #N/A |
| ECPC50 | #N/A | ECPC50 #N/A |
| ECPC90 | #N/A | ECPC90 #N/A |
| GDR | #N/A | GDR #N/A |
| INDC HIGH | 81% | INDC HIGH 105% |
| INDC LOW | 99% | INDC LOW 145% |

More info on www.mitigation-contributions.org

"Fair" contributions for a global 'least-cost' 2°C track:

| | |
|--------|---------------------------------------|
| LEADER | Leader |
| CDC | Common-but-diff. per-cap. convergence |
| ECPC50 | Eq. cum. Per-capita since 1950 |
| ECPC90 | Eq. cum. Per-capita since 1990 |
| GDR | Greenhouse Development Rights |
| #N/A | No available data |