

Senegal

Per-Capita Emissions in 2030 rel. 2015 (excl. LULUCF): **+37%**

INDC 2025

INDC 2030

2015 World Rank

2025 World Rank

2030 World Rank

Share of World Emissions excl. LULUCF (Rank):

0.1% #113

0.1% #93

0.1% #85

Per-Capita Emissions (tCO₂eq/cap)

1.8t #160

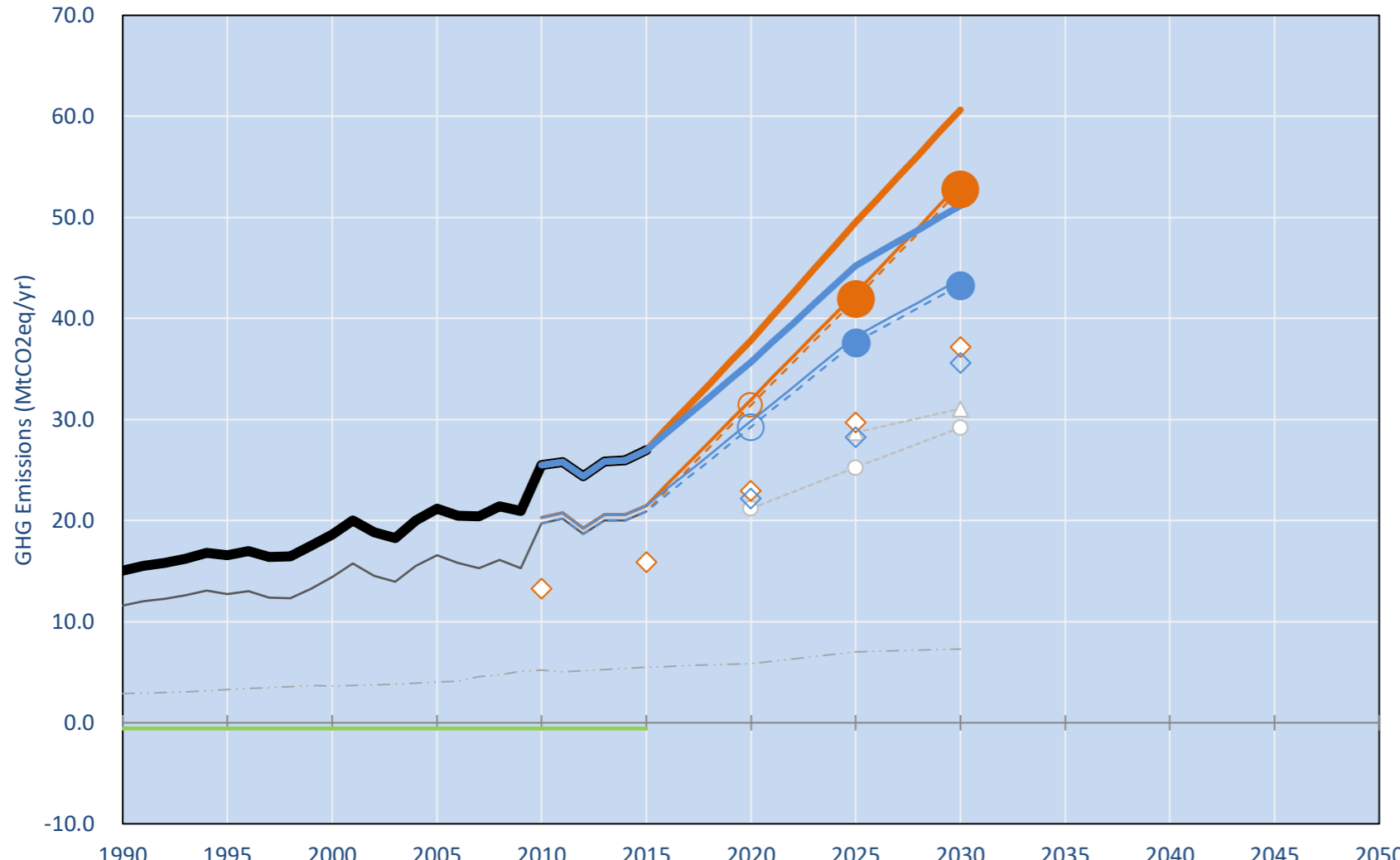
2.4t #140

2.5t #138

INDC: Implementation of specific policies and actions which are estimated to reduce GHG emissions by 4% in 2025 and 5% in 2030 Conditional target: up to 15% and 21% reduction pending on international support. (IPCC 2006 Guidelines)

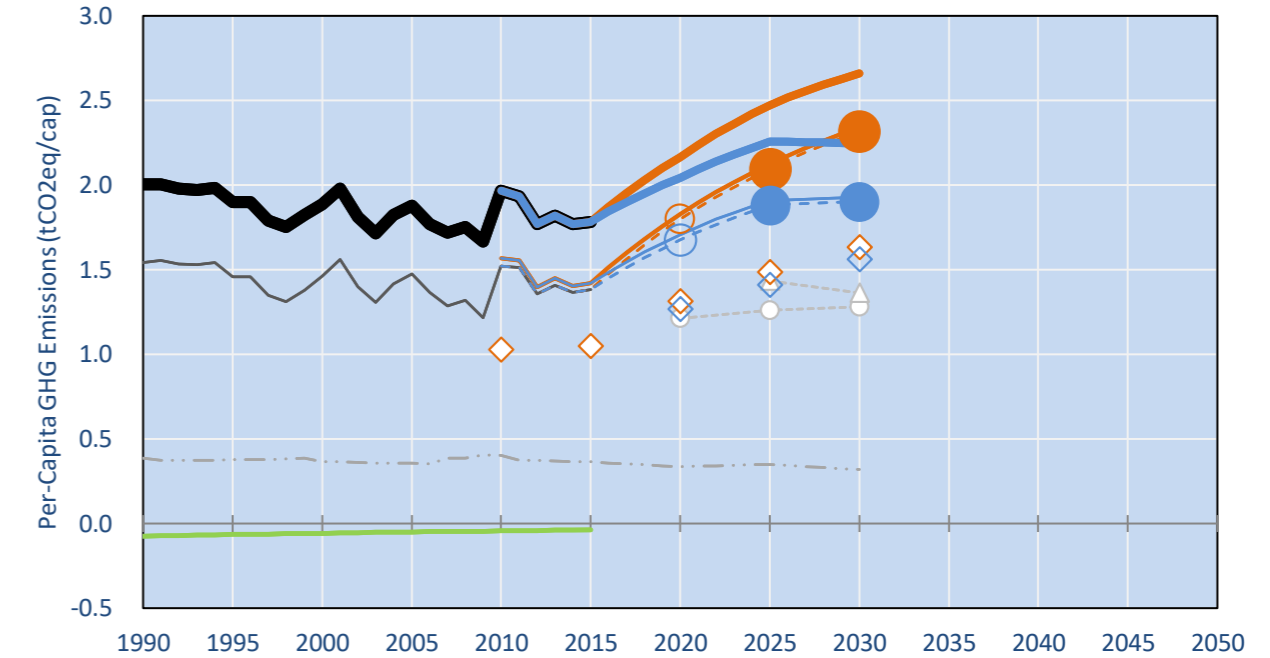
INDC Submitted: 26/09/2015

GHG Emissions

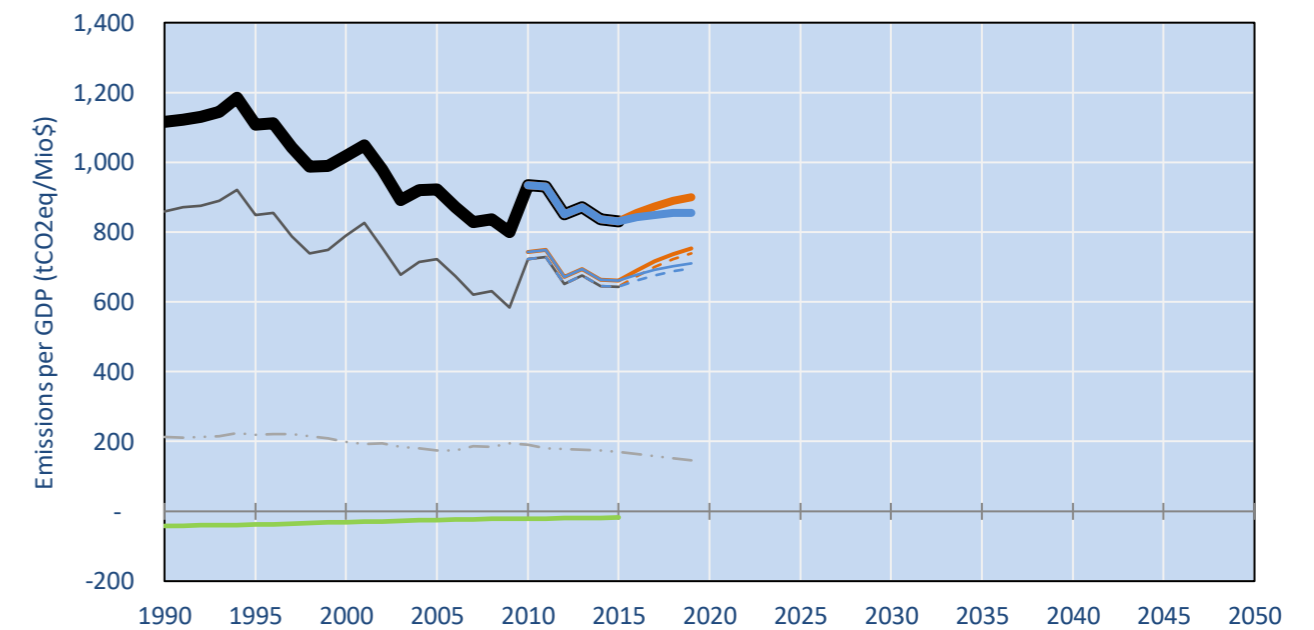


- Reference Total GHG excl. LULUCF
- Historical Covered Emissions, incl. LULUCF, if covered.
- LOW INDC Covered Emissions, incl. LULUCF if covered
- LOW INDC Covered + Non-Covered Emissions, excl. LULUCF
- HIGH INDC Covered Emissions, incl. LULUCF
- HIGH INDC Covered + Non-Covered Emissions, excl. LULUCF
- HIGH Cancun Pledges
- Senegal unconditional INDC GWP
- Senegal INDC conditional GWP unclar
- Not-covered GHG excl. LULUCF (Region Projection)
- Reference LULUCF Emissions
- LOW INDC Levels
- LOW INDC Covered Emissions, excl. LULUCF
- HIGH INDC Levels
- HIGH INDC Covered Emissions, excl. LULUCF
- LOW Cancun Pledges
- Senegal INDC BAU
- Regional/Gas-specific BAU

Per-Capita Emissions

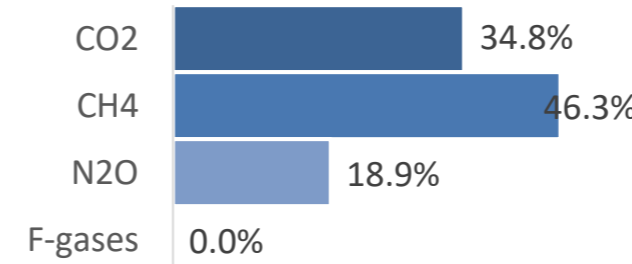


GHG Emissions per GDP

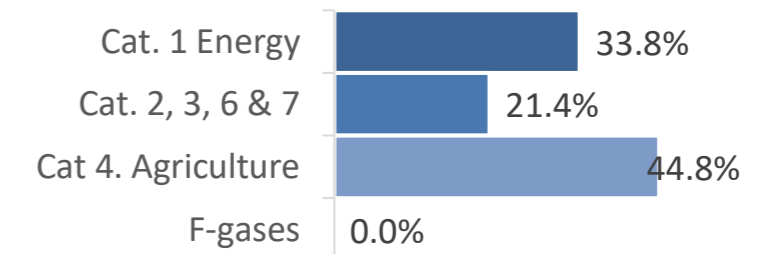


2015 Total GHG Emissions excl. LULUCF

By Gas:



By Sector:



GHG Emissions

	1990	2000	2005	2010	2015	2020		2025		2030	
(MtCO ₂ eq/yr in GWP AR5)						low	high	low	high	low	high
Assumed LULUCF Accounting Credits (-)/Debits (+)											
INDC covered LULUCF Emissions	-	1	-	1	-	1	-	1	-	1	-
INDC covered Emissions excl. LULUCF	12	15	17	20	21	32	30	43	38	53	44
Total GHG excl. LULUCF	15	19	21	26	27	38	36	50	45	61	51
Total GHG incl. LULUCF	14	18	21	25	26	37	35	49	45	60	51

Relative GHG Emissions

	1990	2000	2005	2010	2015	2020		2025		2030	
Total excl. LULUCF						low	high	low	high	low	high
Relative 1990	100%	124%	141%	169%	179%	252%	237%	329%	300%	403%	340%
Relative 2000	81%	100%	114%	137%	145%	203%	192%	266%	243%	326%	275%
Relative 2005	71%	88%	100%	120%	127%	179%	169%	234%	213%	286%	242%
Relative 2010	59%	73%	83%	100%	106%	148%	140%	194%	177%	238%	201%
Relative 2015	56%	69%	79%	95%	100%	140%	132%	184%	168%	225%	190%

Per-Capita Emissions

	1990	2000	2005	2010	2015	2020		2025		2030	
Total excl. LULUCF						low	high	low	high	low	high
Population (Mio)	8	10	11	13	15	17	17	20	20	23	23
Per-Capita Emissions (tCO ₂ eq/cap)	2.0	1.9	1.9	2.0	1.8	2.2	2.0	2.5	2.3	2.7	2.2
Relative 1990	100%	94%	94%	98%	89%	108%	102%	123%	113%	133%	112%
Relative 2000	106%	100%	100%	104%	94%	115%	108%	131%	120%	141%	119%
Relative 2005	107%	100%	100%	105%	95%	115%	109%	131%	120%	142%	119%
Relative 2010	102%	96%	95%	100%	91%	110%	104%	126%	115%	135%	114%
Relative 2015	112%	106%	105%	110%	100%	121%	115%	139%	127%	149%	126%

Data Sources:

- Cat1_CO2 PRIMAPHIST17
- Cat2367_CO2 PRIMAPHIST17
- Cat4_CO2 PRIMAPHIST17
- Cat5_CO2 PRIMAPHIST17
- Cat1_CH4 PRIMAPHIST17
- Cat2367_CH4 PRIMAPHIST17
- Cat4_CH4 PRIMAPHIST17
- Cat5_CH4 PRIMAPHIST17
- Cat1_N2O PRIMAPHIST17
- Cat2367_N2O PRIMAPHIST17
- Cat4_N2O PRIMAPHIST17
- Cat5_N2O PRIMAPHIST17
- Cat0_HFCs PRIMAPHIST17
- Cat0_PFCs PRIMAPHIST17
- Cat0_SF6 PRIMAPHIST17
- Population UN 2015 Population Projections MEDIUM
- GDP IMF WEO 2015, PPP adjusted GDP, constant 2009 prices...
- PRIMAPHIST16 description: www.pik-potsdam.de/primap-live/primap-hist/
- Gratefully acknowledged in particular: PRIMAP, CAIT, CDIAC, EDGAR, IPCC, IEA, UNEP GAP Team, AMPERE Team and comments on earlier versions, in particular by Giacomo Grassi. Errors and misjudgements are our own. Malte Meinshausen & Ryan Alexander; The "Fiji COP23" Edition was enabled through support via the BMUB project UM14 41 4060
- This Factsheet is available at www.climatecollege.unimelb.edu.au/indc-factsheets. Check out as well: www.climateactiontracker.org, www.mitigation-contributions.org, cait.wri.org, infographics.pbl.nl/indc, live.primap.org, www.unep.org/climatechange/pledgepipeline, and our twitter feed @ClimateCollege
- Cat5A1_CO2 UNFCCC CRF + Nat. Comms.
- Cat5A2_CO2 UNFCCC CRF + Nat. Comms.
- Cat5LtoNonFL_CO2 UNFCCC CRF + Nat. Comms.
- Cat5GMCMWMM_C UNFCCC CRF
- Cat5A1ForestFires UNFCCC Cat5 + EDGAR(IPCC Database)
- Cat5A1HWP_CO2 UNFCCC CRF + Nat. Comms.
- Cat5bisA_CO2 UNFCCC CRF + NATCOMM.
- Cat5bisB_CO2 UNFCCC CRF + NATCOMM.
- Cat5bisC_CO2 UNFCCC CRF + NATCOMM.
- Cat5bisD_CO2 UNFCCC CRF + NATCOMM.
- Cat5bisE_CO2 UNFCCC CRF + NATCOMM.
- PRO_WM_Cat5_G UNFCCC Annex I Reports
- Metric GWP AR5



Various 'fair' contributions for a global 'least-cost' 2°C path (total incl. LULUCF):

More info on www.mitigation-contributions.org

	2025 rel. 2010:	2030 rel. 2010:
LEADER	#N/A	LEADER #N/A
CDC	#N/A	CDC #N/A
ECPC50	#N/A	ECPC50 #N/A
ECPC90	#N/A	ECPC90 #N/A
GDR	#N/A	GDR #N/A
INDC HIGH	79%	INDC HIGH 103%
INDC LOW	96%	INDC LOW 141%

"Fair" contributions for a global 'least-cost' 2°C track:

- LEADER Leader
- CDC Common-but-diff. per-cap. convergence
- ECPC50 Eq. cum. Per-capita since 1950
- ECPC90 Eq. cum. Per-capita since 1990
- GDR Greenhouse Development Rights
- #N/A No available data