



Paris Agreement ratified on: 22/04/2016

Saint Kitts and Nevis

Per-Capita Emissions in 2030 rel. 2015 (excl. LULUCF):



+51%

NDC 2025

NDC 2030

2015 World Rank

2025 World Rank

2030 World Rank

-22% rel. BAU of 0.7 Mt

-35% rel. BAU of 0.8 Mt

Share of World Emissions excl. LULUCF (Rank):

0.0% #183

0.0% #177

0.0% #178

Per-Capita Emissions (tCO2eq/cap)

6.2t #69

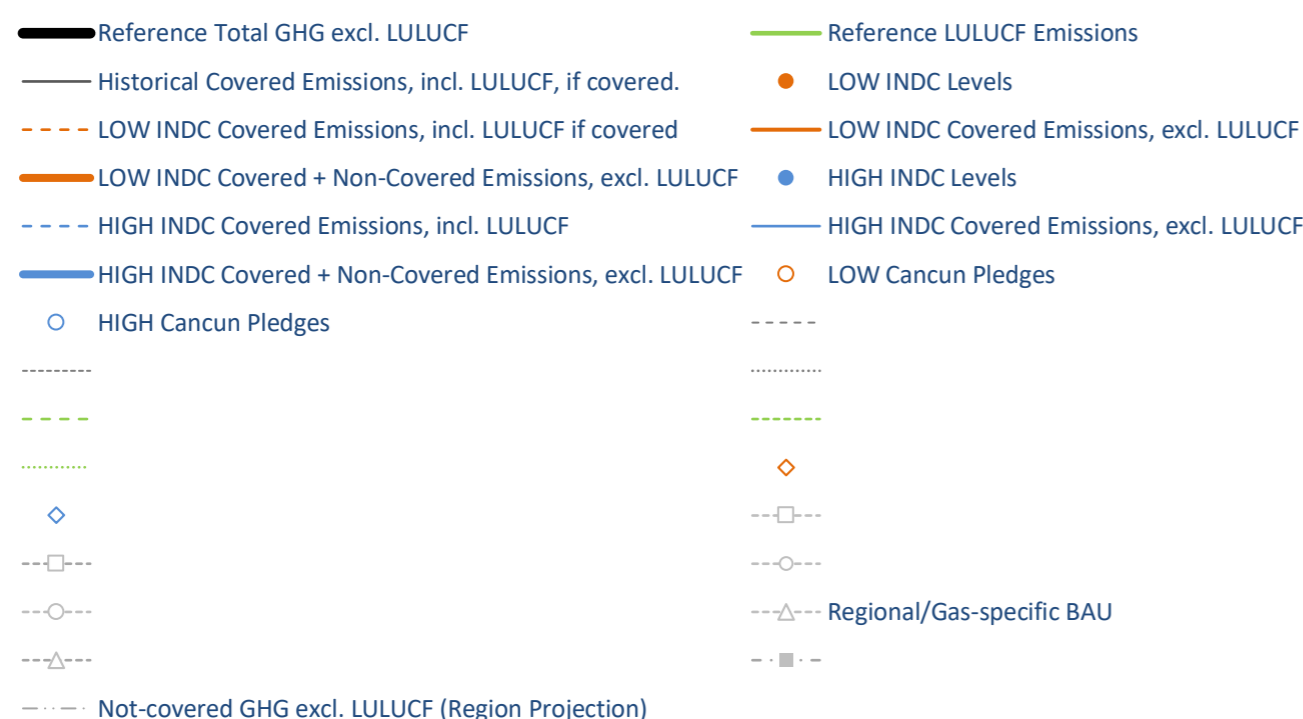
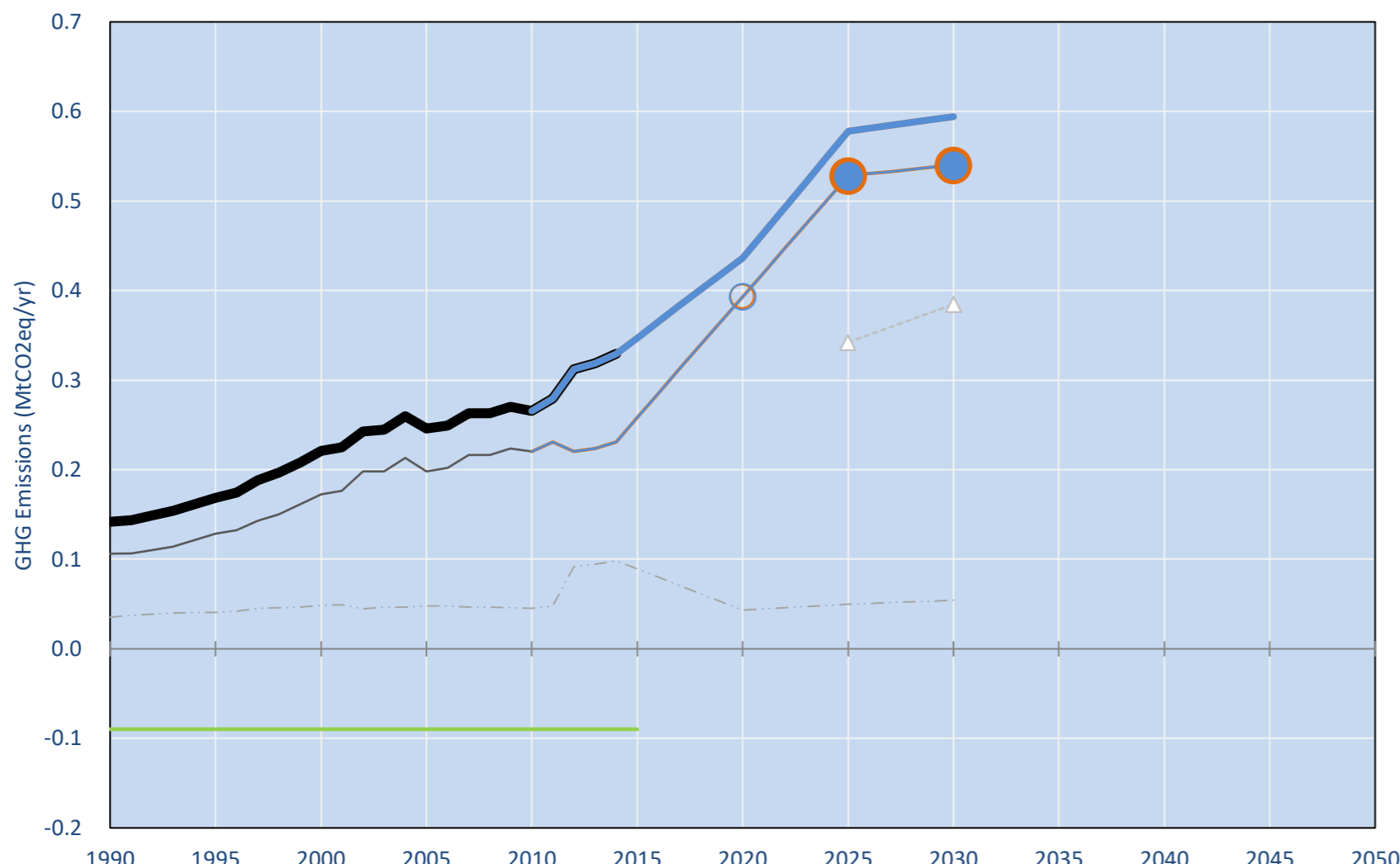
9.5t #34

9.4t #34

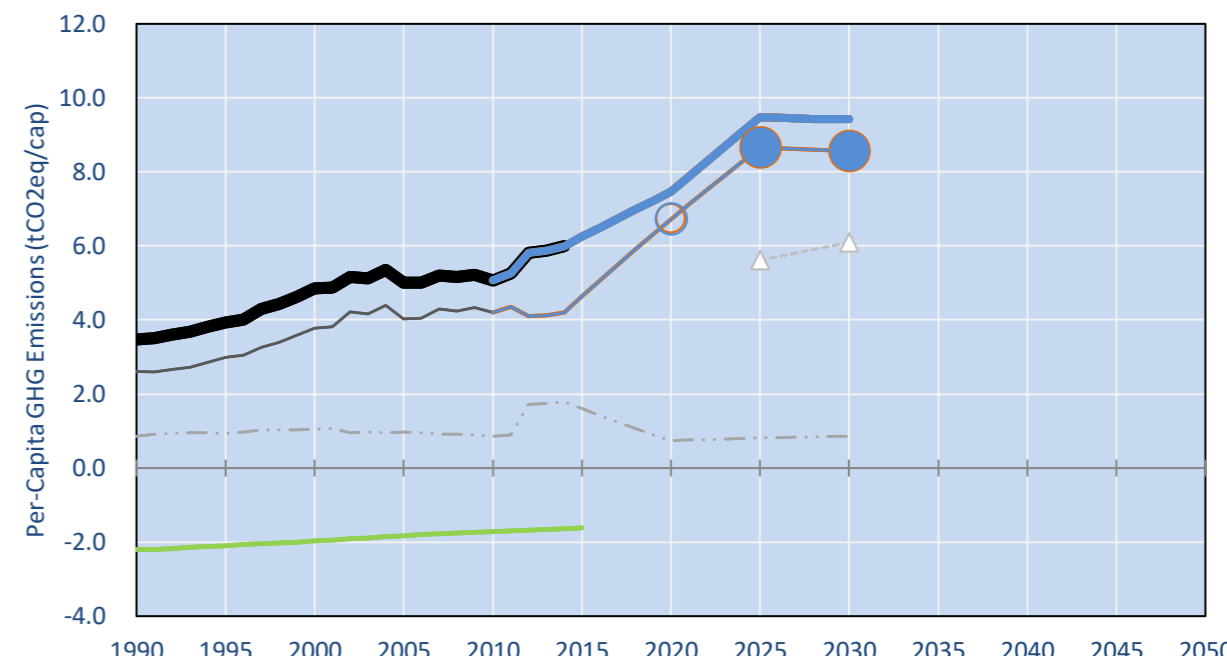
NDC: Emission reductions for CO2 22% below BAU by 2025 and 35% below 2030 BAU. (GWP unclear)

INDC Submitted: 12/12/2015

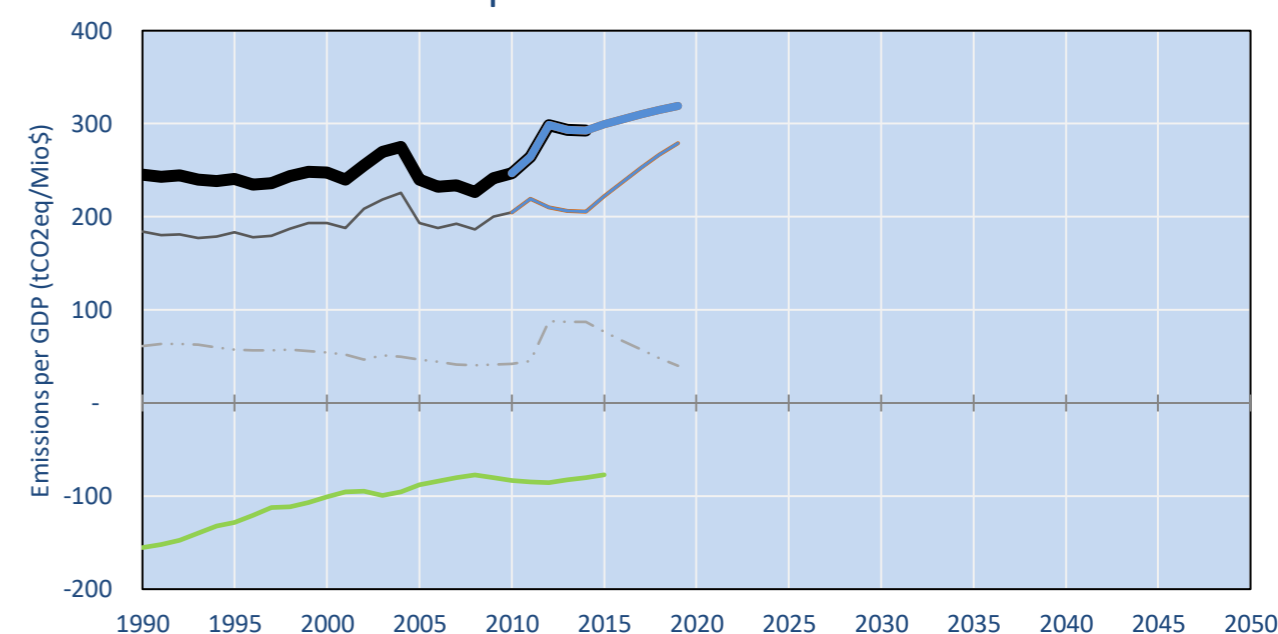
GHG Emissions



Per-Capita Emissions

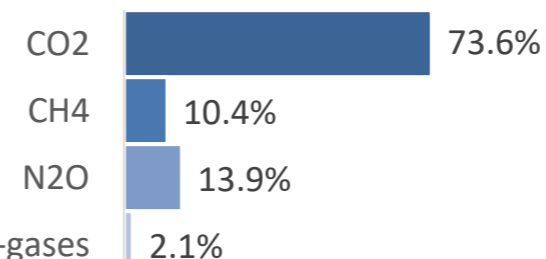


GHG Emissions per GDP

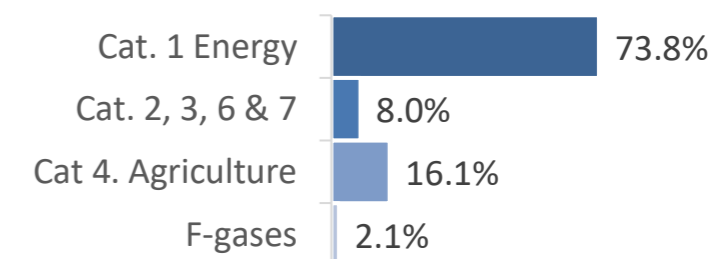


2015 Total GHG Emissions excl. LULUCF

By Gas:



By Sector:



GHG Emissions

	1990	2000	2005	2010	2015	2020		2025		2030	
(MtCO2eq/yr in GWP SAR)						low	high	low	high	low	high
Assumed LULUCF Accounting Credits (-)/Debits (+)											
NDC covered LULUCF Emissions											
NDC covered Emissions excl. LULUCF	0	0	0	0	0	0	0	1	1	1	1
Total GHG excl. LULUCF	0	0	0	0	0	0	0	1	1	1	1
Total GHG incl. LULUCF	0	0	0	0	0	0	0	0	0	1	1

Relative GHG Emissions

	1990	2000	2005	2010	2015	2020		2025		2030	
Total excl. LULUCF						low	high	low	high	low	high
Relative 1990	100%	156%	173%	187%	245%	308%	308%	407%	407%	419%	419%
Relative 2000	64%	100%	111%	120%	157%	198%	198%	262%	262%	269%	269%
Relative 2005	58%	90%	100%	108%	141%	178%	178%	235%	235%	242%	242%
Relative 2010	53%	83%	93%	100%	131%	164%	164%	218%	218%	224%	224%
Relative 2015	41%	64%	71%	76%	100%	126%	126%	166%	166%	171%	171%

Per-Capita Emissions

	1990	2000	2005	2010	2015	2020		2025		2030	
Total excl. LULUCF						low	high	low	high	low	high
Population (Mio)	0	0	0	0	0	0	0	0	0	0	0
Per-Capita Emissions (tCO2eq/cap)	3.5	4.8	5.0	5.1	6.2	7.5	7.5	9.5	9.5	9.4	9.4
Relative 1990	100%	140%	144%	146%	180%	215%	215%	273%	273%	271%	271%
Relative 2000	72%	100%	103%	105%	129%	154%	154%	195%	195%	194%	194%
Relative 2005	69%	97%	100%	101%	125%	149%	149%	189%	189%	188%	188%
Relative 2010	68%	96%	99%	100%	123%	147%	147%	187%	187%	186%	186%
Relative 2015	56%	78%	80%	81%	100%	119%	119%	152%	152%	151%	151%

Data Sources:

Cat1_CO2	PRIMAPHIST17	Cat5A1_CO2	UNFCCC CRF + Nat. Comms.
Cat2367_CO2	PRIMAPHIST17	Cat5A2_CO2	UNFCCC CRF + Nat. Comms.
Cat4_CO2	PRIMAPHIST17	Cat5LtoNonFL_CO2	UNFCCC CRF + Nat. Comms.
Cat5_CO2	PRIMAPHIST17	Cat5GMCMWMM_C	UNFCCC CRF
Cat1_CH4	PRIMAPHIST17	Cat5A1ForestFires	UNFCCC Cat5 + EDGAR(IPCC Database)
Cat2367_CH4	PRIMAPHIST17	Cat5A1HWP_CO2	UNFCCC CRF + Nat. Comms.
Cat4_CH4	PRIMAPHIST17	Cat5bisA_CO2	UNFCCC CRF + NATCOMM.
Cat5_CH4	PRIMAPHIST17	Cat5bisB_CO2	UNFCCC CRF + NATCOMM.
Cat1_N2O	PRIMAPHIST17	Cat5bisC_CO2	UNFCCC CRF + NATCOMM.
Cat2367_N2O	PRIMAPHIST17	Cat5bisD_CO2	UNFCCC CRF + NATCOMM.
Cat4_N2O	PRIMAPHIST17	Cat5bisE_CO2	UNFCCC CRF + NATCOMM.
Cat5_N2O	PRIMAPHIST17	PRO_WM_Cat5_G	UNFCCC Annex I Reports
Cat0_HFCs	PRIMAPHIST17	Metric	GWP SAR
Cat0_PFCs	PRIMAPHIST17		
Cat0_SF6	PRIMAPHIST17		
Population	UN 2015 Population Projections MEDIUM		
GDP	IMF WEO 2015, PPP adjusted GDP, constant 2009 prices...		
	IPCC WG3 Scenario IMAGE AMPERE2-550-FullTech-HST		
	PRIMAPHIST16 description: www.pik-potsdam.de/primap-live/primap-hist/		
	Gratefully acknowledged in particular: PRIMAP, CAIT, CDIAC, EDGAR, IPCC, IEA, UNEP Gap Team, AMPERE Team and comments on earlier versions, in particular by Giacomo Grassi. Errors and misjudgements are our own. Malte Meinshausen & Ryan Alexander; The "Fiji COP23" Edition was enabled through support via the BMUB project UM14 41 4060		
	This Factsheet is available at www.climatecollege.unimelb.edu.au/indc-factsheets. Check out as well: www.climateactiontracker.org, www.mitigation-contributions.org, cait.wri.org, infographics.pbl.nl/indc, live.primap.org, www.unep.org/climatechange/pledgepipeline, and our twitter feed @ClimateCollege		

climatecollege.unimelb.edu.au



Various 'fair' contributions for a global 'least-cost' 2°C path (total incl. LULUCF):

More info on www.mitigation-contributions.org

2025 rel. 2010:

2030 rel. 2010:

LEADER	#N/A	LEADER	#N/A
CDC	#N/A	CDC	#N/A
ECPC50	#N/A	ECPC50	#N/A
ECPC90	#N/A	ECPC90	#N/A
GDR	#N/A	GDR	#N/A
INDC HIGH	178%	INDC HIGH	187%
INDC LOW	178%	INDC LOW	187%

"Fair" contributions for a global 'least-cost' 2°C track:

LEADER	Leader
CDC	Common-but-diff. per-cap. convergence
ECPC50	Eq. cum. Per-capita since 1950
ECPC90	Eq. cum. Per-capita since 1990
GDR	Greenhouse Development Rights
#N/A	No available data