

Philippines

Per-Capita Emissions in 2030 rel. 2015 (excl. LULUCF): **-24%**

INDC 2025

INDC 2030

2015 World Rank

2025 World Rank

2030 World Rank

0% rel. BAU of 95.2 Mt

0% rel. BAU of 114.2 Mt

Share of World Emissions excl. LULUCF (Rank):

0.4% #39

0.3% #42

0.3% #42

-70% rel. BAU of 114.2 Mt

Per-Capita Emissions (tCO₂eq/cap)

1.9t #151

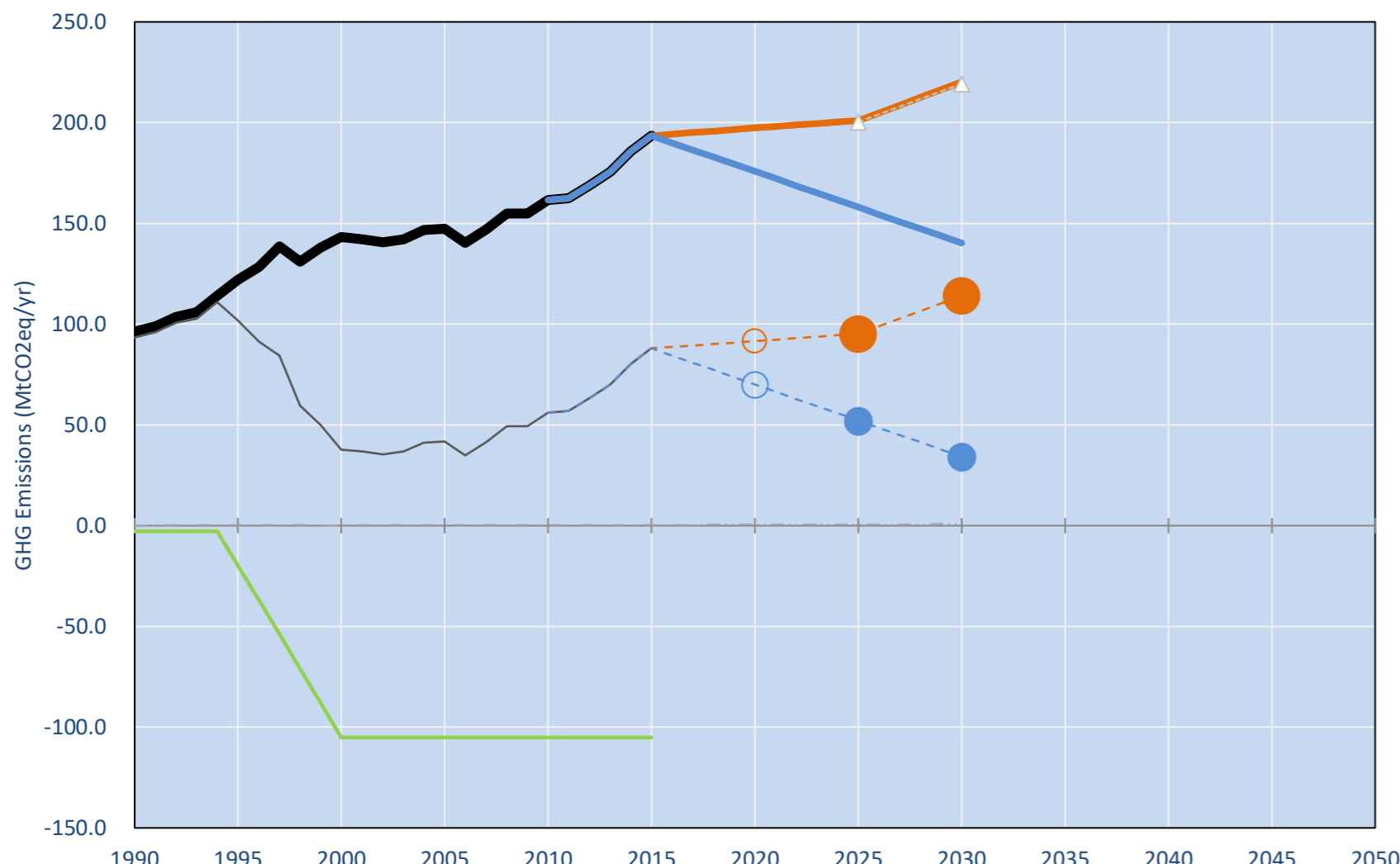
1.5t #166

1.5t #168

INDC: 70% GHG emission reduction relative to BAU by 2030. (2006 IPCC Guidelines)

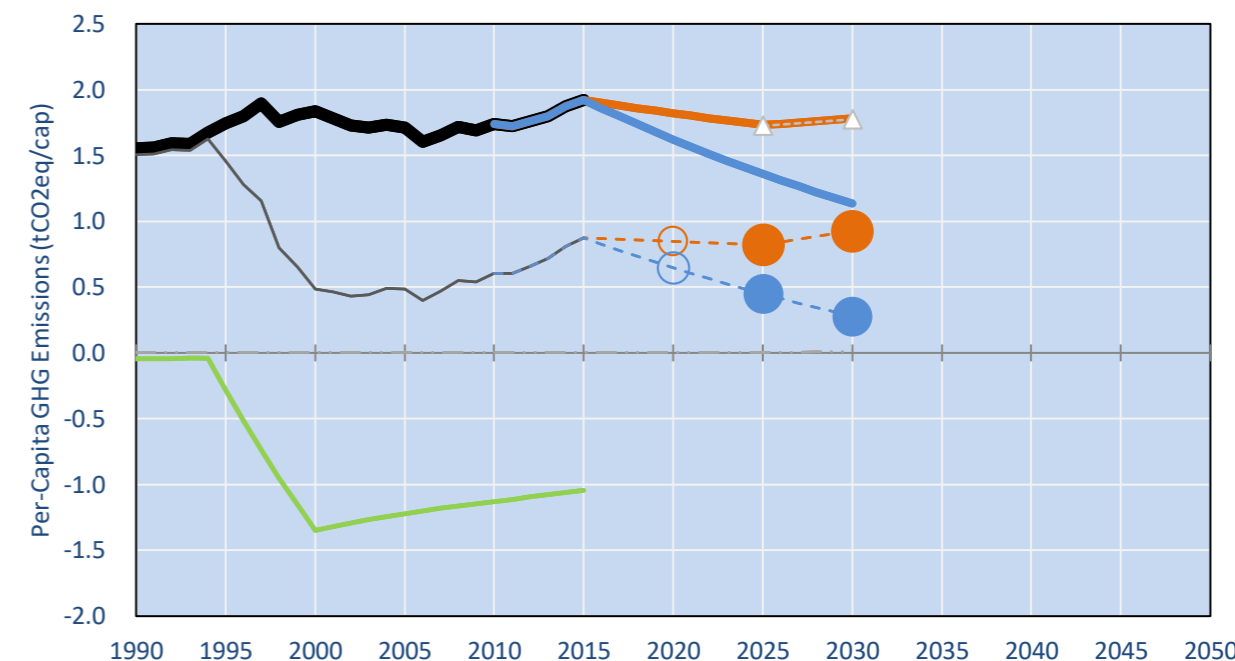
INDC Submitted: 1/10/2015

GHG Emissions

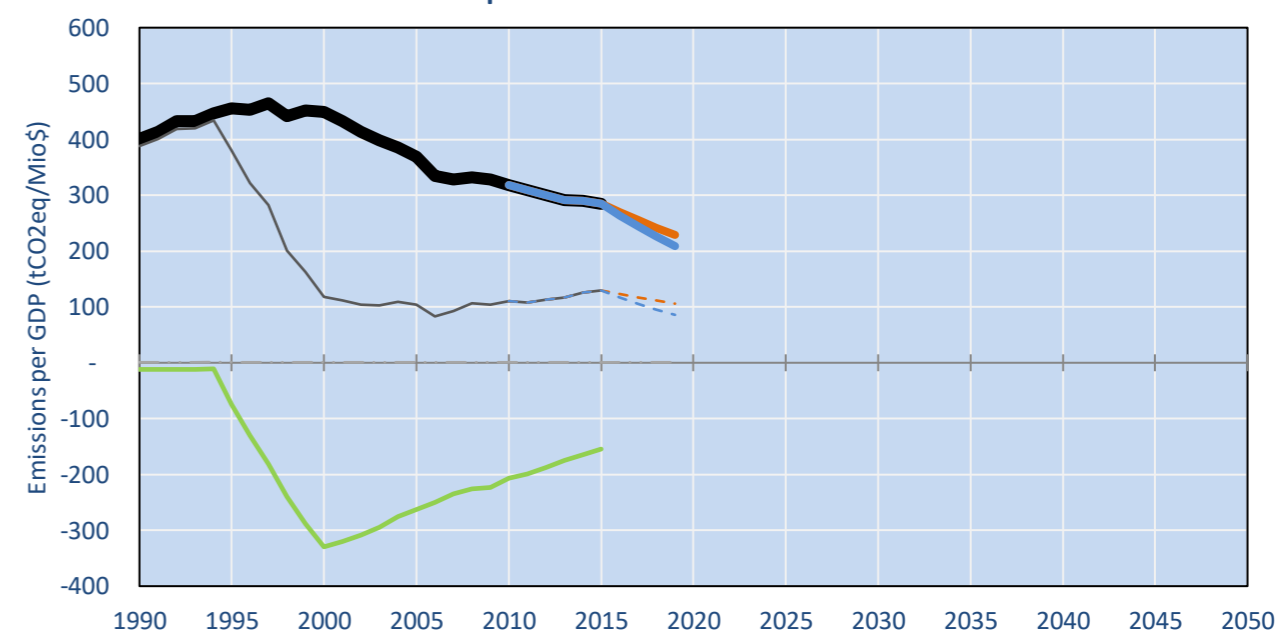


- Reference Total GHG excl. LULUCF
- Historical Covered Emissions, incl. LULUCF, if covered.
- LOW INDC Covered Emissions, incl. LULUCF if covered
- LOW INDC Covered + Non-Covered Emissions, excl. LULUCF
- HIGH INDC Covered Emissions, incl. LULUCF
- HIGH INDC Covered + Non-Covered Emissions, excl. LULUCF
- HIGH Cancun Pledges
- Reference LULUCF Emissions
- LOW INDC Levels
- LOW INDC Covered Emissions, excl. LULUCF
- HIGH INDC Levels
- HIGH INDC Covered Emissions, excl. LULUCF
- LOW Cancun Pledges
- Regional/Gas-specific BAU
- Not-covered GHG excl. LULUCF (Region Projection)

Per-Capita Emissions

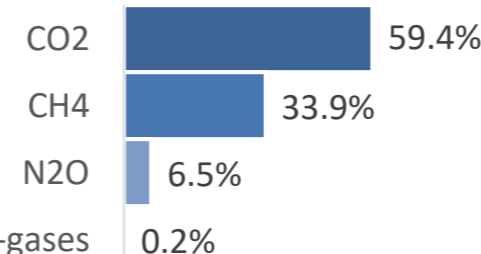


GHG Emissions per GDP

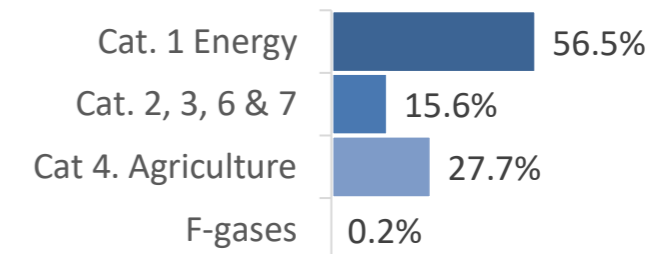


2015 Total GHG Emissions excl. LULUCF

By Gas:



By Sector:



GHG Emissions

	1990	2000	2005	2010	2015	2020		2025		2030	
(MtCO ₂ eq/yr in GWP SAR)						low	high	low	high	low	high
Assumed LULUCF Accounting Credits (-)/Debits (+)											
INDC covered LULUCF Emissions	3	105	105	105	105	105	105	105	105	105	105
INDC covered Emissions excl. LULUCF	96	143	147	161	193	197	175	200	157	219	139
Total GHG excl. LULUCF	96	143	147	162	194	197	176	201	158	220	140
Total GHG incl. LULUCF	94	38	42	56	88	92	71	96	53	115	35

Relative GHG Emissions

	1990	2000	2005	2010	2015	2020		2025		2030	
Total excl. LULUCF						low	high	low	high	low	high
Relative 1990	100%	149%	153%	168%	201%	205%	183%	209%	164%	229%	146%
Relative 2000	67%	100%	103%	113%	135%	138%	123%	140%	110%	154%	98%
Relative 2005	65%	97%	100%	110%	131%	134%	119%	137%	107%	150%	95%
Relative 2010	60%	89%	91%	100%	120%	122%	109%	124%	98%	136%	87%
Relative 2015	50%	74%	76%	84%	100%	102%	91%	104%	82%	114%	72%

Per-Capita Emissions

	1990	2000	2005	2010	2015	2020		2025		2030	
Total excl. LULUCF						low	high	low	high	low	high
Population (Mio)	62	78	86	93	101	108	108	116	116	124	124
Per-Capita Emissions (tCO ₂ eq/cap)	1.6	1.8	1.7	1.7	1.9	1.8	1.6	1.7	1.4	1.8	1.1
Relative 1990	100%	118%	110%	112%	124%	117%	104%	111%	87%	115%	73%
Relative 2000	85%	100%	93%	95%	105%	99%	88%	94%	74%	97%	62%
Relative 2005	91%	107%	100%	102%	112%	106%	95%	101%	80%	104%	66%
Relative 2010	90%	106%	98%	100%	111%	105%	93%	100%	78%	103%	65%
Relative 2015	81%	96%	89%	90%	100%	95%	84%	90%	71%	93%	59%

Data Sources:

Cat1_CO2	PRIMAPHIST17	Cat5A1_CO2	UNFCCC CRF + Nat. Comms.
Cat2367_CO2	PRIMAPHIST17	Cat5A2_CO2	UNFCCC CRF + Nat. Comms.
Cat4_CO2	PRIMAPHIST17	Cat5LtoNonFL_CO2	UNFCCC CRF + Nat. Comms.
Cat5_CO2	PRIMAPHIST17	Cat5GMCMWMM_C	UNFCCC CRF
Cat1_CH4	PRIMAPHIST17	Cat5A1ForestFires	UNFCCC Cat5 + EDGAR(IPCC Database)
Cat2367_CH4	PRIMAPHIST17	Cat5A1HWP_CO2	UNFCCC CRF + Nat. Comms.
Cat4_CH4	PRIMAPHIST17	Cat5bisA_CO2	UNFCCC CRF + NATCOMM.
Cat5_CH4	PRIMAPHIST17	Cat5bisB_CO2	UNFCCC CRF + NATCOMM.
Cat1_N2O	PRIMAPHIST17	Cat5bisC_CO2	UNFCCC CRF + NATCOMM.
Cat2367_N2O	PRIMAPHIST17	Cat5bisD_CO2	UNFCCC CRF + NATCOMM.
Cat4_N2O	PRIMAPHIST17	Cat5bisE_CO2	UNFCCC CRF + NATCOMM.
Cat5_N2O	PRIMAPHIST17	PRO_WM_Cat5_G	UNFCCC Annex I Reports
Cat0_HFCs	PRIMAPHIST17	Metric	GWP SAR
Cat0_PFCs	PRIMAPHIST17		
Cat0_SF6	PRIMAPHIST17		
Population	UN 2015 Population Projections MEDIUM		
GDP	IMF WEO 2015, PPP adjusted GDP, constant 2009 prices...		
	IPCC WG3 Scenario IMAGE AMPERE2-550-FullTech-HST		
	PRIMAPHIST16 description: www.pik-potsdam.de/primap-live/primap-hist/		
	Gratefully acknowledged in particular: PRIMAP, CAIT, CDIAC, EDGAR, IPCC, IEA, UNEP Gap Team, AMPERE Team and comments on earlier versions, in particular by Giacomo Grassi. Errors and misjudgements are our own. Malte Meinshausen & Ryan Alexander; The "Fiji COP23" Edition was enabled through support via the BMUB project UM14 41 4060		
	This Factsheet is available at www.climatecollege.unimelb.edu.au/indc-factsheets. Check out as well: www.climateactiontracker.org, www.mitigation-contributions.org, cait.wri.org, infographics.pbl.nl/indc, live.primap.org, www.unep.org/climatechange/pledgepipeline, and our twitter feed @ClimateCollege		

climatecollege.unimelb.edu.au



Various 'fair' contributions for a global 'least-cost' 2°C path (total incl. LULUCF):

More info on www.mitigation-contributions.org

	2025 rel. 2010:	2030 rel. 2010:		2025 rel. 2010:	2030 rel. 2010:
LEADER	#N/A	LEADER	#N/A	#N/A	
CDC	#N/A	CDC	#N/A	#N/A	
ECPC50	#N/A	ECPC50	#N/A	#N/A	
ECPC90	#N/A	ECPC90	#N/A	#N/A	
GDR	#N/A	GDR	#N/A	#N/A	
INDC HIGH	-6%	INDC HIGH	-38%		
INDC LOW	70%	INDC LOW	104%		

"Fair" contributions for a global 'least-cost' 2°C track:

- LEADER Leader
- CDC Common-but-diff. per-cap. convergence
- ECPC50 Eq. cum. Per-capita since 1950
- ECPC90 Eq. cum. Per-capita since 1990
- GDR Greenhouse Development Rights
- #N/A No available data