

Peru

Per-Capita Emissions in 2030 rel. 2015 (excl. LULUCF): **-45%**

NDC 2025

NDC 2030

2015 World Rank

2025 World Rank

2030 World Rank

-20% rel. BAU of 298.3 Mt

Share of World Emissions excl. LULUCF (Rank):

0.2% #52

0.1% #70

0.1% #80

-30% rel. BAU of 298.3 Mt

Per-Capita Emissions (tCO₂eq/cap)

3.4t #114

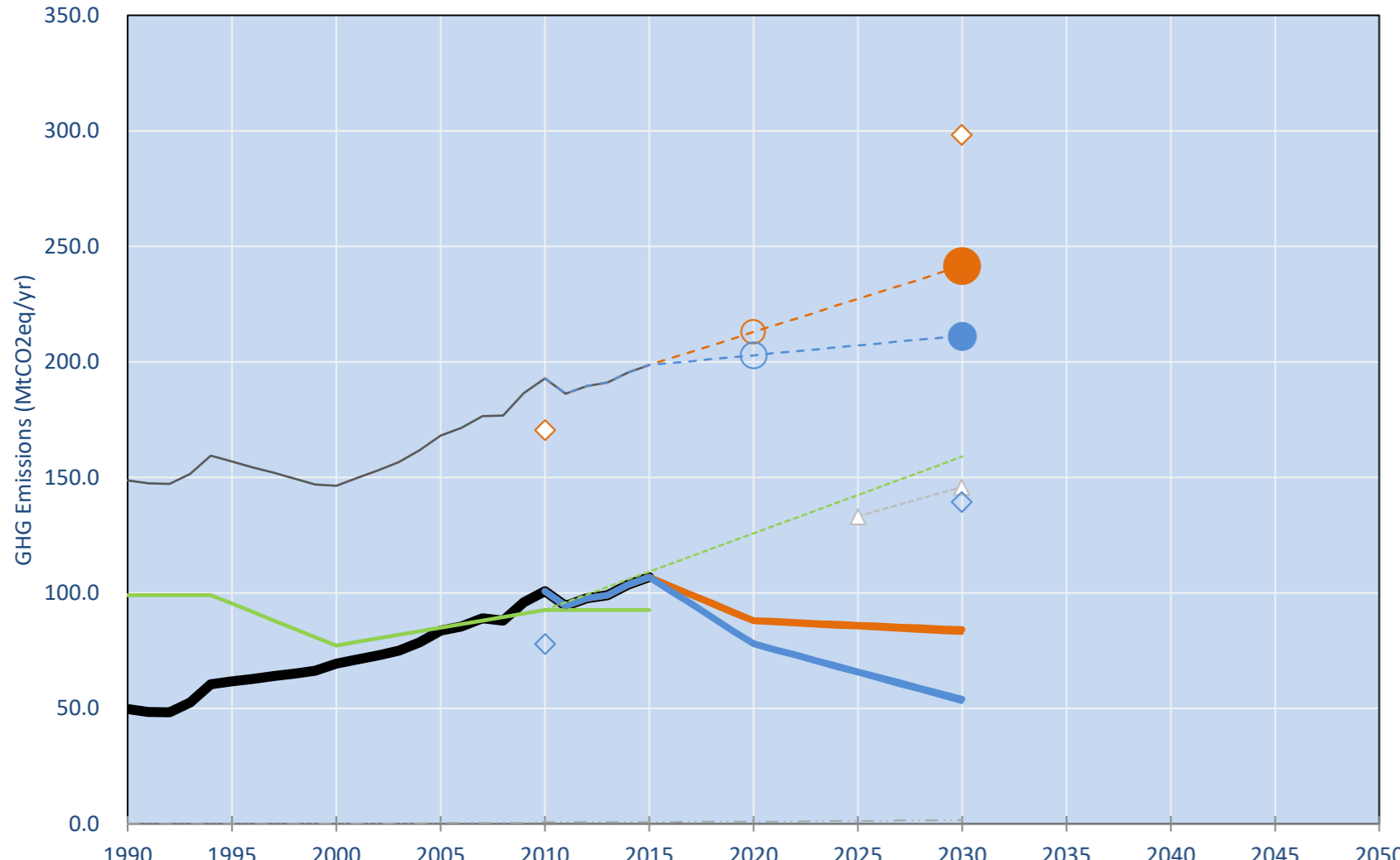
2.2t #152

1.9t #158

NDC: 20% GHG emission reduction compared to BAU by 2030. Additional 10% conditional to international support and favorable conditions. (GWP SAR)

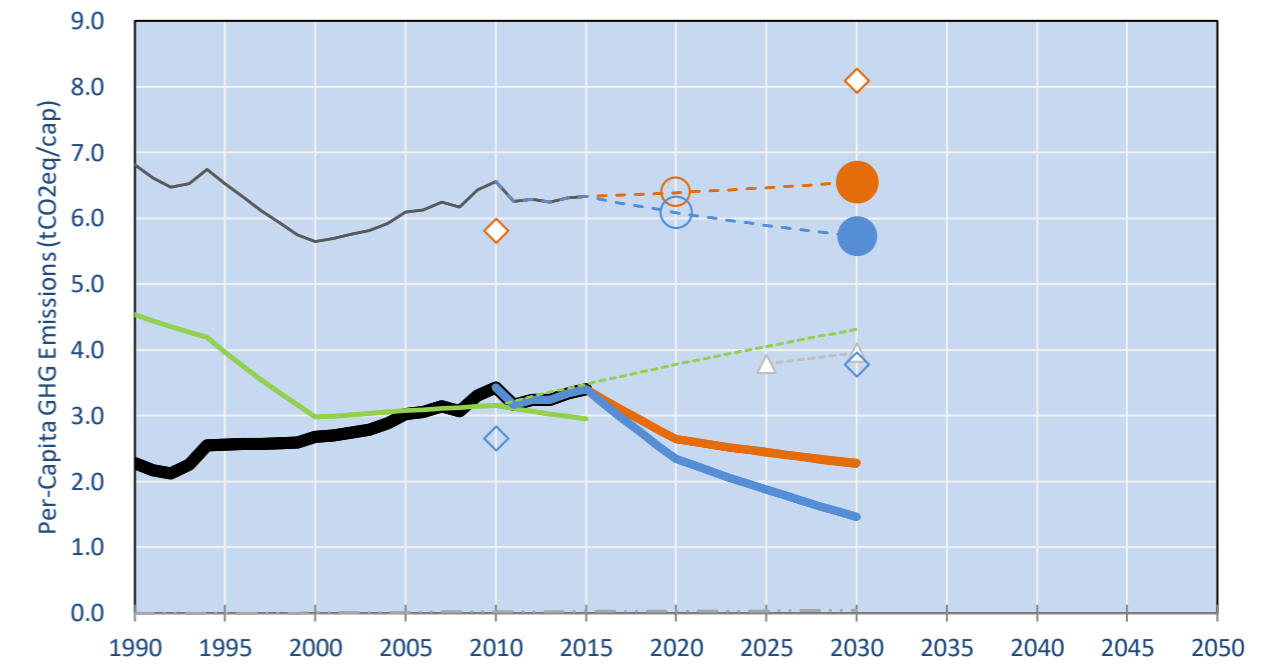
INDC Submitted: 28/09/2015

GHG Emissions

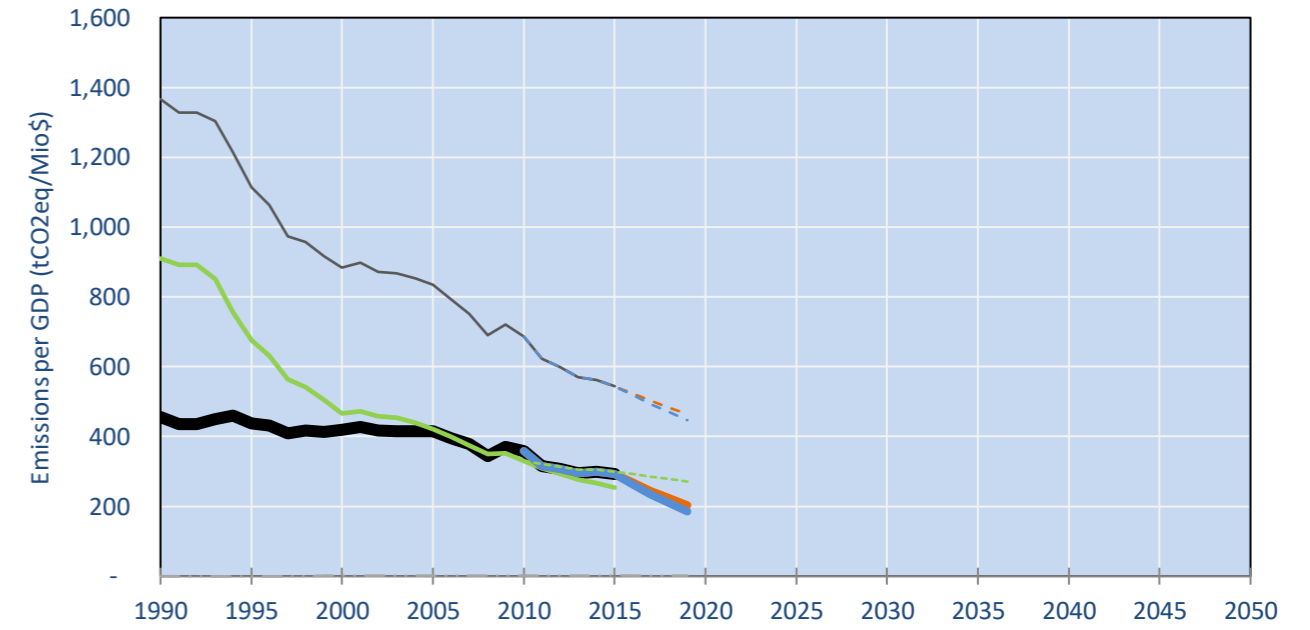


- Reference Total GHG excl. LULUCF
- Historical Covered Emissions, incl. LULUCF, if covered.
- LOW INDC Covered Emissions, incl. LULUCF if covered
- LOW INDC Covered + Non-Covered Emissions, excl. LULUCF
- HIGH INDC Covered Emissions, incl. LULUCF
- HIGH INDC Covered + Non-Covered Emissions, excl. LULUCF
- HIGH Cancun Pledges
- LOW Cancun Pledges
- Reference LULUCF Emissions
- LOW INDC Covered Emissions, excl. LULUCF
- HIGH INDC Covered Emissions, excl. LULUCF
- WM LULUCF Projections
- Peru INDC Total incl. LULUCF GWP SAR
- Regional/Gas-specific BAU
- Not-covered GHG excl. LULUCF (Region Projection)

Per-Capita Emissions

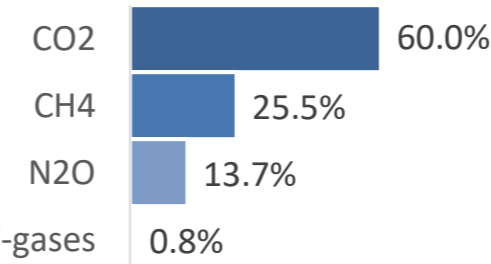


GHG Emissions per GDP

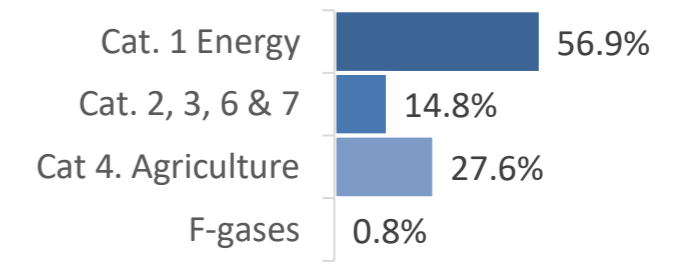


2015 Total GHG Emissions excl. LULUCF

By Gas:



By Sector:



GHG Emissions

	1990	2000	2005	2010	2015	2020		2025		2030	
(MtCO ₂ eq/yr in GWP AR4)						low	high	low	high	low	high
Assumed LULUCF Accounting Credits (-)/Debits (+)											
NDC covered LULUCF Emissions	99	77	85	93	93	126	126	142	142	159	159
NDC covered Emissions excl. LULUCF	50	69	83	100	106	87	77	85	65	82	52
Total GHG excl. LULUCF	50	69	84	101	107	88	78	86	66	84	54
Total GHG incl. LULUCF	149	146	168	193	199	214	204	228	208	243	213

Relative GHG Emissions

	1990	2000	2005	2010	2015	2020		2025		2030	
Total excl. LULUCF						low	high	low	high	low	high
Relative 1990	100%	140%	168%	203%	215%	177%	157%	173%	133%	169%	109%
Relative 2000	72%	100%	121%	145%	154%	127%	112%	124%	95%	121%	78%
Relative 2005	59%	83%	100%	120%	128%	105%	93%	103%	79%	101%	65%
Relative 2010	49%	69%	83%	100%	106%	87%	77%	85%	65%	84%	54%
Relative 2015	47%	65%	78%	94%	100%	82%	73%	81%	62%	79%	51%

Per-Capita Emissions

	1990	2000	2005	2010	2015	2020		2025		2030	
Total excl. LULUCF						low	high	low	high	low	high
Population (Mio)	22	26	28	29	31	33	33	35	35	37	37
Per-Capita Emissions (tCO ₂ eq/cap)	2.3	2.7	3.0	3.4	3.4	2.6	2.3	2.4	1.9	2.3	1.5
Relative 1990	100%	118%	133%	151%	150%	116%	103%	108%	82%	100%	64%
Relative 2000	85%	100%	113%	128%	127%	99%	87%	91%	70%	85%	55%
Relative 2005	75%	88%	100%	113%	112%	87%	77%	81%	62%	75%	48%
Relative 2010	66%	78%	88%	100%	99%	77%	68%	71%	55%	67%	43%
Relative 2015	67%	79%	89%	101%	100%	78%	69%	72%	55%	67%	43%

Data Sources:

Cat1_CO2	PRIMAPHIST17	Cat5A1_CO2	UNFCCC CRF + Nat. Comms.
Cat2367_CO2	PRIMAPHIST17	Cat5A2_CO2	UNFCCC CRF + Nat. Comms.
Cat4_CO2	PRIMAPHIST17	Cat5LtoNonFL_CO2	UNFCCC CRF + Nat. Comms.
Cat5_CO2	PRIMAPHIST17	Cat5GMCMWMM_C	UNFCCC CRF
Cat1_CH4	PRIMAPHIST17	Cat5A1ForestFires	UNFCCC Cat5 + EDGAR(IPCC Database)
Cat2367_CH4	PRIMAPHIST17	Cat5A1HWP_CO2	UNFCCC CRF + Nat. Comms.
Cat4_CH4	PRIMAPHIST17	Cat5bisA_CO2	UNFCCC CRF + NATCOMM.
Cat5_CH4	PRIMAPHIST17	Cat5bisB_CO2	UNFCCC CRF + NATCOMM.
Cat1_N2O	PRIMAPHIST17	Cat5bisC_CO2	UNFCCC CRF + NATCOMM.
Cat2367_N2O	PRIMAPHIST17	Cat5bisD_CO2	UNFCCC CRF + NATCOMM.
Cat4_N2O	PRIMAPHIST17	Cat5bisE_CO2	COUNTRY-SPECIFIC USER DATA
Cat5_N2O	PRIMAPHIST17	PRO_WM_Cat5_G	COUNTRY-SPECIFIC USER DATA
Cat0_HFCs	PRIMAPHIST17	Metric	GWP AR4
Cat0_PFCs	PRIMAPHIST17		
Cat0_SF6	PRIMAPHIST17		
Population	UN 2015 Population Projections MEDIUM		
GDP	IMF WEO 2015, PPP adjusted GDP, constant 2009 prices...		
IPCC WG3 Scenario	IMAGE AMPERE2-550-FullTech-HST		
PRIMAPHIST16 description:	www.pik-potsdam.de/primap-live/primap-hist/		
Gratefully acknowledged in particular: PRIMAP, CAIT, CDIAC, EDGAR, IPCC, IEA, UNEP Gap Team, AMPERE Team and comments on earlier versions, in particular by Giacomo Grassi. Errors and misjudgements are our own. Malte Meinshausen & Ryan Alexander; The "Fiji COP23" Edition was enabled through support via the BMUB project UM14 41 4060			
This Factsheet is available at www.climatecollege.unimelb.edu.au/indc-factsheets . Check out as well: www.climateactiontracker.org , www.mitigation-contributions.org , cait.wri.org , infographics.pbl.nl/indc/ , live.primap.org , www.unep.org/climatechange/pledgepipeline , and our twitter feed @ClimateCollege			
climatecollege.unimelb.edu.au			

Meinshausen, Alexander et al., www.climatecollege.unimelb.edu.au/indc-factsheets, The University of Melbourne



Various 'fair' contributions for a global 'least-cost' 2°C path (total incl. LULUCF):

	2025 rel. 2010:	2030 rel. 2010:		2025 rel. 2010:	2030 rel. 2010:
LEADER	#N/A	LEADER	#N/A	#N/A	#N/A
CDC	#N/A	CDC	#N/A	#N/A	#N/A
ECPC50	#N/A	ECPC50	#N/A	#N/A	#N/A
ECPC90	#N/A	ECPC90	#N/A	#N/A	#N/A
GDR	#N/A	GDR	#N/A	#N/A	#N/A
INDC HIGH	8%	INDC HIGH	10%	INDC HIGH	10%
INDC LOW	18%	INDC LOW	26%	INDC LOW	26%

More info on www.mitigation-contributions.org

"Fair" contributions for a global 'least-cost' 2°C track:

LEADER	Leader
CDC	Common-but-diff. per-cap. convergence
ECPC50	Eq. cum. Per-capita since 1950
ECPC90	Eq. cum. Per-capita since 1990
GDR	Greenhouse Development Rights
#N/A	No available data