

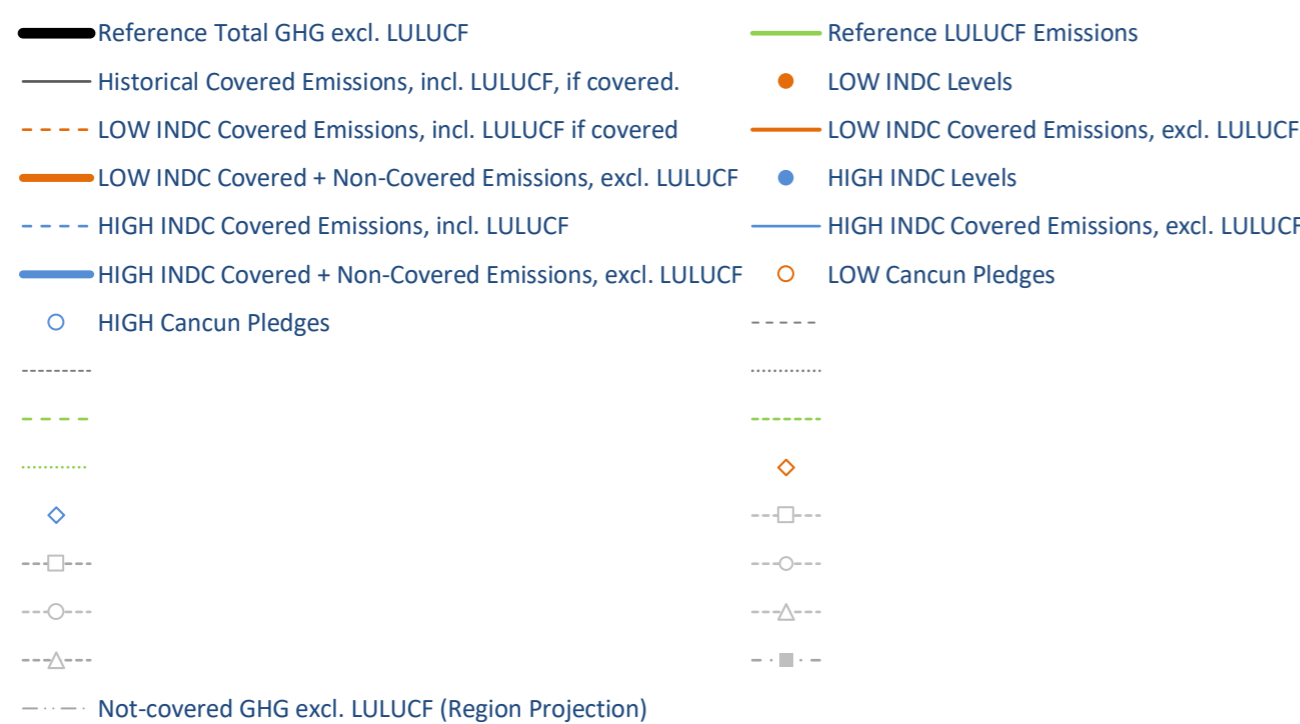
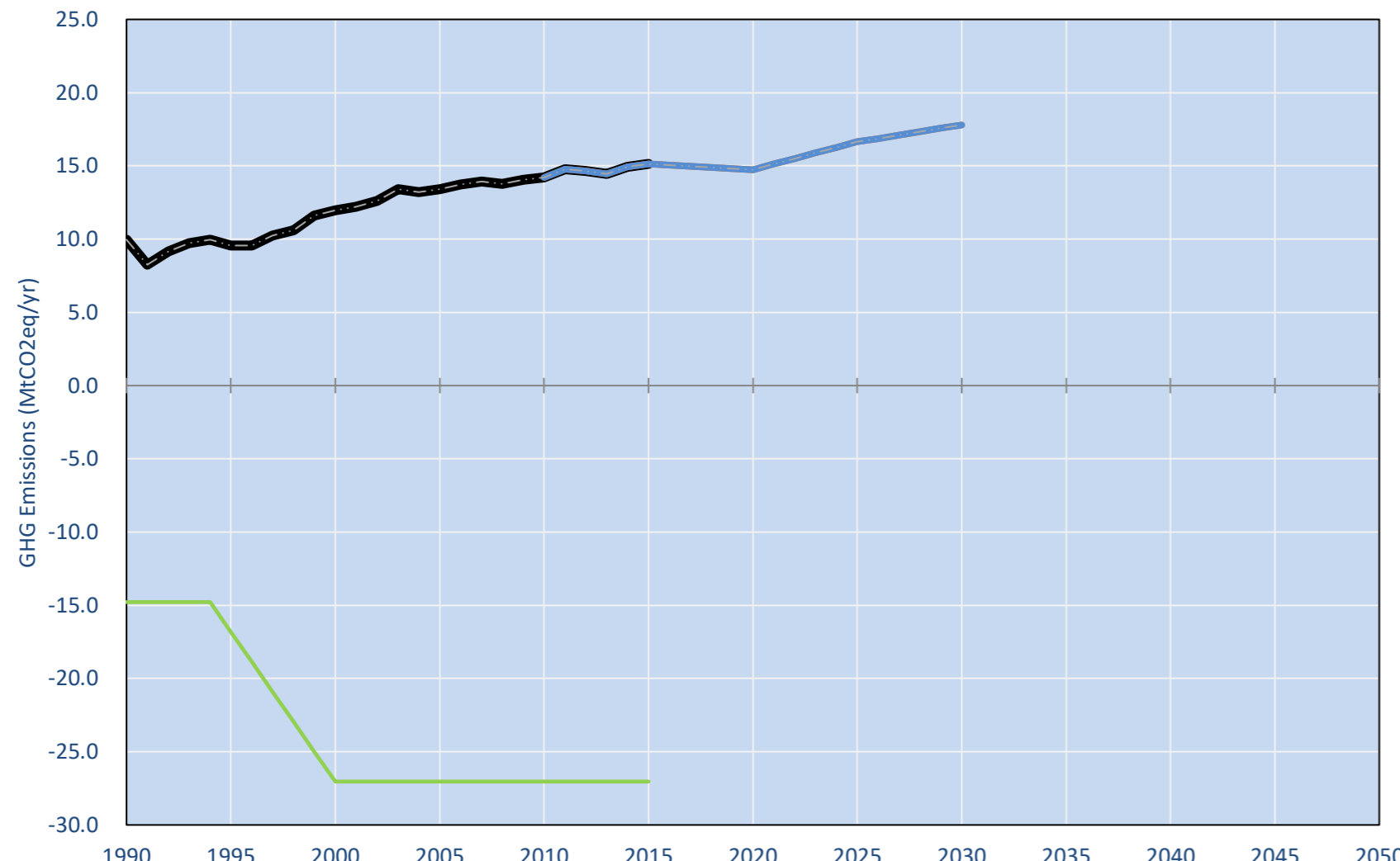
Nicaragua

Per-Capita Emissions in 2030 rel. 2015 (excl. LULUCF): **+2%**

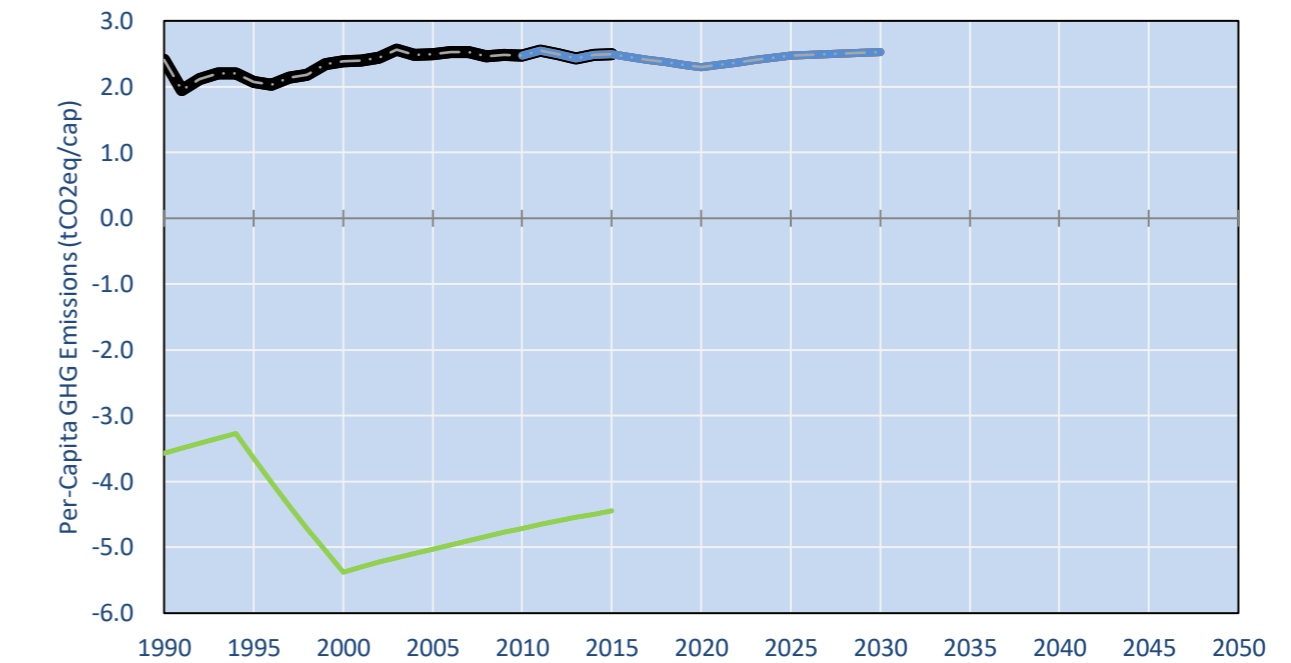
	2015 World Rank	2025 World Rank	2030 World Rank
Share of World Emissions excl. LULUCF (Rank):	0.0% #127	0.0% #130	0.0% #130
Per-Capita Emissions (tCO2eq/cap)	2.5t #134	2.5t #135	2.5t #134

INDC Submitted: NOT YET

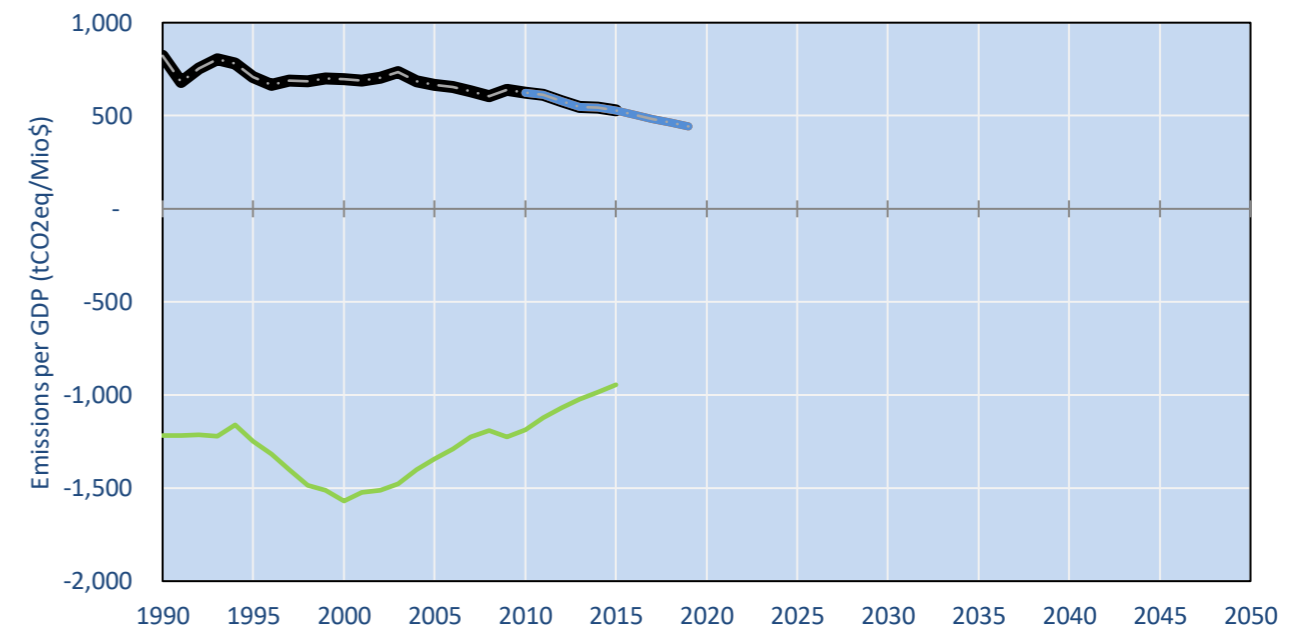
GHG Emissions



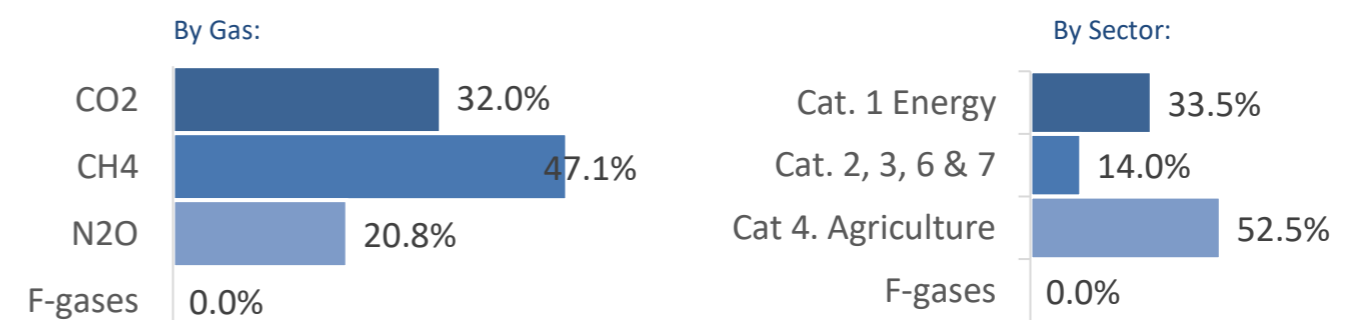
Per-Capita Emissions



GHG Emissions per GDP



2015 Total GHG Emissions excl. LULUCF



GHG Emissions

	1990	2000	2005	2010	2015	2020		2025		2030	
						low	high	low	high	low	high
(MtCO2eq/yr in GWP SAR)											
Assumed LULUCF Accounting Credits (-)/Debits (+)											
NDC/INDC covered LULUCF Emissions	-	-	-	-	-	-	-	-	-	-	-
NDC/INDC covered Emissions excl. LULUCF	-	-	-	-	-	-	-	-	-	-	-
Total GHG excl. LULUCF	10	12	13	14	15	15	15	17	17	18	18
Total GHG incl. LULUCF	5	15	14	13	12	12	12	10	10	9	9

Relative GHG Emissions

	1990	2000	2005	2010	2015	2020		2025		2030	
						low	high	low	high	low	high
Total excl. LULUCF											
Relative 1990	100%	120%	134%	142%	152%	148%	148%	167%	167%	178%	178%
Relative 2000	83%	100%	112%	119%	126%	123%	123%	139%	139%	148%	148%
Relative 2005	74%	89%	100%	106%	113%	110%	110%	124%	124%	133%	133%
Relative 2010	70%	84%	94%	100%	107%	104%	104%	117%	117%	125%	125%
Relative 2015	66%	79%	89%	94%	100%	97%	97%	110%	110%	118%	118%

Per-Capita Emissions

	1990	2000	2005	2010	2015	2020		2025		2030	
						low	high	low	high	low	high
Total excl. LULUCF											
Population (Mio)	4	5	5	6	6	6	6	7	7	7	7
Per-Capita Emissions (tCO2eq/cap)	2.4	2.4	2.5	2.5	2.5	2.3	2.3	2.5	2.5	2.5	2.5
Relative 1990	100%	99%	103%	103%	103%	95%	95%	103%	103%	105%	105%
Relative 2000	101%	100%	105%	104%	104%	96%	96%	104%	104%	106%	106%
Relative 2005	97%	96%	100%	99%	100%	92%	92%	99%	99%	102%	102%
Relative 2010	97%	96%	101%	100%	101%	93%	93%	100%	100%	102%	102%
Relative 2015	97%	96%	100%	99%	100%	92%	92%	99%	99%	102%	102%

Data Sources:

Cat1_CO2	PRIMAPHIST17	Cat5A1_CO2	UNFCCC CRF + Nat. Comms.
Cat2367_CO2	PRIMAPHIST17	Cat5A2_CO2	UNFCCC CRF + Nat. Comms.
Cat4_CO2	PRIMAPHIST17	Cat5LtoNonFL_CO2	UNFCCC CRF + Nat. Comms.
Cat5_CO2	PRIMAPHIST17	Cat5GCMCMWM_C	UNFCCC CRF
Cat1_CH4	PRIMAPHIST17	Cat5A1ForestFires	UNFCCC Cat5 + EDGAR(IPCC Database)
Cat2367_CH4	PRIMAPHIST17	Cat5A1HWP_CO2	UNFCCC CRF + Nat. Comms.
Cat4_CH4	PRIMAPHIST17	Cat5bisA_CO2	UNFCCC CRF + NATCOMM.
Cat5_CH4	PRIMAPHIST17	Cat5bisB_CO2	UNFCCC CRF + NATCOMM.
Cat1_N2O	PRIMAPHIST17	Cat5bisC_CO2	UNFCCC CRF + NATCOMM.
Cat2367_N2O	PRIMAPHIST17	Cat5bisD_CO2	UNFCCC CRF + NATCOMM.
Cat4_N2O	PRIMAPHIST17	Cat5bisE_CO2	UNFCCC CRF + NATCOMM.
Cat5_N2O	PRIMAPHIST17	PRO_WM_Cat5_G	UNFCCC Annex I Reports
Cat0_HFCs	PRIMAPHIST17	Metric	GWP SAR
Cat0_PFCs	PRIMAPHIST17		
Cat0_SF6	PRIMAPHIST17		
Population	UN 2015 Population Projections MEDIUM		
GDP	IMF WEO 2015, PPP adjusted GDP, constant 2009 prices...		
IPCC WG3 Scenario	IMAGE AMPERE2-550-FullTech-HST		
PRIMAPHIST16 description:	www.pik-potsdam.de/primap-live/primap-hist/		
Gratefully acknowledged in particular: PRIMAP, CAIT, CDIAC, EDGAR, IPCC, IEA, UNEP Gap Team, AMPERE Team and comments on earlier versions, in particular by Giacomo Grassi. Errors and misjudgements are our own. Malte Meinshausen & Ryan Alexander; The "Fiji COP23" Edition was enabled through support via the BMUB project UM14 41 4060			
This Factsheet is available at www.climatecollege.unimelb.edu.au/indc-factsheets . Check out as well: www.climateactiontracker.org , www.mitigation-contributions.org , cait.wri.org , infographics.pbl.nl/indc/ , live.primap.org , www.unep.org/climatechange/pledgepipeline , and our twitter feed @ClimateCollege			



Various 'fair' contributions for a global 'least-cost' 2°C path (total incl. LULUCF):

2025 rel. 2010:	2030 rel. 2010:
LEADER	#N/A
CDC	#N/A
ECPC50	#N/A
ECPC90	#N/A
GDR	#N/A
INDC HIGH	#N/A
INDC LOW	#N/A

More info on www.mitigation-contributions.org

No results shown, as 2010 total incl. LULUCF emissions below zero
"Fair" contributions for a global 'least-cost' 2°C track:
LEADER Leader
CDC Common-but-diff. per-cap. convergence
ECPC50 Eq. cum. Per-capita since 1950
ECPC90 Eq. cum. Per-capita since 1990
GDR Greenhouse Development Rights
#N/A No available data