

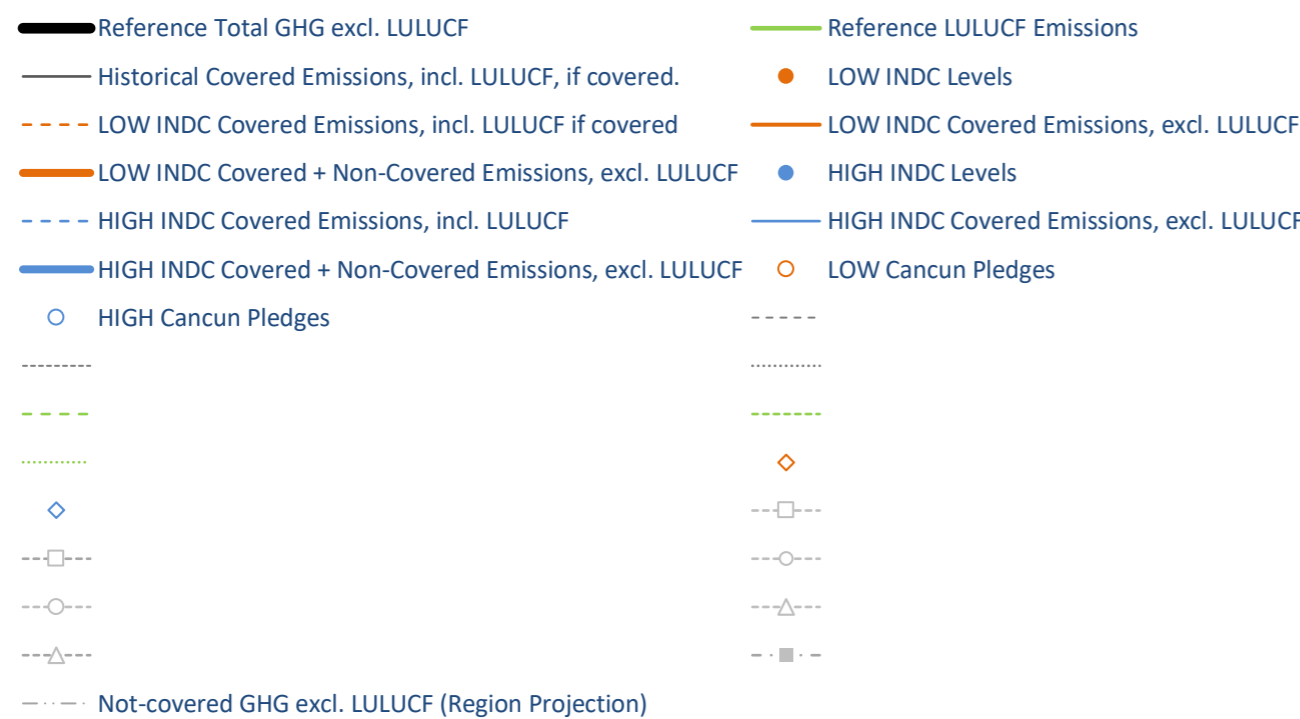
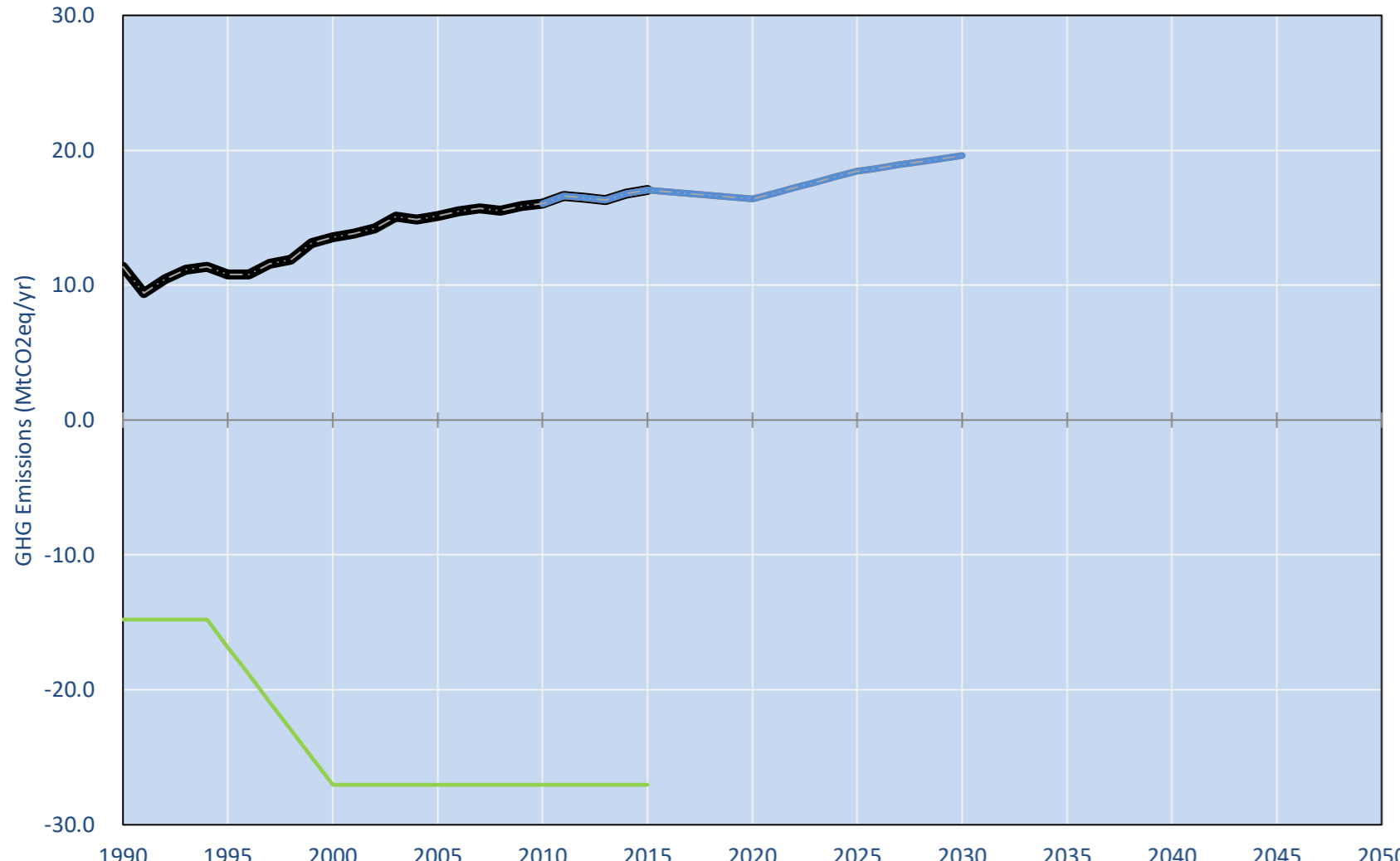
# Nicaragua

Per-Capita Emissions in 2030 rel. 2015 (excl. LULUCF): **-1%**

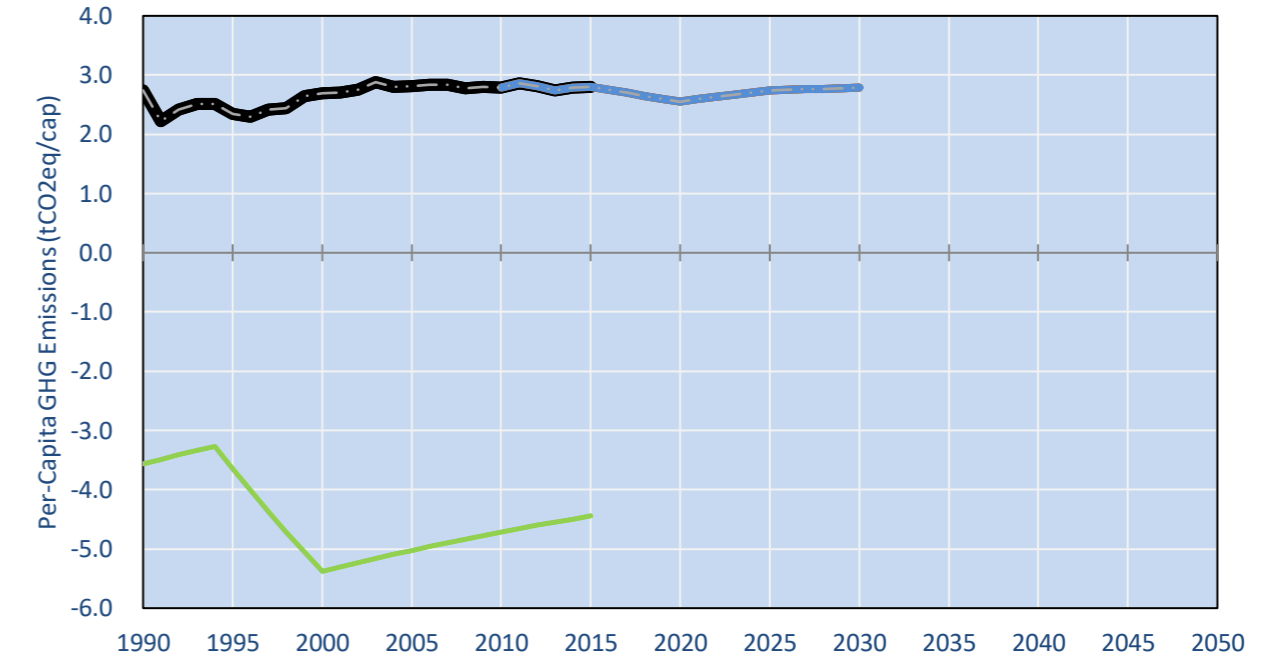
	2015 World Rank	2025 World Rank	2030 World Rank
Share of World Emissions excl. LULUCF (Rank):	0.0% #124	0.0% #125	0.0% #128
Per-Capita Emissions (tCO2eq/cap)	2.8t #132	2.7t #136	2.8t #132

INDC Submitted: NOT YET

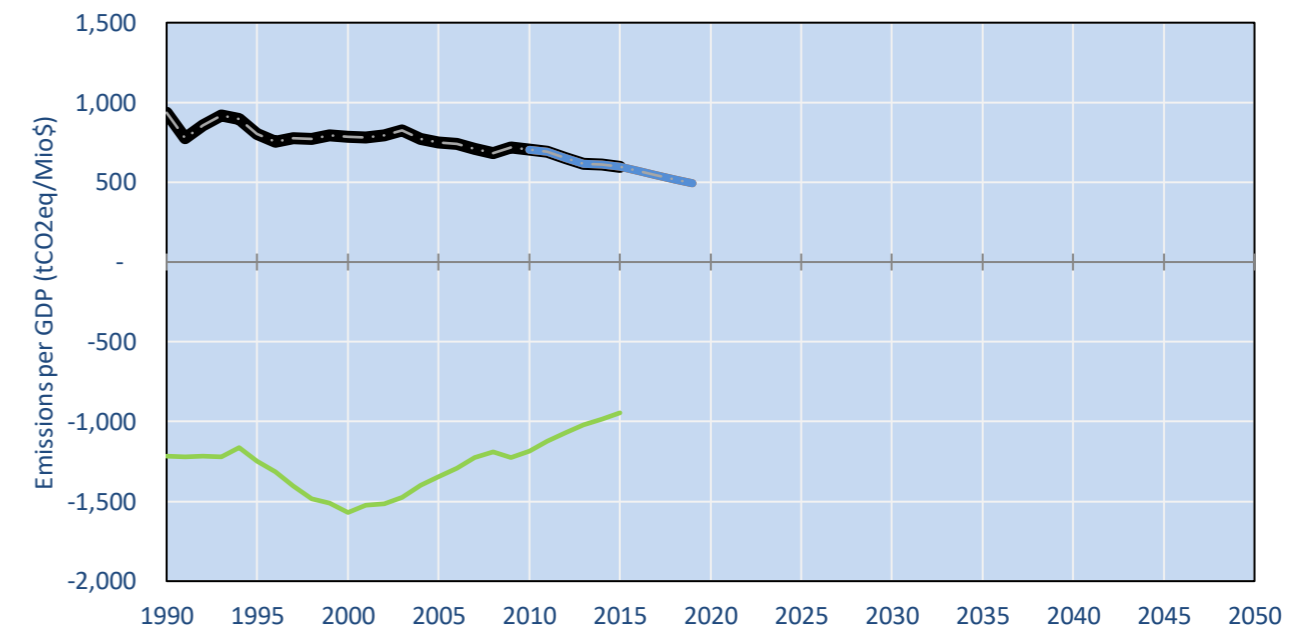
## GHG Emissions



## Per-Capita Emissions



## GHG Emissions per GDP



### 2015 Total GHG Emissions excl. LULUCF

By Gas:	By Sector:
CO2: 28.4%	Cat. 1 Energy: 30.5%
CH4: 55.8%	Cat. 2, 3, 6 & 7: 14.9%
N2O: 15.8%	Cat. 4. Agriculture: 54.6%
F-gases: 0.0%	F-gases: 0.0%

## GHG Emissions

	1990	2000	2005	2010	2015	2020	2025	2030	
(MtCO2eq/yr in GWP AR5)						low	high	low	high
Assumed LULUCF Accounting Credits (-)/Debits (+)									
NDC/INDC covered LULUCF Emissions	-	-	-	-	-	-	-	-	-
NDC/INDC covered Emissions excl. LULUCF	-	-	-	-	-	-	-	-	-
Total GHG excl. LULUCF	11	14	15	16	17	16	16	18	18
Total GHG incl. LULUCF	3	13	12	11	10	11	11	9	9

## Relative GHG Emissions

	1990	2000	2005	2010	2015	2020	2025	2030	
Total excl. LULUCF						low	high	low	high
Relative 1990	100%	119%	133%	141%	150%	144%	144%	162%	162%
Relative 2000	84%	100%	111%	118%	126%	121%	121%	136%	136%
Relative 2005	75%	90%	100%	106%	113%	108%	108%	122%	122%
Relative 2010	71%	85%	94%	100%	106%	102%	102%	115%	115%
Relative 2015	67%	79%	89%	94%	100%	96%	96%	108%	108%

## Per-Capita Emissions

	1990	2000	2005	2010	2015	2020	2025	2030	
Total excl. LULUCF						low	high	low	high
Population (Mio)	4	5	5	6	6	6	6	7	7
Per-Capita Emissions (tCO2eq/cap)	2.7	2.7	2.8	2.8	2.8	2.6	2.6	2.7	2.7
Relative 1990	100%	98%	102%	102%	102%	93%	93%	100%	100%
Relative 2000	102%	100%	104%	104%	104%	95%	95%	102%	102%
Relative 2005	98%	96%	100%	99%	99%	91%	91%	98%	98%
Relative 2010	98%	97%	101%	100%	100%	91%	91%	98%	98%
Relative 2015	98%	96%	100%	100%	100%	91%	91%	98%	98%

## Data Sources:

Cat1_CO2	PRIMAPHIST17	Cat5A1_CO2	UNFCCC CRF + Nat. Comms.
Cat2367_CO2	PRIMAPHIST17	Cat5A2_CO2	UNFCCC CRF + Nat. Comms.
Cat4_CO2	PRIMAPHIST17	Cat5LtoNonFL_CO2	UNFCCC CRF + Nat. Comms.
Cat5_CO2	PRIMAPHIST17	Cat5GCMCMWM_C	UNFCCC CRF
Cat1_CH4	PRIMAPHIST17	Cat5A1ForestFires	UNFCCC Cat5 + EDGAR(IPCC Database)
Cat2367_CH4	PRIMAPHIST17	Cat5A1HWP_CO2	UNFCCC CRF + Nat. Comms.
Cat4_CH4	PRIMAPHIST17	Cat5bisA_CO2	UNFCCC CRF + NATCOMM.
Cat5_CH4	PRIMAPHIST17	Cat5bisB_CO2	UNFCCC CRF + NATCOMM.
Cat1_N2O	PRIMAPHIST17	Cat5bisC_CO2	UNFCCC CRF + NATCOMM.
Cat2367_N2O	PRIMAPHIST17	Cat5bisD_CO2	UNFCCC CRF + NATCOMM.
Cat4_N2O	PRIMAPHIST17	Cat5bisE_CO2	UNFCCC CRF + NATCOMM.
Cat5_N2O	PRIMAPHIST17	PRO_WM_Cat5_G	UNFCCC Annex I Reports
Cat0_HFCs	PRIMAPHIST17	Metric	GWP AR5
Cat0_PFCs	PRIMAPHIST17		
Cat0_SF6	PRIMAPHIST17		
Population	UN 2015 Population Projections MEDIUM		
GDP	IMF WEO 2015, PPP adjusted GDP, constant 2009 prices...		
IPCC WG3 Scenario	IMAGE   AMPERE2-550-FullTech-HST		
PRIMAPHIST16 description:	www.pik-potsdam.de/primap-live/primap-hist/		
Gratefully acknowledged in particular:	PRIMAP, CAIT, CDIAC, EDGAR, IPCC, IEA, UNEP Gap Team, AMPERE Team and comments on earlier versions, in particular by Giacomo Grassi. Errors and misjudgements are our own. Malte Meinshausen & Ryan Alexander; The "Fiji COP23" Edition was enabled through support via the BMUB project UM14 41 4060		
This Factsheet is available at	www.climatecollege.unimelb.edu.au/indc-factsheets. Check out as well: www.climateactiontracker.org, www.mitigation-contributions.org, cait.wri.org, infographics.pbl.nl/indc, live.primap.org, www.unep.org/climatechange/pledgepipeline, and our twitter feed @ClimateCollege		



## Various 'fair' contributions for a global 'least-cost' 2°C path (total incl. LULUCF):

2025 rel. 2010:	2030 rel. 2010:
LEADER	#N/A
CDC	#N/A
ECPC50	#N/A
ECPC90	#N/A
GDR	#N/A
INDC HIGH	#N/A
INDC LOW	#N/A

## More info on www.mitigation-contributions.org

No results shown, as 2010 total incl. LULUCF emissions below zero  
"Fair" contributions for a global 'least-cost' 2°C track:  
LEADER Leader  
CDC Common-but-diff. per-cap. convergence  
ECPC50 Eq. cum. Per-capita since 1950  
ECPC90 Eq. cum. Per-capita since 1990  
GDR Greenhouse Development Rights  
#N/A No available data