

Shown: 2025 & 2030: Min/max of unconditional and conditional targets

Paris Agreement ratified on: 05/10/2016

New Zealand

Per-Capita Emissions in 2030 rel. 2015 (excl. LULUCF): **-21%**

NDC 2025

NDC 2030

2015 World Rank

2025 World Rank

2030 World Rank

Share of World Emissions excl. LULUCF (Rank):

0.2% #68

0.1% #72

0.1% #77

Per-Capita Emissions (tCO2eq/cap)

17.5t #16

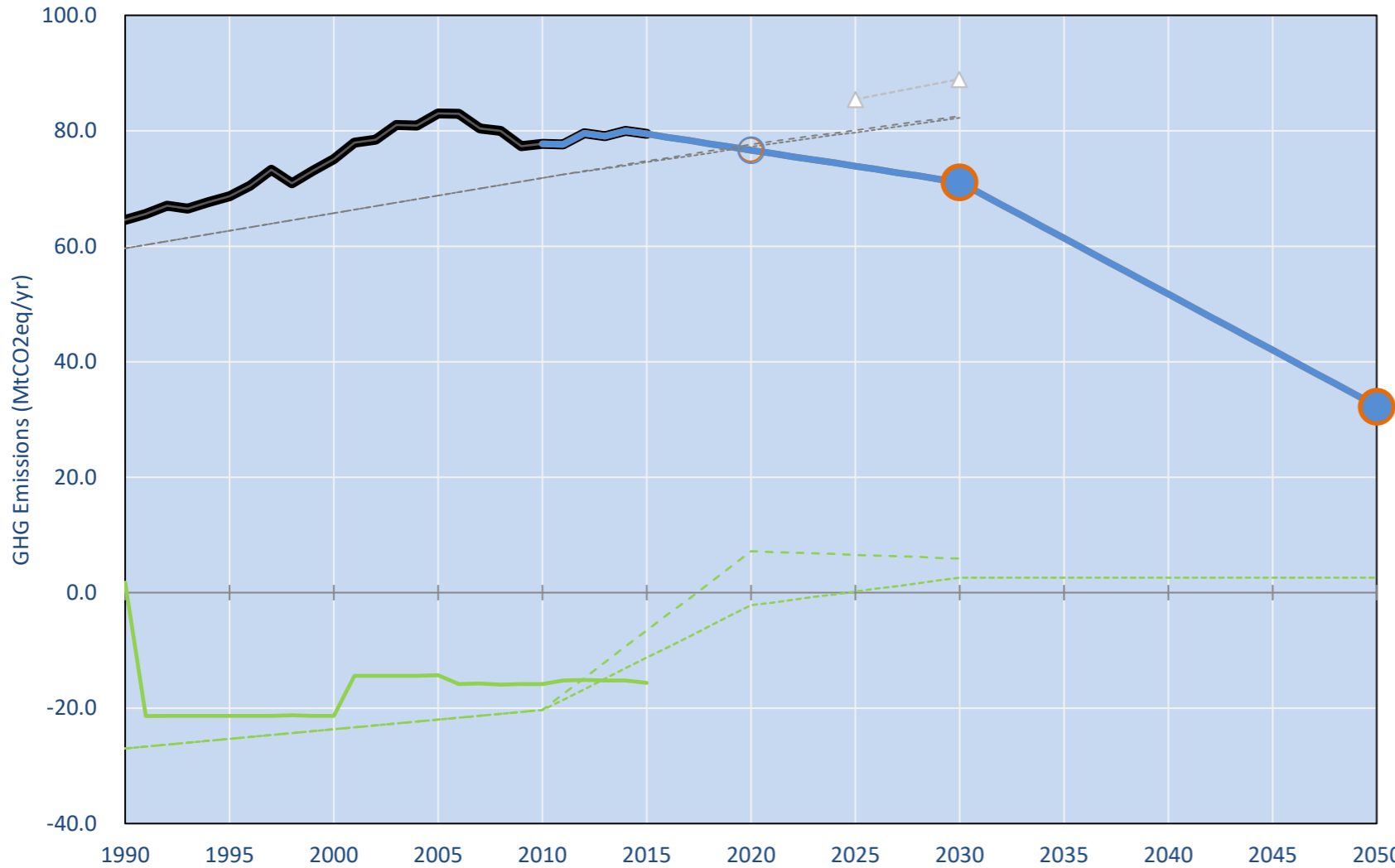
15t #18

13.9t #20

NDC: Commits to reduce GHG emissions to 30% below 2005 levels by 2030 remains provisional pending confirmation of approaches to be taken in accounting for land sector and confirmation of access to carbon markets. (GWP AR4)

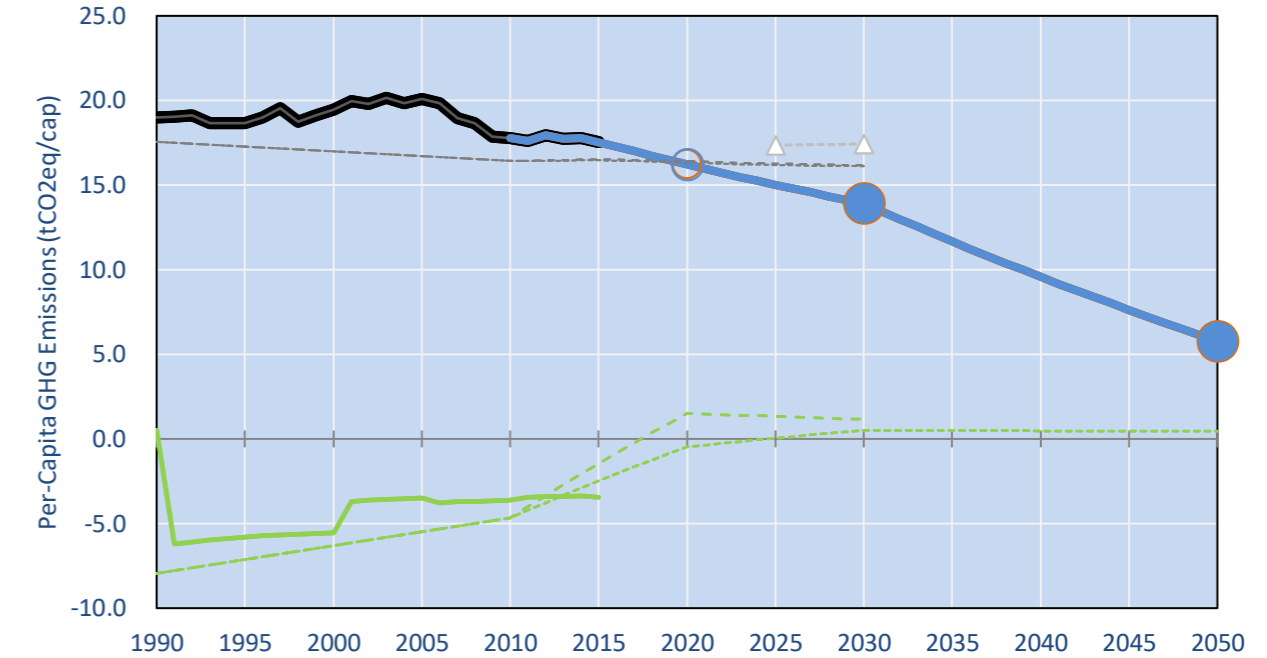
INDC Submitted: 7/07/2015

GHG Emissions

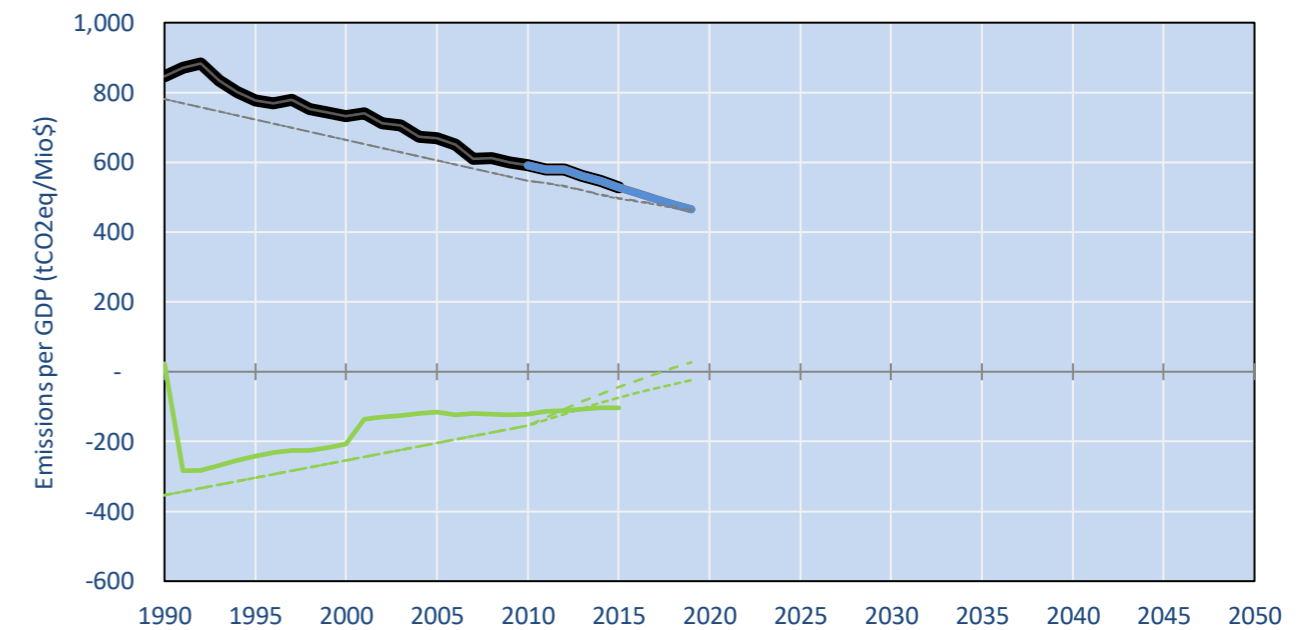


- Reference Total GHG excl. LULUCF
- Historical Covered Emissions, incl. LULUCF, if covered.
- LOW INDC Covered Emissions, incl. LULUCF if covered
- LOW INDC Covered + Non-Covered Emissions, excl. LULUCF
- HIGH INDC Covered Emissions, incl. LULUCF
- HIGH INDC Covered + Non-Covered Emissions, excl. LULUCF
- HIGH Cancun Pledges
- WM Total excl. LULUCF Projections
- NM Total excl. LULUCF Projections
- Reference LULUCF Emissions
- LOW INDC Levels
- LOW INDC Covered Emissions, excl. LULUCF
- HIGH INDC Levels
- HIGH INDC Covered Emissions, excl. LULUCF
- LOW Cancun Pledges
- WM LULUCF Projections
- Regional/Gas-specific BAU
- Not-covered GHG excl. LULUCF (Region Projection)

Per-Capita Emissions

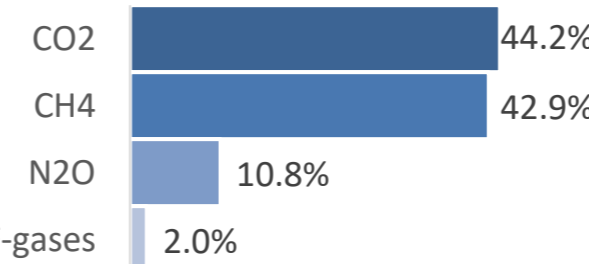


GHG Emissions per GDP

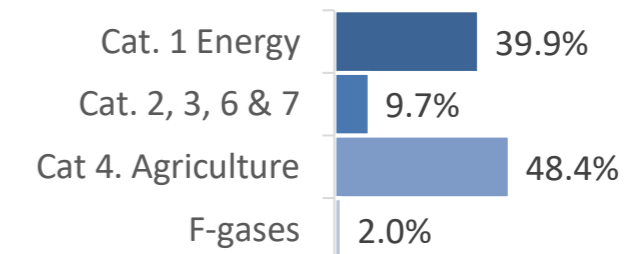


2015 Total GHG Emissions excl. LULUCF

By Gas:



By Sector:



GHG Emissions

	1990	2000	2005	2010	2015	2020	2025	2030
(MtCO2eq/yr in GWP AR4)						low high	low high	low high
Assumed LULUCF Accounting Credits (-)/Debits (+)						20 - 20	13 - 13	13 - 13
NDC covered LULUCF Emissions								
NDC covered Emissions excl. LULUCF	65	75	83	78	79	77 77	74 74	71 71
Total GHG excl. LULUCF	65	75	83	78	79	77 77	74 74	71 71
Total GHG incl. LULUCF	66	54	69	62	64	74 74	74 74	74 74

Relative GHG Emissions

	1990	2000	2005	2010	2015	2020	2025	2030
Total excl. LULUCF						low high	low high	low high
Relative 1990	100%	116%	129%	120%	123%	119% 119%	114% 114%	110% 110%
Relative 2000	86%	100%	111%	104%	106%	102% 102%	98% 98%	95% 95%
Relative 2005	78%	90%	100%	94%	96%	92% 92%	89% 89%	86% 86%
Relative 2010	83%	97%	107%	100%	102%	99% 99%	95% 95%	91% 91%
Relative 2015	81%	94%	104%	98%	100%	97% 97%	93% 93%	90% 90%

Per-Capita Emissions

	1990	2000	2005	2010	2015	2020	2025	2030
Total excl. LULUCF						low high	low high	low high
Population (Mio)	3	4	4	4	5	5 5	5 5	5 5
Per-Capita Emissions (tCO2eq/cap)	19.0	19.5	20.1	17.8	17.5	16.2 16.2	15.0 15.0	13.9 13.9
Relative 1990	100%	102%	106%	94%	92%	85% 85%	79% 79%	73% 73%
Relative 2000	98%	100%	103%	91%	90%	83% 83%	77% 77%	72% 72%
Relative 2005	95%	97%	100%	89%	87%	81% 81%	75% 75%	69% 69%
Relative 2010	107%	109%	113%	100%	99%	91% 91%	84% 84%	78% 78%
Relative 2015	108%	111%	114%	101%	100%	92% 92%	86% 86%	79% 79%

Data Sources:

Cat1_CO2	PRIMAPHIST17	Cat5A1_CO2	UNFCCC CRF + Nat. Comms.
Cat2367_CO2	PRIMAPHIST17	Cat5A2_CO2	UNFCCC CRF + Nat. Comms.
Cat4_CO2	PRIMAPHIST17	Cat5LtoNonFL_CO	UNFCCC CRF + Nat. Comms.
Cat5_CO2	PRIMAPHIST17	Cat5GCMCMWM_C	UNFCCC CRF + Nat. Comms.
Cat1_CH4	PRIMAPHIST17	Cat5A1ForestFires	UNFCCC Cat5 + EDGAR(IPCC Database)
Cat2367_CH4	PRIMAPHIST17	Cat5A1HWP_CO2	UNFCCC CRF + Nat. Comms.
Cat4_CH4	PRIMAPHIST17	Cat5bisA_CO2	UNFCCC CRF + NATCOMM.
Cat5_CH4	PRIMAPHIST17	Cat5bisB_CO2	UNFCCC CRF + NATCOMM.
Cat1_N2O	PRIMAPHIST17	Cat5bisC_CO2	UNFCCC CRF + NATCOMM.
Cat2367_N2O	PRIMAPHIST17	Cat5bisD_CO2	UNFCCC CRF + NATCOMM.
Cat4_N2O	PRIMAPHIST17	Cat5bisE_CO2	UNFCCC CRF + NATCOMM.
Cat5_N2O	PRIMAPHIST17	PRO_WM_Cat5_G	UNFCCC Annex I Reports
Cat0_HFCs	PRIMAPHIST17	Metric	GWP AR4
Cat0_PFCs	PRIMAPHIST17		
Cat0_SF6	PRIMAPHIST17		
Population	UN 2015 Population Projections MEDIUM		
GDP	IMF WEO 2015, PPP adjusted GDP, constant 2009 prices...		
	IPCC WG3 Scenario IMAGE AMPERE2-550-FullTech-HST		
	PRIMAPHIST16 description: www.pik-potsdam.de/primap-live/primap-hist/		
	Gratefully acknowledged in particular: PRIMAP, CAIT, CDIAC, EDGAR, IPCC, IEA, UNEP Gap Team, AMPERE Team and comments on earlier versions, in particular by Giacomo Grassi. Errors and misjudgements are our own. Malte Meinshausen & Ryan Alexander; The "Fiji COP23" Edition was enabled through support via the BMUB project UM14 41 4060		
	This Factsheet is available at www.climatecollege.unimelb.edu.au/indc-factsheets. Check out as well: www.climateactiontracker.org, www.mitigation-contributions.org, cait.wri.org, infographics.pbl.nl/indc, live.primap.org, www.unep.org/climatechange/pledgepipeline, and our twitter feed @ClimateCollege		

climatecollege.unimelb.edu.au



Various 'fair' contributions for a global 'least-cost' 2°C path (total incl. LULUCF):

2025 rel. 2010:		2030 rel. 2010:	
LEADER	#N/A	LEADER	#N/A
CDC	-14%	CDC	-25%
ECPC50	-37%	ECPC50	-59%
ECPC90	-16%	ECPC90	-28%
GDR	-56%	GDR	-74%
INDC HIGH	20%	INDC HIGH	19%
INDC LOW	20%	INDC LOW	19%



Shown fair contributions only indicative

"Fair" contributions for a global 'least-cost' 2°C track:

LEADER	Leader
CDC	Common-but-diff. per-cap. convergence
ECPC50	Eq. cum. Per-capita since 1950
ECPC90	Eq. cum. Per-capita since 1990
GDR	Greenhouse Development Rights
#N/A	No available data