

Namibia

Per-Capita Emissions in 2030 rel. 2015 (excl. LULUCF): **+14%**

NDC 2025

NDC 2030

2015 World Rank

2025 World Rank

2030 World Rank

Share of World Emissions excl. LULUCF (Rank):

0.0% #133

0.0% #126

0.0% #126

Per-Capita Emissions (tCO2eq/cap)

5.4t #85

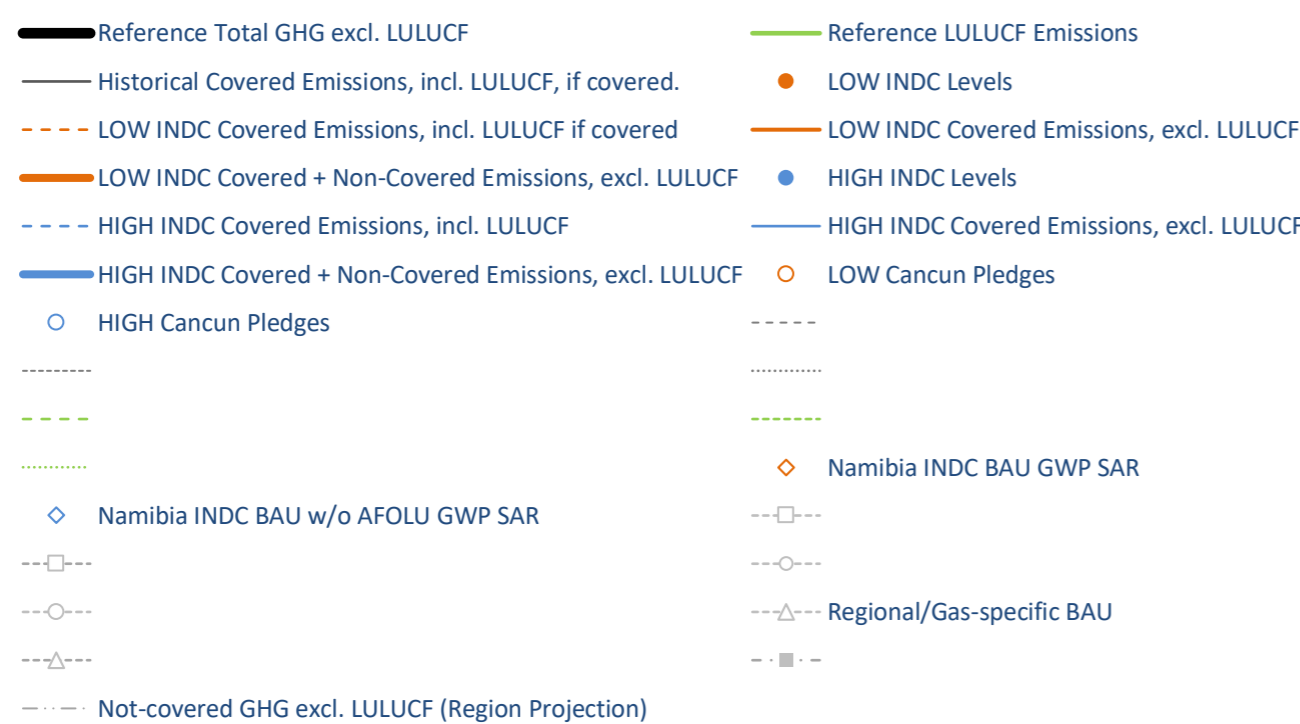
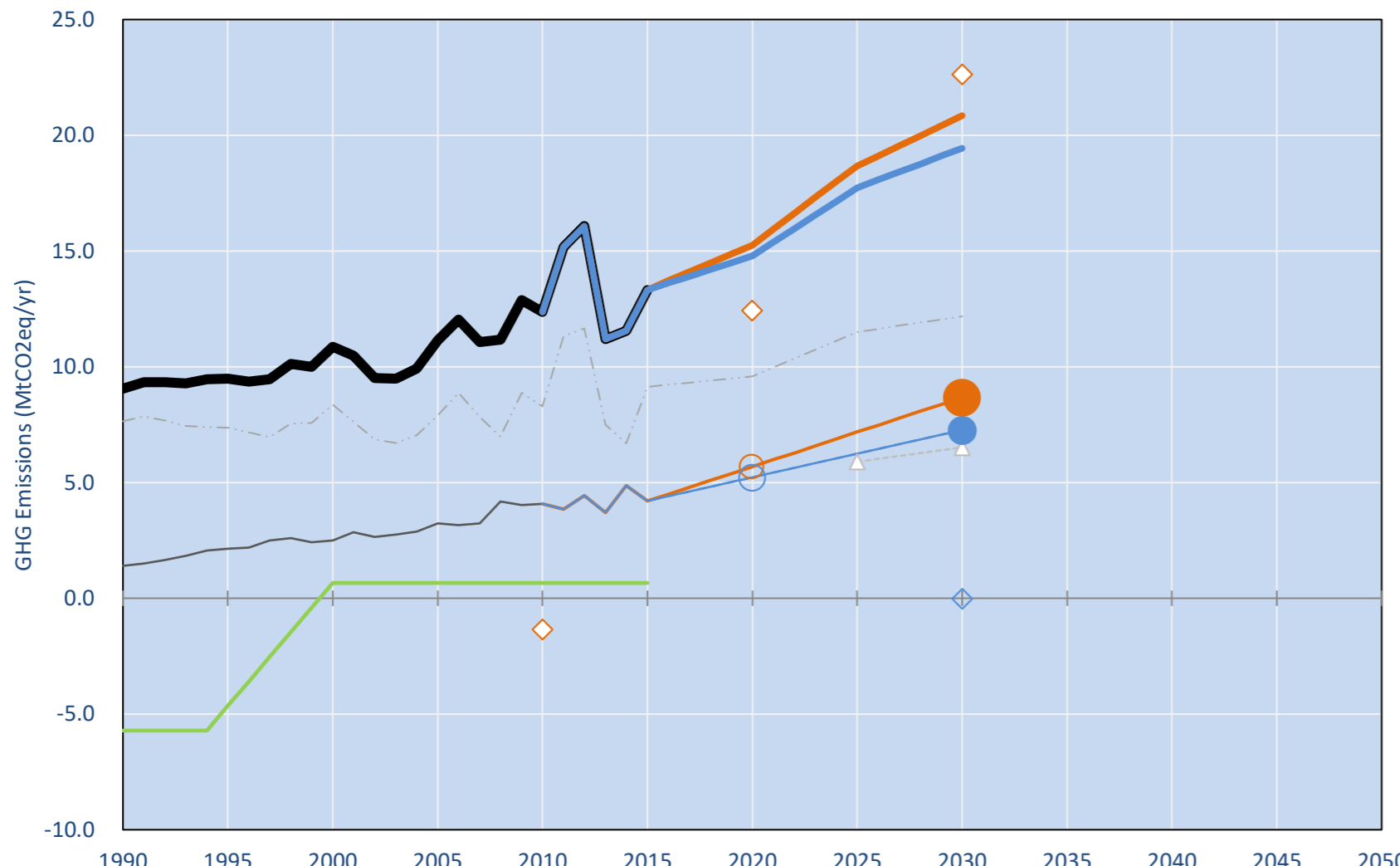
6.1t #75

6.2t #77

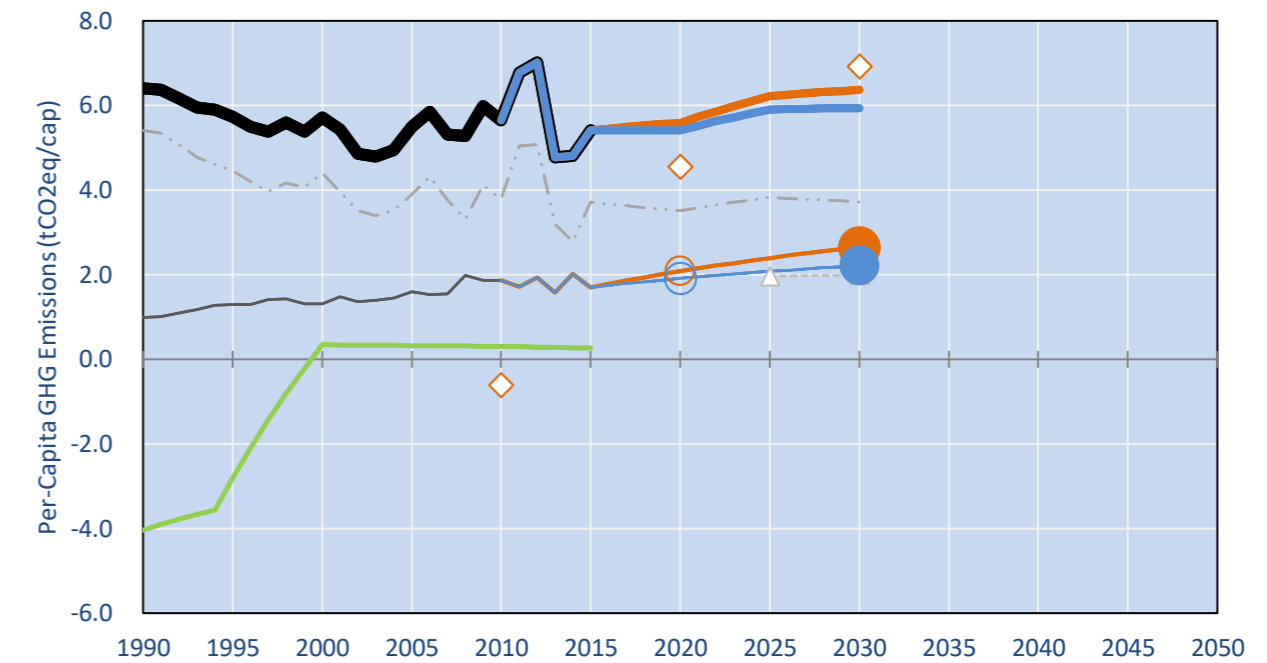
NDC: Aims at a reduction of about 89% of GHG emissions by 2030 compared to BAU. (GWP SAR)

INDC Submitted: 29/09/2015

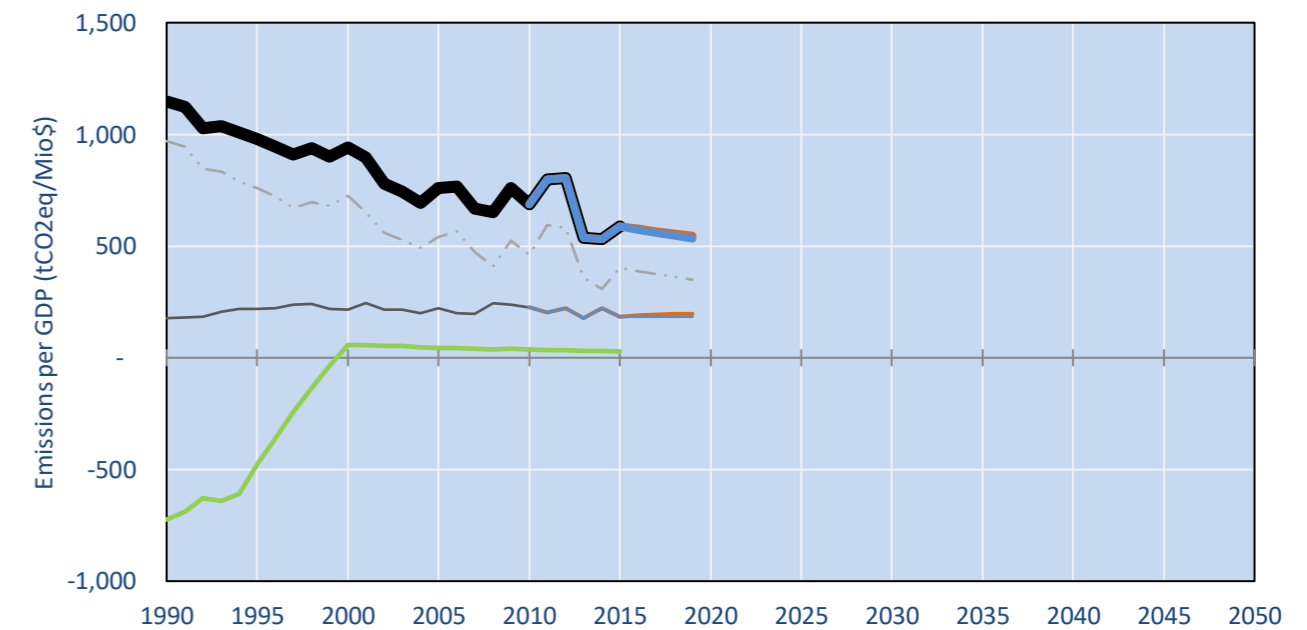
GHG Emissions



Per-Capita Emissions

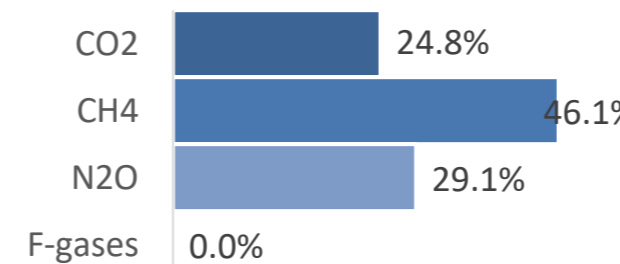


GHG Emissions per GDP

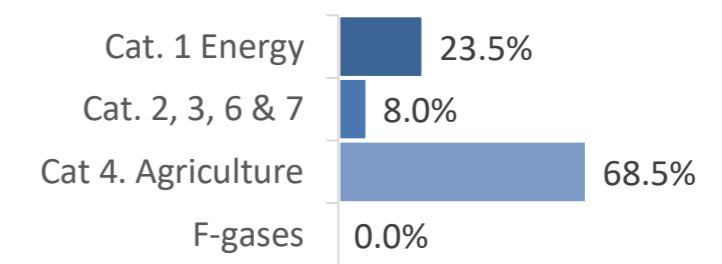


2015 Total GHG Emissions excl. LULUCF

By Gas:



By Sector:



GHG Emissions

	1990	2000	2005	2010	2015	2020		2025		2030	
(MtCO2eq/yr in GWP AR5)						low	high	low	high	low	high
Assumed LULUCF Accounting Credits (-)/Debits (+)											
NDC covered LULUCF Emissions	-	-	-	-	-	-	-	-	-	-	-
NDC covered Emissions excl. LULUCF	1	2	3	4	4	6	5	7	6	9	7
Total GHG excl. LULUCF	9	11	11	12	13	15	15	19	18	21	19
Total GHG incl. LULUCF	3	12	12	13	14	16	15	19	18	22	20

Relative GHG Emissions

	1990	2000	2005	2010	2015	2020		2025		2030	
Total excl. LULUCF						low	high	low	high	low	high
Relative 1990	100%	120%	123%	137%	147%	169%	163%	206%	196%	230%	215%
Relative 2000	83%	100%	103%	114%	123%	141%	136%	172%	163%	192%	179%
Relative 2005	81%	97%	100%	111%	119%	137%	133%	167%	159%	187%	174%
Relative 2010	73%	88%	90%	100%	108%	123%	120%	151%	143%	168%	157%
Relative 2015	68%	81%	84%	93%	100%	115%	111%	140%	133%	156%	146%

Per-Capita Emissions

	1990	2000	2005	2010	2015	2020		2025		2030	
Total excl. LULUCF						low	high	low	high	low	high
Population (Mio)	1	2	2	2	2	3	3	3	3	3	3
Per-Capita Emissions (tCO2eq/cap)	6.4	5.7	5.5	5.6	5.4	5.6	5.4	6.2	5.9	6.4	5.9
Relative 1990	100%	89%	86%	88%	85%	87%	85%	97%	92%	100%	93%
Relative 2000	112%	100%	96%	99%	95%	98%	95%	109%	103%	111%	104%
Relative 2005	116%	104%	100%	102%	98%	102%	98%	113%	107%	116%	108%
Relative 2010	113%	101%	98%	100%	96%	99%	96%	110%	105%	113%	105%
Relative 2015	118%	106%	102%	104%	100%	103%	100%	115%	109%	118%	110%

Data Sources:

Cat1_CO2	PRIMAPHIST17	Cat5A1_CO2	UNFCCC CRF + Nat. Comms.
Cat2367_CO2	PRIMAPHIST17	Cat5A2_CO2	UNFCCC CRF + Nat. Comms.
Cat4_CO2	PRIMAPHIST17	Cat5LtoNonFL_CO2	UNFCCC CRF + Nat. Comms.
Cat5_CO2	PRIMAPHIST17	Cat5GMCMWMM_C	UNFCCC CRF
Cat1_CH4	PRIMAPHIST17	Cat5A1ForestFires	UNFCCC Cat5 + EDGAR(IPCC Database)
Cat2367_CH4	PRIMAPHIST17	Cat5A1HWP_CO2	UNFCCC CRF + Nat. Comms.
Cat4_CH4	PRIMAPHIST17	Cat5bisA_CO2	UNFCCC CRF + NATCOMM.
Cat5_CH4	PRIMAPHIST17	Cat5bisB_CO2	UNFCCC CRF + NATCOMM.
Cat1_N2O	PRIMAPHIST17	Cat5bisC_CO2	UNFCCC CRF + NATCOMM.
Cat2367_N2O	PRIMAPHIST17	Cat5bisD_CO2	UNFCCC CRF + NATCOMM.
Cat4_N2O	PRIMAPHIST17	Cat5bisE_CO2	UNFCCC CRF + NATCOMM.
Cat5_N2O	PRIMAPHIST17	PRO_WM_Cat5_G	UNFCCC Annex I Reports
Cat0_HFCs	PRIMAPHIST17	Metric	GWP AR5
Cat0_PFCs	PRIMAPHIST17		
Cat0_SF6	PRIMAPHIST17		
Population	UN 2015 Population Projections MEDIUM		
GDP	IMF WEO 2015, PPP adjusted GDP, constant 2009 prices...		
	IPCC WG3 Scenario IMAGE AMPERE2-550-FullTech-HST		
	PRIMAPHIST16 description: www.pik-potsdam.de/primap-live/primap-hist/		
	Gratefully acknowledged in particular: PRIMAP, CAIT, CDIAC, EDGAR, IPCC, IEA, UNEP Gap Team, AMPERE Team and comments on earlier versions, in particular by Giacomo Grassi. Errors and misjudgements are our own. Malte Meinshausen & Ryan Alexander; The "Fiji COP23" Edition was enabled through support via the BMUB project UM14 41 4060		
	This Factsheet is available at www.climatecollege.unimelb.edu.au/indc-factsheets. Check out as well: www.climateactiontracker.org, www.mitigation-contributions.org, cait.wri.org, infographics.pbl.nl/indc, live.primap.org, www.unep.org/climatechange/pledgepipeline, and our twitter feed @ClimateCollege		
		climatecollege.unimelb.edu.au	
		AUSTRALIAN-GERMAN CLIMATE & ENERGY COLLEGE	

Various 'fair' contributions for a global 'least-cost' 2°C path (total incl. LULUCF):

	2025 rel. 2010:	2030 rel. 2010:	
LEADER	#N/A	LEADER	#N/A
CDC	23%	CDC	16%
ECPC50	7%	ECPC50	3%
ECPC90	22%	ECPC90	21%
GDR	9%	GDR	9%
INDC HIGH	41%	INDC HIGH	54%
INDC LOW	48%	INDC LOW	65%



Shown fair contributions only indicative

"Fair" contributions for a global 'least-cost' 2°C track:

LEADER	Leader
CDC	Common-but-diff. per-cap. convergence
ECPC50	Eq. cum. Per-capita since 1950
ECPC90	Eq. cum. Per-capita since 1990
GDR	Greenhouse Development Rights
#N/A	No available data