

Shown: 2025 & 2030: Min/max of unconditional and conditional targets

Paris Agreement ratified on: 19/09/2017

Myanmar

Per-Capita Emissions in 2030 rel. 2015 (excl. LULUCF): **-17%**

NDC 2025

NDC 2030

2015 World Rank

2025 World Rank

2030 World Rank

Share of World Emissions excl. LULUCF (Rank):

0.3% #44

0.2% #55

0.2% #54

Per-Capita Emissions (tCO₂eq/cap)

2.5t #139

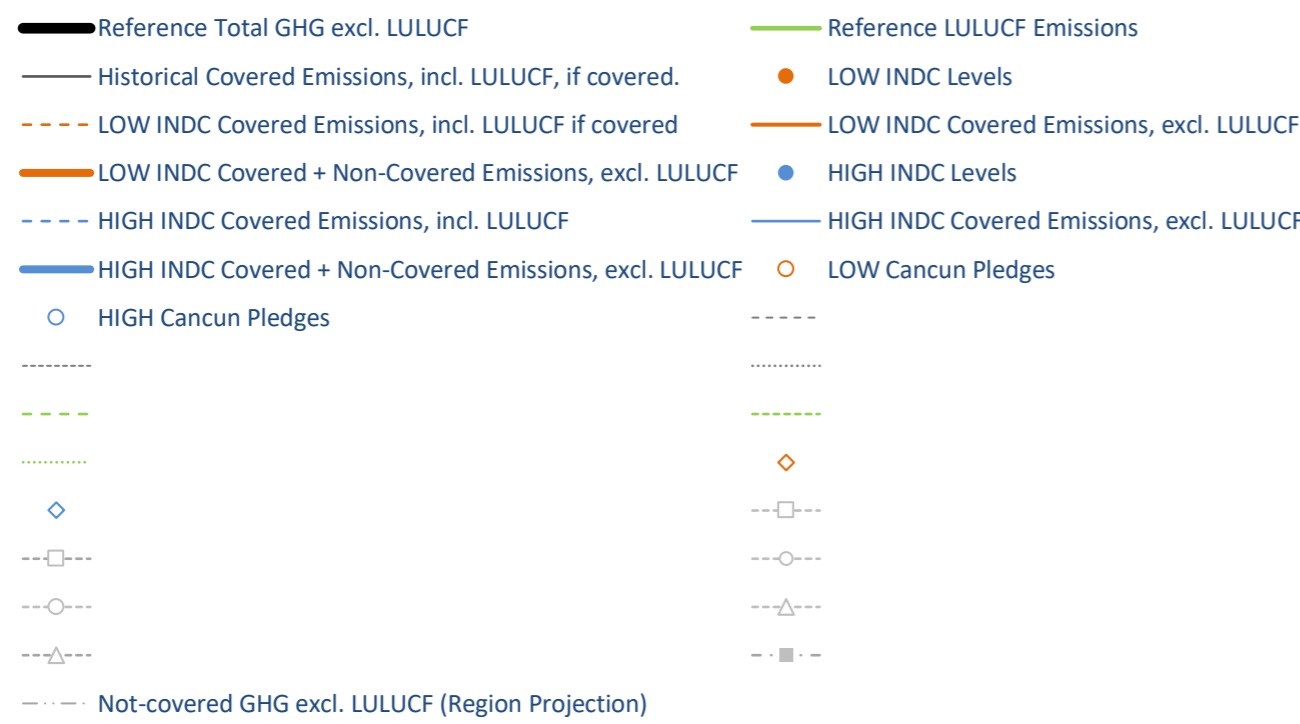
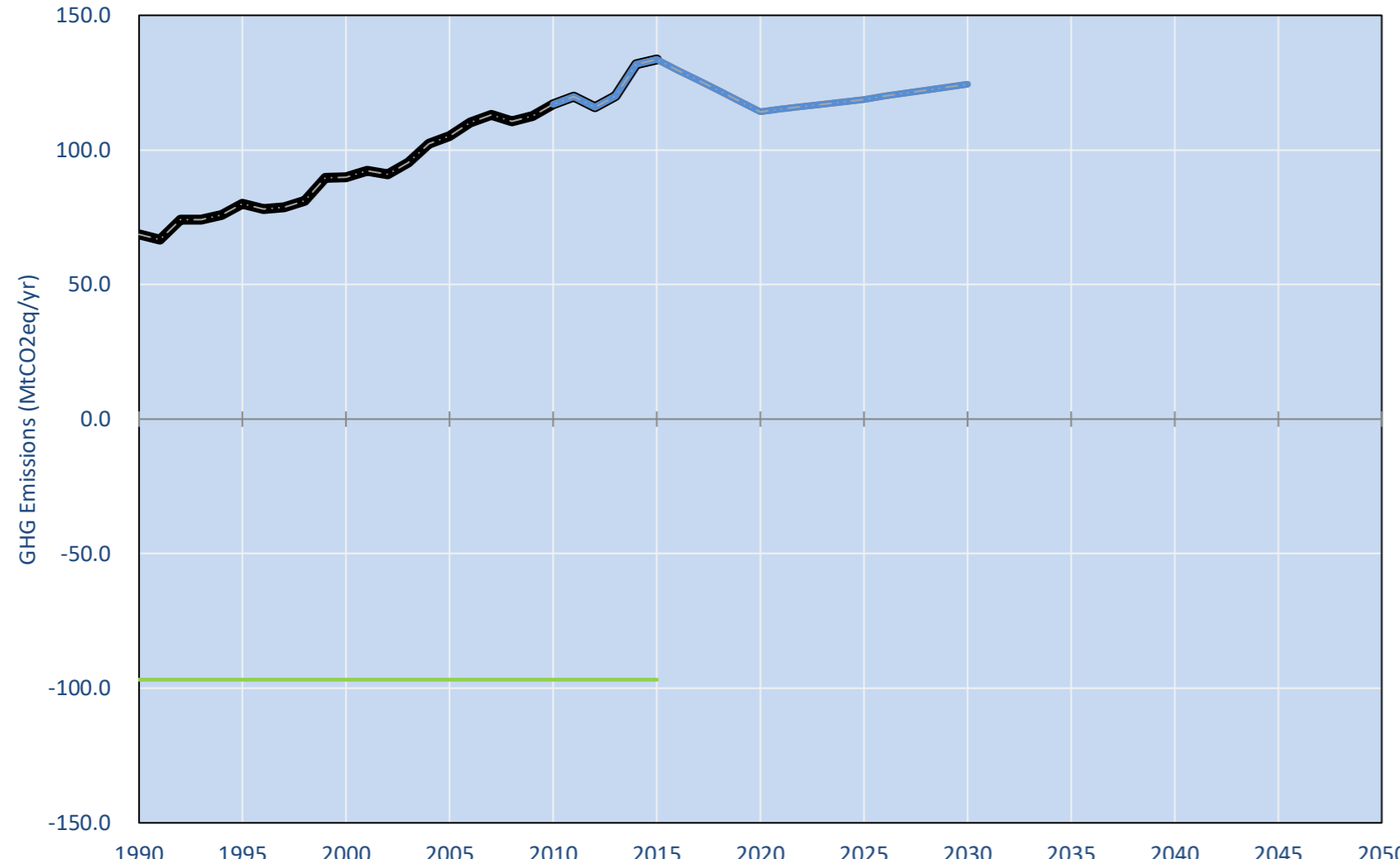
2t #157

2.1t #152

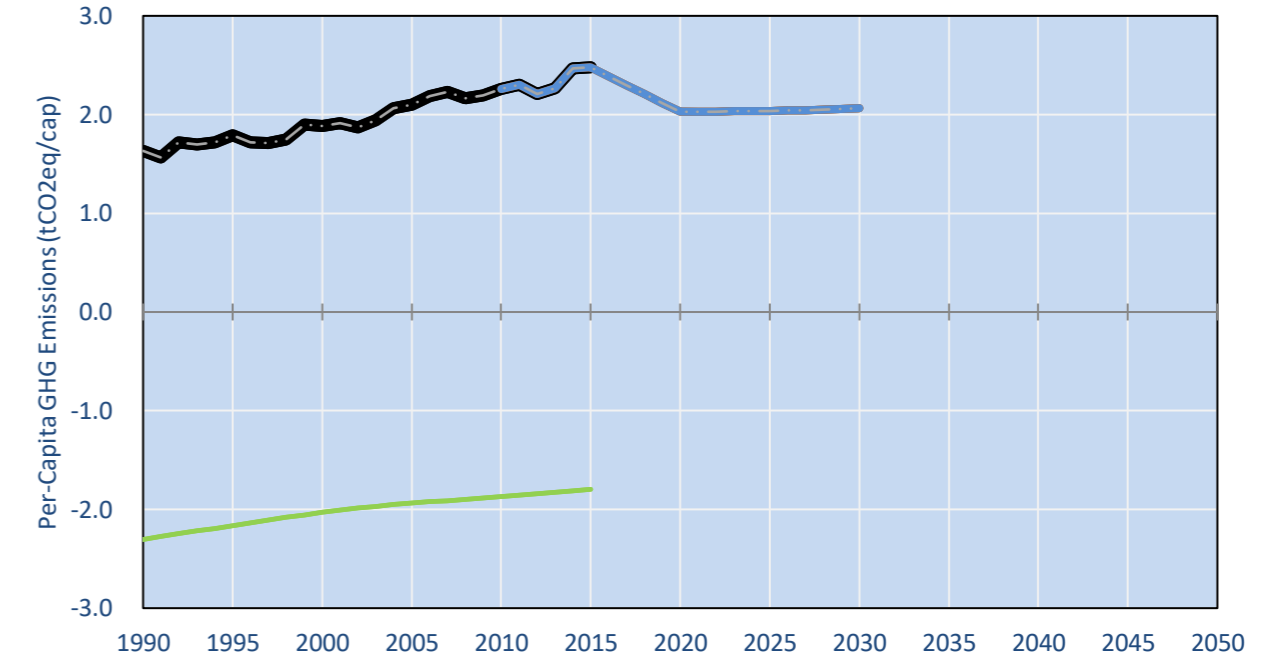
NDC: Will undertake mitigation actions in line with sustainable development needs, conditional on availability of international support. (N/A (no quantitative emission target))

INDC Submitted: 28/09/2015

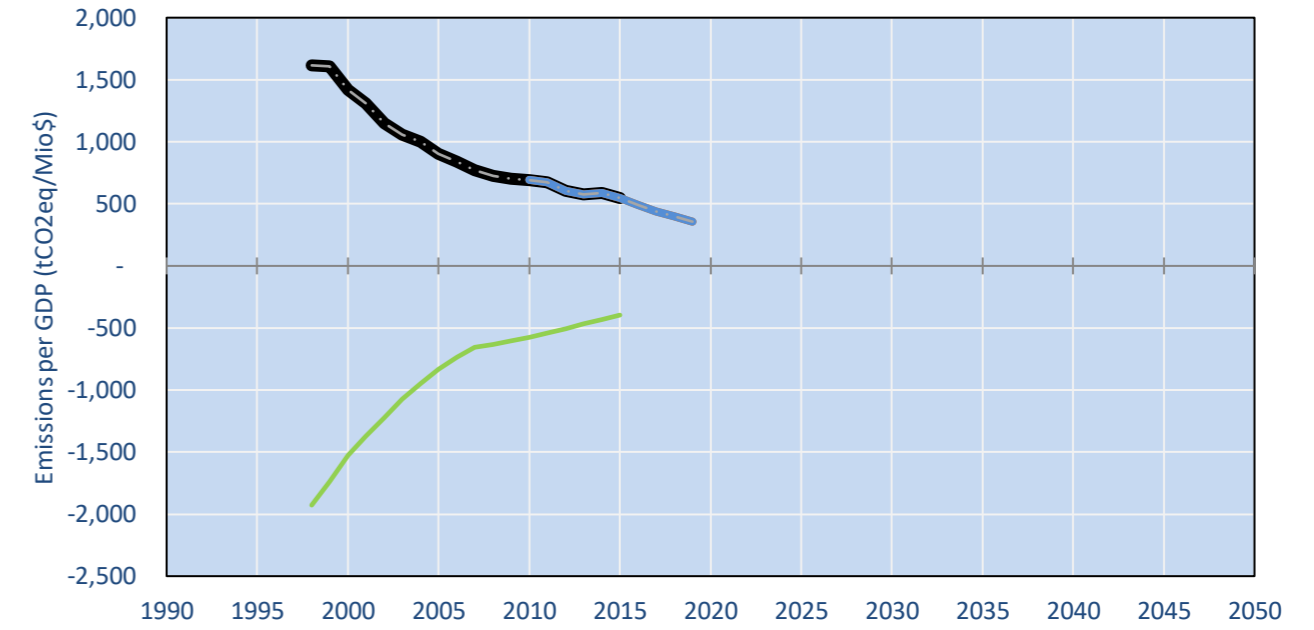
GHG Emissions



Per-Capita Emissions

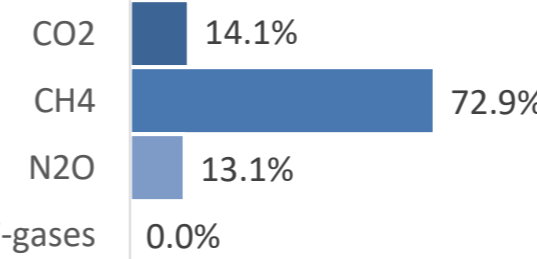


GHG Emissions per GDP

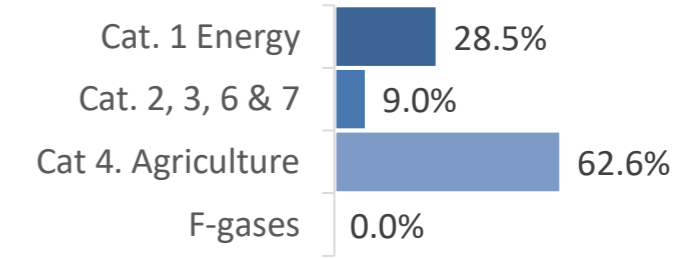


2015 Total GHG Emissions excl. LULUCF

By Gas:



By Sector:



GHG Emissions

	1990	2000	2005	2010	2015	2020		2025		2030	
(MtCO ₂ eq/yr in GWP AR5)						low	high	low	high	low	high
Assumed LULUCF Accounting Credits (-)/Debits (+)											
NDC covered LULUCF Emissions	-	-	-	-	-	-	-	-	-	-	-
NDC covered Emissions excl. LULUCF	-	-	-	-	-	-	-	-	-	-	-
Total GHG excl. LULUCF	69	90	105	117	134	114	114	119	119	124	124
Total GHG incl. LULUCF	28	7	8	20	37	17	17	22	22	28	28

Relative GHG Emissions

	1990	2000	2005	2010	2015	2020		2025		2030	
Total excl. LULUCF						low	high	low	high	low	high
Relative 1990	100%	131%	153%	171%	195%	167%	167%	173%	173%	181%	181%
Relative 2000	76%	100%	117%	130%	149%	127%	127%	132%	132%	138%	138%
Relative 2005	65%	85%	100%	111%	127%	109%	109%	113%	113%	118%	118%
Relative 2010	59%	77%	90%	100%	114%	98%	98%	102%	102%	106%	106%
Relative 2015	51%	67%	79%	88%	100%	85%	85%	89%	89%	93%	93%

Per-Capita Emissions

	1990	2000	2005	2010	2015	2020		2025		2030	
Total excl. LULUCF						low	high	low	high	low	high
Population (Mio)	42	48	50	52	54	56	56	58	58	60	60
Per-Capita Emissions (tCO ₂ eq/cap)	1.6	1.9	2.1	2.3	2.5	2.0	2.0	2.0	2.0	2.1	2.1
Relative 1990	100%	115%	129%	138%	152%	124%	124%	125%	125%	126%	126%
Relative 2000	87%	100%	112%	120%	132%	108%	108%	108%	108%	110%	110%
Relative 2005	78%	90%	100%	107%	118%	97%	97%	97%	97%	98%	98%
Relative 2010	72%	83%	93%	100%	110%	90%	90%	90%	90%	91%	91%
Relative 2015	66%	76%	85%	91%	100%	82%	82%	82%	82%	83%	83%

Data Sources:

Cat1_CO2	PRIMAPHIST17	Cat5A1_CO2	UNFCCC CRF + Nat. Comms.
Cat2367_CO2	PRIMAPHIST17	Cat5A2_CO2	UNFCCC CRF + Nat. Comms.
Cat4_CO2	PRIMAPHIST17	Cat5LtoNonFL_CO2	UNFCCC CRF + Nat. Comms.
Cat5_CO2	PRIMAPHIST17	Cat5GCMCWMW_C	UNFCCC CRF
Cat1_CH4	PRIMAPHIST17	Cat5A1ForestFires	UNFCCC Cat5 + EDGAR(IPCC Database)
Cat2367_CH4	PRIMAPHIST17	Cat5A1HWP_CO2	UNFCCC CRF + Nat. Comms.
Cat4_CH4	PRIMAPHIST17	Cat5bisA_CO2	UNFCCC CRF + NATCOMM.
Cat5_CH4	PRIMAPHIST17	Cat5bisB_CO2	UNFCCC CRF + NATCOMM.
Cat1_N2O	PRIMAPHIST17	Cat5bisC_CO2	UNFCCC CRF + NATCOMM.
Cat2367_N2O	PRIMAPHIST17	Cat5bisD_CO2	UNFCCC CRF + NATCOMM.
Cat4_N2O	PRIMAPHIST17	Cat5bisE_CO2	UNFCCC CRF + NATCOMM.
Cat5_N2O	PRIMAPHIST17	PRO_WM_Cat5_G	UNFCCC Annex I Reports
Cat0_HFCs	PRIMAPHIST17	Metric	GWP AR5
Cat0_PFCs	PRIMAPHIST17		
Cat0_SF6	PRIMAPHIST17		
Population	UN 2015 Population Projections MEDIUM		
GDP	IMF WEO 2015, PPP adjusted GDP, constant 2009 prices...		
	IPCC WG3 Scenario IMAGE AMPERE2-550-FullTech-HST		
	PRIMAPHIST16 description: www.pik-potsdam.de/primap-live/primap-hist/		
	Gratefully acknowledged in particular: PRIMAP, CAIT, CDIAC, EDGAR, IPCC, IEA, UNEP Gap Team, AMPERE Team and comments on earlier versions, in particular by Giacomo Grassi. Errors and misjudgements are our own. Malte Meinshausen & Ryan Alexander; The "Fiji COP23" Edition was enabled through support via the BMUB project UM14 41 4060		
	This Factsheet is available at www.climatecollege.unimelb.edu.au/indc-factsheets. Check out as well: www.climateactiontracker.org, www.mitigation-contributions.org, cait.wri.org, infographics.pbl.nl/indc, live.primap.org, www.unep.org/climatechange/pledgepipeline, and our twitter feed @ClimateCollege		

climatecollege.unimelb.edu.au



Various 'fair' contributions for a global 'least-cost' 2°C path (total incl. LULUCF):

More info on www.mitigation-contributions.org

2025 rel. 2010:		2030 rel. 2010:		"Fair" contributions for a global 'least-cost' 2°C track:	
LEADER	#N/A	LEADER	#N/A	LEADER	Leader
CDC	#N/A	CDC	#N/A	CDC	Common-but-diff. per-cap. convergence
ECPC50	#N/A	ECPC50	#N/A	ECPC50	Eq. cum. Per-capita since 1950
ECPC90	#N/A	ECPC90	#N/A	ECPC90	Eq. cum. Per-capita since 1990
GDR	#N/A	GDR	#N/A	GDR	Greenhouse Development Rights
INDC HIGH	9%	INDC HIGH	37%	#N/A	No available data
INDC LOW	9%	INDC LOW	37%		