

Shown: 2025 & 2030: Min/max of unconditional and conditional targets

Shown are averages for low and high or conditional and unconditional INDCs and their inter-extrapolations

Paris Agreement ratified on: 21/09/2016

Per-Capita Emissions in 2030 rel. 2015 (excl. LULUCF):

-26%

Mexico

NDC 2025

NDC 2030

2015 World Rank

2025 World Rank

2030 World Rank

Share of World Emissions excl. LULUCF (Rank):

1.4% #13

1.2% #16

1.1% #16

Per-Capita Emissions (tCO2eq/cap)

5.5t #85

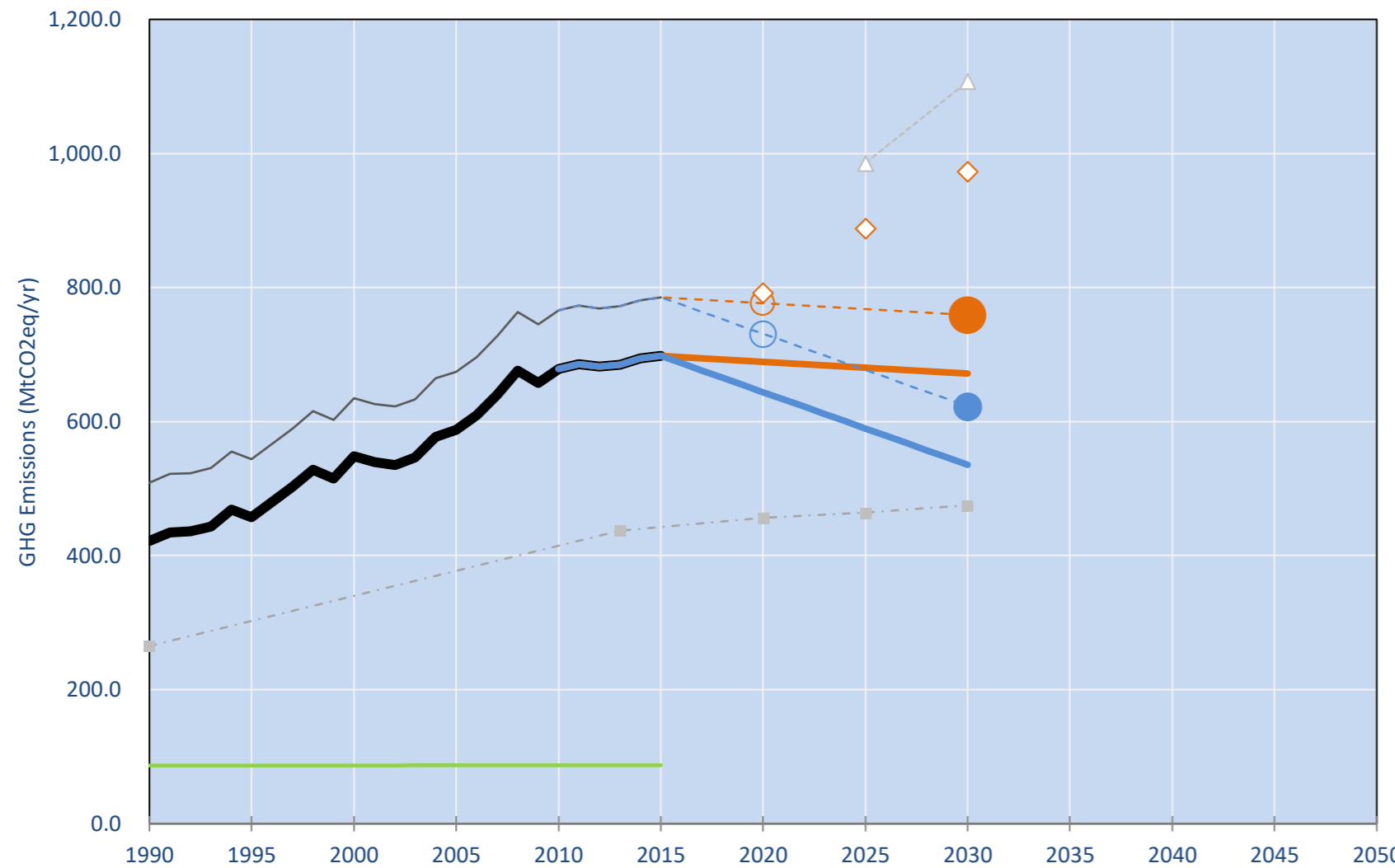
4.5t #104

4.1t #108

NDC: Reduce GHG emissions by 22-36 per cent below BAU of 973 Mt. Extra reductions for black carbon... (GWP AR5)

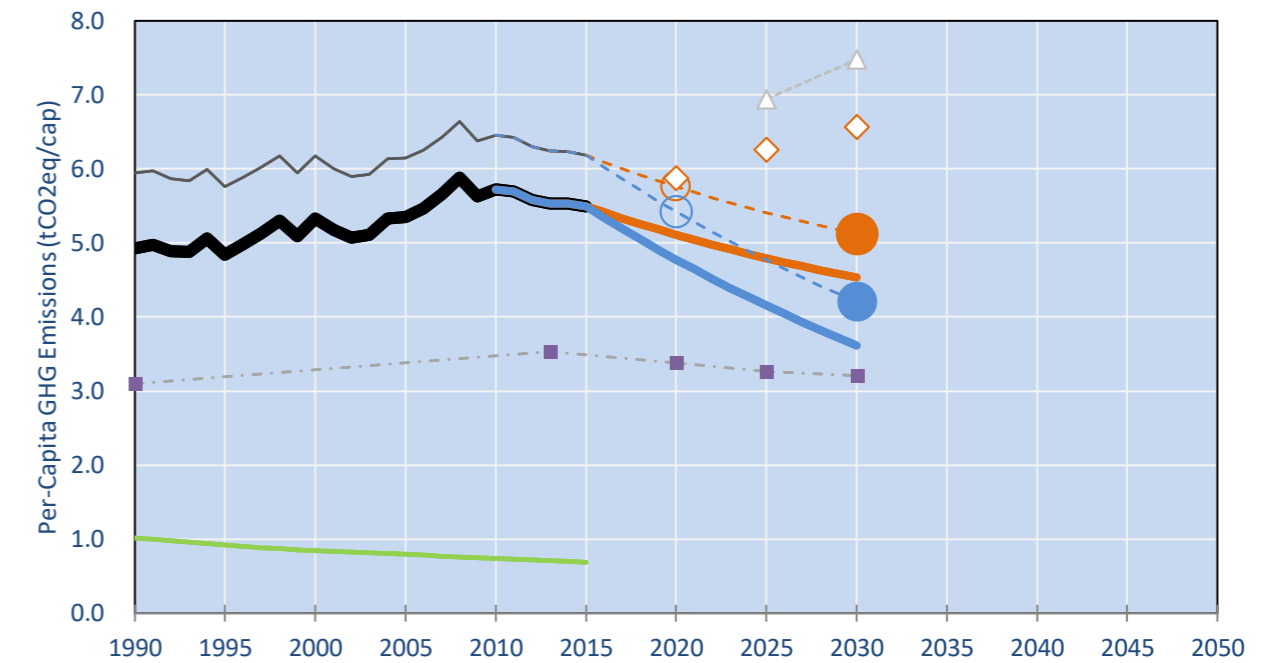
INDC Submitted: 30/03/2015

GHG Emissions

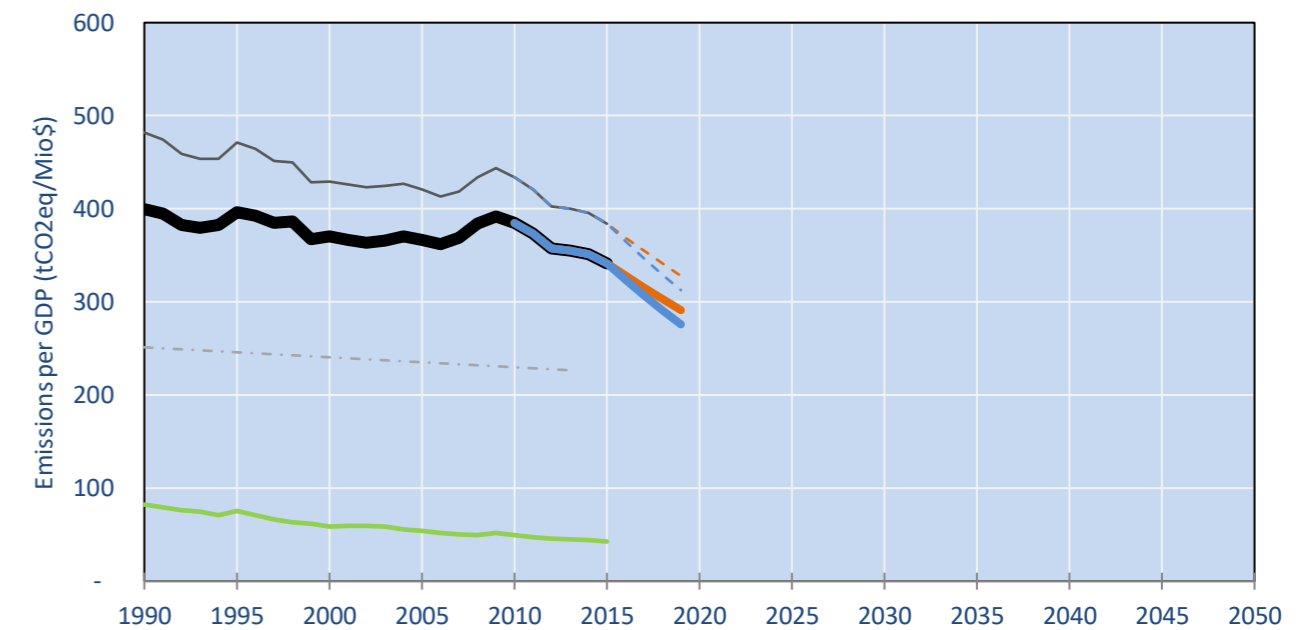


- Reference Total GHG excl. LULUCF
- Historical Covered Emissions, incl. LULUCF, if covered.
- LOW INDC Covered Emissions, incl. LULUCF if covered
- LOW INDC Covered + Non-Covered Emissions, excl. LULUCF
- HIGH INDC Covered Emissions, incl. LULUCF
- HIGH INDC Covered + Non-Covered Emissions, excl. LULUCF
- HIGH Cancun Pledges
- Reference LULUCF Emissions
- LOW INDC Levels
- LOW INDC Covered Emissions, excl. LULUCF
- HIGH INDC Levels
- HIGH INDC Covered Emissions, excl. LULUCF
- LOW Cancun Pledges
- Mexican GHG BAU as part of INDC
- Regional/Gas-specific BAU
- Comparison II Timeseries HIGH
- Not-covered GHG excl. LULUCF (Region Projection)

Per-Capita Emissions

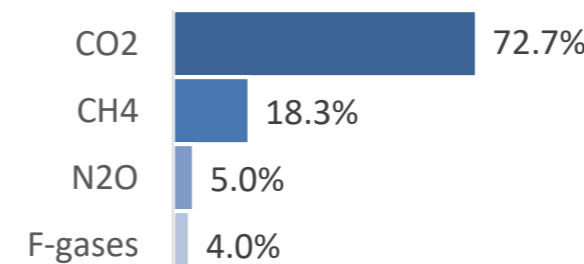


GHG Emissions per GDP

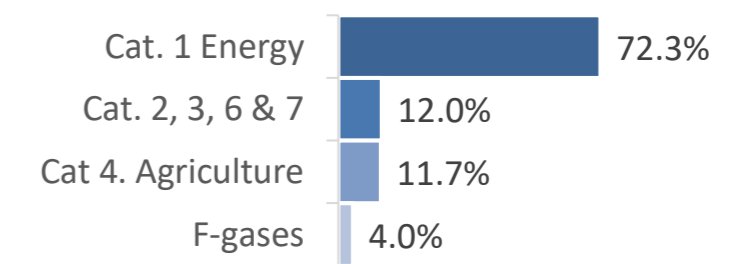


2015 Total GHG Emissions excl. LULUCF

By Gas:



By Sector:



GHG Emissions

	1990	2000	2005	2010	2015	2020		2025		2030	
						low	high	low	high	low	high
(MtCO2eq/yr in GWP AR4)											
Assumed LULUCF Accounting Credits (-)/Debits (+)											
NDC covered LULUCF Emissions											
NDC covered Emissions excl. LULUCF	87	87	87	87	87	87	87	87	87	87	87
Total GHG excl. LULUCF	422	548	587	679	698	689	644	680	590	672	535
Total GHG incl. LULUCF	509	635	675	766	785	776	731	768	677	759	623

Relative GHG Emissions

	1990	2000	2005	2010	2015	2020		2025		2030	
						low	high	low	high	low	high
Total excl. LULUCF											
Relative 1990	100%	130%	139%	161%	165%	163%	153%	161%	140%	159%	127%
Relative 2000	77%	100%	107%	124%	127%	126%	117%	124%	108%	123%	98%
Relative 2005	72%	93%	100%	116%	119%	117%	110%	116%	100%	114%	91%
Relative 2010	62%	81%	87%	100%	103%	102%	95%	100%	87%	99%	79%
Relative 2015	60%	79%	84%	97%	100%	99%	92%	97%	84%	96%	77%

Per-Capita Emissions

	1990	2000	2005	2010	2015	2020		2025		2030	
						low	high	low	high	low	high
Total excl. LULUCF											
Population (Mio)	86	103	110	119	127	135	135	142	142	148	148
Per-Capita Emissions (tCO2eq/cap)	4.9	5.3	5.4	5.7	5.5	5.1	4.8	4.8	4.2	4.5	3.6
Relative 1990	100%	108%	109%	116%	112%	104%	97%	97%	84%	92%	73%
Relative 2000	92%	100%	100%	107%	103%	96%	90%	90%	78%	85%	68%
Relative 2005	92%	100%	100%	107%	103%	96%	89%	90%	78%	85%	68%
Relative 2010	86%	93%	94%	100%	96%	89%	83%	84%	73%	79%	63%
Relative 2015	90%	97%	97%	104%	100%	93%	87%	87%	76%	83%	66%

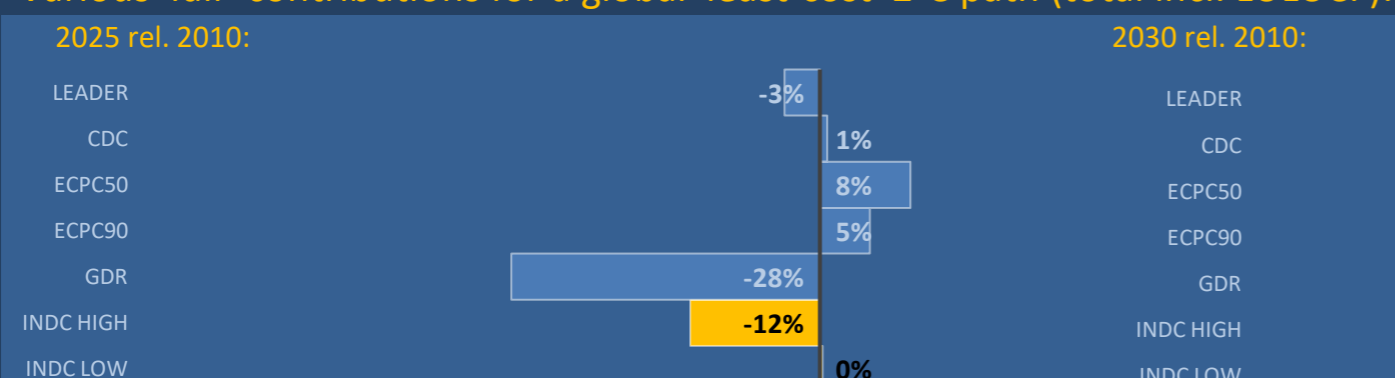
Data Sources:

Cat1_CO2	PRIMAPHIST17	Cat5A1_CO2	UNFCCC CRF + Nat. Comms.
Cat2367_CO2	PRIMAPHIST17	Cat5A2_CO2	UNFCCC CRF + Nat. Comms.
Cat4_CO2	PRIMAPHIST17	Cat5LtoNonFL_CO2	UNFCCC CRF + Nat. Comms.
Cat5_CO2	PRIMAPHIST17	Cat5GCMCMWM_C	UNFCCC CRF
Cat1_CH4	PRIMAPHIST17	Cat5A1ForestFires	UNFCCC Cat5 + EDGAR(IPCC Database)
Cat2367_CH4	PRIMAPHIST17	Cat5A1HWP_CO2	UNFCCC CRF + Nat. Comms.
Cat4_CH4	PRIMAPHIST17	Cat5bisA_CO2	UNFCCC CRF + NATCOMM.
Cat5_CH4	PRIMAPHIST17	Cat5bisB_CO2	UNFCCC CRF + NATCOMM.
Cat1_N2O	PRIMAPHIST17	Cat5bisC_CO2	UNFCCC CRF + NATCOMM.
Cat2367_N2O	PRIMAPHIST17	Cat5bisD_CO2	UNFCCC CRF + NATCOMM.
Cat4_N2O	PRIMAPHIST17	Cat5bisE_CO2	UNFCCC CRF + NATCOMM.
Cat5_N2O	PRIMAPHIST17	PRO_WM_Cat5_G	UNFCCC Annex I Reports
Cat0_HFCs	PRIMAPHIST17	Metric	GWP AR4
Cat0_PFCs	PRIMAPHIST17		
Cat0_SF6	PRIMAPHIST17		
Population	UN 2015 Population Projections MEDIUM		
GDP	IMF WEO 2015, PPP adjusted GDP, constant 2009 prices...		
IPCC WG3 Scenario	IMAGE AMPERE2-550-FullTech-HST		
PRIMAPHIST16 description:	www.pik-potsdam.de/primap-live/primap-hist/		
Gratefully acknowledged in particular:	PRIMAP, CAIT, CDIAC, EDGAR, IPCC, IEA, UNEP Gap Team, AMPERE Team and comments on earlier versions, in particular by Giacomo Grassi. Errors and misjudgements are our own. Malte Meinshausen & Ryan Alexander; The "Fiji COP23" Edition was enabled through support via the BMUB project UM14 41 4060		
This Factsheet is available at	www.climatecollege.unimelb.edu.au/indc-factsheets. Check out as well: www.climateactiontracker.org, www.mitigation-contributions.org, cait.wri.org, infographics.pbl.nl/indc, live.primap.org, www.unep.org/climatechange/pledgepipeline, and our twitter feed @ClimateCollege		

climatecollege.unimelb.edu.au



Various 'fair' contributions for a global 'least-cost' 2°C path (total incl. LULUCF):



More info on www.mitigation-contributions.org

