

# Mauritius

Per-Capita Emissions in 2030 rel. 2015 (excl. LULUCF): **+32%**

NDC 2025

NDC 2030

2015 World Rank

2025 World Rank

2030 World Rank

Share of World Emissions excl. LULUCF (Rank):

0.0% #150

0.0% #148

0.0% #145

Per-Capita Emissions (tCO2eq/cap)

6.1t #70

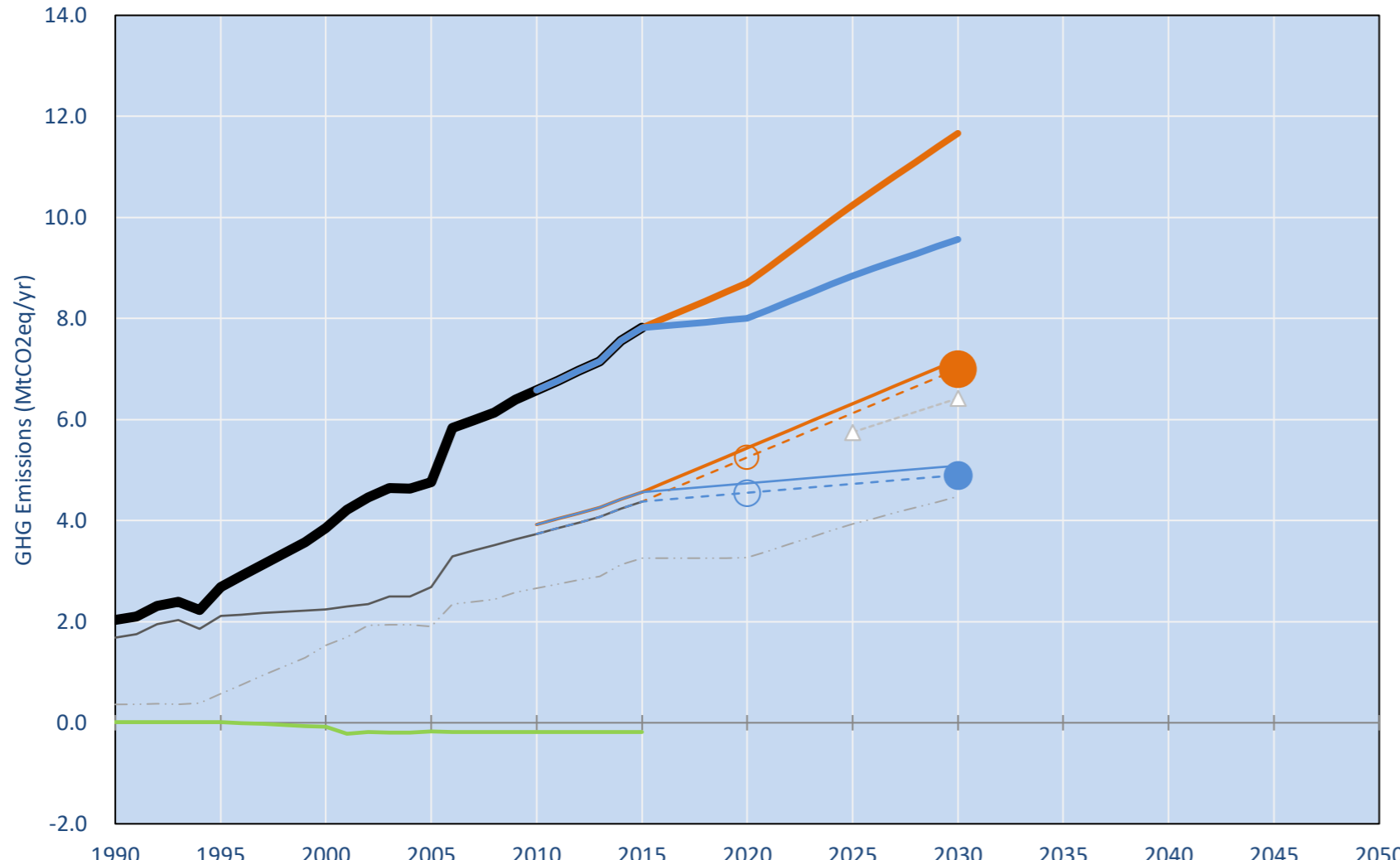
7.3t #60

8.1t #45

NDC: 30% GHG emission reduction compared to BAU by 2030 conditional to international support. (GWP unclear)

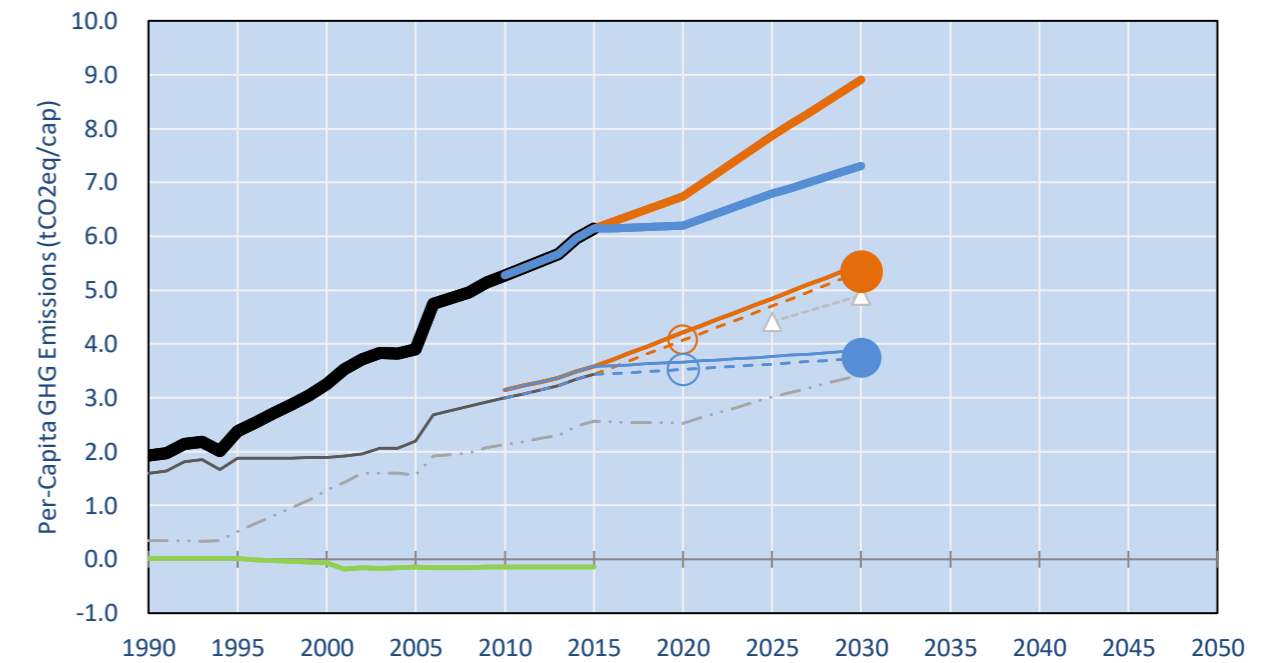
INDC Submitted: 28/09/2015

## GHG Emissions

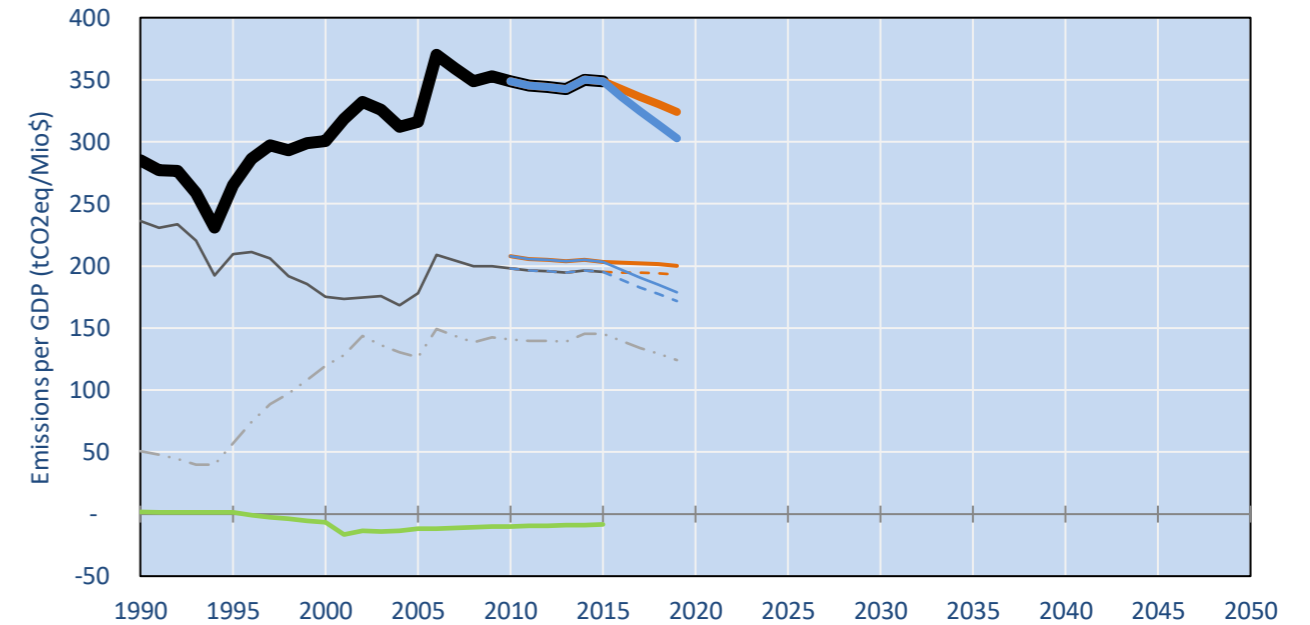


- Reference Total GHG excl. LULUCF
- Historical Covered Emissions, incl. LULUCF, if covered.
- LOW INDC Covered Emissions, incl. LULUCF if covered
- LOW INDC Covered + Non-Covered Emissions, excl. LULUCF
- HIGH INDC Covered Emissions, incl. LULUCF
- HIGH INDC Covered + Non-Covered Emissions, excl. LULUCF
- HIGH Cancun Pledges
- Reference LULUCF Emissions
- LOW INDC Levels
- LOW INDC Covered Emissions, excl. LULUCF
- HIGH INDC Levels
- HIGH INDC Covered Emissions, excl. LULUCF
- LOW Cancun Pledges
- Regional/Gas-specific BAU
- Not-covered GHG excl. LULUCF (Region Projection)

## Per-Capita Emissions

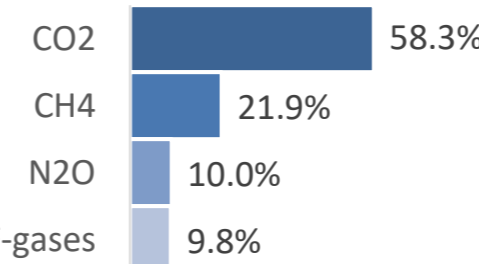


## GHG Emissions per GDP

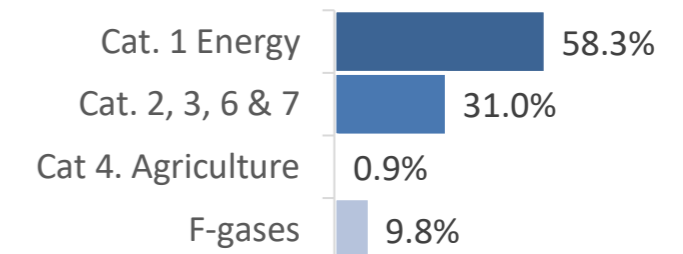


## 2015 Total GHG Emissions excl. LULUCF

By Gas:



By Sector:



## GHG Emissions

	1990	2000	2005	2010	2015	2020		2025		2030	
(MtCO2eq/yr in GWP SAR)						low	high	low	high	low	high
Assumed LULUCF Accounting Credits (-)/Debits (+)	0	0	0	0	0	0	0	0	0	0	0
NDC covered LULUCF Emissions	0	0	0	0	0	0	0	0	0	0	0
NDC covered Emissions excl. LULUCF	2	2	3	4	5	5	5	6	5	7	5
Total GHG excl. LULUCF	2	4	5	7	8	9	8	10	9	12	10
Total GHG incl. LULUCF	2	4	5	6	8	9	8	10	9	11	9

## Relative GHG Emissions

	1990	2000	2005	2010	2015	2020		2025		2030	
Total excl. LULUCF						low	high	low	high	low	high
Relative 1990	100%	189%	234%	323%	384%	427%	393%	503%	435%	573%	470%
Relative 2000	53%	100%	124%	171%	203%	226%	207%	266%	229%	303%	248%
Relative 2005	43%	81%	100%	138%	164%	183%	164%	215%	186%	245%	201%
Relative 2010	31%	59%	72%	100%	119%	132%	122%	156%	134%	177%	145%
Relative 2015	26%	49%	61%	84%	100%	111%	102%	131%	113%	149%	122%

## Per-Capita Emissions

	1990	2000	2005	2010	2015	2020		2025		2030	
Total excl. LULUCF						low	high	low	high	low	high
Population (Mio)	1	1	1	1	1	1	1	1	1	1	1
Per-Capita Emissions (tCO2eq/cap)	1.9	3.3	3.9	5.3	6.1	6.7	6.2	7.9	6.8	8.9	7.3
Relative 1990	100%	169%	202%	274%	319%	349%	321%	408%	352%	462%	379%
Relative 2000	59%	100%	120%	162%	189%	207%	190%	242%	209%	274%	225%
Relative 2005	49%	83%	100%	135%	158%	173%	159%	202%	174%	229%	187%
Relative 2010	37%	62%	74%	100%	116%	128%	117%	149%	129%	169%	138%
Relative 2015	31%	53%	63%	86%	100%	110%	101%	128%	111%	145%	119%

## Data Sources:

Cat1\_CO2 PRIMAPHIST17  
 Cat2367\_CO2 PRIMAPHIST17  
 Cat4\_CO2 PRIMAPHIST17  
 Cat5\_CO2 PRIMAPHIST17  
 Cat1\_CH4 PRIMAPHIST17  
 Cat2367\_CH4 PRIMAPHIST17  
 Cat4\_CH4 PRIMAPHIST17  
 Cat5\_CH4 PRIMAPHIST17  
 Cat1\_N2O PRIMAPHIST17  
 Cat2367\_N2O PRIMAPHIST17  
 Cat4\_N2O PRIMAPHIST17  
 Cat5\_N2O PRIMAPHIST17  
 Cat0\_HFCs PRIMAPHIST17  
 Cat0\_PFCs PRIMAPHIST17  
 Cat0\_SF6 PRIMAPHIST17  
 Population UN 2015 Population Projections MEDIUM  
 GDP IMF WEO 2015, PPP adjusted GDP, constant 2009 prices...  
 IPCC WG3 Scenario IMAGE | AMPERE2-550-FullTech-HST  
 PRIMAPHIST16 description: www.pik-potsdam.de/primap-live/primap-hist/  
 Gratefully acknowledged in particular: PRIMAP, CAIT, CDIAC, EDGAR, IPCC, IEA, UNEP Gap Team, AMPERE Team and comments on earlier versions, in particular by Giacomo Grassi. Errors and misjudgements are our own. Malte Meinshausen & Ryan Alexander; The "Fiji COP23" Edition was enabled through support via the BMUB project UM14 41 4060  
 This Factsheet is available at www.climatecollege.unimelb.edu.au/indc-factsheets. Check out as well: www.climateactiontracker.org, www.mitigation-contributions.org, cait.wri.org, infographics.pbl.nl/indc, live.primap.org, www.unep.org/climatechange/pledgepipeline, and our twitter feed @ClimateCollege  
 climatecollege.unimelb.edu.au  
 AUSTRALIAN-GERMAN CLIMATE & ENERGY COLLEGE

## Various 'fair' contributions for a global 'least-cost' 2°C path (total incl. LULUCF):

	2025 rel. 2010:	2030 rel. 2010:
LEADER	#N/A	LEADER #N/A
CDC	#N/A	CDC #N/A
ECPC50	#N/A	ECPC50 #N/A
ECPC90	#N/A	ECPC90 #N/A
GDR	#N/A	GDR #N/A
INDC HIGH	35%	INDC HIGH 47%
INDC LOW	57%	INDC LOW 79%

## More info on www.mitigation-contributions.org

"Fair" contributions for a global 'least-cost' 2°C track:  
 LEADER Leader  
 CDC Common-but-diff. per-cap. convergence  
 ECPC50 Eq. cum. Per-capita since 1950  
 ECPC90 Eq. cum. Per-capita since 1990  
 GDR Greenhouse Development Rights  
 #N/A No available data