

Shown: 2025 & 2030: Min/max of unconditional and conditional targets

No quantification policies and measures. One BAU scenario shown. Uncertain historical emissions, especially the 1991 spike.

Kuwait

Per-Capita Emissions in 2030 rel. 2015 (excl. LULUCF): **+8%**

INDC 2025

INDC 2030

2015 World Rank

2025 World Rank

2030 World Rank

Share of World Emissions excl. LULUCF (Rank):

0.3% #44

0.3% #43

0.3% #43

Per-Capita Emissions (tCO₂eq/cap)

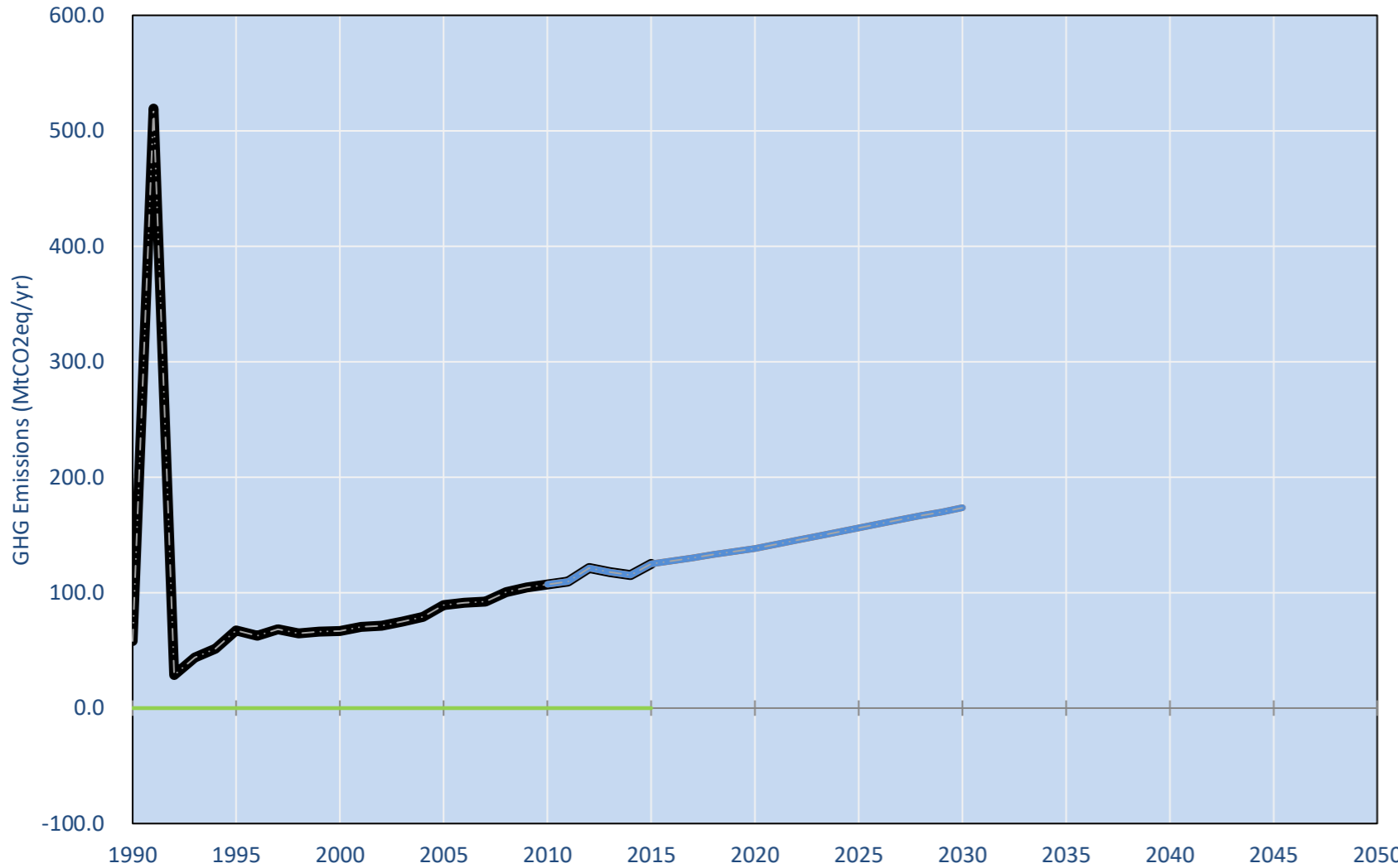
32.1t #4

33.4t #4

34.8t #6

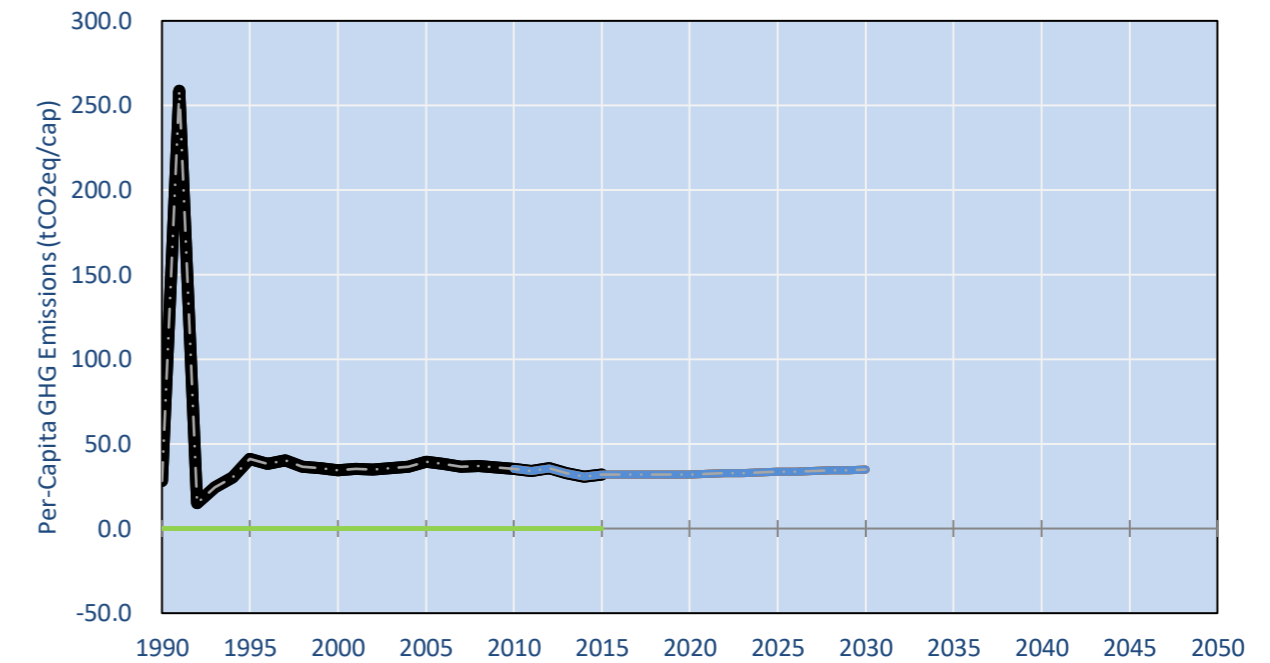
INDC Submitted: 25/11/2015

GHG Emissions

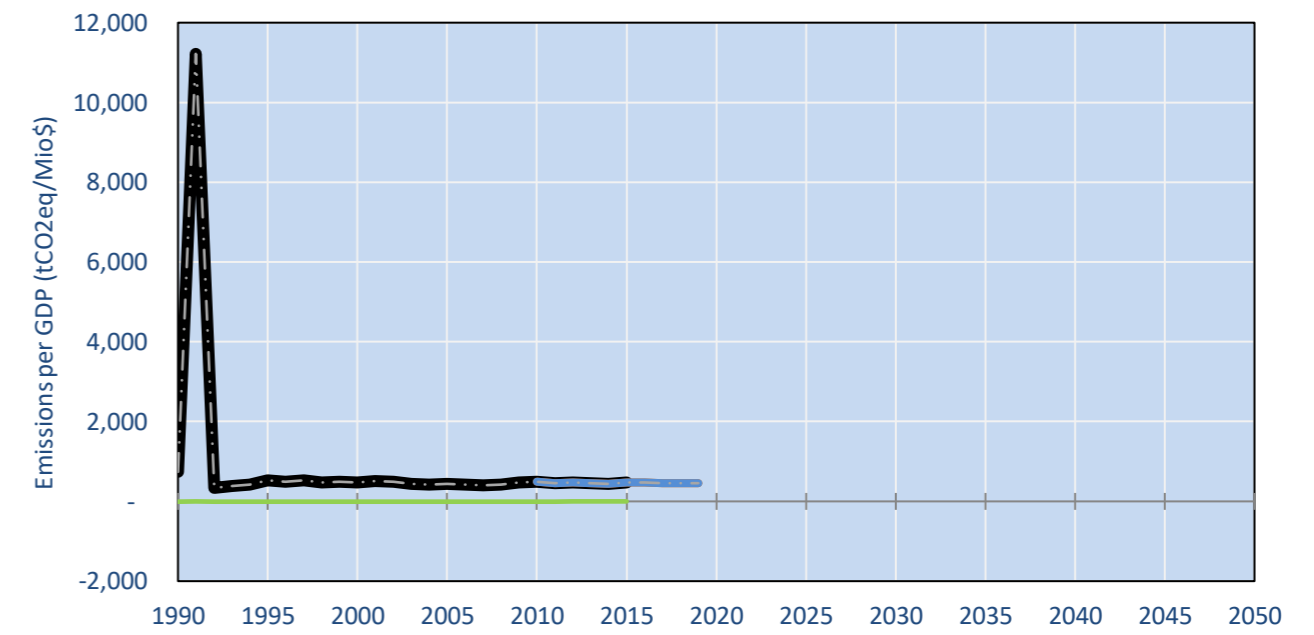


- Reference Total GHG excl. LULUCF
- Historical Covered Emissions, incl. LULUCF, if covered.
- LOW INDC Covered Emissions, incl. LULUCF if covered
- LOW INDC Covered + Non-Covered Emissions, excl. LULUCF
- HIGH INDC Covered Emissions, incl. LULUCF
- HIGH INDC Covered + Non-Covered Emissions, excl. LULUCF
- HIGH Cancun Pledges
- Reference LULUCF Emissions
- LOW INDC Levels
- LOW INDC Covered Emissions, excl. LULUCF
- HIGH INDC Levels
- HIGH INDC Covered Emissions, excl. LULUCF
- LOW Cancun Pledges
- Not-covered GHG excl. LULUCF (Region Projection)

Per-Capita Emissions



GHG Emissions per GDP



2015 Total GHG Emissions excl. LULUCF

By Gas:

CO₂ 86.9%
CH₄ 11.2%
N₂O 0.7%
F-gases 1.2%

By Sector:

Cat. 1 Energy 92.9%
Cat. 2, 3, 6 & 7 5.6%
Cat. 4. Agriculture 0.3%
F-gases 1.2%

GHG Emissions

	1990	2000	2005	2010	2015	2020	2025	2030
(MtCO ₂ eq/yr in GWP SAR)						low high	low high	low high
Assumed LULUCF Accounting Credits (-)/Debits (+)								
INDC covered LULUCF Emissions	-	-	-	-	-	-	-	-
INDC covered Emissions excl. LULUCF	-	-	-	-	-	-	-	-
Total GHG excl. LULUCF	58	67	89	107	125	138 138	156 156	174 174
Total GHG incl. LULUCF	58	67	89	107	125	138 138	156 156	174 174

Relative GHG Emissions

	1990	2000	2005	2010	2015	2020	2025	2030
Total excl. LULUCF						low high	low high	low high
Relative 1990	100%	115%	153%	184%	215%	238% 238%	268% 268%	298% 298%
Relative 2000	87%	100%	133%	161%	187%	207% 207%	234% 234%	260% 260%
Relative 2005	65%	75%	100%	121%	140%	155% 155%	175% 175%	195% 195%
Relative 2010	54%	62%	83%	100%	116%	129% 129%	145% 145%	162% 162%
Relative 2015	47%	53%	71%	86%	100%	111% 111%	125% 125%	139% 139%

Per-Capita Emissions

	1990	2000	2005	2010	2015	2020	2025	2030
Total excl. LULUCF						low high	low high	low high
Population (Mio)	2	2	2	3	4	4 4	5 5	5 5
Per-Capita Emissions (tCO ₂ eq/cap)	28.2	34.6	39.3	35.1	32.1	32.0 32.0	33.4 33.4	34.8 34.8
Relative 1990	100%	122%	139%	124%	114%	113% 113%	118% 118%	123% 123%
Relative 2000	82%	100%	114%	101%	93%	93% 93%	97% 97%	101% 101%
Relative 2005	72%	88%	100%	89%	82%	81% 81%	85% 85%	89% 89%
Relative 2010	81%	99%	112%	100%	92%	91% 91%	95% 95%	99% 99%
Relative 2015	88%	108%	122%	109%	100%	100% 100%	104% 104%	108% 108%

Data Sources:

Cat1_CO2 PRIMAPHIST17
Cat2367_CO2 PRIMAPHIST17
Cat4_CO2 PRIMAPHIST17
Cat5_CO2 PRIMAPHIST17
Cat1_CH4 PRIMAPHIST17
Cat2367_CH4 PRIMAPHIST17
Cat4_CH4 PRIMAPHIST17
Cat5_CH4 PRIMAPHIST17
Cat1_N2O PRIMAPHIST17
Cat2367_N2O PRIMAPHIST17
Cat4_N2O PRIMAPHIST17
Cat5_N2O PRIMAPHIST17
Cat0_HFCs PRIMAPHIST17
Cat0_PFCs PRIMAPHIST17
Cat0_SF6 PRIMAPHIST17
Population UN 2015 Population Projections MEDIUM
GDP IMF WEO 2015, PPP adjusted GDP, constant 2009 prices...
IPCC WG3 Scenario IMAGE | AMPERE2-550-FullTech-HST
PRIMAPHIST16 description: www.pik-potsdam.de/primap-live/primap-hist/
Gratefully acknowledged in particular: PRIMAP, CAIT, CDIAC, EDGAR, IPCC, IEA, UNEP, HEP, AMPERE Team and comments on earlier versions, in particular by Giacomo Grassi. Errors and misjudgements are our own. Malte Meinshausen & Ryan Alexander; The "Fiji COP23" Edition was enabled through support via the BMUB project UM14 41 4060
This Factsheet is available at www.climatecollege.unimelb.edu.au/indc-factsheets. Check out as well: www.climateactiontracker.org, www.mitigation-contributions.org, cait.wri.org, infographics.pbl.nl/indc, live.primap.org, www.unep.org/climatechange/pledgepipeline, and our twitter feed @ClimateCollege
climatecollege.unimelb.edu.au
AUSTRALIAN-GERMAN CLIMATE & ENERGY COLLEGE

Various 'fair' contributions for a global 'least-cost' 2°C path (total incl. LULUCF):

2025 rel. 2010:		2030 rel. 2010:	
LEADER	#N/A	LEADER	#N/A
CDC	-6%	CDC	-16%
ECPC50	-58%	ECPC50	-97%
ECPC90	-17%	ECPC90	-34%
GDR	0%	GDR	-5%
INDC HIGH	45%	INDC HIGH	62%
INDC LOW	45%	INDC LOW	62%



Shown fair contributions only indicative

"Fair" contributions for a global 'least-cost' 2°C track:

- LEADER Leader
- CDC Common-but-diff. per-cap. convergence
- ECPC50 Eq. cum. Per-capita since 1950
- ECPC90 Eq. cum. Per-capita since 1990
- GDR Greenhouse Development Rights
- #N/A No available data