

Jamaica

Per-Capita Emissions in 2030 rel. 2015 (excl. LULUCF): **+78%**

NDC 2025

NDC 2030

2015 World Rank

2025 World Rank

2030 World Rank

Share of World Emissions excl. LULUCF (Rank):

0.0% #146

0.0% #135

0.0% #137

Per-Capita Emissions (tCO2eq/cap)

3t #120

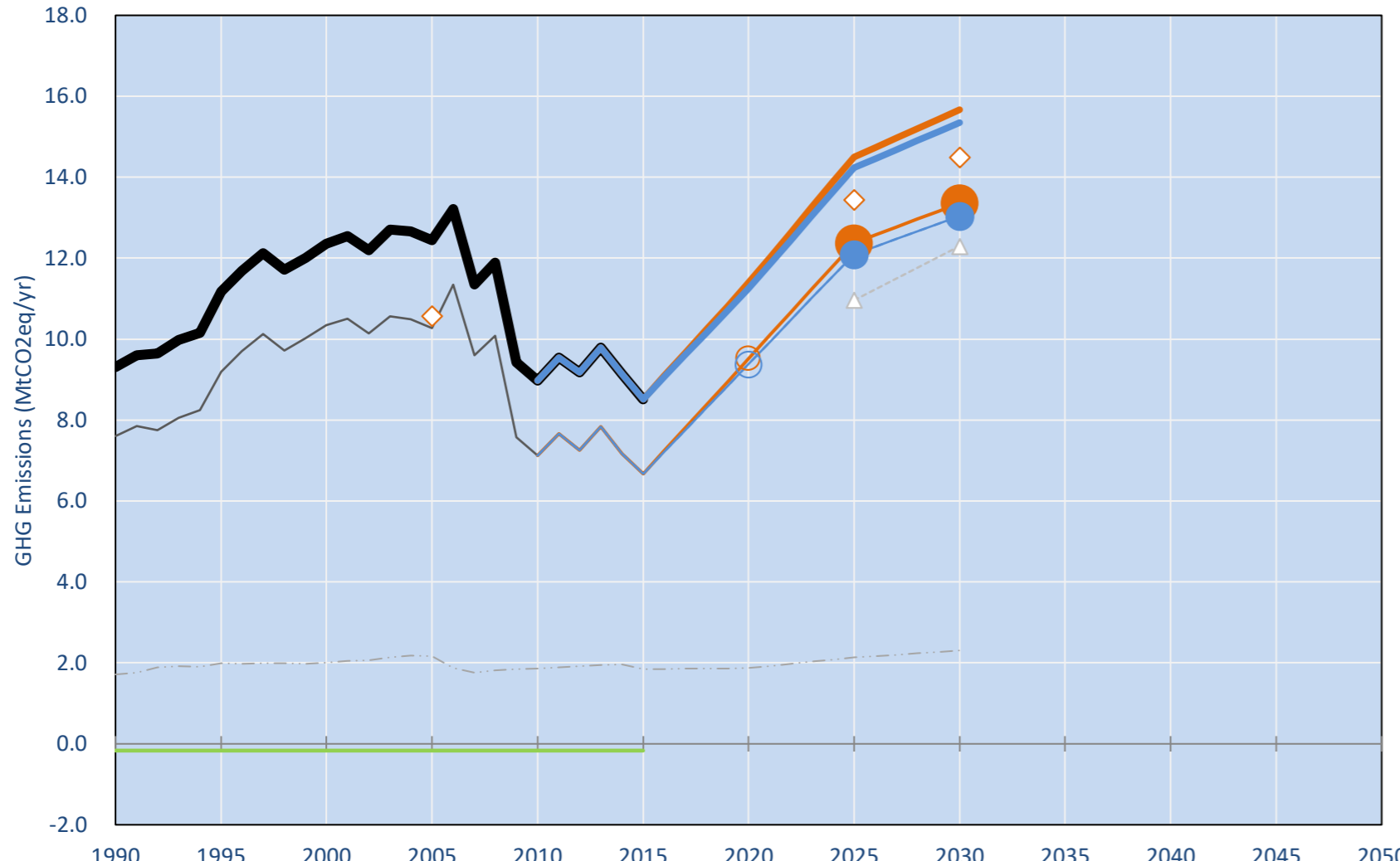
5t #91

5.4t #85

NDC: 7.8% below BAU by 2030 (unc) and 10% below BAU by 2030 (cond) with specified BAU and target levels in MtCO2eq. . ()

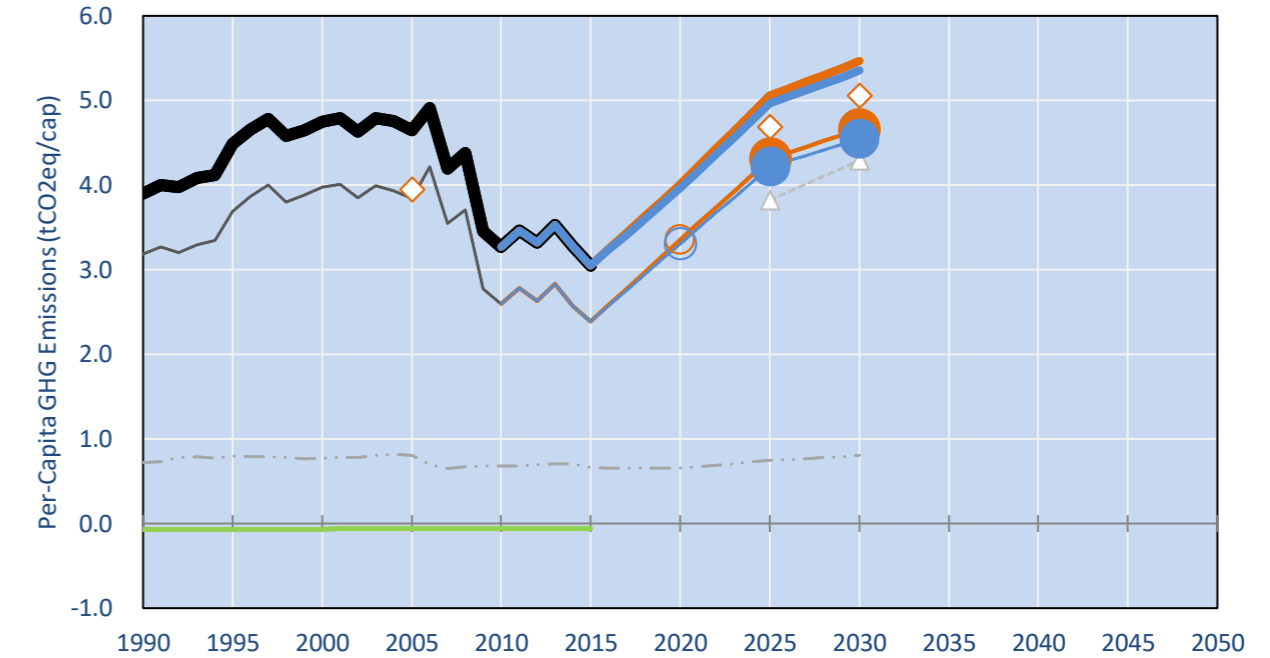
INDC Submitted: 27/11/2015

GHG Emissions

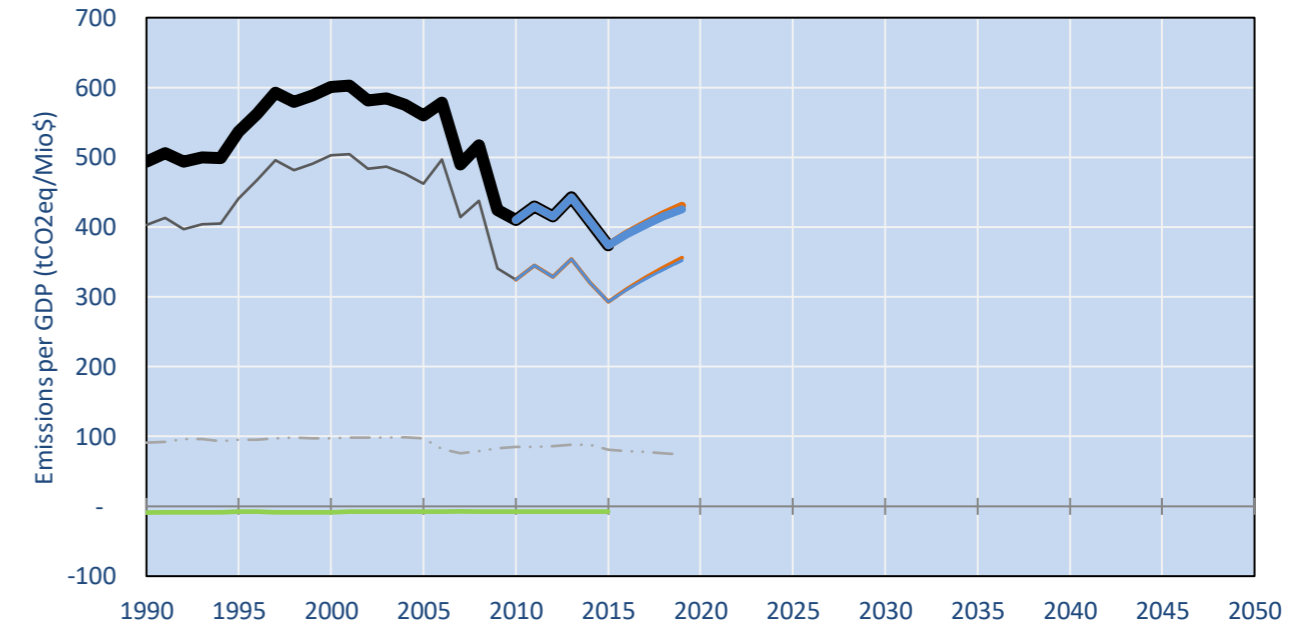


- Reference Total GHG excl. LULUCF
- Historical Covered Emissions, incl. LULUCF, if covered.
- LOW INDC Covered Emissions, incl. LULUCF if covered
- LOW INDC Covered + Non-Covered Emissions, excl. LULUCF
- HIGH INDC Covered Emissions, incl. LULUCF
- HIGH INDC Covered + Non-Covered Emissions, excl. LULUCF
- HIGH Cancun Pledges
- Reference LULUCF Emissions
- LOW INDC Levels
- LOW INDC Covered Emissions, excl. LULUCF
- HIGH INDC Levels
- HIGH INDC Covered Emissions, excl. LULUCF
- LOW Cancun Pledges
- Jamaica INDC baseyr + BAU
- Regional/Gas-specific BAU
- Not-covered GHG excl. LULUCF (Region Projection)

Per-Capita Emissions



GHG Emissions per GDP



2015 Total GHG Emissions excl. LULUCF

By Gas:

CO2 81.9%
CH4 9.3%
N2O 7.6%
F-gases 1.2%

By Sector:

Cat. 1 Energy 78.4%
Cat. 2, 3, 6 & 7 14.7%
Cat 4. Agriculture 5.7%
F-gases 1.2%

GHG Emissions

	1990	2000	2005	2010	2015	2020		2025		2030	
(MtCO2eq/yr in GWP SAR)						low	high	low	high	low	high
Assumed LULUCF Accounting Credits (-)/Debits (+)											
NDC covered LULUCF Emissions											
NDC covered Emissions excl. LULUCF	8	10	10	7	7	10	9	12	12	13	13
Total GHG excl. LULUCF	9	12	12	9	9	11	11	15	14	16	15
Total GHG incl. LULUCF	9	12	12	9	8	11	11	14	14	16	15

Relative GHG Emissions

	1990	2000	2005	2010	2015	2020		2025		2030	
Total excl. LULUCF						low	high	low	high	low	high
Relative 1990	100%	133%	134%	96%	91%	122%	121%	156%	153%	168%	165%
Relative 2000	75%	100%	101%	73%	69%	92%	91%	117%	115%	127%	124%
Relative 2005	75%	99%	100%	72%	68%	92%	90%	117%	114%	126%	123%
Relative 2010	104%	138%	139%	100%	95%	127%	125%	162%	159%	175%	171%
Relative 2015	109%	145%	146%	105%	100%	134%	132%	170%	167%	184%	180%

Per-Capita Emissions

	1990	2000	2005	2010	2015	2020		2025		2030	
Total excl. LULUCF						low	high	low	high	low	high
Population (Mio)	2	3	3	3	3	3	3	3	3	3	3
Per-Capita Emissions (tCO2eq/cap)	3.9	4.8	4.6	3.3	3.0	4.0	4.0	5.1	5.0	5.5	5.4
Relative 1990	100%	122%	119%	84%	78%	103%	102%	130%	127%	140%	137%
Relative 2000	82%	100%	98%	69%	64%	84%	83%	106%	104%	115%	113%
Relative 2005	84%	102%	100%	70%	66%	86%	85%	109%	107%	118%	115%
Relative 2010	119%	145%	142%	100%	93%	123%	121%	155%	152%	167%	164%
Relative 2015	128%	156%	152%	107%	100%	132%	130%	166%	163%	179%	176%

Data Sources:

Cat1_CO2	PRIMAPHIST17	Cat5A1_CO2	UNFCCC CRF + Nat. Comms.
Cat2367_CO2	PRIMAPHIST17	Cat5A2_CO2	UNFCCC CRF + Nat. Comms.
Cat4_CO2	PRIMAPHIST17	Cat5LtoNonFL_CO2	UNFCCC CRF + Nat. Comms.
Cat5_CO2	PRIMAPHIST17	Cat5GMCMWMM_C	UNFCCC CRF
Cat1_CH4	PRIMAPHIST17	Cat5A1ForestFires	UNFCCC Cat5 + EDGAR(IPCC Database)
Cat2367_CH4	PRIMAPHIST17	Cat5A1HWP_CO2	UNFCCC CRF + Nat. Comms.
Cat4_CH4	PRIMAPHIST17	Cat5bisA_CO2	UNFCCC CRF + NATCOMM.
Cat5_CH4	PRIMAPHIST17	Cat5bisB_CO2	UNFCCC CRF + NATCOMM.
Cat1_N2O	PRIMAPHIST17	Cat5bisC_CO2	UNFCCC CRF + NATCOMM.
Cat2367_N2O	PRIMAPHIST17	Cat5bisD_CO2	UNFCCC CRF + NATCOMM.
Cat4_N2O	PRIMAPHIST17	Cat5bisE_CO2	UNFCCC CRF + NATCOMM.
Cat5_N2O	PRIMAPHIST17	PRO_WM_Cat5_G	UNFCCC Annex I Reports
Cat0_HFCs	PRIMAPHIST17	Metric	GWP SAR
Cat0_PFCs	PRIMAPHIST17		
Cat0_SF6	PRIMAPHIST17		
Population	UN 2015 Population Projections MEDIUM		
GDP	IMF WEO 2015, PPP adjusted GDP, constant 2009 prices...		
	IPCC WG3 Scenario IMAGE AMPERE2-550-FullTech-HST		
	PRIMAPHIST16 description: www.pik-potsdam.de/primap-live/primap-hist/		
	Gratefully acknowledged in particular: PRIMAP, CAIT, CDIAC, EDGAR, IPCC, IEA, UNEP Gap Team, AMPERE Team and comments on earlier versions, in particular by Giacomo Grassi. Errors and misjudgements are our own. Malte Meinshausen & Ryan Alexander; The "Fiji COP23" Edition was enabled through support via the BMUB project UM14 41 4060		

This Factsheet is available at www.climatecollege.unimelb.edu.au/indc-factsheets. Check out as well: www.climateactiontracker.org, www.mitigation-contributions.org, cait.wri.org, infographics.pbl.nl/indc/, live.primap.org, www.unep.org/climatechange/pledgepipeline, and our twitter feed @ClimateCollege

climatecollege.unimelb.edu.au

AUSTRALIAN-GERMAN CLIMATE & ENERGY COLLEGE

Various 'fair' contributions for a global 'least-cost' 2°C path (total incl. LULUCF):

	2025 rel. 2010:	2030 rel. 2010:
LEADER	#N/A	LEADER #N/A
CDC	#N/A	CDC #N/A
ECPC50	#N/A	ECPC50 #N/A
ECPC90	#N/A	ECPC90 #N/A
GDR	#N/A	GDR #N/A
INDC HIGH	60%	INDC HIGH 72%
INDC LOW	63%	INDC LOW 76%

More info on www.mitigation-contributions.org

"Fair" contributions for a global 'least-cost' 2°C track:

LEADER Leader
CDC Common-but-diff. per-cap. convergence
ECPC50 Eq. cum. Per-capita since 1950
ECPC90 Eq. cum. Per-capita since 1990
GDR Greenhouse Development Rights
#N/A No available data