

Iceland

Per-Capita Emissions in 2030 rel. 2015 (excl. LULUCF): **-57%**

NDC 2025

NDC 2030

2015 World Rank

2025 World Rank

2030 World Rank

Share of World Emissions excl. LULUCF (Rank):

0.0% #157

0.0% #164

0.0% #168

Per-Capita Emissions (tCO2eq/cap)

13.4t #22

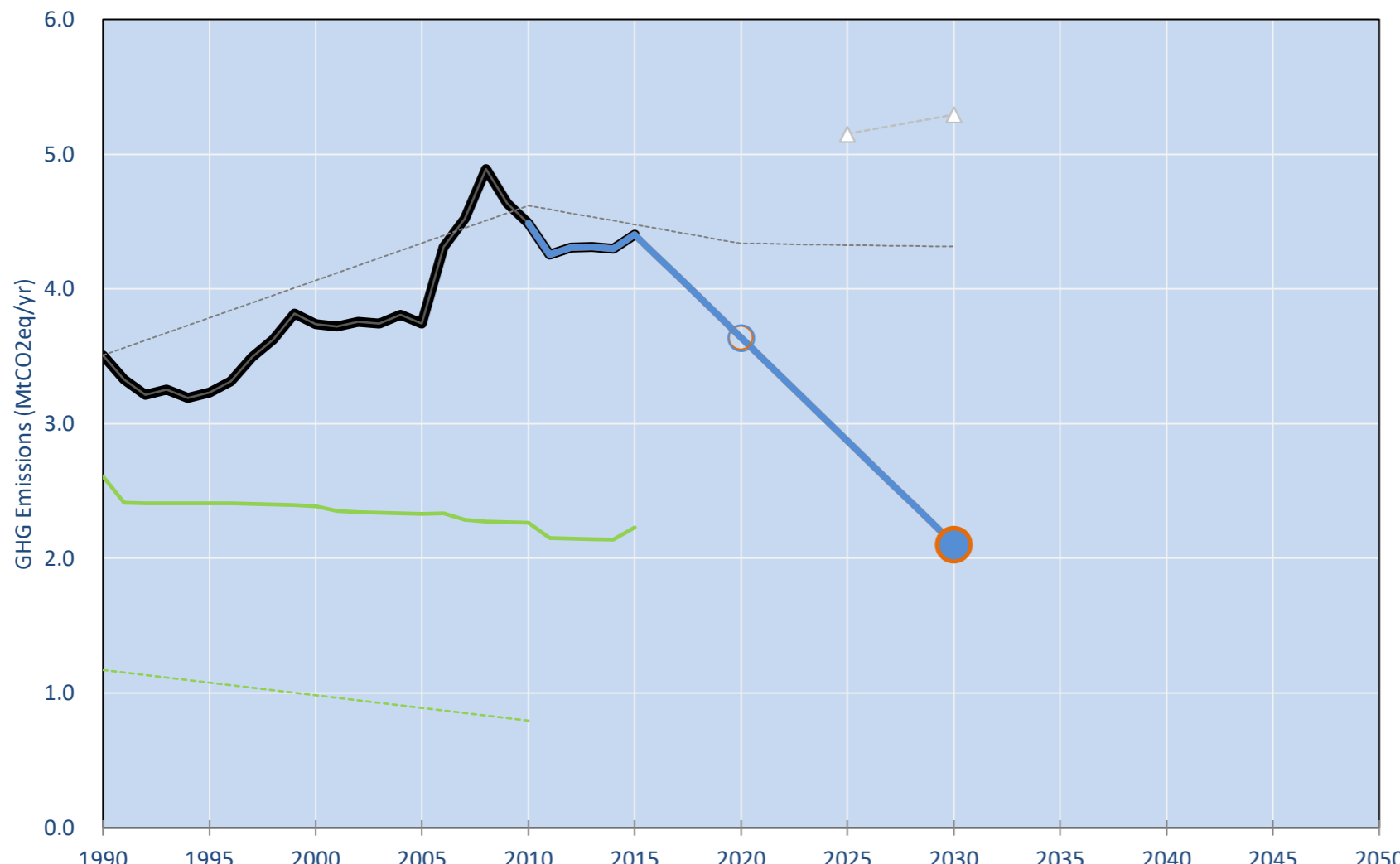
8.1t #51

5.8t #84

NDC: 40% reduction of greenhouse gas emissions by 2030 compared to 1990 levels. (IPCC 2006 Guidelines)

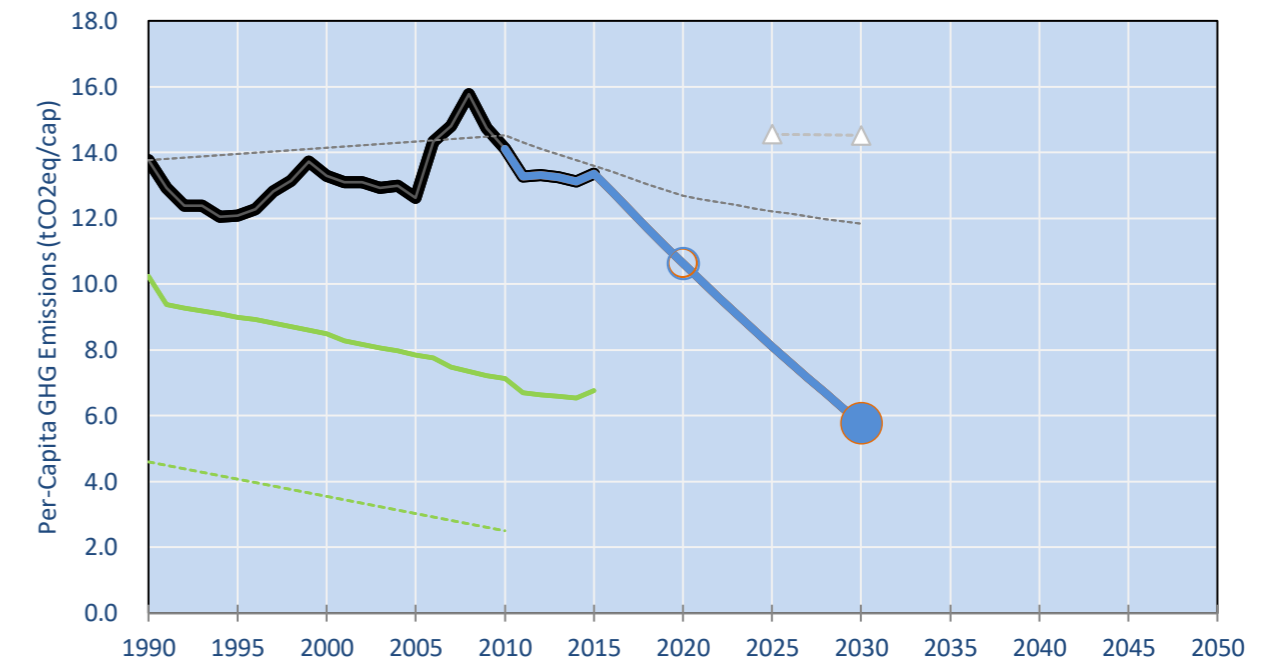
INDC Submitted: 30/06/2015

GHG Emissions

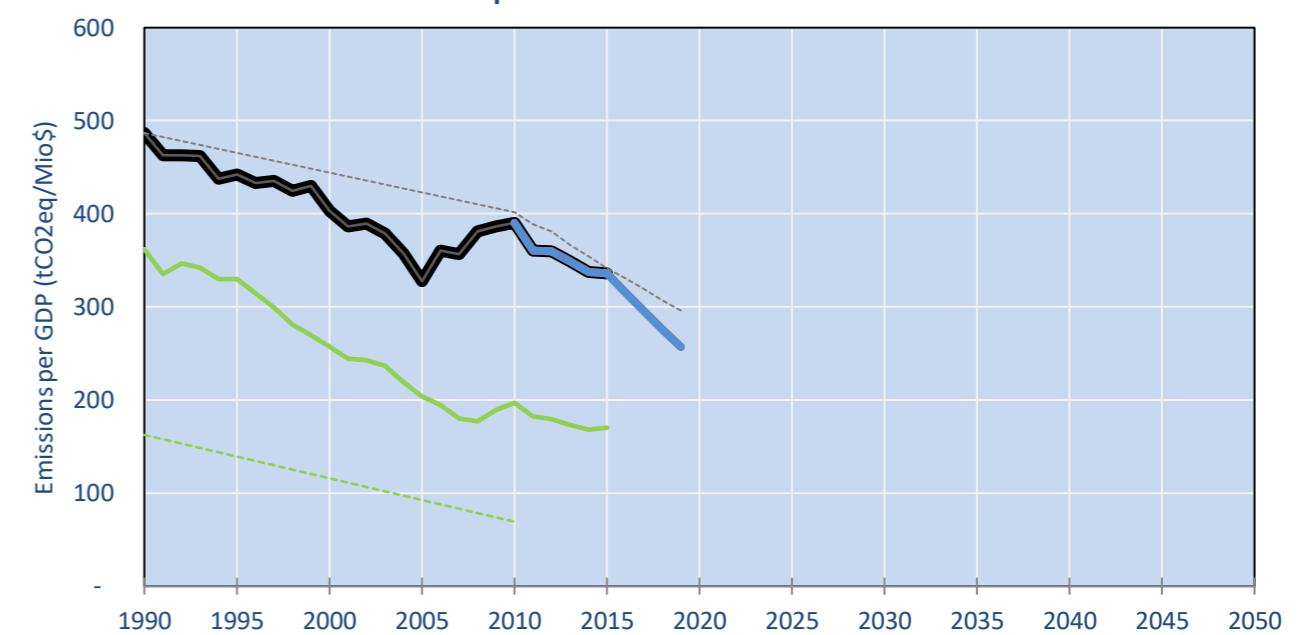


- Reference Total GHG excl. LULUCF
- Historical Covered Emissions, incl. LULUCF, if covered.
- LOW INDC Covered Emissions, incl. LULUCF if covered
- LOW INDC Covered + Non-Covered Emissions, excl. LULUCF
- HIGH INDC Covered Emissions, incl. LULUCF
- HIGH INDC Covered + Non-Covered Emissions, excl. LULUCF
- HIGH Cancun Pledges
- Reference LULUCF Emissions
- LOW INDC Levels
- LOW INDC Covered Emissions, excl. LULUCF
- HIGH INDC Levels
- HIGH INDC Covered Emissions, excl. LULUCF
- LOW Cancun Pledges
- WM Total excl. LULUCF Projections
- WM LULUCF Projections
- Regional/Gas-specific BAU
- Not-covered GHG excl. LULUCF (Region Projection)

Per-Capita Emissions

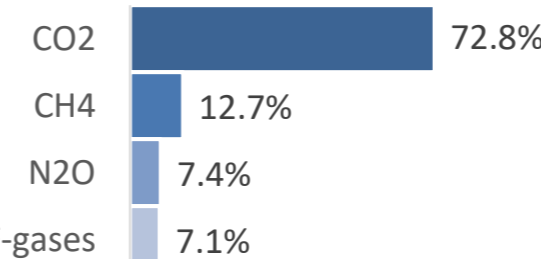


GHG Emissions per GDP

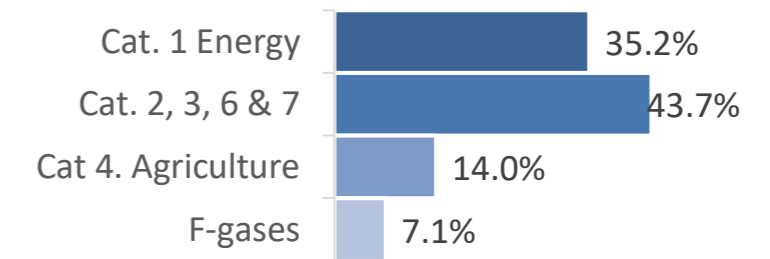


2015 Total GHG Emissions excl. LULUCF

By Gas:



By Sector:



GHG Emissions

	1990	2000	2005	2010	2015	2020	2025	2030	
(MtCO2eq/yr in GWP AR4)						low	high	low	high
Assumed LULUCF Accounting Credits (-)/Debits (+)						0	0		
NDC covered LULUCF Emissions									
NDC covered Emissions excl. LULUCF	4	4	4	4	4	4	4	3	3
Total GHG excl. LULUCF	4	4	4	4	4	4	4	3	3
Total GHG incl. LULUCF	6	6	6	7	7	4	4	5	5

Relative GHG Emissions

	1990	2000	2005	2010	2015	2020	2025	2030	
Total excl. LULUCF						low	high	low	high
Relative 1990	100%	107%	107%	128%	125%	104%	104%	82%	82%
Relative 2000	94%	100%	100%	120%	118%	97%	97%	77%	77%
Relative 2005	94%	100%	100%	120%	118%	97%	97%	77%	77%
Relative 2010	78%	83%	83%	100%	98%	81%	81%	64%	64%
Relative 2015	80%	85%	85%	102%	100%	83%	83%	65%	65%

Per-Capita Emissions

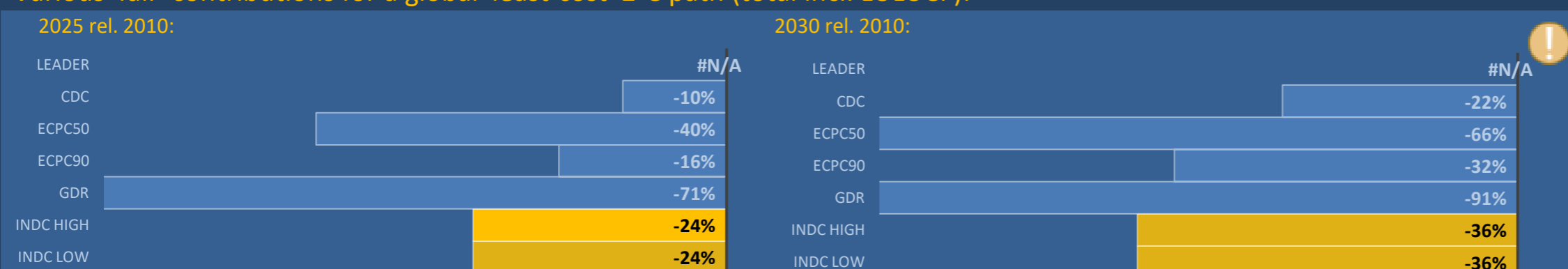
	1990	2000	2005	2010	2015	2020	2025	2030	
Total excl. LULUCF						low	high	low	high
Population (Mio)	0	0	0	0	0	0	0	0	0
Per-Capita Emissions (tCO2eq/cap)	13.8	13.3	12.6	14.1	13.4	10.6	10.6	8.1	8.1
Relative 1990	100%	97%	92%	102%	97%	77%	77%	59%	59%
Relative 2000	104%	100%	95%	106%	100%	80%	80%	61%	61%
Relative 2005	109%	105%	100%	112%	106%	84%	84%	64%	64%
Relative 2010	98%	94%	89%	100%	95%	75%	75%	57%	57%
Relative 2015	103%	100%	94%	106%	100%	80%	80%	61%	61%

Data Sources:

Cat1_CO2	PRIMAPHIST17	Cat5A1_CO2	UNFCCC CRF + Nat. Comms.
Cat2367_CO2	PRIMAPHIST17	Cat5A2_CO2	UNFCCC CRF + Nat. Comms.
Cat4_CO2	PRIMAPHIST17	Cat5LtoNonFL_CO2	UNFCCC CRF + Nat. Comms.
Cat5_CO2	PRIMAPHIST17	Cat5GMCMWMM_C	UNFCCC CRF + Nat. Comms.
Cat1_CH4	PRIMAPHIST17	Cat5A1ForestFires	UNFCCC Cat5 + EDGAR(IPCC Database)
Cat2367_CH4	PRIMAPHIST17	Cat5A1HWP_CO2	UNFCCC CRF + Nat. Comms.
Cat4_CH4	PRIMAPHIST17	Cat5bisA_CO2	UNFCCC CRF + NATCOMM.
Cat5_CH4	PRIMAPHIST17	Cat5bisB_CO2	UNFCCC CRF + NATCOMM.
Cat1_N2O	PRIMAPHIST17	Cat5bisC_CO2	UNFCCC CRF + NATCOMM.
Cat2367_N2O	PRIMAPHIST17	Cat5bisD_CO2	UNFCCC CRF + NATCOMM.
Cat4_N2O	PRIMAPHIST17	Cat5bisE_CO2	UNFCCC CRF + NATCOMM.
Cat5_N2O	PRIMAPHIST17	PRO_WM_Cat5_G	UNFCCC Annex I Reports
Cat0_HFCs	PRIMAPHIST17	Metric	GWP AR4
Cat0_PFCs	PRIMAPHIST17		
Cat0_SF6	PRIMAPHIST17		
Population	UN 2015 Population Projections MEDIUM		
GDP	IMF WEO 2015, PPP adjusted GDP, constant 2009 prices...		
	IPCC WG3 Scenario IMAGE AMPERE2-550-FullTech-HST		
	PRIMAPHIST16 description: www.pik-potsdam.de/primap-live/primap-hist/		
	Gratefully acknowledged in particular: PRIMAP, CAIT, CDIAC, EDGAR, IPCC, IEA, UNEP GAP Team, AMPERE Team and comments on earlier versions, in particular by Giacomo Grassi. Errors and misjudgements are our own. Malte Meinshausen & Ryan Alexander; The "Fiji COP23" Edition was enabled through support via the BMUB project UM14 41 4060		
	This Factsheet is available at www.climatecollege.unimelb.edu.au/indc-factsheets. Check out as well: www.climateactiontracker.org, www.mitigation-contributions.org, cait.wri.org, infographics.pbl.nl/indc, live.primap.org, www.unep.org/climatechange/pledgepipeline, and our twitter feed @ClimateCollege		



Various 'fair' contributions for a global 'least-cost' 2°C path (total incl. LULUCF):



More info on www.mitigation-contributions.org

Shown fair contributions only indicative
"Fair" contributions for a global 'least-cost' 2°C track:
LEADER Leader
CDC Common-but-diff. per-cap. convergence
ECPC50 Eq. cum. Per-capita since 1950
ECPC90 Eq. cum. Per-capita since 1990
GDR Greenhouse Development Rights
#N/A No available data