

Haiti

Per-Capita Emissions in 2030 rel. 2015 (excl. LULUCF): **+46%**

NDC 2025

NDC 2030

2015 World Rank

2025 World Rank

2030 World Rank

Share of World Emissions excl. LULUCF (Rank):

0.0% #143

0.0% #135

0.0% #134

Per-Capita Emissions (tCO2eq/cap)

1t #190

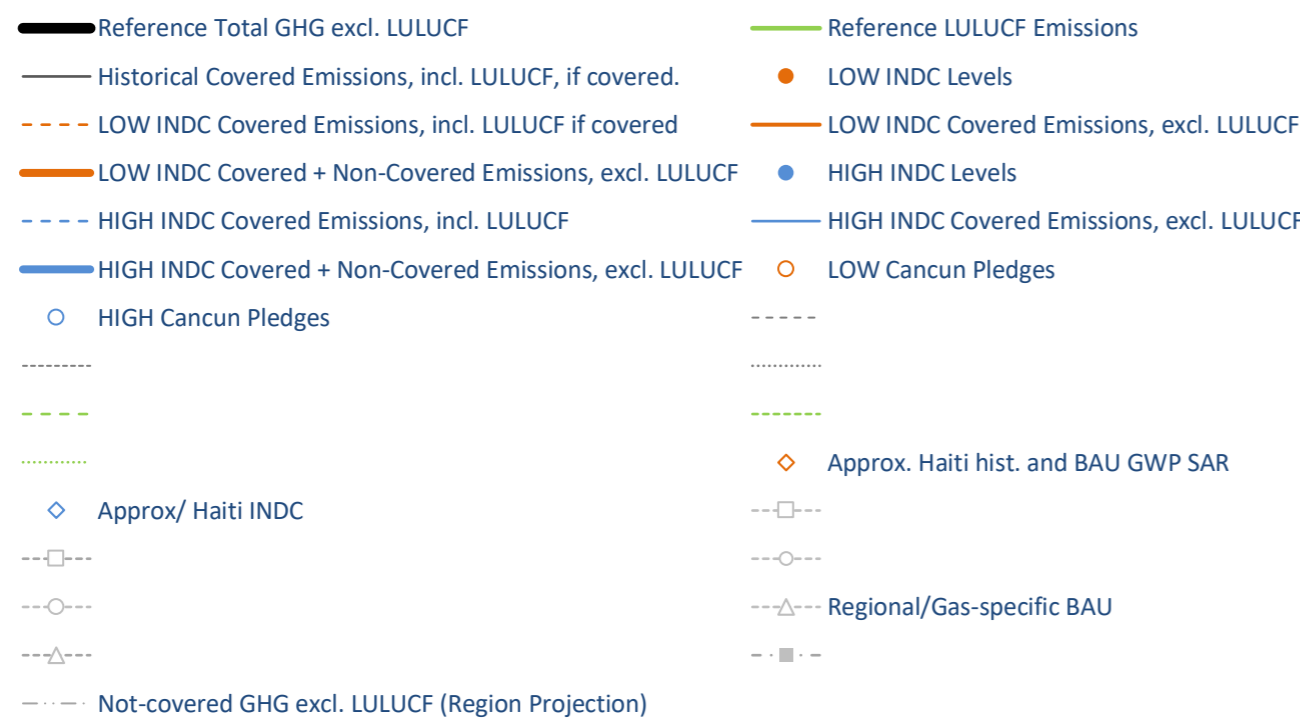
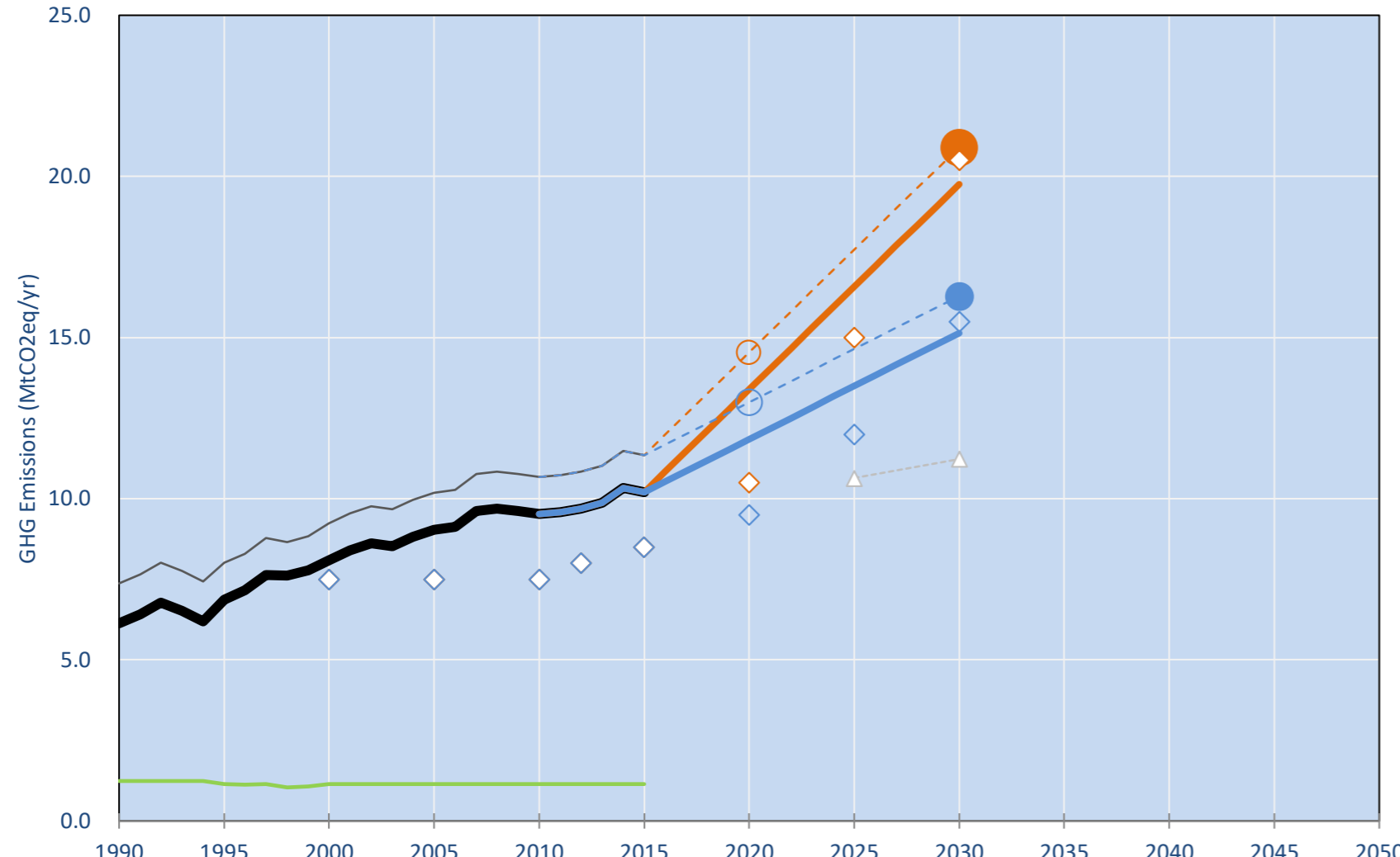
1.3t #179

1.4t #172

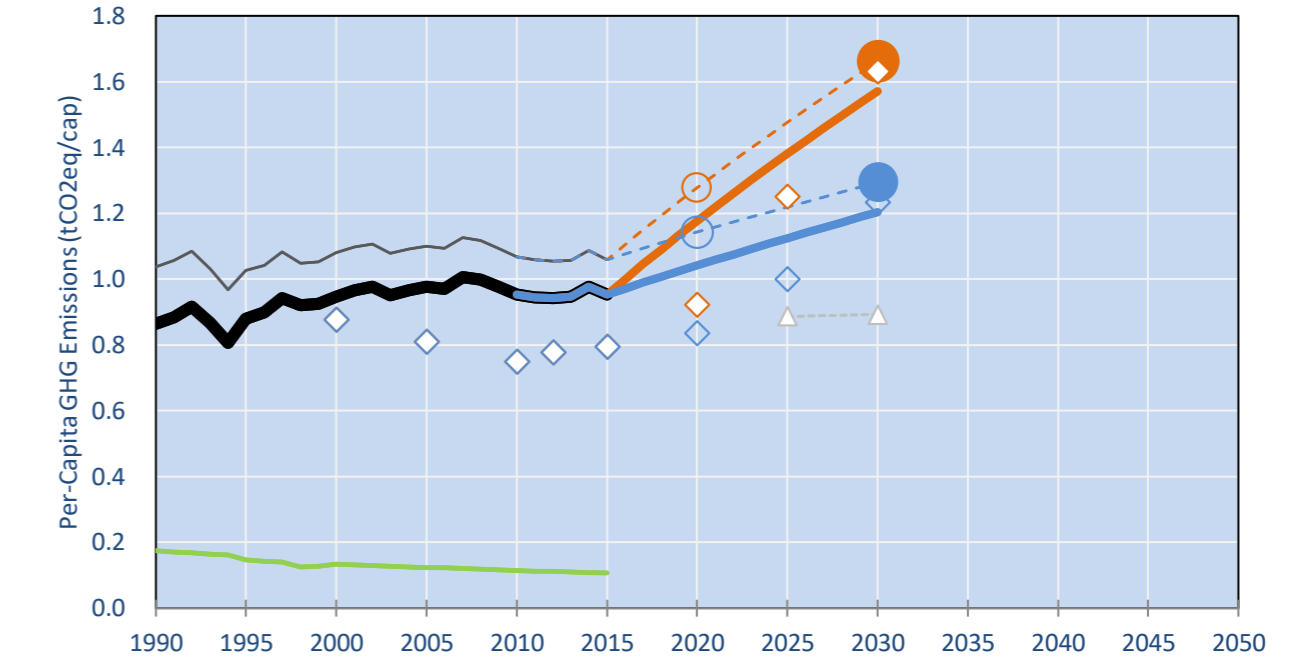
NDC: Reduction of 5% GHG emissions compared to 2010 levels Conditional target: 26% GHG emission reduction pending on international support. (GWP SAR)

INDC Submitted: 30/09/2015

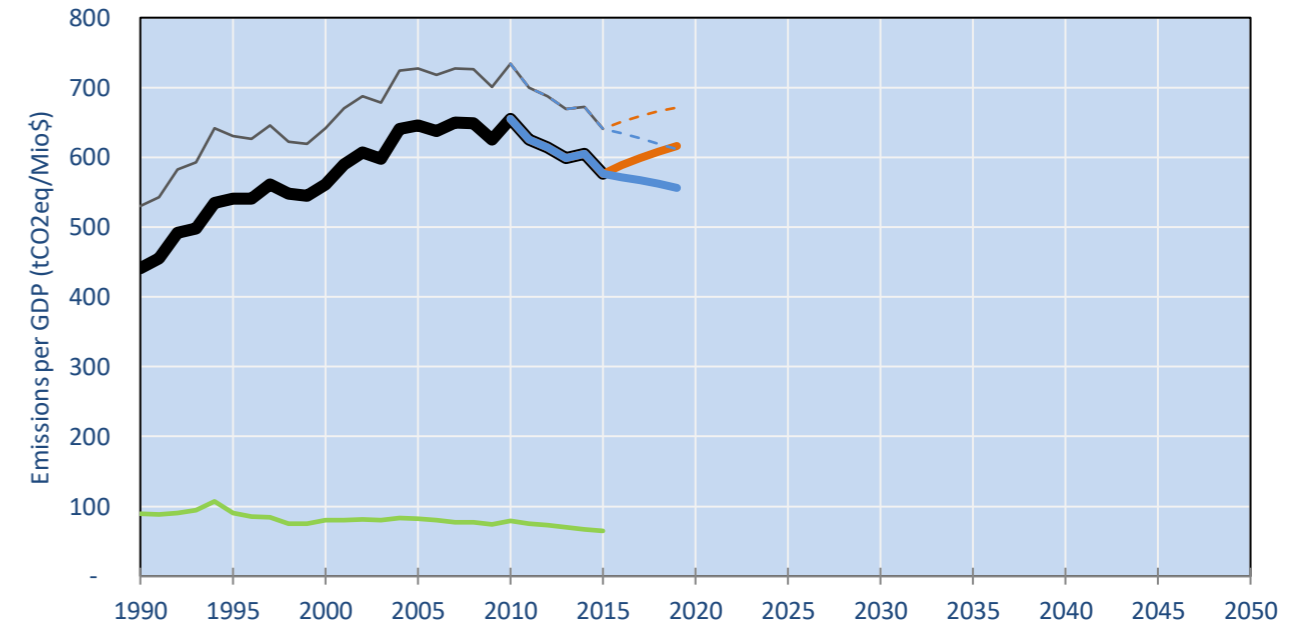
GHG Emissions



Per-Capita Emissions

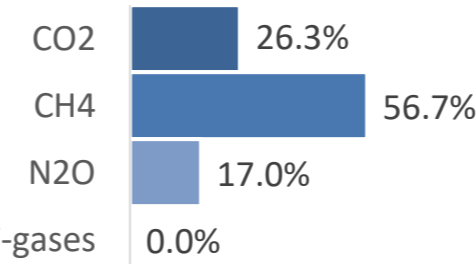


GHG Emissions per GDP

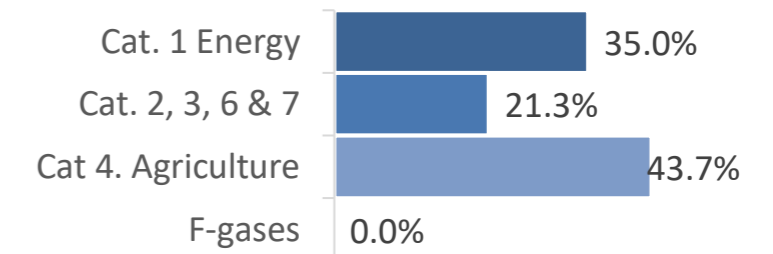


2015 Total GHG Emissions excl. LULUCF

By Gas:



By Sector:



GHG Emissions

| | 1990 | 2000 | 2005 | 2010 | 2015 | 2020 | | 2025 | | 2030 | |
|--|------|------|------|------|------|------|------|------|------|------|------|
| | | | | | | low | high | low | high | low | high |
| (MtCO2eq/yr in GWP AR4) | | | | | | | | | | | |
| Assumed LULUCF Accounting Credits (-)/Debits (+) | | | | | | | | | | | |
| NDC covered LULUCF Emissions | 1 | 1 | 1 | 1 | 1 | 1 | 1 | 1 | 1 | 1 | 1 |
| NDC covered Emissions excl. LULUCF | 6 | 8 | 9 | 10 | 10 | 13 | 12 | 17 | 13 | 20 | 15 |
| Total GHG excl. LULUCF | 6 | 8 | 9 | 10 | 10 | 13 | 12 | 17 | 13 | 20 | 15 |
| Total GHG incl. LULUCF | 7 | 9 | 10 | 11 | 11 | 15 | 13 | 18 | 15 | 21 | 16 |

Relative GHG Emissions

| | 1990 | 2000 | 2005 | 2010 | 2015 | 2020 | | 2025 | | 2030 | |
|--------------------|------|------|------|------|------|------|------|------|------|------|------|
| | | | | | | low | high | low | high | low | high |
| Total excl. LULUCF | | | | | | | | | | | |
| Relative 1990 | 100% | 132% | 147% | 155% | 166% | 218% | 193% | 270% | 220% | 322% | 247% |
| Relative 2000 | 76% | 100% | 112% | 118% | 126% | 166% | 147% | 205% | 167% | 244% | 187% |
| Relative 2005 | 68% | 89% | 100% | 105% | 113% | 148% | 131% | 183% | 149% | 219% | 167% |
| Relative 2010 | 64% | 85% | 95% | 100% | 107% | 141% | 124% | 174% | 142% | 207% | 159% |
| Relative 2015 | 60% | 79% | 89% | 93% | 100% | 131% | 116% | 162% | 132% | 194% | 148% |

Per-Capita Emissions

| | 1990 | 2000 | 2005 | 2010 | 2015 | 2020 | | 2025 | | 2030 | |
|-----------------------------------|------|------|------|------|------|------|------|------|------|------|------|
| | | | | | | low | high | low | high | low | high |
| Total excl. LULUCF | | | | | | | | | | | |
| Population (Mio) | 7 | 9 | 9 | 10 | 11 | 11 | 11 | 12 | 12 | 13 | 13 |
| Per-Capita Emissions (tCO2eq/cap) | 0.9 | 0.9 | 1.0 | 1.0 | 1.0 | 1.2 | 1.0 | 1.4 | 1.1 | 1.6 | 1.2 |
| Relative 1990 | 100% | 109% | 113% | 110% | 110% | 136% | 121% | 160% | 130% | 182% | 139% |
| Relative 2000 | 91% | 100% | 103% | 101% | 101% | 124% | 110% | 146% | 119% | 166% | 127% |
| Relative 2005 | 89% | 97% | 100% | 98% | 98% | 121% | 107% | 141% | 115% | 161% | 123% |
| Relative 2010 | 91% | 99% | 102% | 100% | 100% | 124% | 109% | 145% | 118% | 165% | 126% |
| Relative 2015 | 91% | 99% | 102% | 100% | 100% | 124% | 109% | 145% | 118% | 165% | 126% |

Data Sources:

Cat1_CO2 PRIMAPHIST17
 Cat2367_CO2 PRIMAPHIST17
 Cat4_CO2 PRIMAPHIST17
 Cat5_CO2 PRIMAPHIST17
 Cat1_CH4 PRIMAPHIST17
 Cat2367_CH4 PRIMAPHIST17
 Cat4_CH4 PRIMAPHIST17
 Cat5_CH4 PRIMAPHIST17
 Cat1_N2O PRIMAPHIST17
 Cat2367_N2O PRIMAPHIST17
 Cat4_N2O PRIMAPHIST17
 Cat5_N2O PRIMAPHIST17
 Cat0_HFCs PRIMAPHIST17
 Cat0_PFCs PRIMAPHIST17
 Cat0_SF6 PRIMAPHIST17
 Population UN 2015 Population Projections MEDIUM
 GDP IMF WEO 2015, PPP adjusted GDP, constant 2009 prices...
 IPCC WG3 Scenario IMAGE | AMPERE2-550-FullTech-HST
 PRIMAPHIST16 description: www.pik-potsdam.de/primap-live/primap-hist/
 Gratefully acknowledged in particular: PRIMAP, CAIT, CDIAC, EDGAR, IPCC, IEA, UNEP Gap Team, AMPERE Team and comments on earlier versions, in particular by Giacomo Grassi. Errors and misjudgements are our own. Malte Meinshausen & Ryan Alexander; The "Fiji COP23" Edition was enabled through support via the BMUB project UM14 41 4060
 This Factsheet is available at www.climatecollege.unimelb.edu.au/indc-factsheets. Check out as well: www.climateactiontracker.org, www.mitigation-contributions.org, cait.wri.org, infographics.pbl.nl/indc, live.primap.org, www.unep.org/climatechange/pledgepipeline, and our twitter feed @ClimateCollege
 climatecollege.unimelb.edu.au
 AUSTRALIAN-GERMAN CLIMATE & ENERGY COLLEGE

Various 'fair' contributions for a global 'least-cost' 2°C path (total incl. LULUCF):

More info on www.mitigation-contributions.org

| | 2025 rel. 2010: | 2030 rel. 2010: | | 2025 rel. 2010: | 2030 rel. 2010: |
|-----------|-----------------|-----------------|-----------|-----------------|-----------------|
| LEADER | #N/A | #N/A | LEADER | #N/A | #N/A |
| CDC | #N/A | #N/A | CDC | #N/A | #N/A |
| ECPC50 | #N/A | #N/A | ECPC50 | #N/A | #N/A |
| ECPC90 | #N/A | #N/A | ECPC90 | #N/A | #N/A |
| GDR | #N/A | #N/A | GDR | #N/A | #N/A |
| INDC HIGH | 37% | 53% | INDC HIGH | 53% | 96% |
| INDC LOW | 66% | 96% | INDC LOW | 96% | 96% |

"Fair" contributions for a global 'least-cost' 2°C track:
 LEADER Leader
 CDC Common-but-diff. per-cap. convergence
 ECPC50 Eq. cum. Per-capita since 1950
 ECPC90 Eq. cum. Per-capita since 1990
 GDR Greenhouse Development Rights
 #N/A No available data