



Grenada

Per-Capita Emissions in 2030 rel. 2015 (excl. LULUCF):



-15%

NDC 2025

NDC 2030

2015 World Rank

2025 World Rank

2030 World Rank

0% rel. BAU of 0.2 Mt

0% rel. BAU of 0.2 Mt

Share of World Emissions excl. LULUCF (Rank):

0.0% #182

0.0% #184

0.0% #183

-30% rel.2010

-40% rel.2010

Per-Capita Emissions (tCO2eq/cap)

3.3t #115

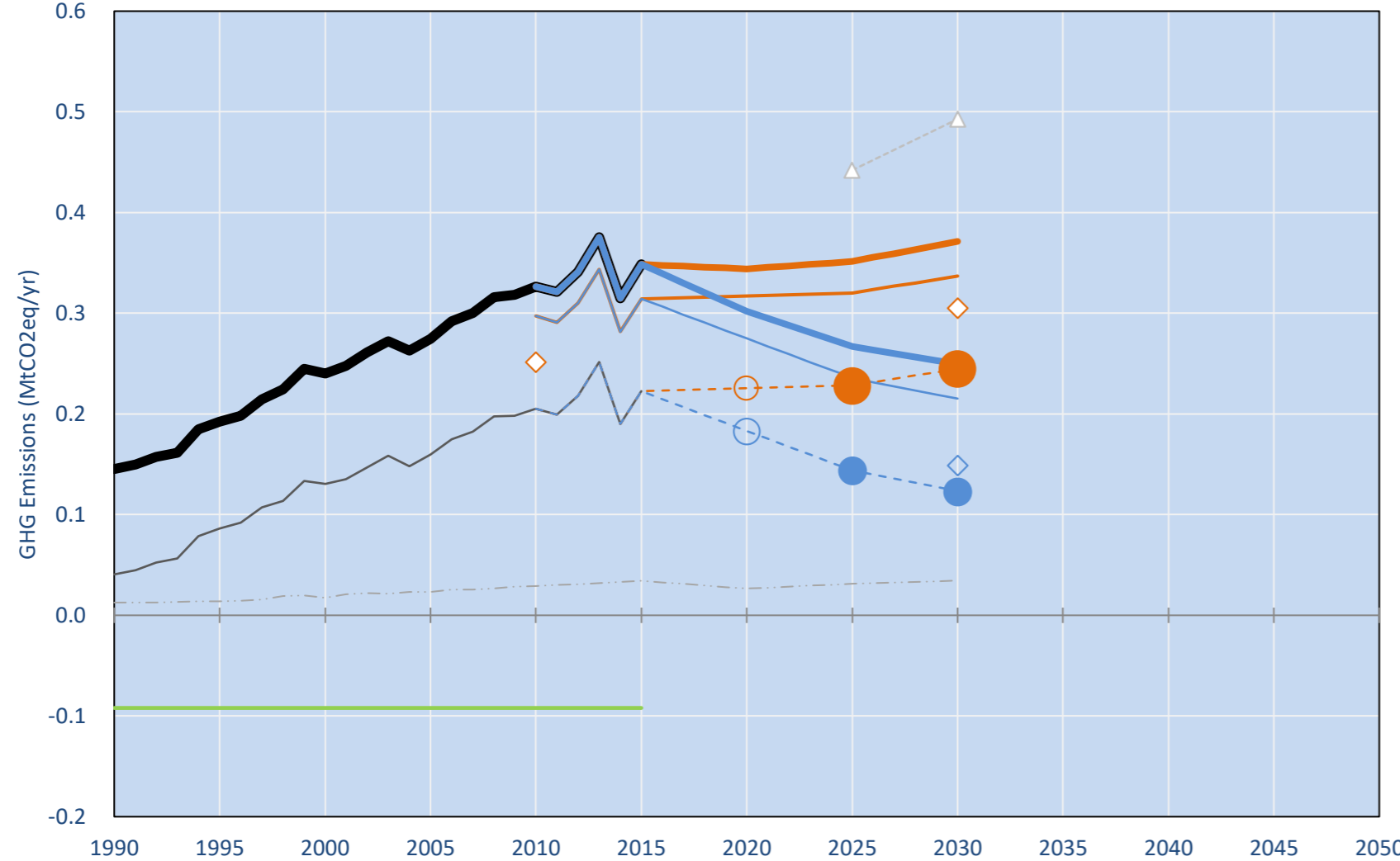
2.8t #129

2.8t #126

NDC: Grenada commits to reducing its GHG emissions by 30% from 2010 levels by 2025, with an indicative reduction of 40% from 2010 levels by 2030. (GWP AR4)

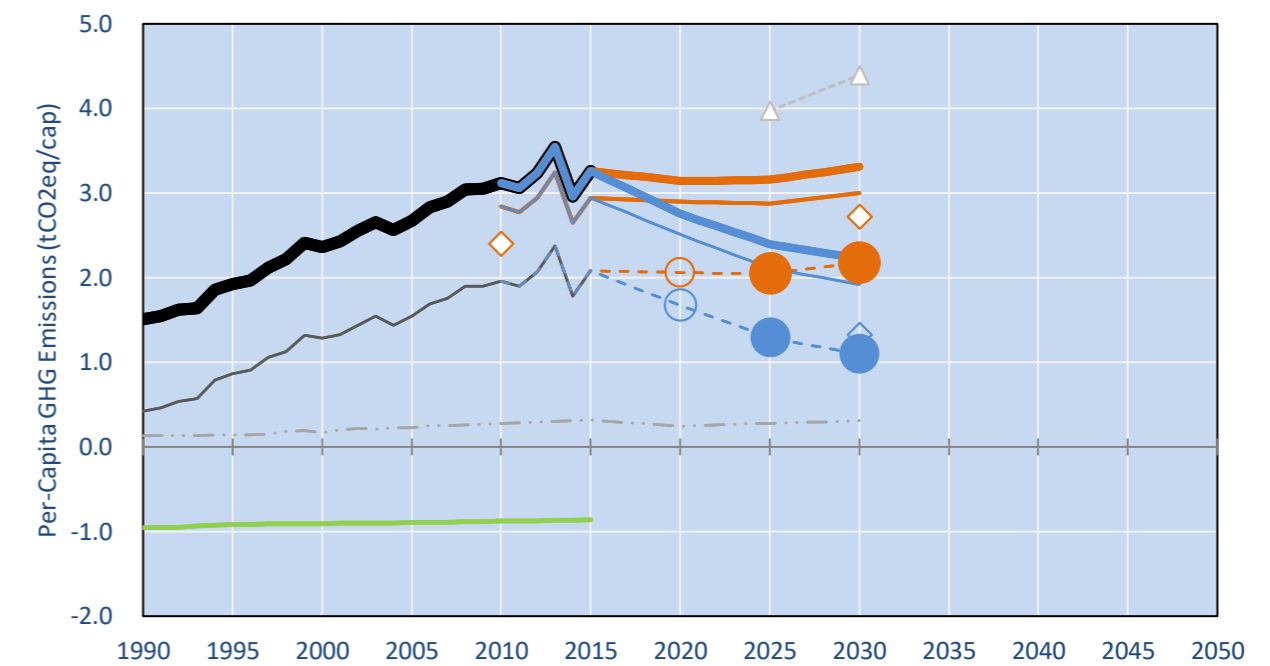
INDC Submitted: 21/09/2015

GHG Emissions

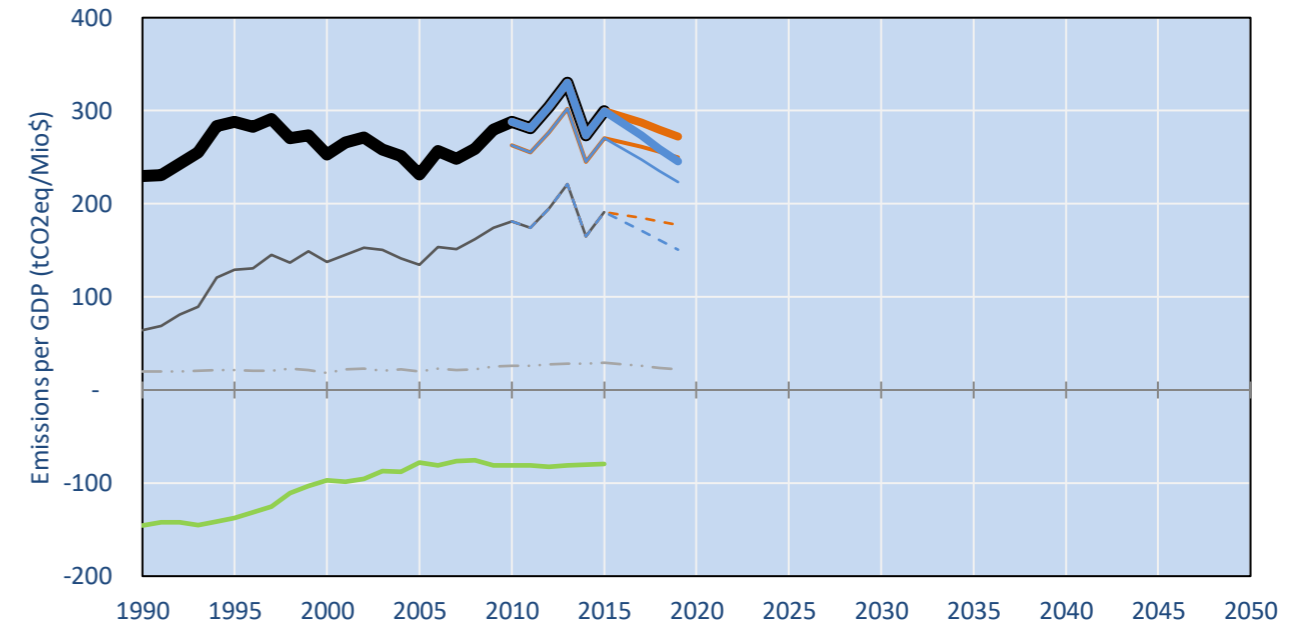


- Reference Total GHG excl. LULUCF
- Historical Covered Emissions, incl. LULUCF, if covered.
- LOW INDC Covered Emissions, incl. LULUCF if covered
- LOW INDC Covered + Non-Covered Emissions, excl. LULUCF
- HIGH INDC Covered Emissions, incl. LULUCF
- HIGH INDC Covered + Non-Covered Emissions, excl. LULUCF
- HIGH Cancun Pledges
- Reference LULUCF Emissions
- LOW INDC Levels
- LOW INDC Covered Emissions, excl. LULUCF
- HIGH INDC Levels
- HIGH INDC Covered Emissions, excl. LULUCF
- LOW Cancun Pledges
- Grenada INDC BAU
- Regional/Gas-specific BAU
- Not-covered GHG excl. LULUCF (Region Projection)

Per-Capita Emissions



GHG Emissions per GDP



2015 Total GHG Emissions excl. LULUCF

By Gas:

CO2	78.9%
CH4	11.3%
N2O	9.0%
F-gases	0.8%

By Sector:

Cat. 1 Energy	81.0%
Cat. 2, 3, 6 & 7	13.9%
Cat 4. Agriculture	4.2%
F-gases	0.8%

GHG Emissions

	1990	2000	2005	2010	2015	2020		2025		2030	
(MtCO2eq/yr in GWP SAR)						low	high	low	high	low	high
Assumed LULUCF Accounting Credits (-)/Debits (+)											
NDC covered LULUCF Emissions	0	0	0	0	0	0	0	0	0	0	0
NDC covered Emissions excl. LULUCF	0	0	0	0	0	0	0	0	0	0	0
Total GHG excl. LULUCF	0	0	0	0	0	0	0	0	0	0	0
Total GHG incl. LULUCF	0	0	0	0	0	0	0	0	0	0	0

Relative GHG Emissions

	1990	2000	2005	2010	2015	2020		2025		2030	
Total excl. LULUCF						low	high	low	high	low	high
Relative 1990	100%	165%	189%	225%	240%	237%	208%	242%	184%	256%	172%
Relative 2000	61%	100%	114%	136%	145%	143%	126%	146%	111%	155%	104%
Relative 2005	53%	87%	100%	119%	127%	125%	110%	128%	97%	135%	91%
Relative 2010	45%	74%	84%	100%	107%	105%	92%	108%	82%	114%	77%
Relative 2015	42%	69%	79%	94%	100%	99%	87%	101%	77%	107%	72%

Per-Capita Emissions

	1990	2000	2005	2010	2015	2020		2025		2030	
Total excl. LULUCF						low	high	low	high	low	high
Population (Mio)	0	0	0	0	0	0	0	0	0	0	0
Per-Capita Emissions (tCO2eq/cap)	1.5	2.4	2.7	3.1	3.3	3.1	2.8	3.2	2.4	3.3	2.2
Relative 1990	100%	157%	177%	207%	216%	208%	183%	209%	159%	219%	148%
Relative 2000	64%	100%	113%	132%	138%	133%	117%	134%	101%	140%	94%
Relative 2005	57%	89%	100%	117%	122%	118%	103%	118%	90%	124%	83%
Relative 2010	48%	76%	86%	100%	105%	101%	88%	101%	77%	106%	71%
Relative 2015	46%	72%	82%	96%	100%	96%	85%	97%	74%	101%	68%

Data Sources:

Cat1_CO2	PRIMAPHIST17	Cat5A1_CO2	UNFCCC CRF + Nat. Comms.
Cat2367_CO2	PRIMAPHIST17	Cat5A2_CO2	UNFCCC CRF + Nat. Comms.
Cat4_CO2	PRIMAPHIST17	Cat5LtoNonFL_CO2	UNFCCC CRF + Nat. Comms.
Cat5_CO2	PRIMAPHIST17	Cat5GCMCMWM_C	UNFCCC CRF
Cat1_CH4	PRIMAPHIST17	Cat5A1ForestFires	UNFCCC Cat5 + EDGAR(IPCC Database)
Cat2367_CH4	PRIMAPHIST17	Cat5A1HWP_CO2	UNFCCC CRF + Nat. Comms.
Cat4_CH4	PRIMAPHIST17	Cat5bisA_CO2	UNFCCC CRF + NATCOMM.
Cat5_CH4	PRIMAPHIST17	Cat5bisB_CO2	UNFCCC CRF + NATCOMM.
Cat1_N2O	PRIMAPHIST17	Cat5bisC_CO2	UNFCCC CRF + NATCOMM.
Cat2367_N2O	PRIMAPHIST17	Cat5bisD_CO2	UNFCCC CRF + NATCOMM.
Cat4_N2O	PRIMAPHIST17	Cat5bisE_CO2	UNFCCC CRF + NATCOMM.
Cat5_N2O	PRIMAPHIST17	PRO_WM_Cat5_G	UNFCCC Annex I Reports
Cat0_HFCs	PRIMAPHIST17	Metric	GWP SAR
Cat0_PFCs	PRIMAPHIST17		
Cat0_SF6	PRIMAPHIST17		
Population	UN 2015 Population Projections MEDIUM		
GDP	IMF WEO 2015, PPP adjusted GDP, constant 2009 prices...		
	IPCC WG3 Scenario IMAGE AMPERE2-550-FullTech-HST		
	PRIMAPHIST16 description: www.pik-potsdam.de/primap-live/primap-hist/		
	Gratefully acknowledged in particular: PRIMAP, CAIT, CDIAC, EDGAR, IPCC, IEA, UNEP Gap Team, AMPERE Team and comments on earlier versions, in particular by Giacomo Grassi. Errors and misjudgements are our own. Malte Meinshausen & Ryan Alexander; The "Fiji COP23" Edition was enabled through support via the BMUB project UM14 41 4060		
	This Factsheet is available at www.climatecollege.unimelb.edu.au/indc-factsheets. Check out as well: www.climateactiontracker.org, www.mitigation-contributions.org, cait.wri.org, infographics.pbl.nl/indc, live.primap.org, www.unep.org/climatechange/pledgepipeline, and our twitter feed @ClimateCollege		

climatecollege.unimelb.edu.au



Various 'fair' contributions for a global 'least-cost' 2°C path (total incl. LULUCF):

More info on www.mitigation-contributions.org

2025 rel. 2010:		2030 rel. 2010:	
LEADER	#N/A	LEADER	#N/A
CDC	#N/A	CDC	#N/A
ECPC50	#N/A	ECPC50	#N/A
ECPC90	#N/A	ECPC90	#N/A
GDR	#N/A	GDR	#N/A
INDC HIGH	-25%	INDC HIGH	-33%
INDC LOW	11%	INDC LOW	19%

"Fair" contributions for a global 'least-cost' 2°C track:

- LEADER: Leader
- CDC: Common-but-diff. per-cap. convergence
- ECPC50: Eq. cum. Per-capita since 1950
- ECPC90: Eq. cum. Per-capita since 1990
- GDR: Greenhouse Development Rights
- #N/A: No available data