



# Dominica

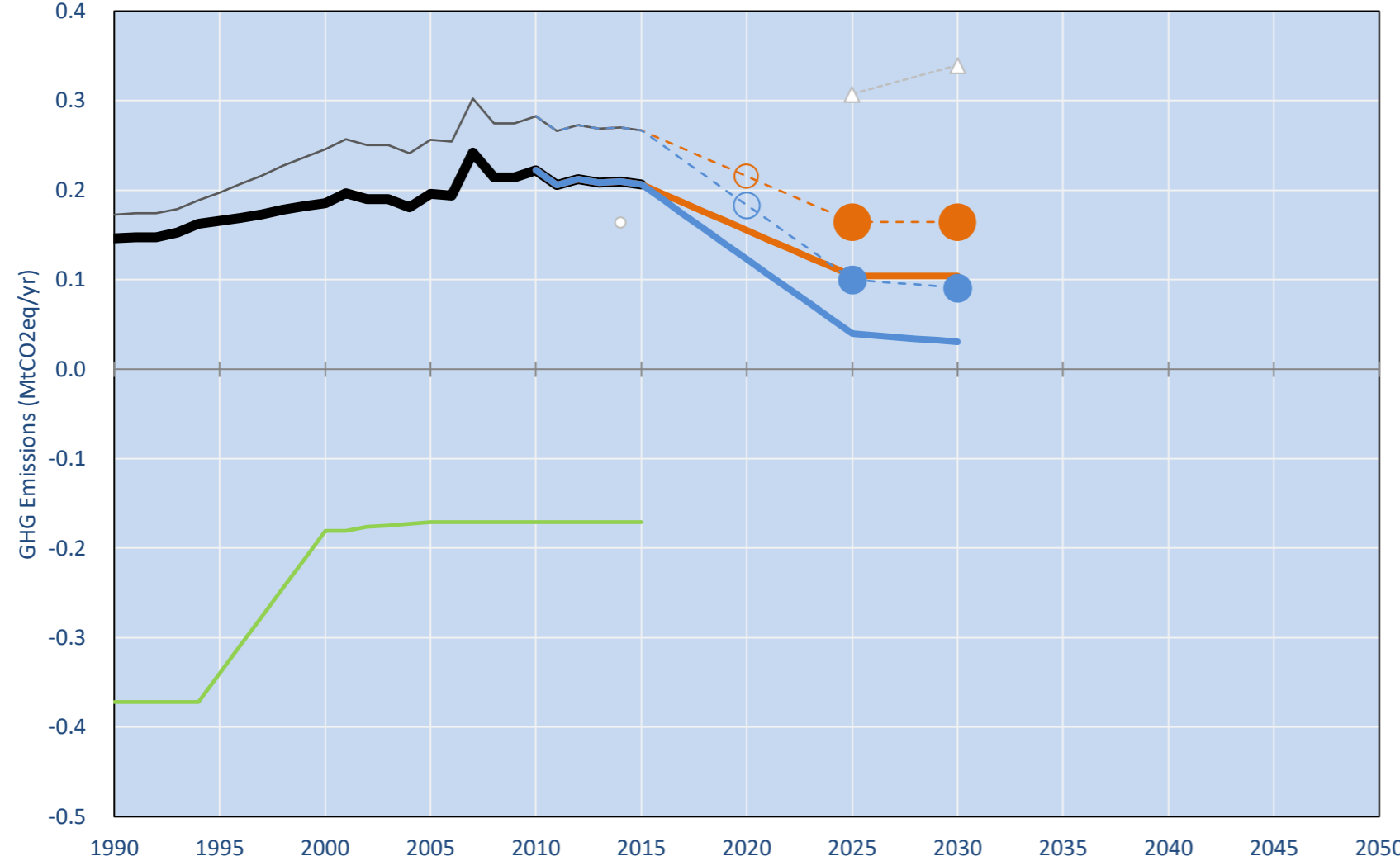
Per-Capita Emissions in 2030 rel. 2015 (excl. LULUCF): **-69%**

NDC 2025	NDC 2030	2015 World Rank	2025 World Rank	2030 World Rank
0% rel.2014	0% rel.2014	0.0% #187	0.0% #195	0.0% #196
-39% rel.2014	-45% rel.2014	2.8t #128	1t #185	0.9t #185

NDC: Commits to progressively reduce total gross greenhouse gas emissions below 2014 levels of 17.9% by 2020, 39.2% by 2025 and 44.7% by 2030. (GWP SAR)

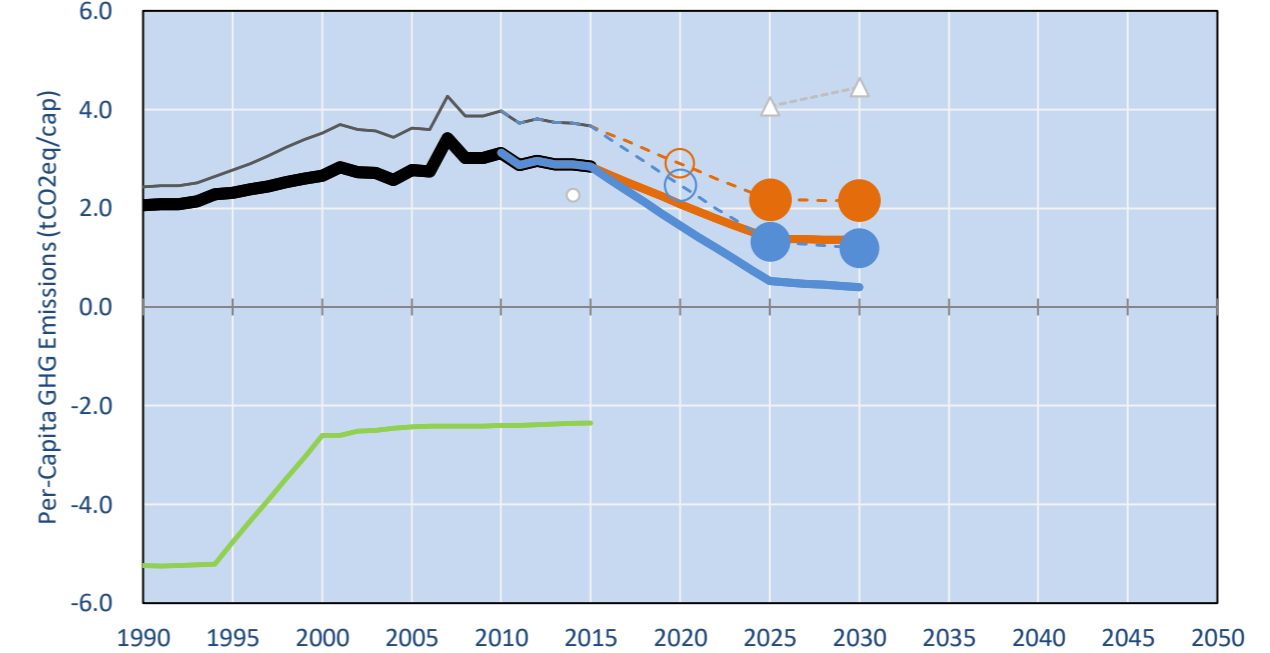
INDC Submitted: 29/09/2015

## GHG Emissions

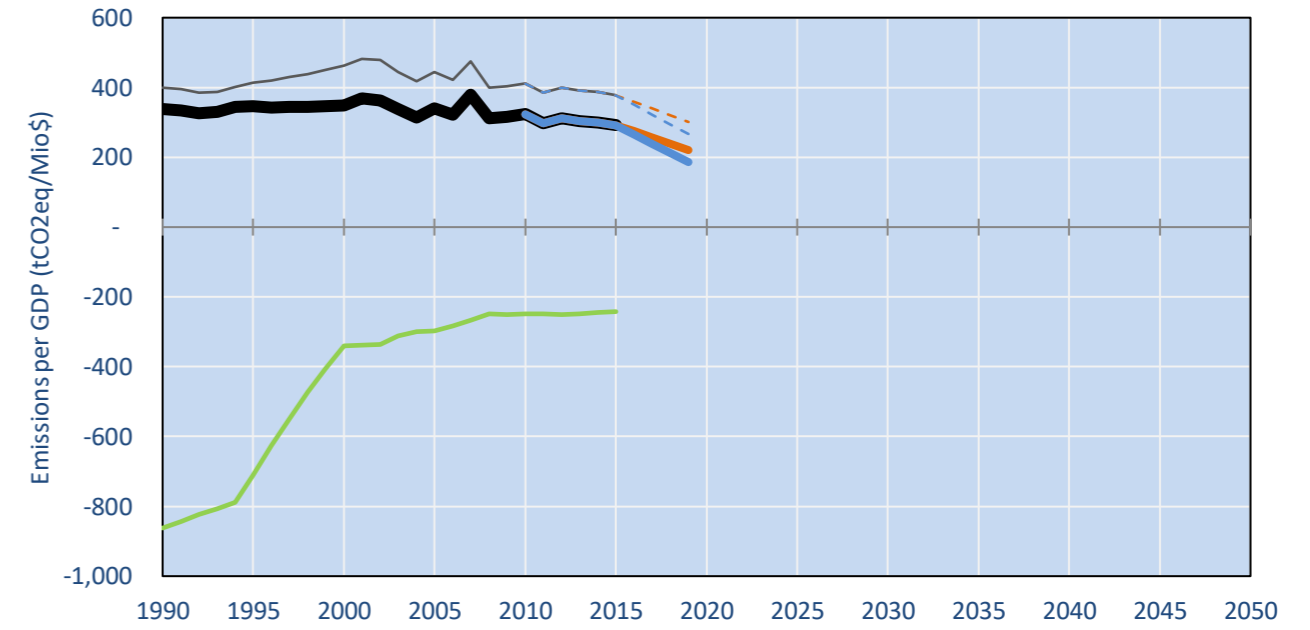


- Reference Total GHG excl. LULUCF
- Historical Covered Emissions, incl. LULUCF, if covered.
- LOW INDC Covered Emissions, incl. LULUCF if covered
- LOW INDC Covered + Non-Covered Emissions, excl. LULUCF
- HIGH INDC Covered Emissions, incl. LULUCF
- HIGH INDC Covered + Non-Covered Emissions, excl. LULUCF
- HIGH Cancun Pledges
- Reference LULUCF Emissions
- LOW INDC Levels
- LOW INDC Covered Emissions, excl. LULUCF
- HIGH INDC Levels
- HIGH INDC Covered Emissions, excl. LULUCF
- LOW Cancun Pledges
- Dominica INDC
- Regional/Gas-specific BAU
- Not-covered GHG excl. LULUCF (Region Projection)

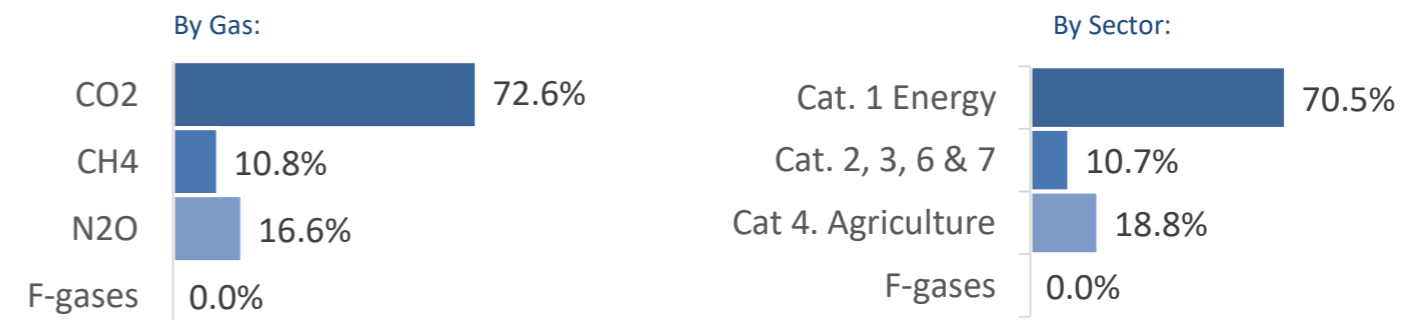
## Per-Capita Emissions



## GHG Emissions per GDP



## 2015 Total GHG Emissions excl. LULUCF



## GHG Emissions

	1990	2000	2005	2010	2015	2020	2025	2030	
(MtCO2eq/yr in GWP SAR)						low	high	low	high
Assumed LULUCF Accounting Credits (-)/Debits (+)									
NDC covered LULUCF Emissions	0	0	0	0	0	0	0	0	0
NDC covered Emissions excl. LULUCF	0	0	0	0	0	0	0	0	0
Total GHG excl. LULUCF	0	0	0	0	0	0	0	0	0
Total GHG incl. LULUCF	0	0	0	0	0	0	0	0	0

## Relative GHG Emissions

	1990	2000	2005	2010	2015	2020	2025	2030	
Total excl. LULUCF						low	high	low	high
Relative 1990	100%	127%	134%	152%	141%	106%	84%	71%	27%
Relative 2000	79%	100%	105%	120%	111%	84%	66%	56%	21%
Relative 2005	75%	95%	100%	114%	106%	79%	63%	53%	20%
Relative 2010	66%	83%	88%	100%	93%	70%	55%	47%	18%
Relative 2015	71%	90%	95%	108%	100%	75%	60%	50%	19%

## Per-Capita Emissions

	1990	2000	2005	2010	2015	2020	2025	2030	
Total excl. LULUCF						low	high	low	high
Population (Mio)	0	0	0	0	0	0	0	0	0
Per-Capita Emissions (tCO2eq/cap)	2.1	2.7	2.8	3.1	2.8	2.1	1.7	1.4	0.5
Relative 1990	100%	129%	134%	152%	138%	101%	80%	67%	25%
Relative 2000	77%	100%	104%	117%	107%	78%	62%	52%	20%
Relative 2005	74%	96%	100%	113%	102%	75%	60%	50%	19%
Relative 2010	66%	85%	89%	100%	91%	67%	53%	44%	17%
Relative 2015	73%	94%	98%	110%	100%	74%	58%	48%	18%

## Data Sources:

Cat1\_CO2 PRIMAPHIST17  
 Cat2367\_CO2 PRIMAPHIST17  
 Cat4\_CO2 PRIMAPHIST17  
 Cat5\_CO2 PRIMAPHIST17  
 Cat1\_CH4 PRIMAPHIST17  
 Cat2367\_CH4 PRIMAPHIST17  
 Cat4\_CH4 PRIMAPHIST17  
 Cat5\_CH4 PRIMAPHIST17  
 Cat1\_N2O PRIMAPHIST17  
 Cat2367\_N2O PRIMAPHIST17  
 Cat4\_N2O PRIMAPHIST17  
 Cat5\_N2O PRIMAPHIST17  
 Cat0\_HFCs PRIMAPHIST17  
 Cat0\_PFCs PRIMAPHIST17  
 Cat0\_SF6 PRIMAPHIST17  
 Population UN 2015 Population Projections MEDIUM  
 GDP IMF WEO 2015, PPP adjusted GDP, constant 2009 prices...  
 IPCC WG3 Scenario IMAGE | AMPERE2-550-FullTech-HST  
 PRIMAPHIST16 description: www.pik-potsdam.de/primap-live/primap-hist/  
 Gratefully acknowledged in particular: PRIMAP, CAIT, CDIAC, EDGAR, IPCC, IEA, UNEP Gap Team, AMPERE Team and comments on earlier versions, in particular by Giacomo Grassi. Errors and misjudgements are our own. Malte Meinshausen & Ryan Alexander; The "Fiji COP23" Edition was enabled through support via the BMUB project UM14 41 4060  
 This Factsheet is available at www.climatecollege.unimelb.edu.au/indc-factsheets. Check out as well: www.climateactiontracker.org, www.mitigation-contributions.org, cait.wri.org, infographics.pbl.nl/indc, live.primap.org, www.unep.org/climatechange/pledgepipeline, and our twitter feed @ClimateCollege  
 Cat5A1\_CO2 UNFCCC CRF + Nat. Comms.  
 Cat5A2\_CO2 UNFCCC CRF + Nat. Comms.  
 Cat5LtoNonFL\_CO2 UNFCCC CRF + Nat. Comms.  
 Cat5GCMCMWM\_C UNFCCC CRF  
 Cat5A1ForestFires UNFCCC Cat5 + EDGAR(IPCC Database)  
 Cat5A1HWP\_CO2 UNFCCC CRF + Nat. Comms.  
 Cat5bisA\_CO2 UNFCCC CRF + NATCOMM.  
 Cat5bisB\_CO2 UNFCCC CRF + NATCOMM.  
 Cat5bisC\_CO2 UNFCCC CRF + NATCOMM.  
 Cat5bisD\_CO2 UNFCCC CRF + NATCOMM.  
 Cat5bisE\_CO2 UNFCCC CRF + NATCOMM.  
 PRO\_WM\_Cat5\_G UNFCCC Annex I Reports  
 Metric GWP SAR  
 climatecollege.unimelb.edu.au  
 AUSTRALIAN-GERMAN CLIMATE & ENERGY COLLEGE

Meinshausen, Alexander et al., www.climatecollege.unimelb.edu.au/indc-factsheets, The University of Melbourne

## Various 'fair' contributions for a global 'least-cost' 2°C path (total incl. LULUCF):

2025 rel. 2010:		2030 rel. 2010:	
LEADER	#N/A	LEADER	#N/A
CDC	#N/A	CDC	#N/A
ECPC50	#N/A	ECPC50	#N/A
ECPC90	#N/A	ECPC90	#N/A
GDR	#N/A	GDR	#N/A
INDC HIGH	-355%	INDC HIGH	-372%
INDC LOW	-230%	INDC LOW	-230%

## More info on www.mitigation-contributions.org

### "Fair" contributions for a global 'least-cost' 2°C track:

- LEADER Leader
- CDC Common-but-diff. per-cap. convergence
- ECPC50 Eq. cum. Per-capita since 1950
- ECPC90 Eq. cum. Per-capita since 1990
- GDR Greenhouse Development Rights
- #N/A No available data