

# Dominica

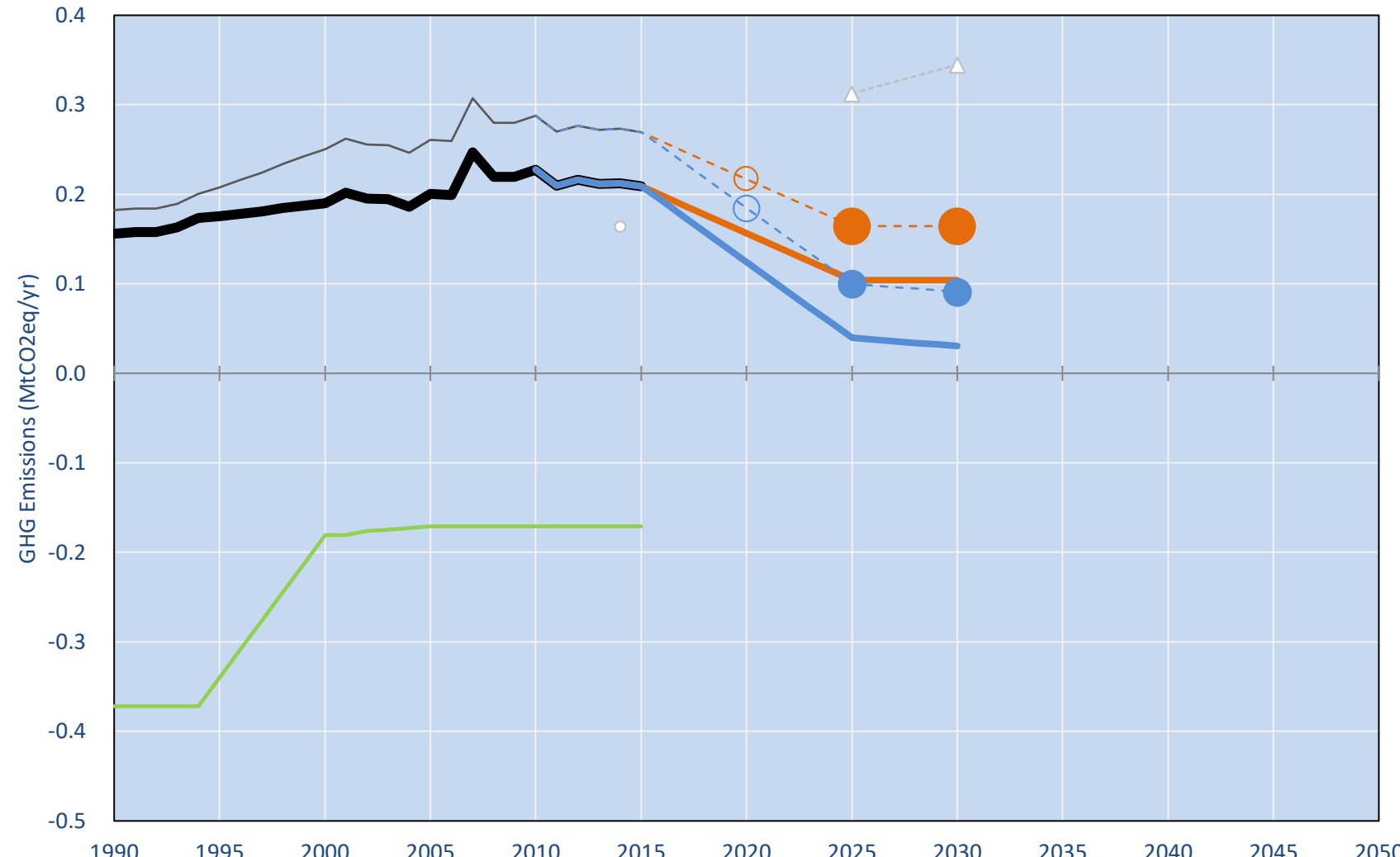
Per-Capita Emissions in 2030 rel. 2015 (excl. LULUCF): **-69%**

NDC 2025	NDC 2030	2015 World Rank	2025 World Rank	2030 World Rank
0% rel.2014	0% rel.2014	0.0% #187	0.0% #195	0.0% #196
-39% rel.2014	-45% rel.2014	2.9t #129	1t #186	0.9t #187

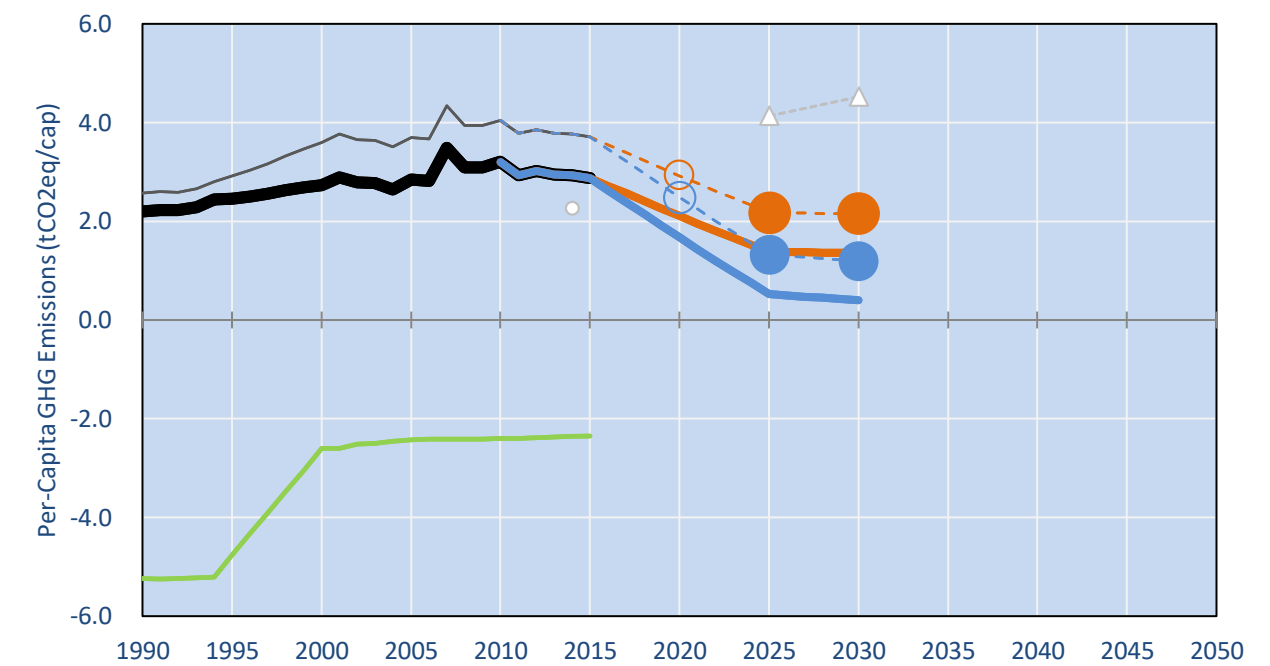
NDC: Commits to progressively reduce total gross greenhouse gas emissions below 2014 levels of 17.9% by 2020, 39.2% by 2025 and 44.7% by 2030. (GWP SAR)

INDC Submitted: 29/09/2015

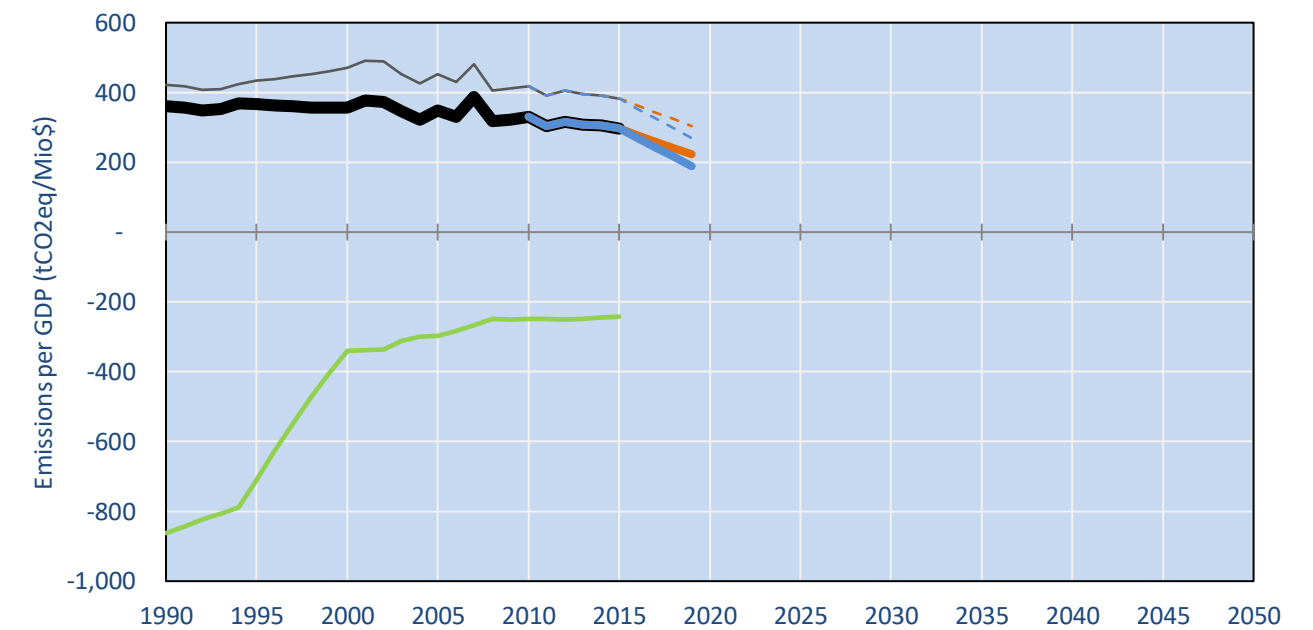
## GHG Emissions



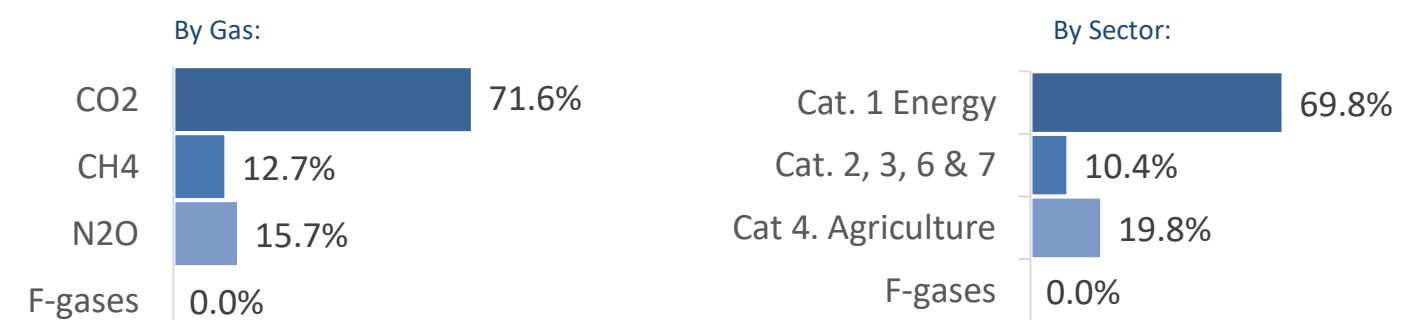
## Per-Capita Emissions



## GHG Emissions per GDP



## 2015 Total GHG Emissions excl. LULUCF



## GHG Emissions

	1990	2000	2005	2010	2015	2020	2025	2030	
(MtCO2eq/yr in GWP AR4)						low	high	low	high
Assumed LULUCF Accounting Credits (-)/Debits (+)									
NDC covered LULUCF Emissions	0	0	0	0	0	0	0	0	0
NDC covered Emissions excl. LULUCF	0	0	0	0	0	0	0	0	0
Total GHG excl. LULUCF	0	0	0	0	0	0	0	0	0
Total GHG incl. LULUCF	0	0	0	0	0	0	0	0	0

## Relative GHG Emissions

	1990	2000	2005	2010	2015	2020	2025	2030	
Total excl. LULUCF						low	high	low	high
Relative 1990	100%	122%	128%	146%	134%	100%	80%	67%	25%
Relative 2000	82%	100%	106%	120%	110%	82%	66%	55%	21%
Relative 2005	78%	95%	100%	114%	104%	78%	62%	52%	20%
Relative 2010	69%	83%	88%	100%	92%	69%	55%	46%	17%
Relative 2015	75%	91%	96%	109%	100%	75%	59%	50%	19%

## Per-Capita Emissions

	1990	2000	2005	2010	2015	2020	2025	2030	
Total excl. LULUCF						low	high	low	high
Population (Mio)	0	0	0	0	0	0	0	0	0
Per-Capita Emissions (tCO2eq/cap)	2.2	2.7	2.8	3.2	2.9	2.1	1.7	1.4	0.5
Relative 1990	100%	124%	129%	145%	131%	96%	76%	63%	24%
Relative 2000	81%	100%	104%	117%	106%	77%	61%	50%	19%
Relative 2005	77%	96%	100%	113%	101%	74%	59%	48%	18%
Relative 2010	69%	85%	89%	100%	90%	66%	52%	43%	16%
Relative 2015	76%	95%	99%	111%	100%	73%	58%	48%	18%

## Data Sources:

Cat1\_CO2 PRIMAPHIST17  
Cat2367\_CO2 PRIMAPHIST17  
Cat4\_CO2 PRIMAPHIST17  
Cat5\_CO2 PRIMAPHIST17  
Cat1\_CH4 PRIMAPHIST17  
Cat2367\_CH4 PRIMAPHIST17  
Cat4\_CH4 PRIMAPHIST17  
Cat5\_CH4 PRIMAPHIST17  
Cat1\_N2O PRIMAPHIST17  
Cat2367\_N2O PRIMAPHIST17  
Cat4\_N2O PRIMAPHIST17  
Cat5\_N2O PRIMAPHIST17  
Cat0\_HFCs PRIMAPHIST17  
Cat0\_PFCs PRIMAPHIST17  
Cat0\_SF6 PRIMAPHIST17  
Population UN 2015 Population Projections MEDIUM  
GDP IMF WEO 2015, PPP adjusted GDP, constant 2009 prices...  
IPCC WG3 Scenario IMAGE | AMPERE2-550-FullTech-HST  
PRIMAPHIST16 description: www.pik-potsdam.de/primap-live/primap-hist/  
Gratefully acknowledged in particular: PRIMAP, CAIT, CDIAC, EDGAR, IPCC, IEA, UNEP Gap Team, AMPERE Team and comments on earlier versions, in particular by Giacomo Grassi. Errors and misjudgements are our own. Malte Meinshausen & Ryan Alexander; The "Fiji COP23" Edition was enabled through support via the BMUB project UM14 41 4060  
This Factsheet is available at www.climatecollege.unimelb.edu.au/indc-factsheets. Check out as well: www.climateactiontracker.org, www.mitigation-contributions.org, cait.wri.org, infographics.pbl.nl/indc, live.primap.org, www.unep.org/climatechange/pledgepipeline, and our twitter feed @ClimateCollege  
climatecollege.unimelb.edu.au  
AUSTRALIAN-GERMAN CLIMATE & ENERGY COLLEGE

Meinshausen, Alexander et al., www.climatecollege.unimelb.edu.au/indc-factsheets, The University of Melbourne

## Various 'fair' contributions for a global 'least-cost' 2°C path (total incl. LULUCF):

More info on [www.mitigation-contributions.org](http://www.mitigation-contributions.org)

2025 rel. 2010:	2030 rel. 2010:	2025 rel. 2010:	2030 rel. 2010:
LEADER	#N/A	LEADER	#N/A
CDC	#N/A	CDC	#N/A
ECPC50	#N/A	ECPC50	#N/A
ECPC90	#N/A	ECPC90	#N/A
GDR	#N/A	GDR	#N/A
INDC HIGH	-331%	INDC HIGH	-347%
INDC LOW	-218%	INDC LOW	-218%

"Fair" contributions for a global 'least-cost' 2°C track:  
LEADER Leader  
CDC Common-but-diff. per-cap. convergence  
ECPC50 Eq. cum. Per-capita since 1950  
ECPC90 Eq. cum. Per-capita since 1990  
GDR Greenhouse Development Rights  
#N/A No available data