

# Canada

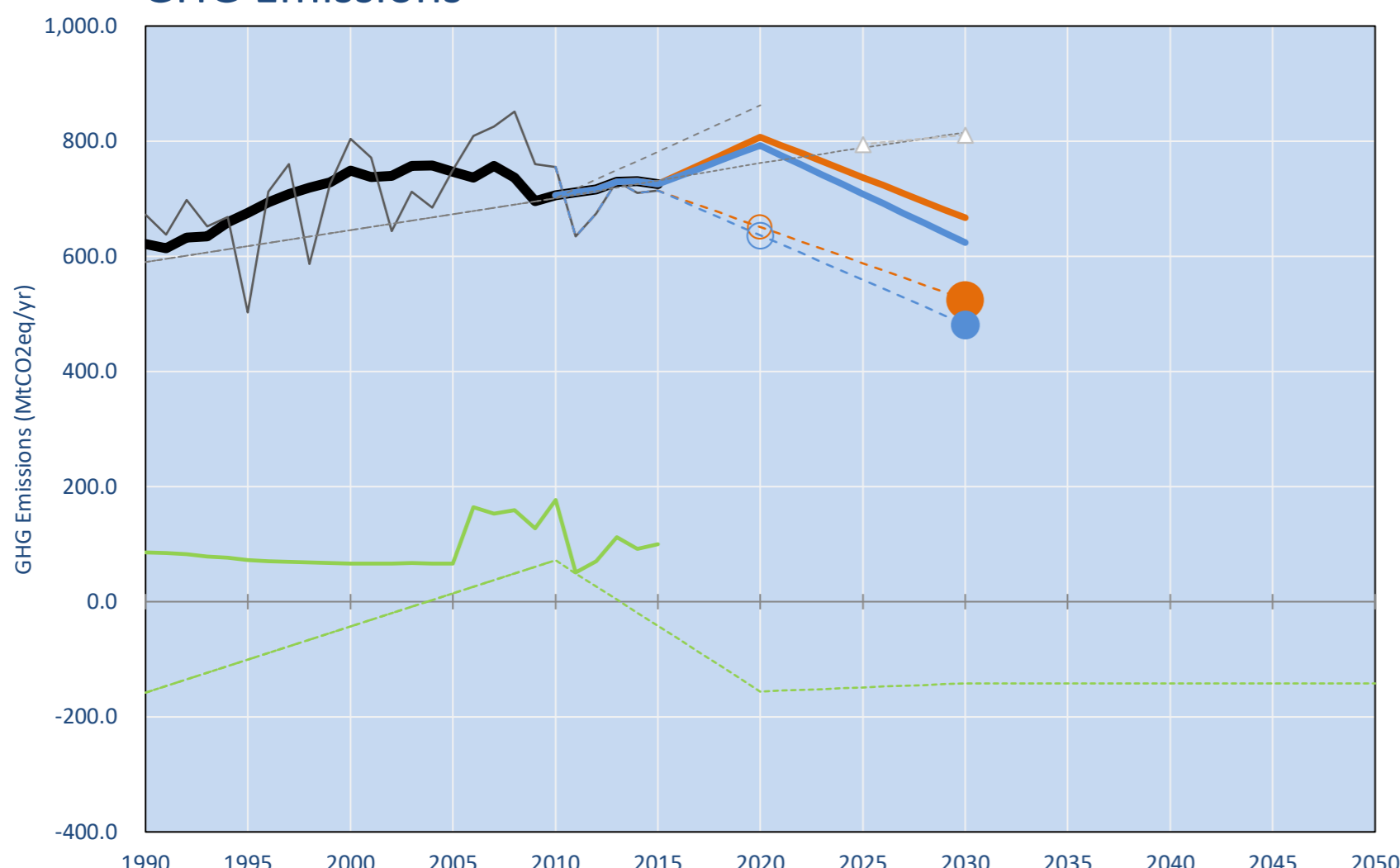
Per-Capita Emissions in 2030 rel. 2015 (excl. LULUCF): **-21%**

NDC 2025	NDC 2030	2015 World Rank	2025 World Rank	2030 World Rank
	-30% -30% rel.2005	1.5% #11	1.3% #13	1.2% #14
Share of World Emissions excl. LULUCF (Rank):		20.2t #9	18.5t #11	16t #14
Per-Capita Emissions (tCO2eq/cap)				

NDC: Canada intends to achieve an economy-wide target to reduce its greenhouse gas emissions by 30% below 2005 levels by 2030. (GWP AR4)

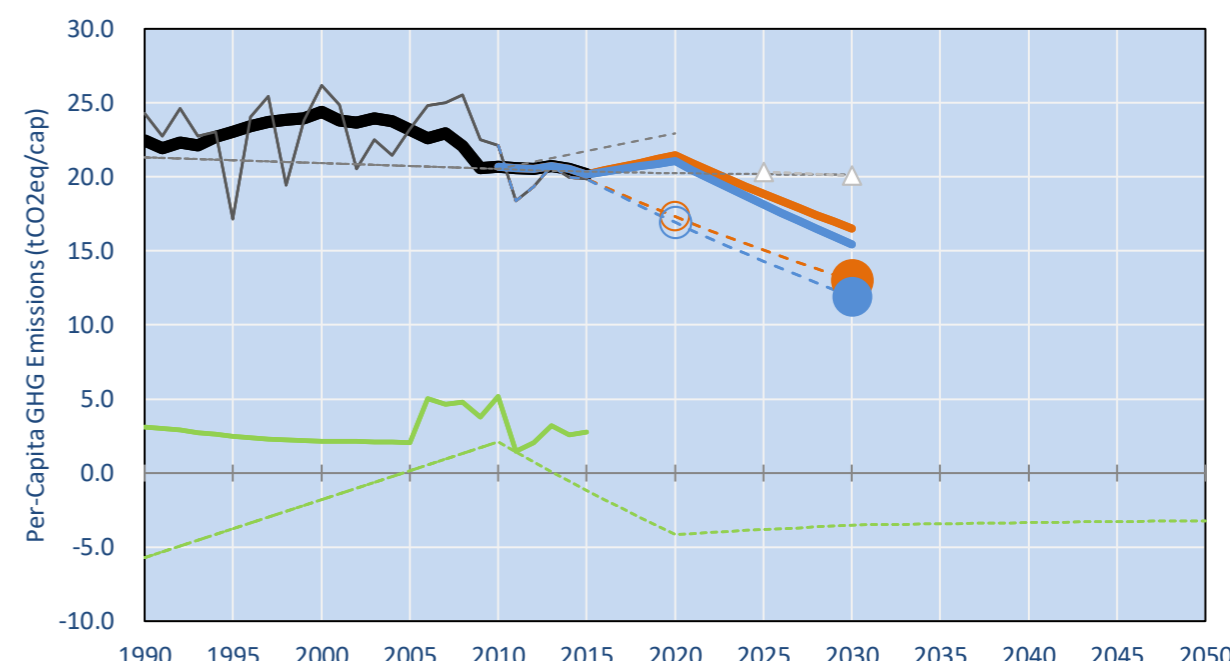
INDC Submitted: 15/05/2015

## GHG Emissions

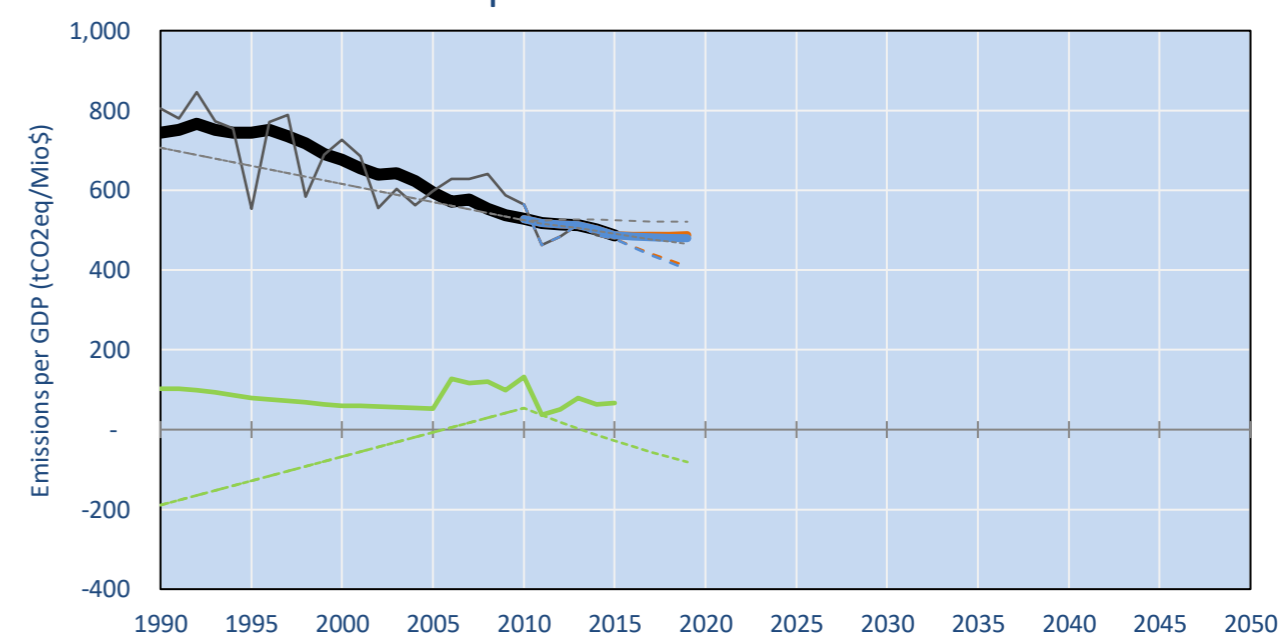


- Reference Total GHG excl. LULUCF
- Historical Covered Emissions, incl. LULUCF, if covered.
- LOW INDC Covered Emissions, incl. LULUCF if covered
- LOW INDC Covered + Non-Covered Emissions, excl. LULUCF
- HIGH INDC Covered Emissions, incl. LULUCF
- HIGH INDC Covered + Non-Covered Emissions, excl. LULUCF
- HIGH Cancun Pledges
- WM Total excl. LULUCF Projections
- NM Total excl. LULUCF Projections
- Reference LULUCF Emissions
- LOW INDC Levels
- LOW INDC Covered Emissions, excl. LULUCF
- HIGH INDC Levels
- HIGH INDC Covered Emissions, excl. LULUCF
- LOW Cancun Pledges
- WM LULUCF Projections
- Regional/Gas-specific BAU
- Not-covered GHG excl. LULUCF (Region Projection)

## Per-Capita Emissions



## GHG Emissions per GDP



## 2015 Total GHG Emissions excl. LULUCF

By Gas:	By Sector:
CO2: 78.6%	Cat. 1 Energy: 82.6%
CH4: 14.1%	Cat. 2, 3, 6 & 7: 7.5%
N2O: 5.6%	Cat 4. Agriculture: 8.1%
F-gases: 1.7%	F-gases: 1.7%

## GHG Emissions

(MtCO2eq/yr in GWP AR4)	1990	2000	2005	2010	2015	2020	2025	2030
Assumed LULUCF Accounting Credits (-)/Debits (+)						low high	low high	low high
NDC covered LULUCF Emissions	621	749	747	706	725	156 156	149 149	142 142
NDC covered Emissions excl. LULUCF	621	749	747	706	725	807 793	737 708	667 624
Total GHG excl. LULUCF	621	749	747	706	725	807 793	737 708	667 624
Total GHG incl. LULUCF	706	816	813	882	825	651 637	588 559	525 482

## Relative GHG Emissions

Total excl. LULUCF	1990	2000	2005	2010	2015	2020	2025	2030
Relative 1990	100%	121%	120%	114%	117%	130%	119%	107%
Relative 2000	83%	100%	100%	94%	97%	108%	98%	89%
Relative 2005	83%	100%	100%	94%	97%	108%	99%	89%
Relative 2010	88%	106%	106%	100%	103%	114%	104%	95%
Relative 2015	86%	103%	103%	97%	100%	111%	102%	92%

## Per-Capita Emissions

Total excl. LULUCF	1990	2000	2005	2010	2015	2020	2025	2030
Population (Mio)	28	31	32	34	36	low high	low high	low high
Per-Capita Emissions (tCO2eq/cap)	22.5	24.4	23.2	20.7	20.2	21.5 21.1	18.9 18.1	16.5 15.4
Relative 1990	100%	109%	103%	92%	90%	96%	84%	74%
Relative 2000	92%	100%	95%	85%	83%	88%	77%	68%
Relative 2005	97%	105%	100%	89%	87%	93%	81%	71%
Relative 2010	109%	118%	112%	100%	98%	104%	91%	80%
Relative 2015	111%	121%	115%	102%	100%	106%	93%	82%

## Data Sources:

Cat1_CO2	PRIMAPHIST17	Cat5A1_CO2	UNFCCC CRF + Nat. Comms.
Cat2367_CO2	PRIMAPHIST17	Cat5A2_CO2	UNFCCC CRF + Nat. Comms.
Cat4_CO2	PRIMAPHIST17	Cat5LtoNonFL_CO2	UNFCCC CRF + Nat. Comms.
Cat5_CO2	PRIMAPHIST17	Cat5GMCMWMM_C	UNFCCC CRF + Nat. Comms.
Cat1_CH4	PRIMAPHIST17	Cat5A1ForestFires	UNFCCC Cat5 + EDGAR(IPCC Database)
Cat2367_CH4	PRIMAPHIST17	Cat5A1HWP_CO2	UNFCCC CRF + Nat. Comms.
Cat4_CH4	PRIMAPHIST17	Cat5bisA_CO2	UNFCCC CRF + NATCOMM.
Cat5_CH4	PRIMAPHIST17	Cat5bisB_CO2	UNFCCC CRF + NATCOMM.
Cat1_N2O	PRIMAPHIST17	Cat5bisC_CO2	UNFCCC CRF + NATCOMM.
Cat2367_N2O	PRIMAPHIST17	Cat5bisD_CO2	UNFCCC CRF + NATCOMM.
Cat4_N2O	PRIMAPHIST17	Cat5bisE_CO2	UNFCCC CRF + NATCOMM.
Cat5_N2O	PRIMAPHIST17	PRO_WM_Cat5_G	UNFCCC Annex I Reports
Cat0_HFCs	PRIMAPHIST17	Metric	GWP AR4
Cat0_PFCs	PRIMAPHIST17		
Cat0_SF6	PRIMAPHIST17		
Population	UN 2015 Population Projections MEDIUM		
GDP	IMF WEO 2015, PPP adjusted GDP, constant 2009 prices...		
	IPCC WG3 Scenario IMAGE   AMPERE2-550-FullTech-HST		
	PRIMAPHIST16 description: www.pik-potsdam.de/primap-live/primap-hist/		
	Gratefully acknowledged in particular: PRIMAP, CAIT, CDIAC, EDGAR, IPCC, IEA, UNEP Gap Team, AMPERE Team and comments on earlier versions, in particular by Giacomo Grassi. Errors and misjudgements are our own. Malte Meinshausen & Ryan Alexander; The "Fiji COP23" Edition was enabled through support via the BMUB project UM14 41 4060		
	This Factsheet is available at www.climatecollege.unimelb.edu.au/indc-factsheets. Check out as well: www.climateactiontracker.org, www.mitigation-contributions.org, cait.wri.org, infographics.pbl.nl/indc, live.primap.org, www.unep.org/climatechange/pledgepipeline, and our twitter feed @ClimateCollege		
		climatecollege.unimelb.edu.au	
		AUSTRALIAN-GERMAN CLIMATE & ENERGY COLLEGE	

## Various 'fair' contributions for a global 'least-cost' 2°C path (total incl. LULUCF):

2025 rel. 2010:	2030 rel. 2010:
LEADER: -50%	LEADER: -72%
CDC: -29%	CDC: -41%
ECPC50: -48%	ECPC50: -70%
ECPC90: -39%	ECPC90: -57%
GDR: -56%	GDR: -71%
INDC HIGH: -37%	INDC HIGH: -45%
INDC LOW: -33%	INDC LOW: -40%

## More info on www.mitigation-contributions.org

### "Fair" contributions for a global 'least-cost' 2°C track:

LEADER	Leader
CDC	Common-but-diff. per-cap. convergence
ECPC50	Eq. cum. Per-capita since 1950
ECPC90	Eq. cum. Per-capita since 1990
GDR	Greenhouse Development Rights
#N/A	No available data