

Shown: 2025 & 2030: Min/max of unconditional and conditional targets

Paris Agreement ratified on: 21/09/2016

Brazil

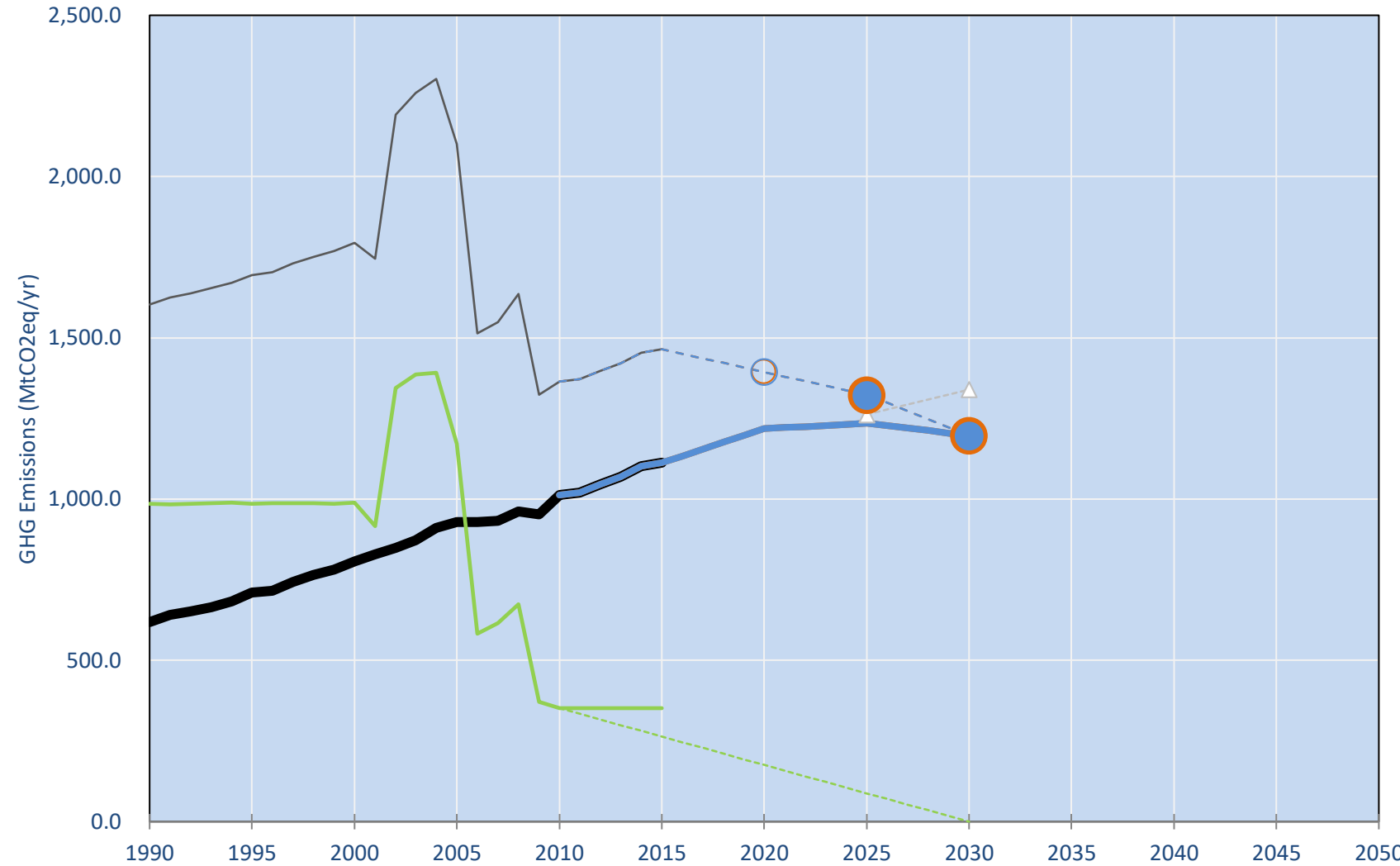
Per-Capita Emissions in 2030 rel. 2015 (excl. LULUCF): **-2%**

NDC 2025	NDC 2030	2015 World Rank	2025 World Rank	2030 World Rank
-37% rel.2005	-43% rel.2005	2.3% #7	2.3% #6	2.2% #6
Share of World Emissions excl. LULUCF (Rank):		5.4t #89	5.5t #84	5.2t #87
Per-Capita Emissions (tCO2eq/cap)				

NDC: Committed to reduce GHG emissions by 36% below 2005 levels in 2025 Indicative target for 2030 43% reduction below 2005 levels. (GWP AR5)

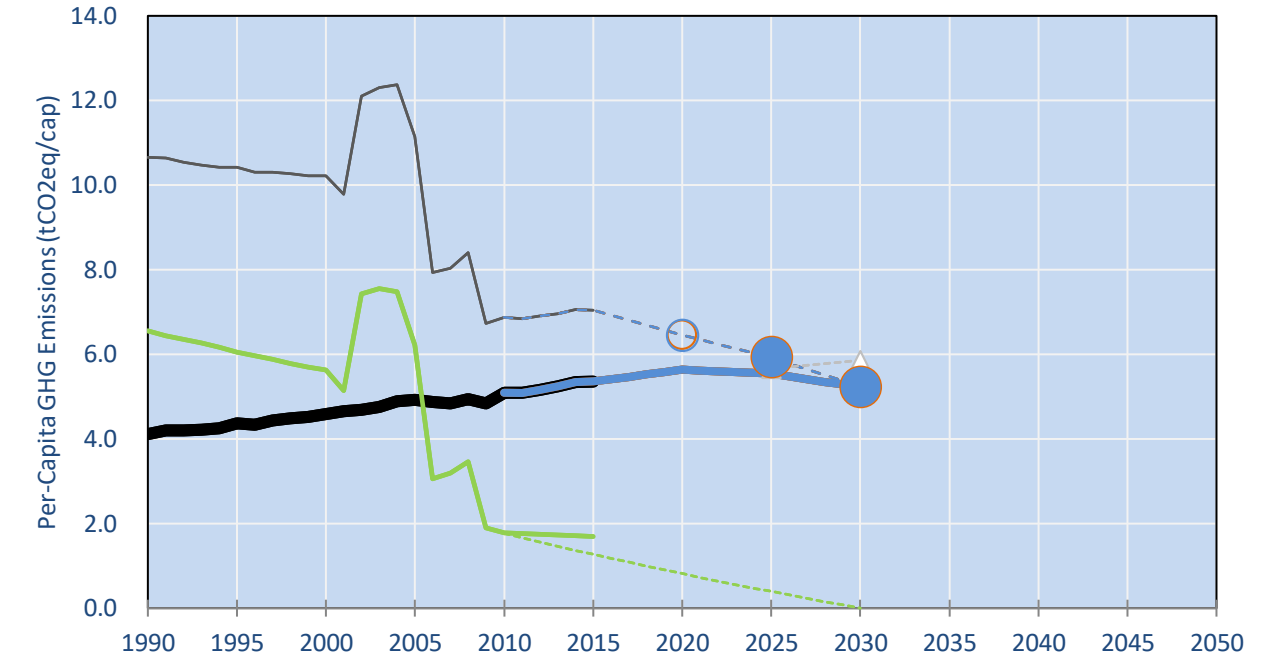
INDC Submitted: 28/09/2015

GHG Emissions

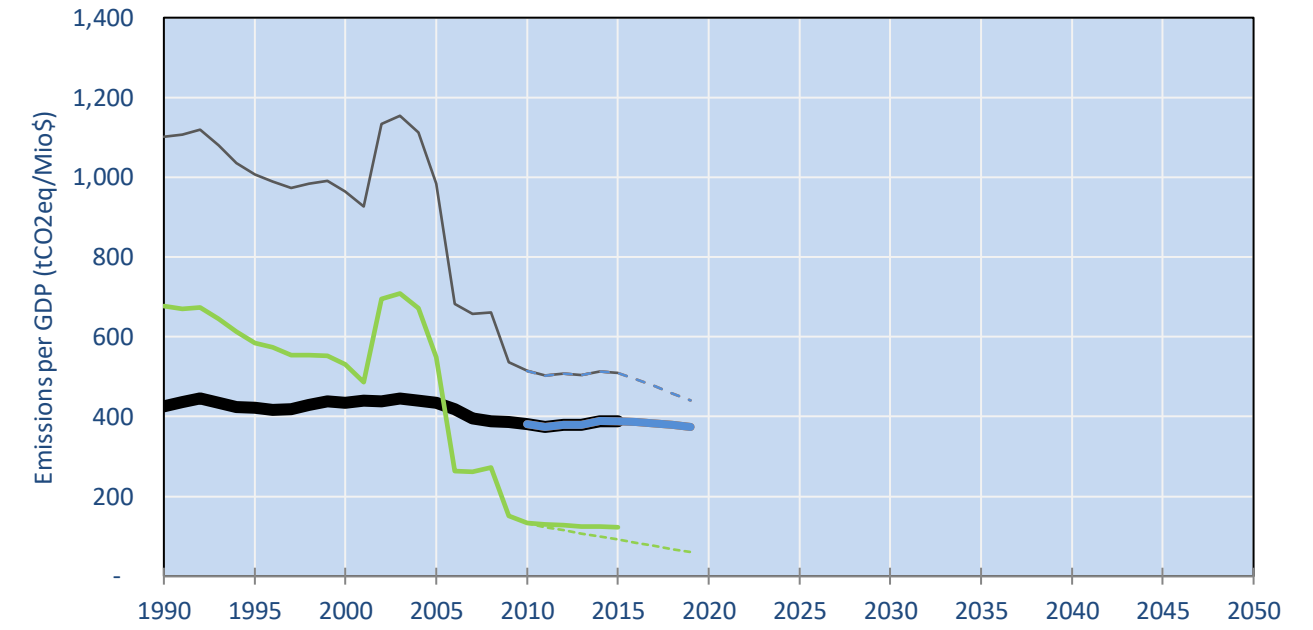


- Reference Total GHG excl. LULUCF
- Historical Covered Emissions, incl. LULUCF, if covered.
- LOW INDC Covered Emissions, incl. LULUCF if covered
- LOW INDC Covered + Non-Covered Emissions, excl. LULUCF
- HIGH INDC Covered Emissions, incl. LULUCF
- HIGH INDC Covered + Non-Covered Emissions, excl. LULUCF
- HIGH Cancun Pledges
- Reference LULUCF Emissions
- LOW INDC Levels
- LOW INDC Covered Emissions, excl. LULUCF
- HIGH INDC Levels
- HIGH INDC Covered Emissions, excl. LULUCF
- LOW Cancun Pledges
- WM LULUCF Projections
- Regional/Gas-specific BAU
- Not-covered GHG excl. LULUCF (Region Projection)

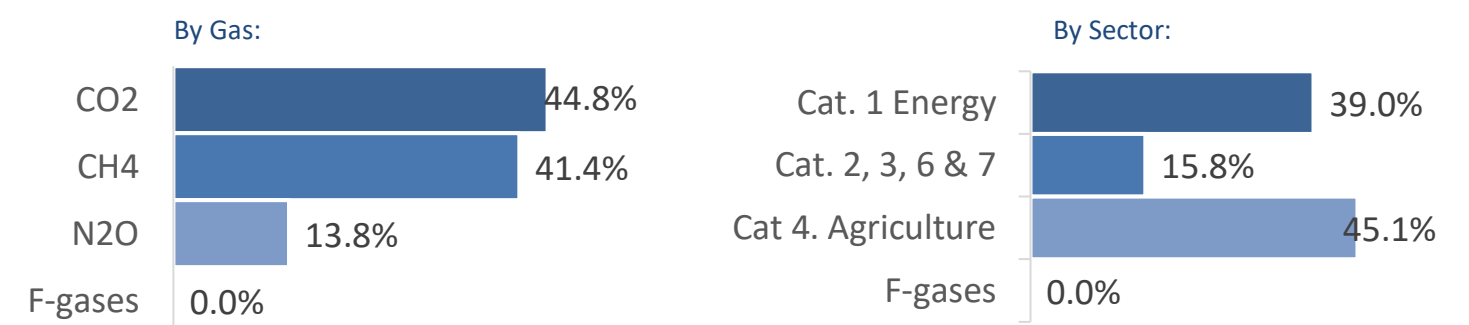
Per-Capita Emissions



GHG Emissions per GDP



2015 Total GHG Emissions excl. LULUCF



GHG Emissions

	1990	2000	2005	2010	2015	2020	2025	2030	
(MtCO2eq/yr in GWP AR5)						low	high	low	high
Assumed LULUCF Accounting Credits (-)/Debits (+)									
NDC covered LULUCF Emissions	985	988	1,171	352	352	176	176	88	88
NDC covered Emissions excl. LULUCF	619	807	929	1,013	1,113	1,218	1,218	1,235	1,197
Total GHG excl. LULUCF	619	807	929	1,013	1,113	1,218	1,218	1,235	1,197
Total GHG incl. LULUCF	1,603	1,795	2,100	1,365	1,465	1,394	1,394	1,323	1,323

Relative GHG Emissions

	1990	2000	2005	2010	2015	2020	2025	2030	
Total excl. LULUCF						low	high	low	high
Relative 1990	100%	130%	150%	164%	180%	197%	197%	200%	194%
Relative 2000	77%	100%	115%	125%	138%	151%	151%	153%	148%
Relative 2005	67%	87%	100%	109%	120%	131%	131%	133%	129%
Relative 2010	61%	80%	92%	100%	110%	120%	122%	122%	118%
Relative 2015	56%	73%	83%	91%	100%	109%	109%	111%	108%

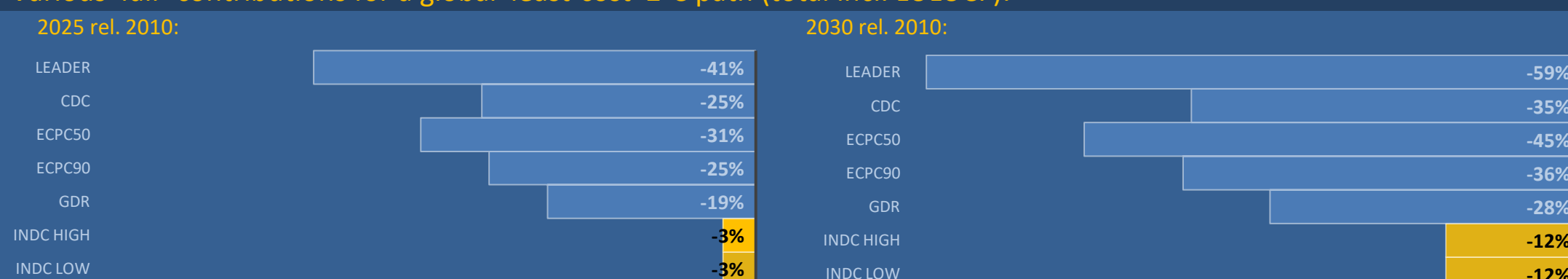
Per-Capita Emissions

	1990	2000	2005	2010	2015	2020	2025	2030	
Total excl. LULUCF						low	high	low	high
Population (Mio)	150	176	188	199	208	216	216	223	229
Per-Capita Emissions (tCO2eq/cap)	4.1	4.6	4.9	5.1	5.4	5.6	5.6	5.5	5.2
Relative 1990	100%	112%	120%	124%	130%	137%	137%	135%	127%
Relative 2000	90%	100%	107%	111%	117%	123%	123%	121%	114%
Relative 2005	83%	93%	100%	103%	109%	114%	114%	112%	106%
Relative 2010	81%	90%	97%	100%	105%	111%	111%	109%	103%
Relative 2015	77%	86%	92%	95%	100%	105%	105%	103%	98%

Data Sources:

Cat1_CO2 PRIMAPHIST17
Cat2367_CO2 PRIMAPHIST17
Cat4_CO2 PRIMAPHIST17
Cat5_CO2 PRIMAPHIST17
Cat1_CH4 PRIMAPHIST17
Cat2367_CH4 PRIMAPHIST17
Cat4_CH4 PRIMAPHIST17
Cat5_CH4 PRIMAPHIST17
Cat1_N2O PRIMAPHIST17
Cat2367_N2O PRIMAPHIST17
Cat4_N2O PRIMAPHIST17
Cat5_N2O PRIMAPHIST17
Cat0_HFCs PRIMAPHIST17
Cat0_PFCs PRIMAPHIST17
Cat0_SF6 PRIMAPHIST17
Population UN 2015 Population Projections MEDIUM
GDP IMF WEO 2015, PPP adjusted GDP, constant 2009 prices...
IPCC WG3 Scenario IMAGE | AMPERE2-550-FullTech-HST
PRIMAPHIST16 description: www.pik-potsdam.de/primap-live/primap-hist/
Gratefully acknowledged in particular: PRIMAP, CAIT, CDIAC, EDGAR, IPCC, IEA, UNEP Gap Team, AMPERE Team and comments on earlier versions, in particular by Giacomo Grassi. Errors and misjudgements are our own. Malte Meinshausen & Ryan Alexander; The "Fiji COP23" Edition was enabled through support via the BMUB project UM14 41 4060
This Factsheet is available at www.climatecollege.unimelb.edu.au/indc-factsheets. Check out as well: www.climateactiontracker.org, www.mitigation-contributions.org, cait.wri.org, infographics.pbl.nl/indc, live.primap.org, www.unep.org/climatechange/pledgepipeline, and our twitter feed @ClimateCollege
climatecollege.unimelb.edu.au
AUSTRALIAN-GERMAN CLIMATE & ENERGY COLLEGE

Various 'fair' contributions for a global 'least-cost' 2°C path (total incl. LULUCF):



More info on www.mitigation-contributions.org

"Fair" contributions for a global 'least-cost' 2°C track:

- LEADER Leader
- CDC Common-but-diff. per-cap. convergence
- ECPC50 Eq. cum. Per-capita since 1950
- ECPC90 Eq. cum. Per-capita since 1990
- GDR Greenhouse Development Rights
- #N/A No available data