

# Bosnia and Herzegovina

Per-Capita Emissions in 2030 rel. 2015 (excl. LULUCF): **+31%**

NDC 2025

NDC 2030

2015 World Rank

2025 World Rank

2030 World Rank

Share of World Emissions excl. LULUCF (Rank):

0.1% #105

0.1% #110

0.1% #106

Per-Capita Emissions (tCO<sub>2</sub>eq/cap)

8t #52

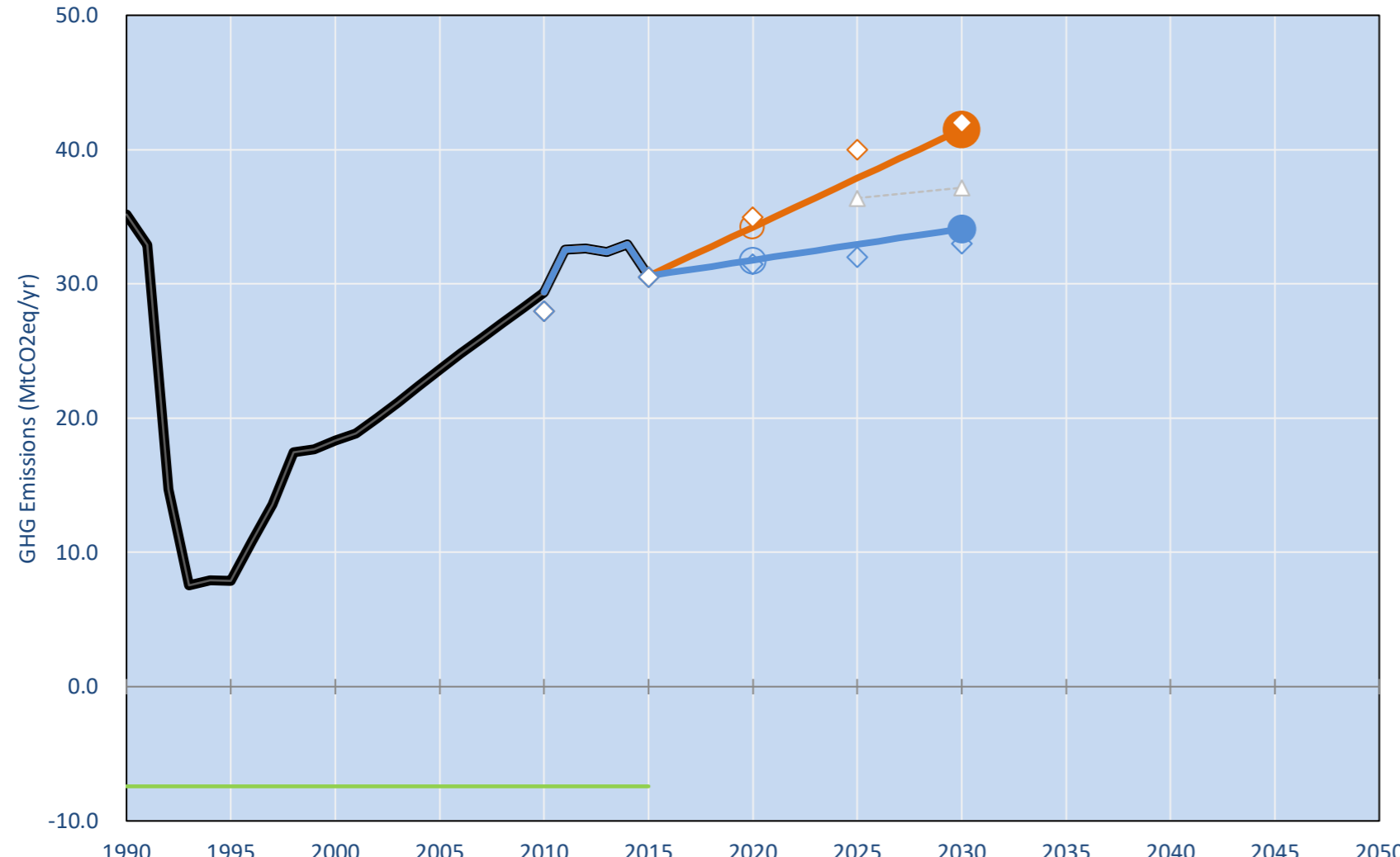
9.6t #35

10.5t #28

NDC: 18% above 1990 levels unconditional vs. 20% above 1990 BAU. Conditionally: -3% reduction by 2030 below 1990. . ()

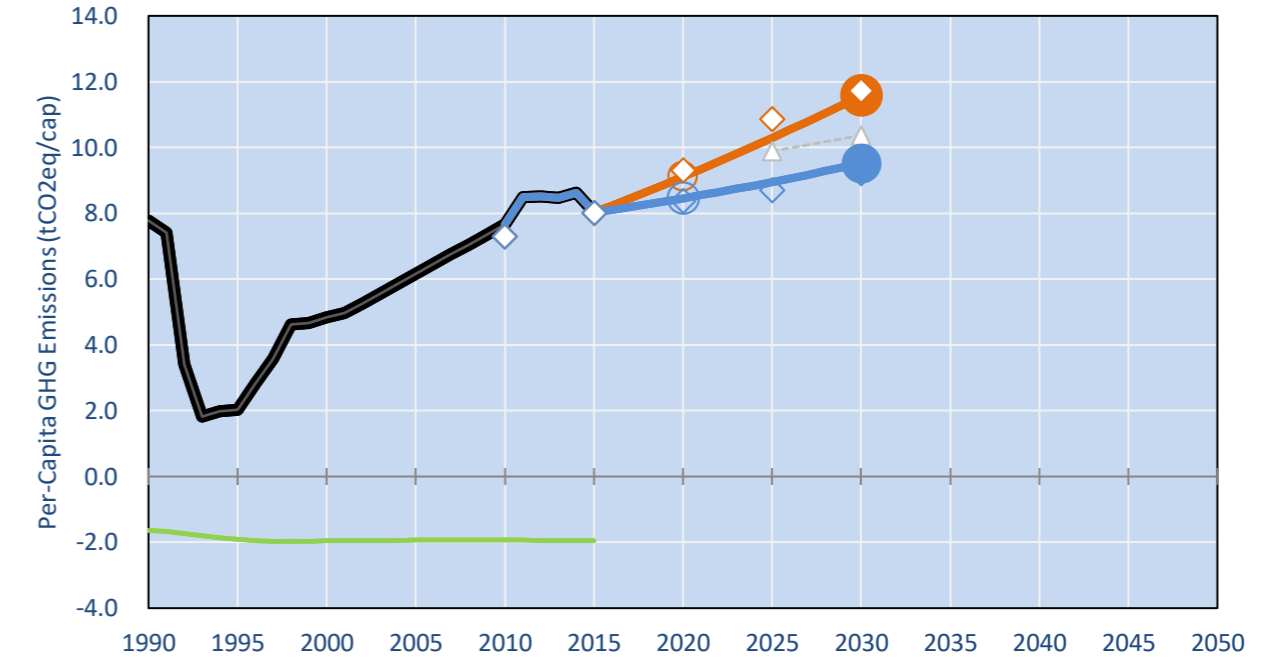
INDC Submitted: 8/10/2015

## GHG Emissions

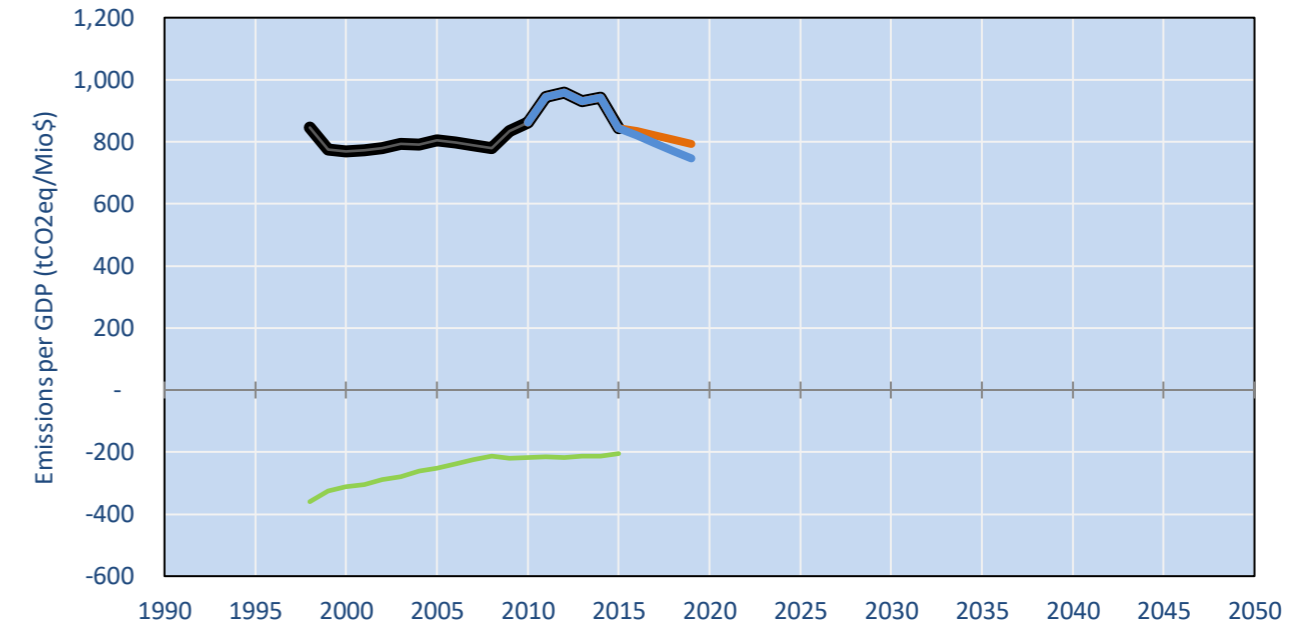


- Reference Total GHG excl. LULUCF
- Historical Covered Emissions, incl. LULUCF, if covered.
- LOW INDC Covered Emissions, incl. LULUCF if covered
- LOW INDC Covered + Non-Covered Emissions, excl. LULUCF
- HIGH INDC Covered Emissions, incl. LULUCF
- HIGH INDC Covered + Non-Covered Emissions, excl. LULUCF
- HIGH Cancun Pledges
- INDC condit. Total excl. LULUCF
- Not-covered GHG excl. LULUCF (Region Projection)
- Reference LULUCF Emissions
- LOW INDC Levels
- LOW INDC Covered Emissions, excl. LULUCF
- HIGH INDC Levels
- HIGH INDC Covered Emissions, excl. LULUCF
- LOW Cancun Pledges
- BAU in INDC graph Total excl. LULUCF
- Regional/Gas-specific BAU

## Per-Capita Emissions

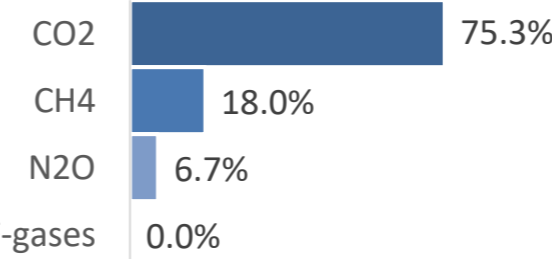


## GHG Emissions per GDP

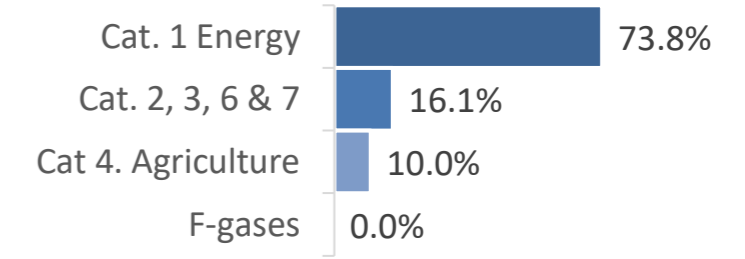


## 2015 Total GHG Emissions excl. LULUCF

By Gas:



By Sector:



## GHG Emissions

	1990	2000	2005	2010	2015	2020		2025		2030	
(MtCO <sub>2</sub> eq/yr in GWP AR5)						low	high	low	high	low	high
Assumed LULUCF Accounting Credits (-)/Debits (+)	-	-	-	-	-	-	-	-	-	-	-
NDC covered LULUCF Emissions	-	-	-	-	-	-	-	-	-	-	-
NDC covered Emissions excl. LULUCF	35	18	24	29	31	34	32	38	33	41	34
Total GHG excl. LULUCF	35	18	24	29	31	34	32	38	33	41	34
Total GHG incl. LULUCF	28	11	16	22	23	27	24	30	26	34	27

## Relative GHG Emissions

	1990	2000	2005	2010	2015	2020		2025		2030	
Total excl. LULUCF						low	high	low	high	low	high
Relative 1990	100%	52%	67%	84%	87%	97%	90%	108%	94%	118%	97%
Relative 2000	192%	100%	129%	160%	167%	187%	173%	206%	180%	226%	186%
Relative 2005	149%	78%	100%	124%	129%	145%	134%	160%	139%	176%	144%
Relative 2010	120%	62%	80%	100%	104%	117%	108%	129%	112%	141%	116%
Relative 2015	115%	60%	77%	96%	100%	112%	104%	124%	108%	136%	112%

## Per-Capita Emissions

	1990	2000	2005	2010	2015	2020		2025		2030	
Total excl. LULUCF						low	high	low	high	low	high
Population (Mio)	5	4	4	4	4	4	4	4	4	4	4
Per-Capita Emissions (tCO <sub>2</sub> eq/cap)	7.8	4.8	6.2	7.7	8.0	9.1	8.5	10.3	8.9	11.6	9.5
Relative 1990	100%	62%	79%	99%	103%	117%	109%	132%	115%	149%	123%
Relative 2000	161%	100%	127%	158%	166%	188%	175%	213%	185%	239%	197%
Relative 2005	126%	78%	100%	124%	130%	148%	137%	167%	145%	188%	154%
Relative 2010	101%	63%	80%	100%	105%	119%	110%	134%	117%	151%	124%
Relative 2015	97%	60%	77%	95%	100%	113%	105%	128%	111%	144%	119%

## Data Sources:

Cat1\_CO2 PRIMAPHIST17  
 Cat2367\_CO2 PRIMAPHIST17  
 Cat4\_CO2 PRIMAPHIST17  
 Cat5\_CO2 PRIMAPHIST17  
 Cat1\_CH4 PRIMAPHIST17  
 Cat2367\_CH4 PRIMAPHIST17  
 Cat4\_CH4 PRIMAPHIST17  
 Cat5\_CH4 PRIMAPHIST17  
 Cat1\_N2O PRIMAPHIST17  
 Cat2367\_N2O PRIMAPHIST17  
 Cat4\_N2O PRIMAPHIST17  
 Cat5\_N2O PRIMAPHIST17  
 Cat0\_HFCs PRIMAPHIST17  
 Cat0\_PFCs PRIMAPHIST17  
 Cat0\_SF6 PRIMAPHIST17  
 Population UN 2015 Population Projections MEDIUM  
 GDP IMF WEO 2015, PPP adjusted GDP, constant 2009 prices...  
 IPCC WG3 Scenario IMAGE | AMPERE2-550-FullTech-HST  
 PRIMAPHIST16 description: www.pik-potsdam.de/primap-live/primap-hist/  
 Gratefully acknowledged in particular: PRIMAP, CAIT, CDIAC, EDGAR, IPCC, IEA, UNEP GAP Team, AMPERE Team and comments on earlier versions, in particular by Giacomo Grassi. Errors and misjudgements are our own. Malte Meinshausen & Ryan Alexander; The "Fiji COP23" Edition was enabled through support via the BMUB project UM14 41 4060  
 This Factsheet is available at www.climatecollege.unimelb.edu.au/indc-factsheets. Check out as well: www.climateactiontracker.org, www.mitigation-contributions.org, cait.wri.org, infographics.pbl.nl/indc, live.primap.org, www.unep.org/climatechange/pledgepipeline, and our twitter feed @ClimateCollege  
 climatecollege.unimelb.edu.au  
 AUSTRALIAN-GERMAN CLIMATE & ENERGY COLLEGE

## Various 'fair' contributions for a global 'least-cost' 2°C path (total incl. LULUCF):

2025 rel. 2010:		2030 rel. 2010:	
LEADER	#N/A	LEADER	#N/A
CDC	-25%	CDC	-36%
ECPC50	-3%	ECPC50	-5%
ECPC90	-24%	ECPC90	-30%
GDR	-6%	GDR	-13%
INDC HIGH	16%	INDC HIGH	22%
INDC LOW	39%	INDC LOW	55%



Shown fair contributions only indicative

"Fair" contributions for a global 'least-cost' 2°C track:

- LEADER Leader
- CDC Common-but-diff. per-cap. convergence
- ECPC50 Eq. cum. Per-capita since 1950
- ECPC90 Eq. cum. Per-capita since 1990
- GDR Greenhouse Development Rights
- #N/A No available data