

Algeria

Per-Capita Emissions in 2030 rel. 2015 (excl. LULUCF): **-11%**

NDC 2025

NDC 2030

2015 World Rank

2025 World Rank

2030 World Rank

-7% rel. BAU of 274.2 Mt

Share of World Emissions excl. LULUCF (Rank):

0.5% #37

0.4% #39

0.4% #40

-22% rel. BAU of 274.2 Mt

Per-Capita Emissions (tCO2eq/cap)

5.3t #84

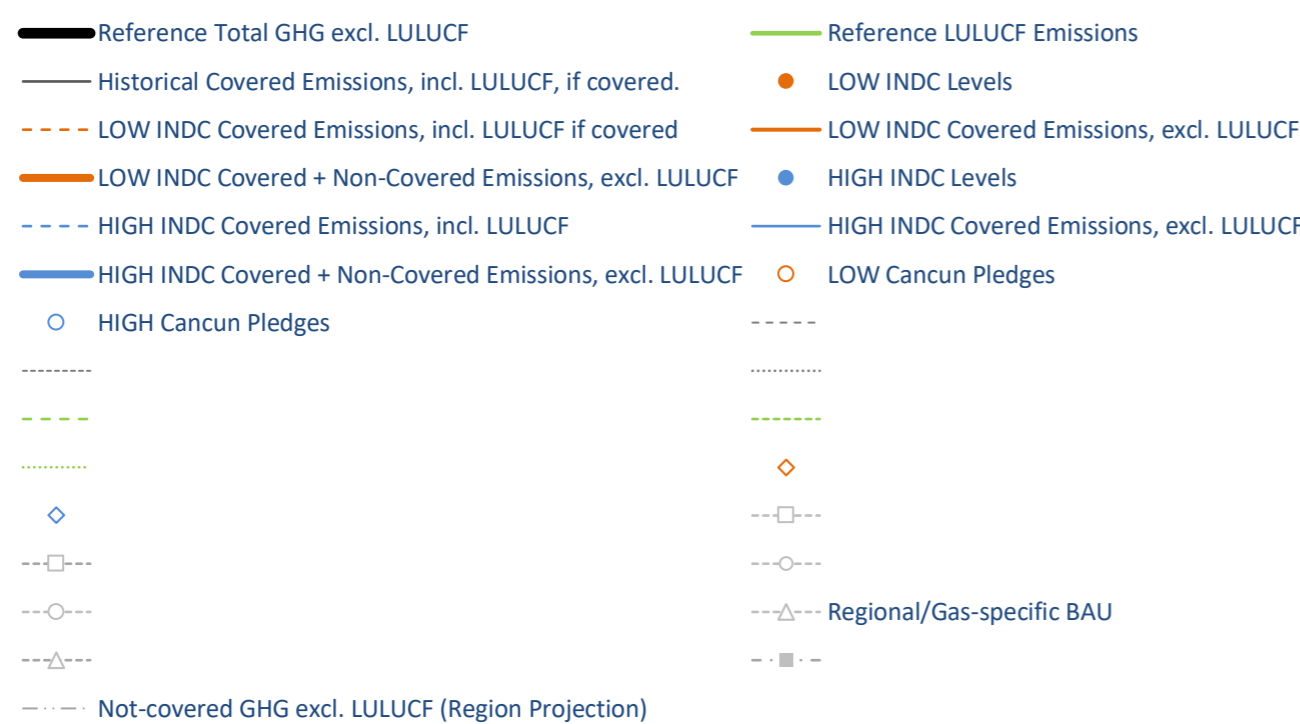
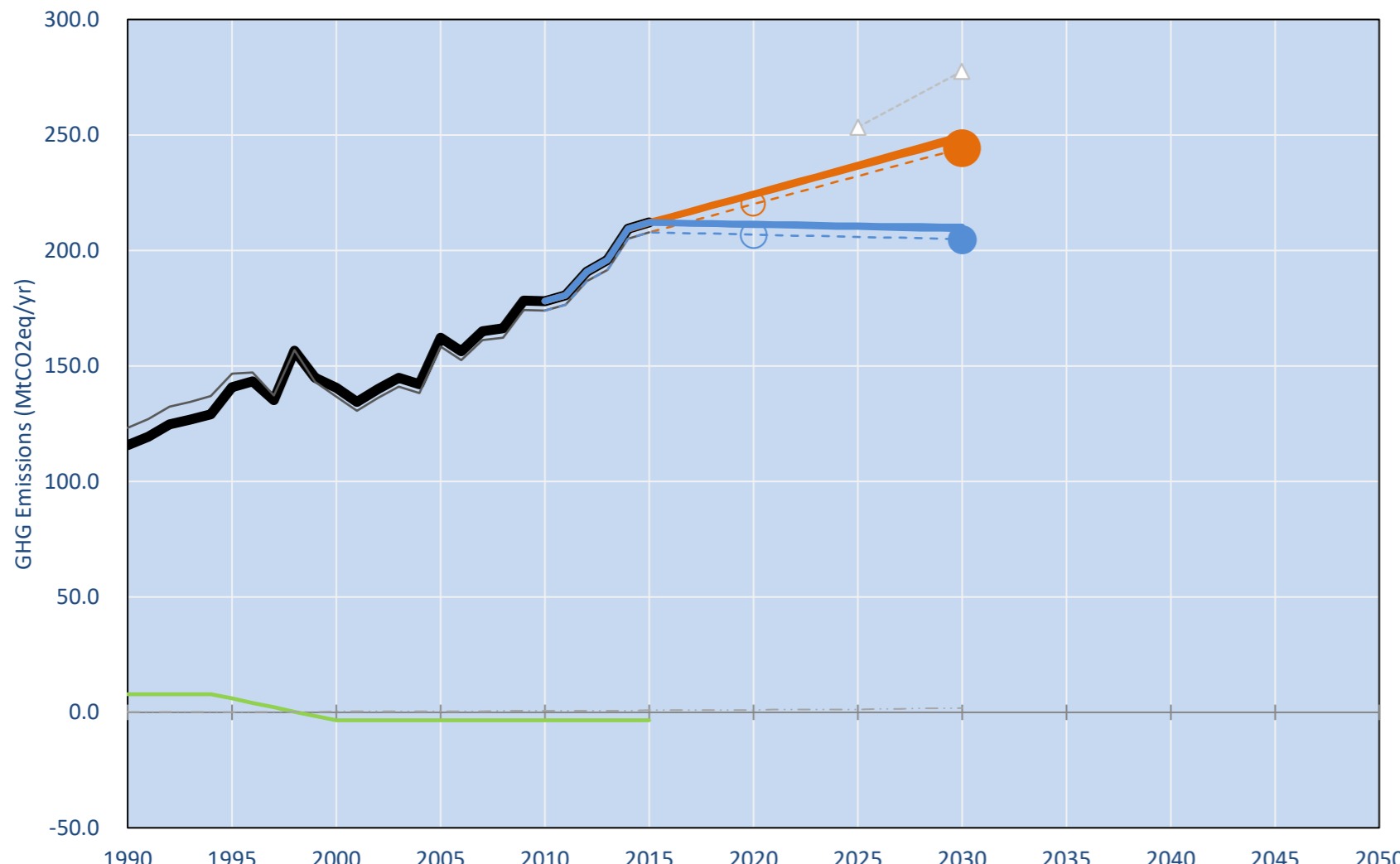
4.9t #98

4.8t #99

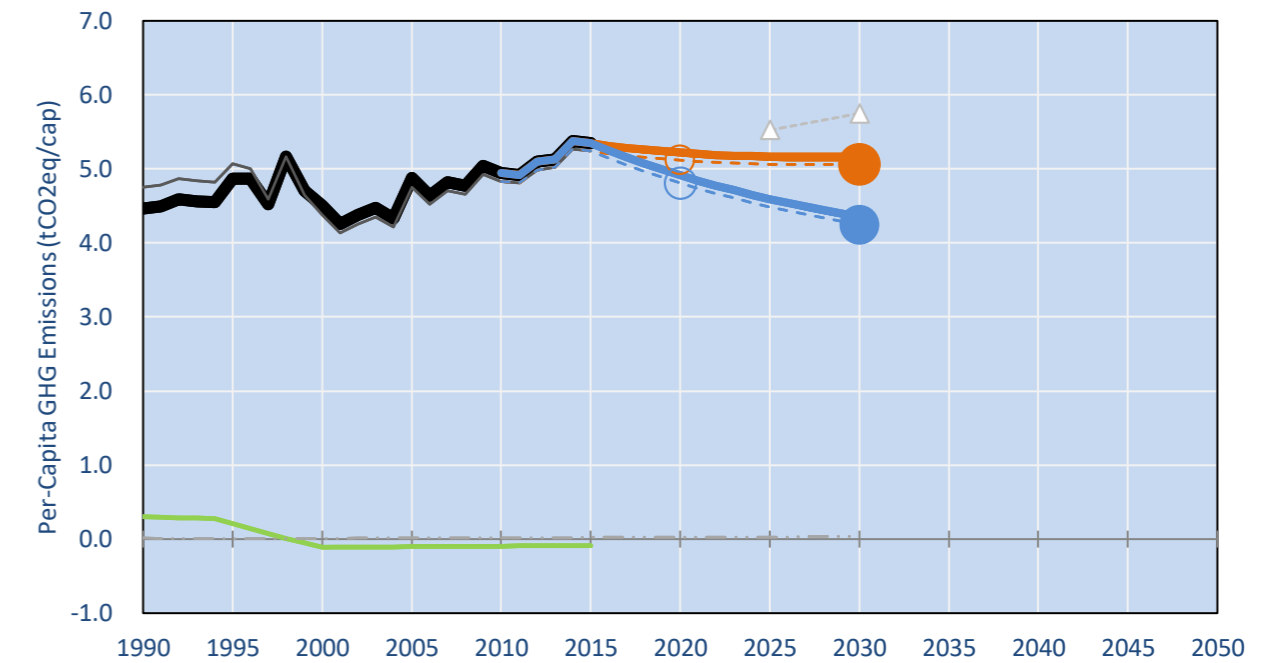
NDC: Reduction of GHG emissions by 7% by 2030 compared to BAUConditional: up to 22% subject to support for external financing, development and technology transfer and capacity building. (GWP AR4)

INDC Submitted: 4/09/2015

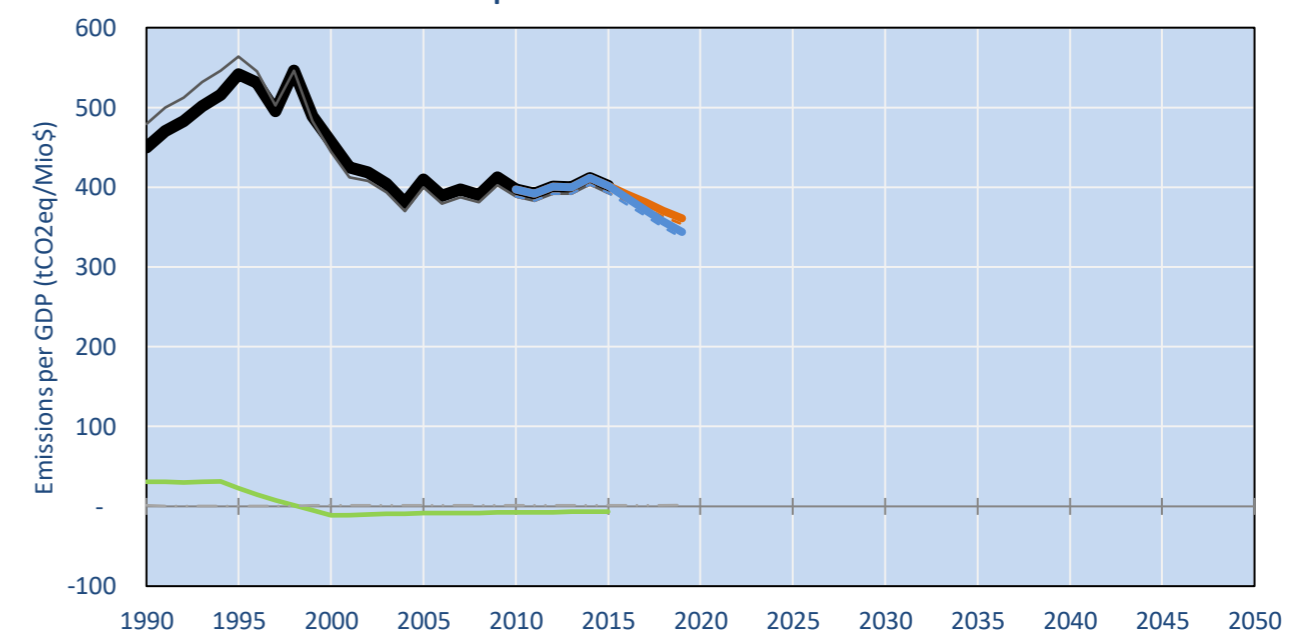
GHG Emissions



Per-Capita Emissions

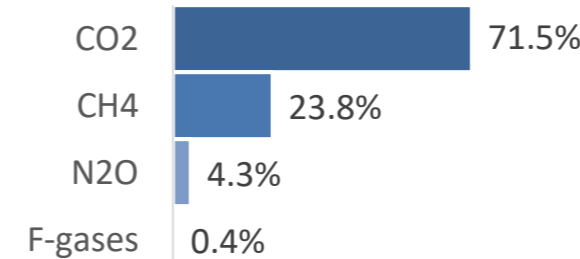


GHG Emissions per GDP

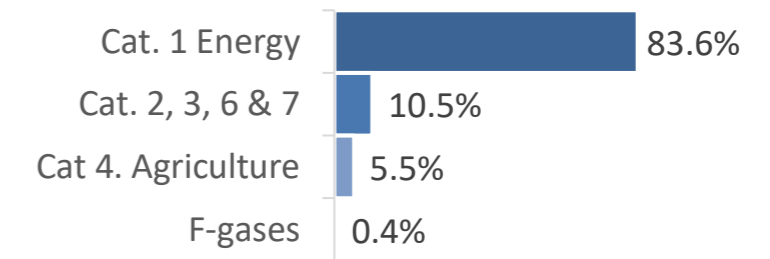


2015 Total GHG Emissions excl. LULUCF

By Gas:



By Sector:



GHG Emissions

	1990	2000	2005	2010	2015	2020		2025		2030	
						low	high	low	high	low	high
(MtCO2eq/yr in GWP SAR)											
Assumed LULUCF Accounting Credits (-)/Debits (+)											
NDC covered LULUCF Emissions	8	3	3	3	3	3	3	3	3	3	3
NDC covered Emissions excl. LULUCF	115	140	162	177	211	223	210	236	209	248	208
Total GHG excl. LULUCF	116	140	162	178	212	225	211	237	211	250	210
Total GHG incl. LULUCF	124	137	159	175	209	221	208	233	207	246	207

Relative GHG Emissions

	1990	2000	2005	2010	2015	2020		2025		2030	
						low	high	low	high	low	high
Total excl. LULUCF											
Relative 1990	100%	121%	140%	154%	183%	194%	183%	205%	182%	216%	182%
Relative 2000	82%	100%	115%	127%	151%	160%	150%	169%	150%	178%	150%
Relative 2005	71%	87%	100%	110%	131%	138%	130%	146%	130%	154%	130%
Relative 2010	65%	79%	91%	100%	119%	126%	119%	133%	118%	140%	118%
Relative 2015	55%	66%	76%	84%	100%	106%	100%	112%	99%	118%	99%

Per-Capita Emissions

	1990	2000	2005	2010	2015	2020		2025		2030	
						low	high	low	high	low	high
Total excl. LULUCF											
Population (Mio)	26	31	33	36	40	43	43	46	46	48	48
Per-Capita Emissions (tCO2eq/cap)	4.5	4.5	4.9	4.9	5.3	5.2	4.9	5.2	4.6	5.2	4.4
Relative 1990	100%	101%	109%	111%	120%	117%	110%	116%	103%	116%	98%
Relative 2000	99%	100%	108%	110%	119%	116%	109%	115%	102%	115%	97%
Relative 2005	92%	92%	100%	101%	110%	107%	101%	106%	94%	106%	89%
Relative 2010	90%	91%	99%	100%	108%	106%	99%	105%	93%	105%	88%
Relative 2015	83%	84%	91%	92%	100%	98%	92%	97%	86%	97%	81%

Data Sources:

Cat1_CO2	PRIMAPHIST17	Cat5A1_CO2	UNFCCC CRF + Nat. Comms.
Cat2367_CO2	PRIMAPHIST17	Cat5A2_CO2	UNFCCC CRF + Nat. Comms.
Cat4_CO2	PRIMAPHIST17	Cat5LtoNonFL_CO	UNFCCC CRF + Nat. Comms.
Cat5_CO2	PRIMAPHIST17	Cat5GMCMWMM_C	UNFCCC CRF
Cat1_CH4	PRIMAPHIST17	Cat5A1ForestFires	UNFCCC Cat5 + EDGAR(IPCC Database)
Cat2367_CH4	PRIMAPHIST17	Cat5A1HWP_CO2	UNFCCC CRF + Nat. Comms.
Cat4_CH4	PRIMAPHIST17	Cat5bisA_CO2	UNFCCC CRF + NATCOMM.
Cat5_CH4	PRIMAPHIST17	Cat5bisB_CO2	UNFCCC CRF + NATCOMM.
Cat1_N2O	PRIMAPHIST17	Cat5bisC_CO2	UNFCCC CRF + NATCOMM.
Cat2367_N2O	PRIMAPHIST17	Cat5bisD_CO2	UNFCCC CRF + NATCOMM.
Cat4_N2O	PRIMAPHIST17	Cat5bisE_CO2	UNFCCC CRF + NATCOMM.
Cat5_N2O	PRIMAPHIST17	PRO_WM_Cat5_G	UNFCCC Annex I Reports
Cat0_HFCs	PRIMAPHIST17	Metric	GWP SAR
Cat0_PFCs	PRIMAPHIST17		
Cat0_SF6	PRIMAPHIST17		
Population	UN 2015 Population Projections MEDIUM		
GDP	IMF WEO 2015, PPP adjusted GDP, constant 2009 prices...		
	IPCC WG3 Scenario IMAGE AMPERE2-550-FullTech-HST		
	PRIMAPHIST16 description: www.pik-potsdam.de/primap-live/primap-hist/		
	Gratefully acknowledged in particular: PRIMAP, CAIT, CDIAC, EDGAR, IPCC, IEA, UNEP Gap Team, AMPERE Team and comments on earlier versions, in particular by Giacomo Grassi. Errors and misjudgements are our own. Malte Meinshausen & Ryan Alexander; The "Fiji COP23" Edition was enabled through support via the BMUB project UM14 41 4060		
	This Factsheet is available at www.climatecollege.unimelb.edu.au/indc-factsheets. Check out as well: www.climateactiontracker.org, www.mitigation-contributions.org, cait.wri.org, infographics.pbl.nl/indc, live.primap.org, www.unep.org/climatechange/pledgepipeline, and our twitter feed @ClimateCollege		

climatecollege.unimelb.edu.au



Various 'fair' contributions for a global 'least-cost' 2°C path (total incl. LULUCF):

More info on www.mitigation-contributions.org

2025 rel. 2010:		2030 rel. 2010:	
LEADER	#N/A	LEADER	#N/A
CDC	#N/A	CDC	#N/A
ECPC50	#N/A	ECPC50	#N/A
ECPC90	#N/A	ECPC90	#N/A
GDR	#N/A	GDR	#N/A
INDC HIGH	19%	INDC HIGH	18%
INDC LOW	34%	INDC LOW	41%

"Fair" contributions for a global 'least-cost' 2°C track:

LEADER	Leader
CDC	Common-but-diff. per-cap. convergence
ECPC50	Eq. cum. Per-capita since 1950
ECPC90	Eq. cum. Per-capita since 1990
GDR	Greenhouse Development Rights
#N/A	No available data