

Shown: 2025 & 2030: Min/max of unconditional and conditional targets

Paris Agreement ratified on: 21/09/2016

# Albania

Per-Capita Emissions in 2030 rel. 2015 (excl. LULUCF): **-1%**

NDC 2025

NDC 2030

2015 World Rank

2025 World Rank

2030 World Rank

Share of World Emissions excl. LULUCF (Rank):

0.0% #147

0.0% #150

0.0% #150

Per-Capita Emissions (tCO2eq/cap)

2.9t #124

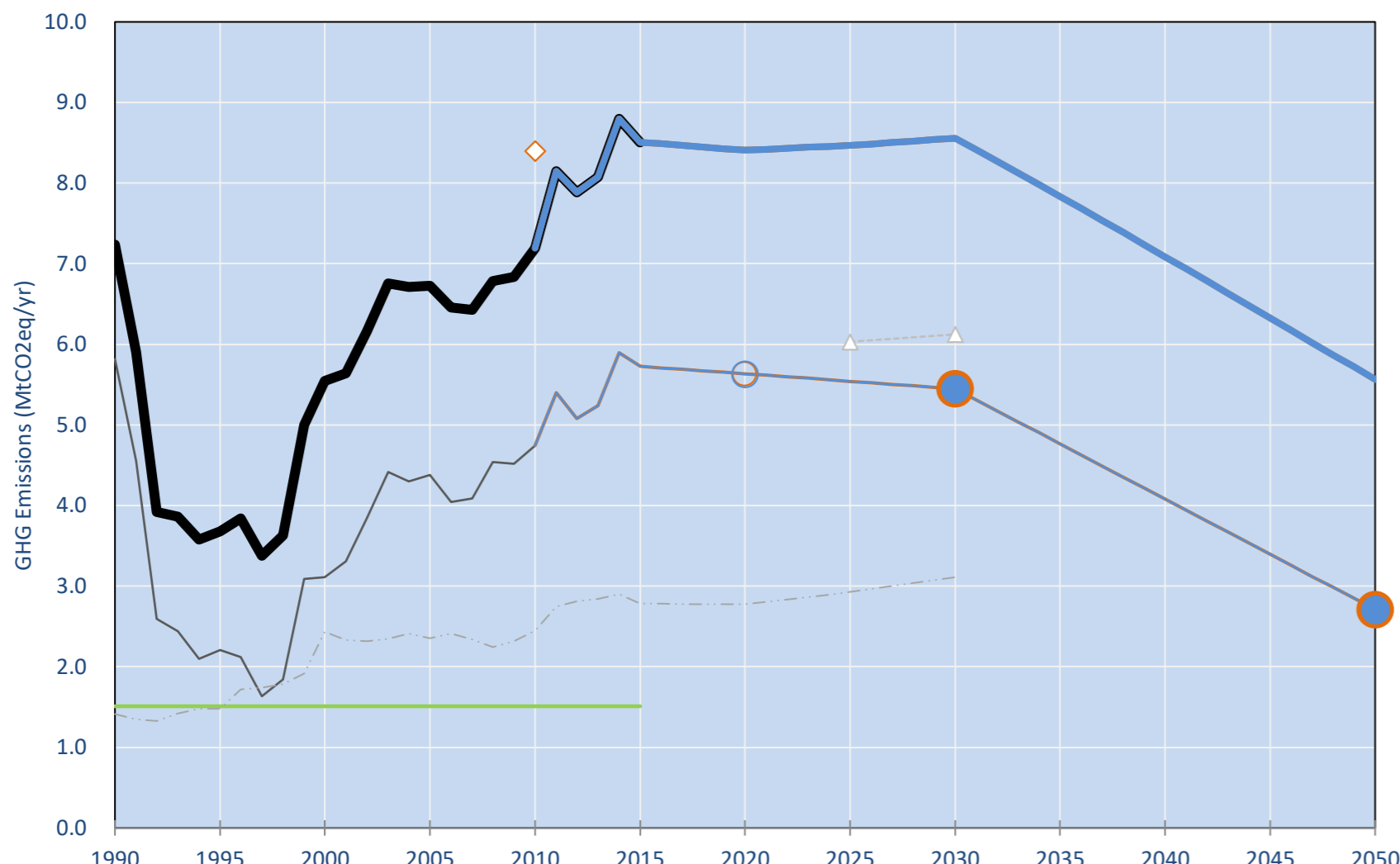
2.9t #126

2.9t #124

NDC: Committed to reduce CO2 emissions by 11.5% compared to BAU. (GWP SAR)

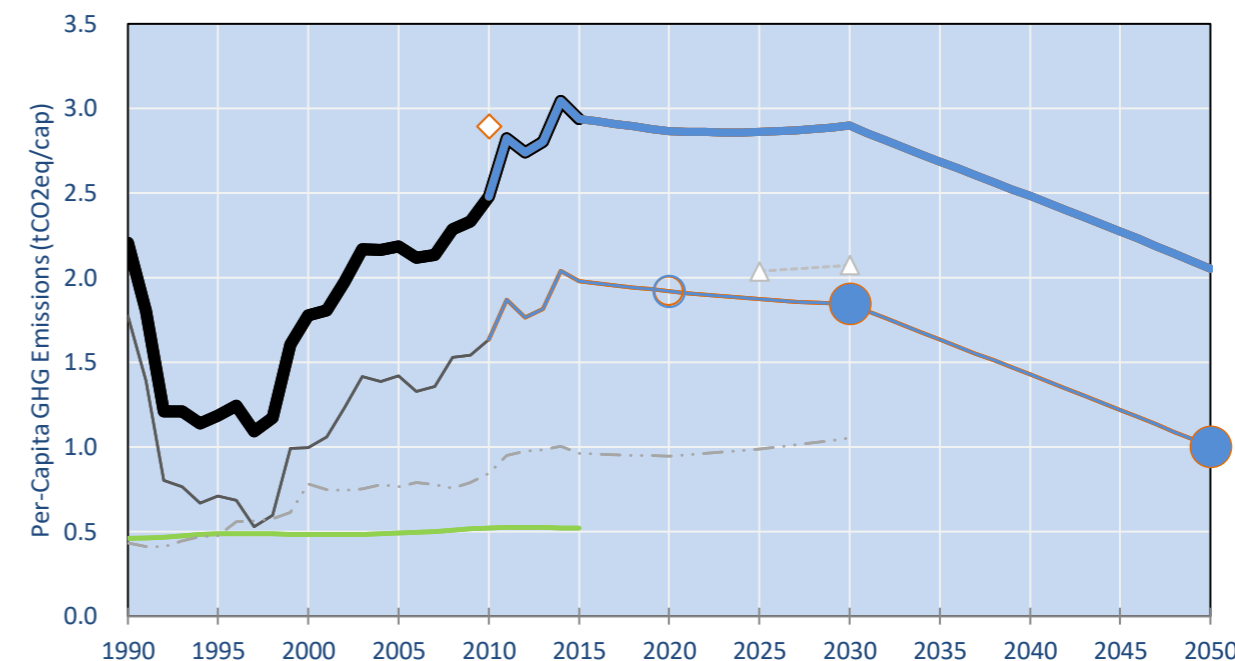
INDC Submitted: 24/09/2015

## GHG Emissions

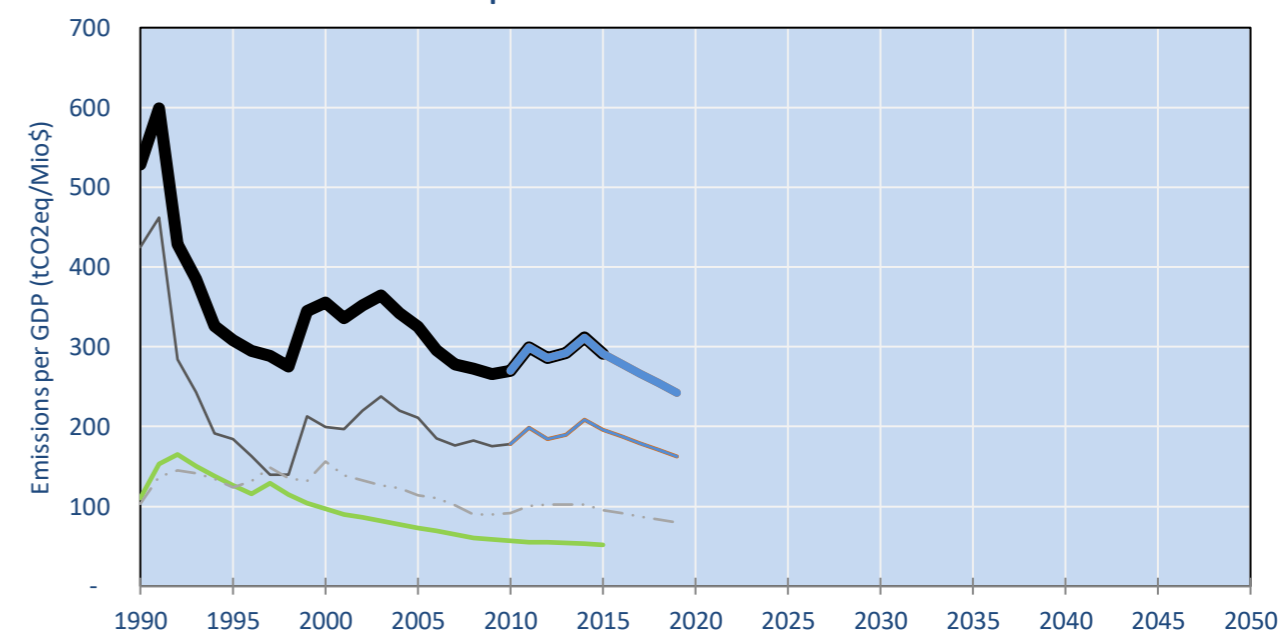


- Reference Total GHG excl. LULUCF
- Historical Covered Emissions, incl. LULUCF, if covered.
- LOW INDC Covered Emissions, incl. LULUCF if covered
- LOW INDC Covered + Non-Covered Emissions, excl. LULUCF
- HIGH INDC Covered Emissions, incl. LULUCF
- HIGH INDC Covered + Non-Covered Emissions, excl. LULUCF
- HIGH Cancun Pledges
- Reference LULUCF Emissions
- LOW INDC Levels
- LOW INDC Covered Emissions, excl. LULUCF
- HIGH INDC Levels
- HIGH INDC Covered Emissions, excl. LULUCF
- LOW Cancun Pledges
- Albania INDC 2009 GHG GWP SAR
- Regional/Gas-specific BAU
- Not-covered GHG excl. LULUCF (Region Projection)

## Per-Capita Emissions

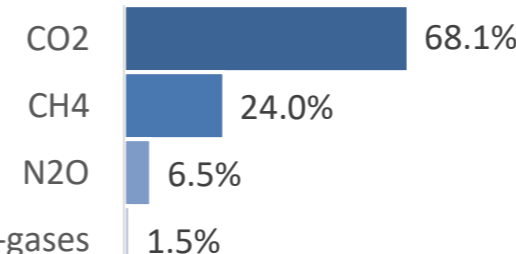


## GHG Emissions per GDP

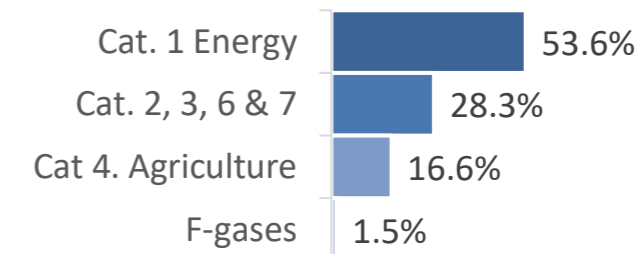


## 2015 Total GHG Emissions excl. LULUCF

By Gas:



By Sector:



## GHG Emissions

	1990	2000	2005	2010	2015	2020		2025		2030	
(MtCO2eq/yr in GWP SAR)						low	high	low	high	low	high
Assumed LULUCF Accounting Credits (-)/Debits (+)											
NDC covered LULUCF Emissions											
NDC covered Emissions excl. LULUCF	6	3	4	5	6	6	6	6	6	5	5
Total GHG excl. LULUCF	7	6	7	7	9	8	8	8	8	9	9
Total GHG incl. LULUCF	9	7	8	9	10	10	10	10	10	10	10

## Relative GHG Emissions

	1990	2000	2005	2010	2015	2020		2025		2030	
Total excl. LULUCF						low	high	low	high	low	high
Relative 1990	100%	77%	93%	99%	118%	116%	116%	117%	117%	118%	118%
Relative 2000	130%	100%	121%	130%	153%	152%	152%	153%	153%	154%	154%
Relative 2005	107%	82%	100%	107%	126%	125%	125%	126%	127%	127%	127%
Relative 2010	101%	77%	94%	100%	118%	117%	117%	118%	118%	119%	119%
Relative 2015	85%	65%	79%	85%	100%	99%	99%	100%	100%	101%	101%

## Per-Capita Emissions

	1990	2000	2005	2010	2015	2020		2025		2030	
Total excl. LULUCF						low	high	low	high	low	high
Population (Mio)	3	3	3	3	3	3	3	3	3	3	3
Per-Capita Emissions (tCO2eq/cap)	2.2	1.8	2.2	2.5	2.9	2.9	2.9	2.9	2.9	2.9	2.9
Relative 1990	100%	81%	99%	112%	133%	130%	130%	130%	130%	131%	131%
Relative 2000	124%	100%	123%	140%	165%	161%	161%	161%	161%	163%	163%
Relative 2005	101%	81%	100%	114%	135%	131%	131%	131%	131%	133%	133%
Relative 2010	89%	72%	88%	100%	118%	116%	116%	115%	115%	117%	117%
Relative 2015	75%	60%	74%	84%	100%	98%	98%	97%	97%	99%	99%

## Data Sources:

Cat1_CO2	PRIMAPHIST17	Cat5A1_CO2	UNFCCC CRF + Nat. Comms.
Cat2367_CO2	PRIMAPHIST17	Cat5A2_CO2	UNFCCC CRF + Nat. Comms.
Cat4_CO2	PRIMAPHIST17	Cat5LtoNonFL_CO2	UNFCCC CRF + Nat. Comms.
Cat5_CO2	PRIMAPHIST17	Cat5GCMCMWM_C	UNFCCC CRF
Cat1_CH4	PRIMAPHIST17	Cat5A1ForestFires	UNFCCC Cat5 + EDGAR(IPCC Database)
Cat2367_CH4	PRIMAPHIST17	Cat5A1HWP_CO2	UNFCCC CRF + Nat. Comms.
Cat4_CH4	PRIMAPHIST17	Cat5bisA_CO2	UNFCCC CRF + NATCOMM.
Cat5_CH4	PRIMAPHIST17	Cat5bisB_CO2	UNFCCC CRF + NATCOMM.
Cat1_N2O	PRIMAPHIST17	Cat5bisC_CO2	UNFCCC CRF + NATCOMM.
Cat2367_N2O	PRIMAPHIST17	Cat5bisD_CO2	UNFCCC CRF + NATCOMM.
Cat4_N2O	PRIMAPHIST17	Cat5bisE_CO2	UNFCCC CRF + NATCOMM.
Cat5_N2O	PRIMAPHIST17	PRO_WM_Cat5_G	UNFCCC Annex I Reports
Cat0_HFCs	PRIMAPHIST17	Metric	GWP SAR
Cat0_PFCs	PRIMAPHIST17		
Cat0_SF6	PRIMAPHIST17		
Population	UN 2015 Population Projections MEDIUM		
GDP	IMF WEO 2015, PPP adjusted GDP, constant 2009 prices...		
IPCC WG3 Scenario	IMAGE   AMPERE2-550-FullTech-HST		
PRIMAPHIST16 description:	www.pik-potsdam.de/primap-live/primap-hist/		
Gratefully acknowledged in particular: PRIMAP, CAIT, CDIAC, EDGAR, IPCC, IEA, UNEP GAP Team, AMPERE Team and comments on earlier versions, in particular by Giacomo Grassi. Errors and misjudgements are our own. Malte Meinshausen & Ryan Alexander; The "Fiji COP23" Edition was enabled through support via the BMUB project UM14 41 4060			
This Factsheet is available at <a href="http://www.climatecollege.unimelb.edu.au/indc-factsheets">www.climatecollege.unimelb.edu.au/indc-factsheets</a> . Check out as well: <a href="http://www.climateactiontracker.org">www.climateactiontracker.org</a> , <a href="http://www.mitigation-contributions.org">www.mitigation-contributions.org</a> , <a href="http://cait.wri.org">cait.wri.org</a> , <a href="http://infographics.pbl.nl/indc/">infographics.pbl.nl/indc/</a> , <a href="http://live.primap.org">live.primap.org</a> , <a href="http://www.unep.org/climatechange/pledgepipeline">www.unep.org/climatechange/pledgepipeline</a> , and our twitter feed @ClimateCollege			
<a href="http://climatecollege.unimelb.edu.au">climatecollege.unimelb.edu.au</a>			

Meinshausen, Alexander et al., www.climatecollege.unimelb.edu.au/indc-factsheets, The University of Melbourne



## Various 'fair' contributions for a global 'least-cost' 2°C path (total incl. LULUCF):

2025 rel. 2010:

LEADER	#N/A
CDC	#N/A
ECPC50	#N/A
ECPC90	#N/A
GDR	#N/A
INDC HIGH	<b>15%</b>
INDC LOW	<b>15%</b>

2030 rel. 2010:

LEADER	#N/A
CDC	#N/A
ECPC50	#N/A
ECPC90	#N/A
GDR	#N/A
INDC HIGH	<b>16%</b>
INDC LOW	<b>16%</b>

## More info on [www.mitigation-contributions.org](http://www.mitigation-contributions.org)

"Fair" contributions for a global 'least-cost' 2°C track:

LEADER	Leader
CDC	Common-but-diff. per-cap. convergence
ECPC50	Eq. cum. Per-capita since 1950
ECPC90	Eq. cum. Per-capita since 1990
GDR	Greenhouse Development Rights
#N/A	No available data